



INSTALLATION INSTRUCTIONS

2015-2020 Chevrolet Colorado 4wd Crew Short Bed Fender Flares
PART# FF-CHCO-SM-PKT

Installation Hardware:

Fasteners



Torx Head
Bit x1



5/16
x3/8"
Torx
Screws
x35



5/16
Flat
Washers
x35



5/16"
Nylock
Nuts
x35



#8x3/4" Pan
Head Screws
x 32



1"x1 1/2"3M
Foam
Adhesive Tab
x12

Clips



Large
Clips x12



Small
Clips
x10

Edge Trim



Edge
Trim 340"



Edge Trim Tool

Parts List

2 Front Flares 2 Rear Flares

Short Brackets x 2 - Driver Side (LF1) Passenger Side (RF1)

Long Brackets x 2 - Driver Side (LF2) Passenger Side (RF2)

Edge Trim Installation – (all 4 flares)



A. Peel two to three inches of red vinyl backing from Edge Trim. Apply the adhesive side of the edge trim to the inner side of the flare, affix the edge trim to the top edge of the flare (the portion that comes in contact with the vehicle).

B. First, press edge trim into place on the top edge of the flare in twelve- inch sections, then peel the red vinyl backing off as you work around the top of the flare.

Pocket Hardware Installation –(all 4 flares)



Put each Bolt/Washer combination through a pocket hole in the flare, Bolt head and Washer to the outside.

Place the 5/16" Nuts over the end of each Bolt and tighten, using a 1/2" wrench for the Nut and the supplied Torx Bit for the Bolt.

Put each Bolt/Washer combination through a pocket hole in the flare, Bolt head and Washer on the outside.

Repeat for all pockets.

Factory Flare Removal

If factory flares are installed, use the T-15 Torx bit to remove the six fasteners from each wheel well. Save these for the bracket installation.

Use the T-15 Torx bit to also remove the two fasteners securing each mudguard.

Front Flare Installation (Passenger Side):

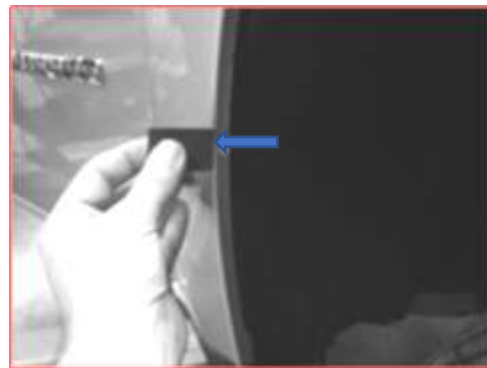
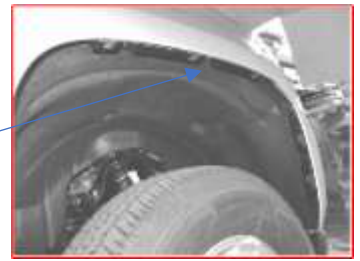


Install three small clips onto the upper mounting bracket and two clips onto the front mounting bracket. Repeat same step for driver side brackets.



Install the short mounting bracket (RF1) into front of wheel well, using three factory fasteners and a T-15 Torx bit.

Install the long mounting bracket (RF2) into top of the wheel well, using three factory fasteners and a T-15

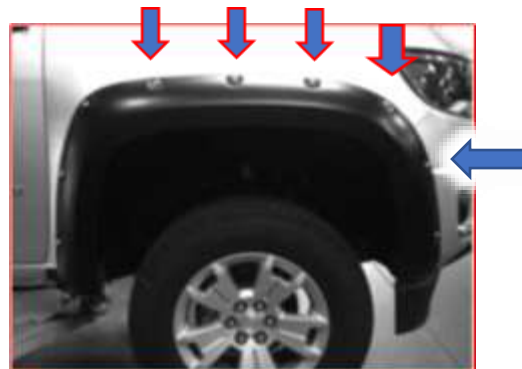


To mark the clip locations, use the flare as a template and hold it in position, use a grease pencil or sharpie to mark sheet metal using hole location as a guide.

Wrap the 3M Adhesive Tabs around the flange over the marked locations.



Once the tabs have been applied, install one small clip over each tab.



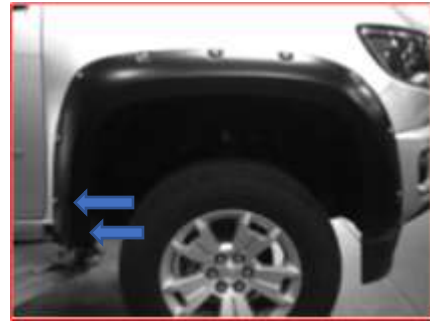
Hold flare in place and start the five Pan Head Screws into the top three and front two holes. Do not fully tighten.



INSTALLATION INSTRUCTIONS

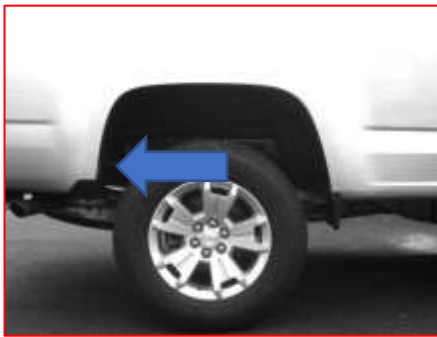


Using an awl, align clip with mounting hole and start one Pan Head screw. Do not tighten.

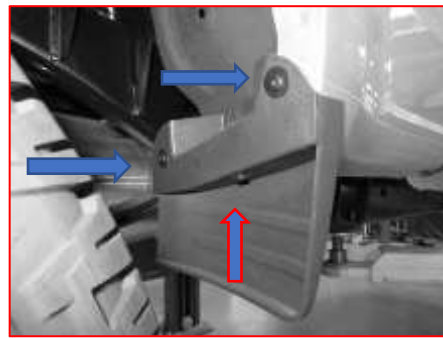


Start two supplied screws into the two bottom rear mounting locations. Fully tighten all screws.

Rear Flare Installation (Passenger Side)



Using a T-15 torx bit, remove two factory fasteners from the mud guard in the lower rear of the wheel well. Discard factory fasteners only.



Using a T-15 Torx bit, remove three factory fasteners from the deflector located at the lower front of the wheel well.



Once the factory fasteners have been removed, reach in behind deflector to find white factory retainer. Using pliers, pinch retainer and push towards wheel center, releasing deflector. Discard factory fasteners and deflector.



Holding flare in position, use a grease pencil or sharpie to mark the five upper mounting hole locations using the mounting holes in the flare as a guide. Remove flare.



INSTALLATION INSTRUCTIONS

Rear Flare Installation (Passenger Side)(cont'd)



Wrap five supplied tabs around inner lip of sheet metal over the marked locations.



Place one small clip over each tab



Holding flare in position, start five supplied screws (SW1-0056) into one forward and two rearward mounting holes.



Fully tighten all screws, starting through the top center hole working outward. Use awl to align clip with mounting holes.

Using the Edge Trim Tool



Seat edge trim against vehicle by hooking curved end under edge trim at one end of flare. Next, slide around outer edge of flare to the other end.



Using flat end of Edge Trim Tool, seat edge trim against flare by inserting straight end between edge trim and flare at one end. Next, slide around entire edge to the other end.

PRIOR TO INSTALLATION

Hardware

Use only the hardware provided and materials provided, replacing them with untested parts, materials or adhesives will void your warranty.

Fit:

Check fit the flares to vehicle prior to installation. (Some minor sanding be necessary to ensure a snug fit).

Painting:

Explain in detail to your paint supplier your needs, you need an automotive grade primer and top-coats to cover ABS plastic , if you are contemplating painting the trim strips we would recommend that this be undertaken by a professional.

Exhaust System:

Exhaust gases should not vent directly onto flares

Corrosion Protection: Spray inner fender wells with undercoating after installation.

Decals

Make sure that the flares do not interfere with existing decals on vehicle

Care & Cleaning:

Any detergent you use to wash your vehicle is sufficient to clean your flares.



1-866-926-2867 Mon-Fri 9AM-6PM EST

57 Denton Avenue, New Hyde Park, Long Island, NY 11040 Headquarters

info@blackhorseoffroad.com