



Running Board

Part No. R0004MK/R0007RB



Fits: 2005 - 2010

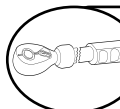
Toyota Sienna



REMOVE CONTENTS FROM BOX. VERIFY ALL PARTS ARE PRESENT.



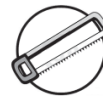
READ INSTRUCTIONS CAREFULLY BEFORE STARTING INSTALLATION.



DO NOT OVER TORQUE. STANDARD OPERATING LOAD FOR TIGHTEN BODY MOUNT NUTS & BOLTS VARIES FROM 45 TO 65 FOOT POUND.



60-180 min

Cutting
RequiredDrilling Not
Required

support@trailfx.com

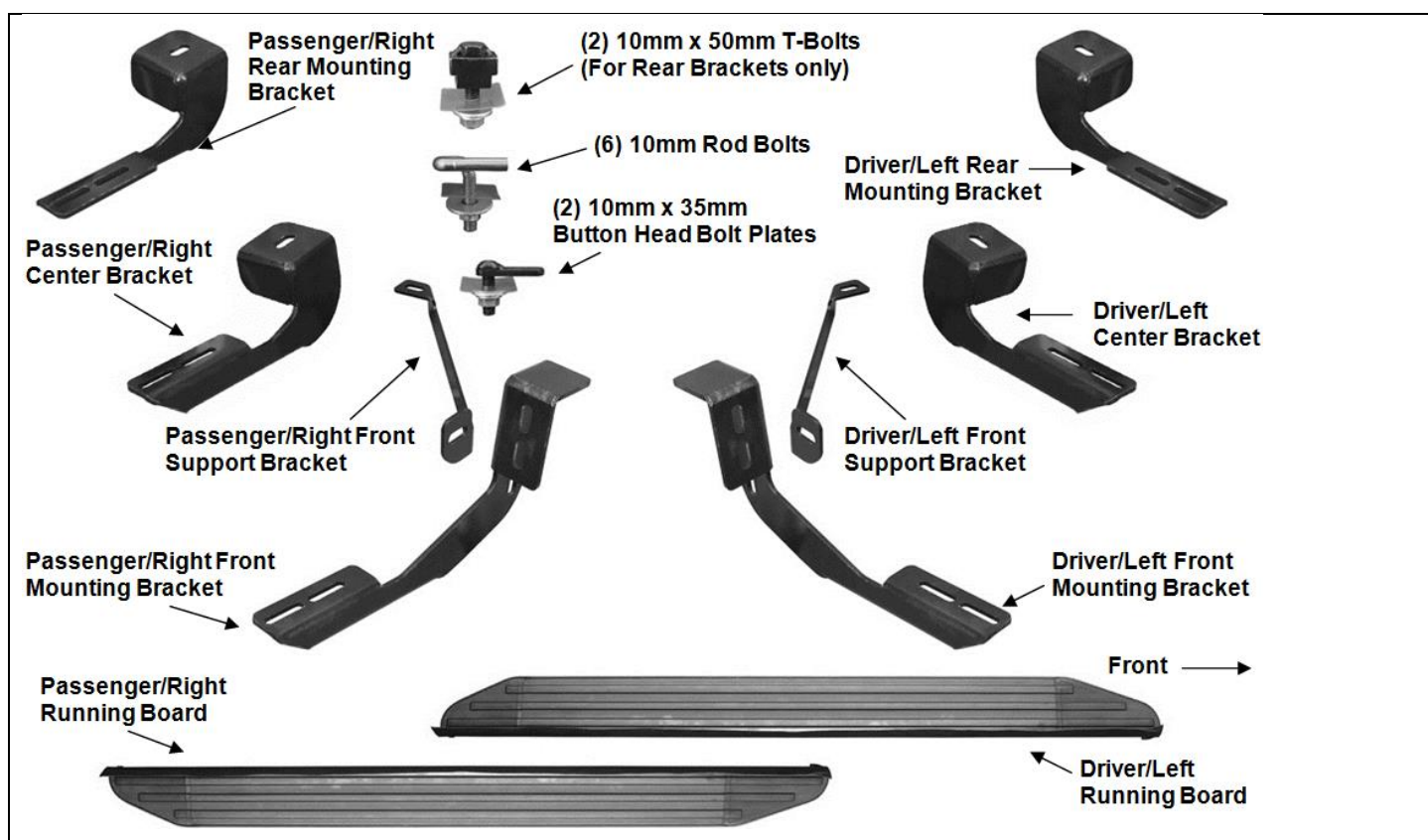


1 866 638 4870

POLISHED STAINLESS STEEL – LIMITED LIFETIME
POWDER COATED BLACK – 3 YEARS

PARTS LIST:

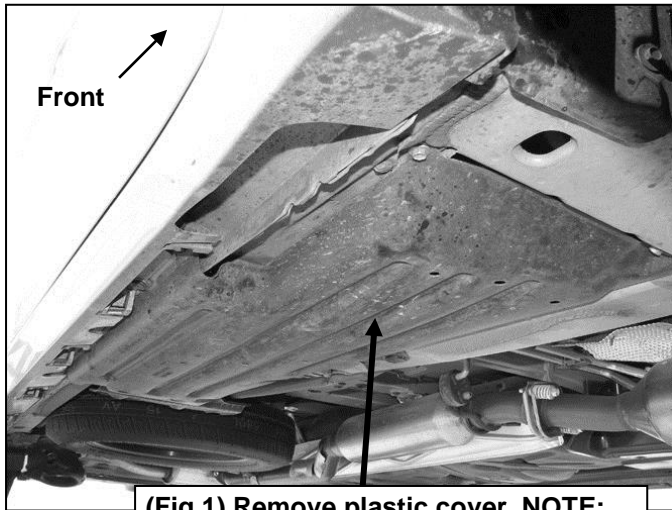
Qty	Part Description	Qty	Part Description
1	Driver/Left side Running Board	2	10mm x 50mm "T" Bolts
1	Passenger/Right side Running Board	6	10mm Bent Threaded Rod Bolts
1	Driver/Left front Mounting Bracket	8	10mm Plastic Retainers
1	Passenger/Right front Mounting Bracket	2	10-1.5mm x 25mm Hex Bolts
1	Driver/Left front Support Bracket	10	10mm x 27mm x 3mm STD Flat Washers
1	Passenger/right front Support Bracket	4	10mm x 34mm x 3mm Large Flat Washers
1	Driver/left center Mounting Bracket	12	10mm Serrated Flanged Nuts
1	Passenger/right center Mounting Bracket	12	6mm T-Bolts
1	Driver/Left rear Mounting Bracket	12	6mm x 22mm OD x 2mm Flat Washers
1	Passenger/right rear Mounting Bracket	12	6mm Lock Washers
2	10mm x 35mm button head Bolt Plates	12	6mm Hex Nuts



Install Note: Cutting is required. Assistance is recommended. 200lbs is the maximum rated load for the viewpoint running boards.

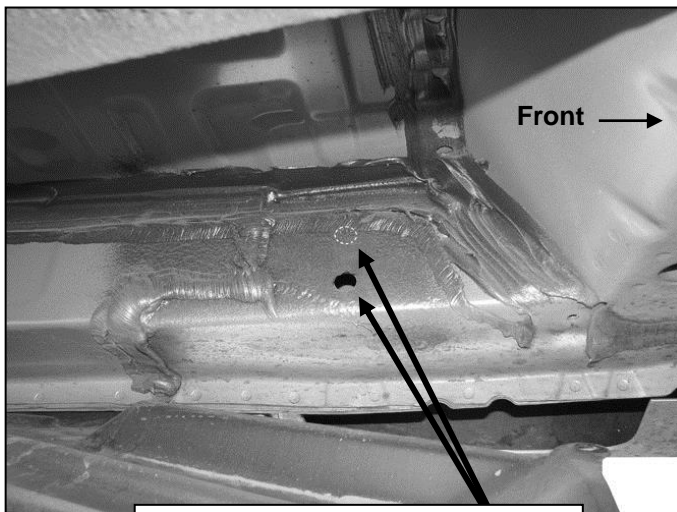
INSTALLATION PROCEDURE

1. Start installation under the driver side front of the vehicle. Remove the plastic cover, **(Fig. 1)**. Pay close attention to the type and location of all factory hardware for reinstallation.



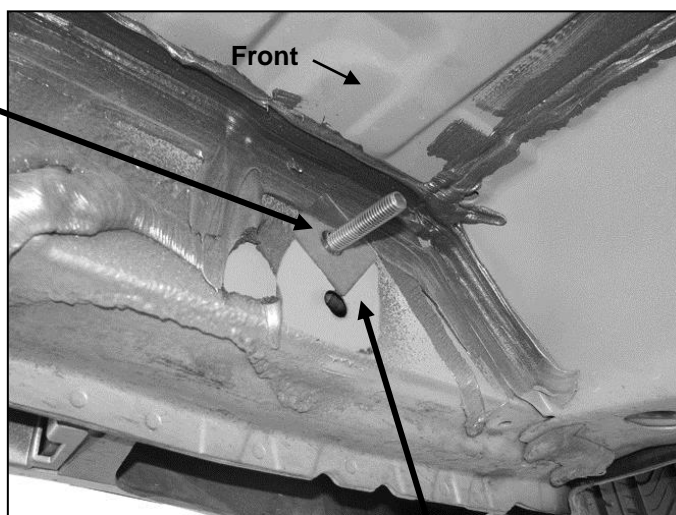
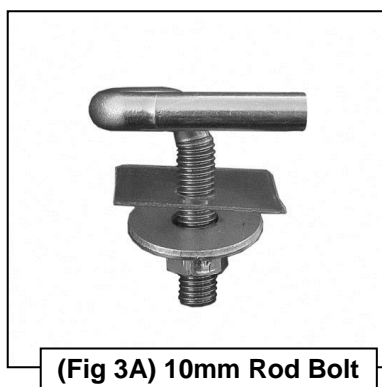
(Fig 1) Remove plastic cover. NOTE: Passenger side pictured

2. Locate the (2) factory holes in the inside wall of the floor panel, **(Fig. 2)**. **NOTE:** The mounting locations may be covered by sealant or undercoating. Use a small screwdriver to poke through the sealant to uncover the hole. **IMPORTANT:** Brackets must sit flat against sheet metal. Scrape any excess sealant from body panel before installing any and all Brackets.



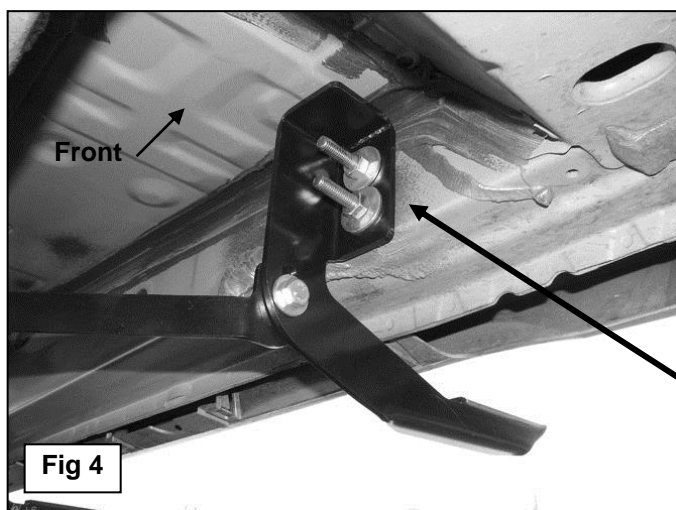
(Fig 2) Driver side front mounting location pictured-remove sealant

3. Select (1) 10mm Rod Bolt and (1) 10mm Plastic Retainer, **(Fig. 3A)**. Partially thread the Retainer onto the Rod Bolt. Insert the Rod Bolt into the factory hole in the side panel, **(Fig. 3B)**. Thread the Retainer down until it is tight against the floor panel. The Retainer is designed to help hold the Rod Bolt in place during Bracket installation. Repeat this Step to install the second Rod Bolt in the remaining hole.



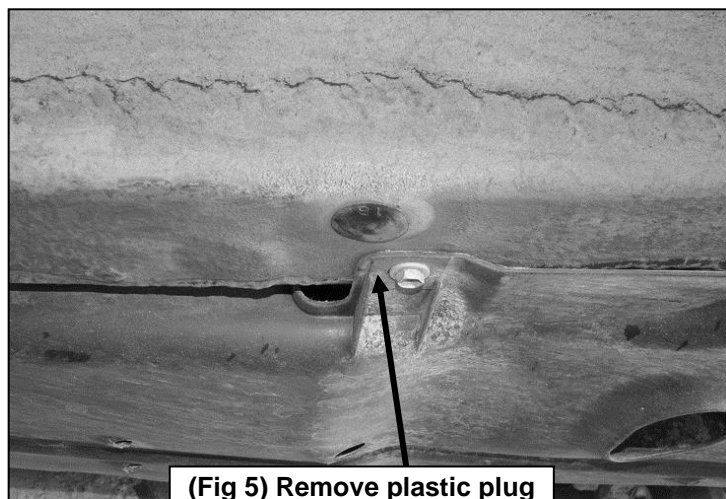
(Fig 3B) Use Plastic Retainer to hold Rod Bolt in place during Bracket installation

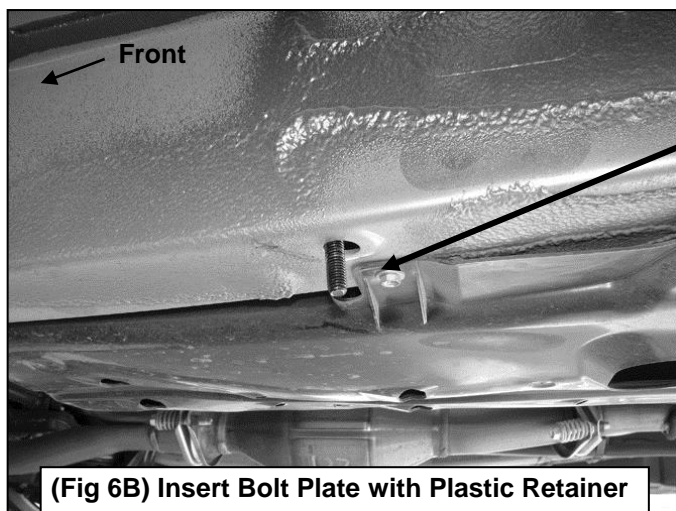
4. Hang the driver side Front Bracket from the (2) Rod Bolts with (2) 10mm x 34mm Large Flat Washers and (2) 10mm Flange Nuts, **(Fig. 4)**. Snug but do not tighten hardware at this time.



(2) 10mm Rod Bolts
(2) 10mm Plastic Retainers
(2) 10mm Large Flat Washers
(2) 10mm Flange Nuts

5. Next, remove the plastic plug from the bottom of the frame channel, **(Fig. 5)**. Select (1) 10mm button head Bolt Plate and (1) Plastic Retainer, **(Fig. 6A)**. Partially thread the Retainer onto the Bolt Plate. Insert the Bolt Plate into the hole in the bottom of the frame channel, **(Fig. 6B)**. Thread the Retainer down tight against the sheet metal to hold the Bolt Plate in place.





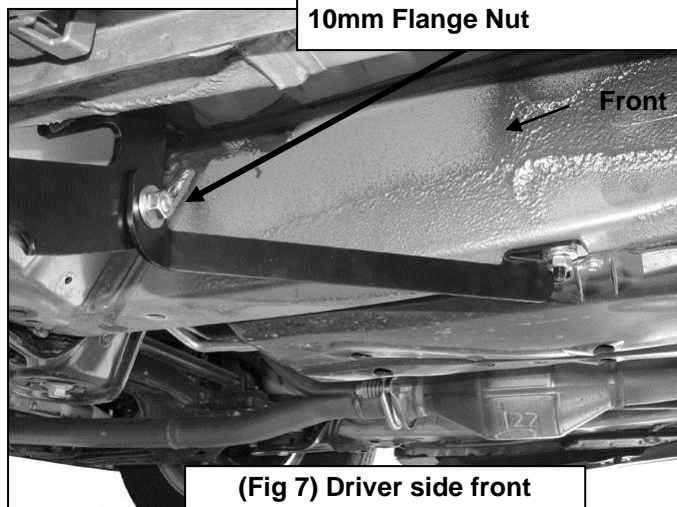
(Fig 6B) Insert Bolt Plate with Plastic Retainer into hole in bottom of frame channel



(Fig 6A) 10mm x 35mm Bolt Plate

6. Select the driver side front Support Bracket. Secure the Bracket to the back of the front Mounting Bracket with (1) 10mm x 25mm Hex Bolt, (2) 10mm x 27mm STD Flat Washers and (1) 10mm Flange Nut, (Fig. 7). Leave hardware loose at this time. Bolt the inner end of the Support Bracket to the Bolt Plate with (1) 10mm x 27mm STD Flat Washer and (1) 10mm Flange Nut, (Fig. 8). Snug but do not fully tighten hardware at this time.

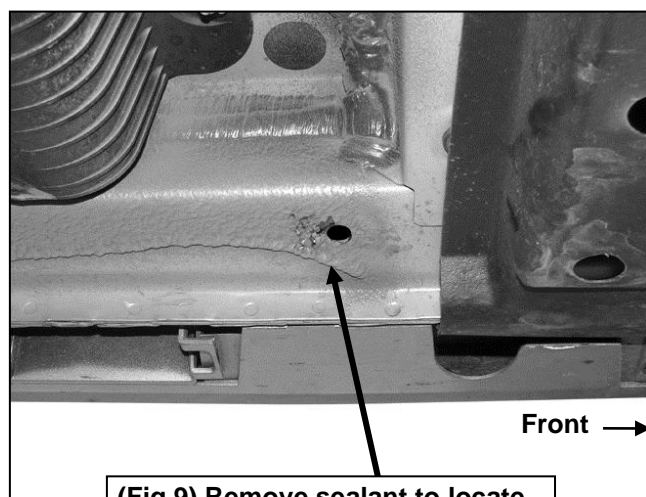
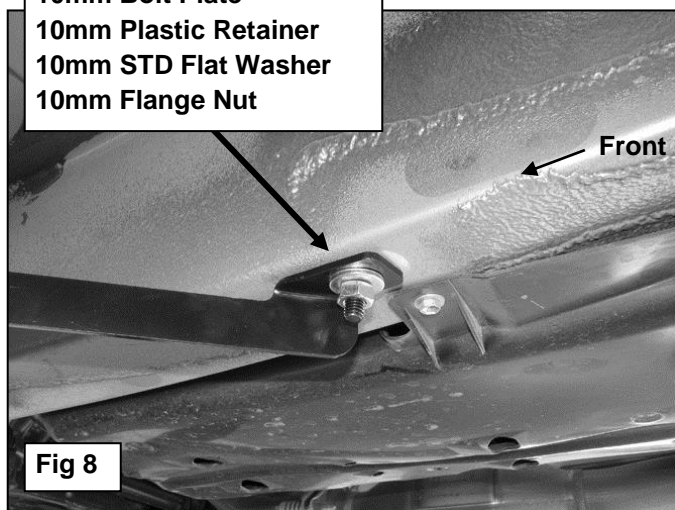
10mm x 25mm Hex Bolt
(2) 10mm STD Flat Washers
10mm Flange Nut



(Fig 7) Driver side front Support Bracket pictured

7. Move toward the center of the vehicle. Locate the factory hole in the bottom of the outer frame channel, (Fig. 9). **NOTE:** Hole may be covered with sealant as described in **Step 3**. Select (1) 10mm Rod Bolt and (1) 10mm Plastic Retainer, (Fig. 10A). Insert Rod Bolt into factory hole and tighten Retainer, (Fig. 10B). Select the driver side Center Bracket, (Fig. 11A). **IMPORTANT: the Center and Rear Brackets are similar, use Figure 11A to properly identify the Center and Rear Brackets.** Secure the Center Bracket to the Rod Bolt with (1) 10mm x 27mm STD Flat Washer and (1) 10mm Flange Nut, (Fig. 11B). Snug but do not fully tighten hardware at this time.

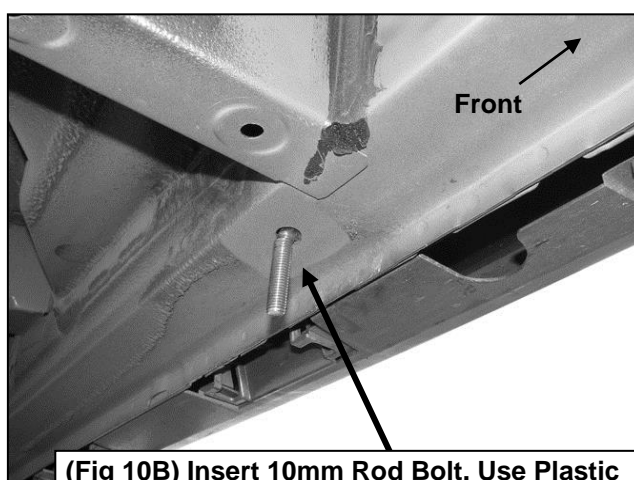
10mm Bolt Plate
10mm Plastic Retainer
10mm STD Flat Washer
10mm Flange Nut



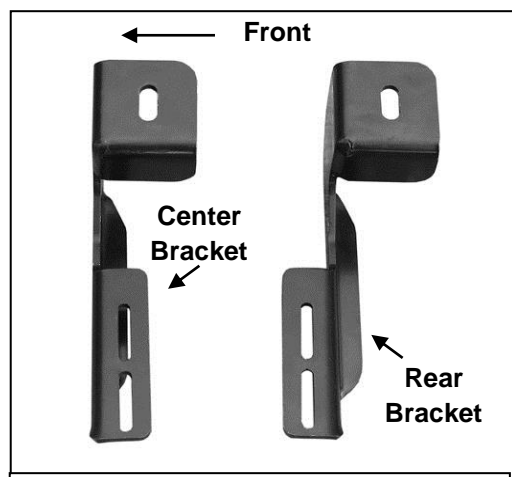
(Fig 9) Remove sealant to locate factory hole for center Bracket



Front

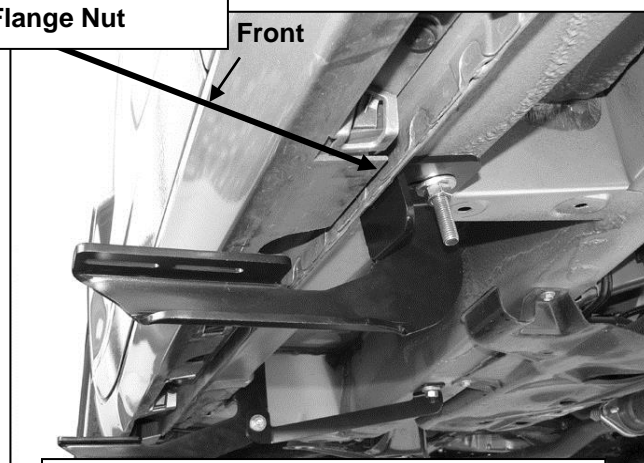


(Fig 10B) Insert 10mm Rod Bolt. Use Plastic Retainer to hold Rod Bolt in position



(Fig 11A) **IMPORTANT:** Driver side Center Bracket (cradle to rear) and Rear Bracket (cradle to front)

10mm Rod Bolt
10mm Plastic Retainer
10mm STD Flat Washer
10mm Flange Nut

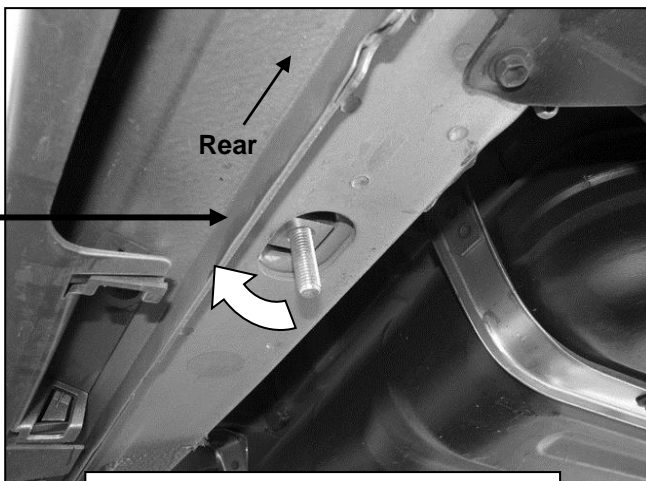


(Fig 11B) Driver side Center Bracket

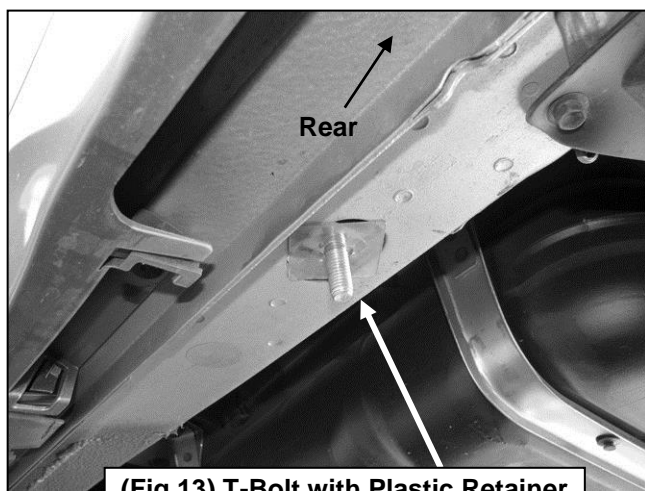
8. Move to the rear mounting location and locate the large oval hole in the floor panel. Select (1) 10mm T-Bolt and (1) 10mm Plastic Retainer, **(Fig. 12A)**. Partially thread the Retainer onto the T-Bolt. Insert the T-Bolt into the oval hole in the floor panel and rotate Bolt 90-degrees so that the Block is across the oval hole, **(Fig. 12B)**. Thread the Retainer down until it is tight against the floor panel, **(Fig. 13)**. Select the driver side Rear Mounting Bracket, **(Fig. 11A)**. Secure the Bracket to the T-Bolt with (1) 10mm x 27mm STD Flat Washer and (1) 10mm Flange Nut, **(Fig. 14)**. Snug but do not fully tighten hardware at this time.



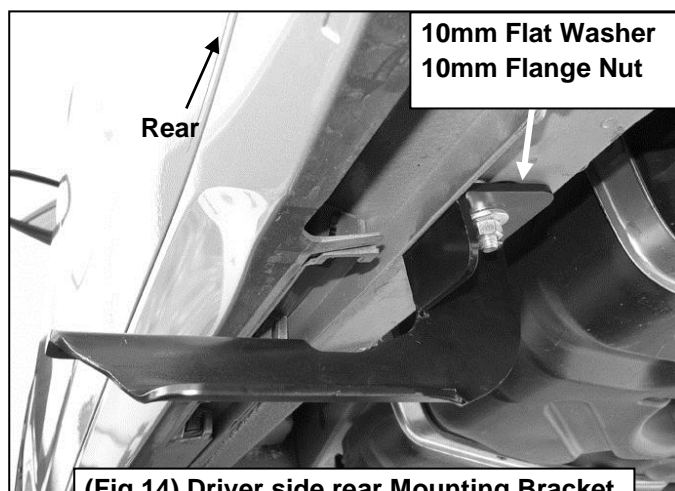
(Fig 12A) 10mm T-Bolt



(Fig 12B) Insert T-Bolt then rotate 90-degrees to go across oval hole

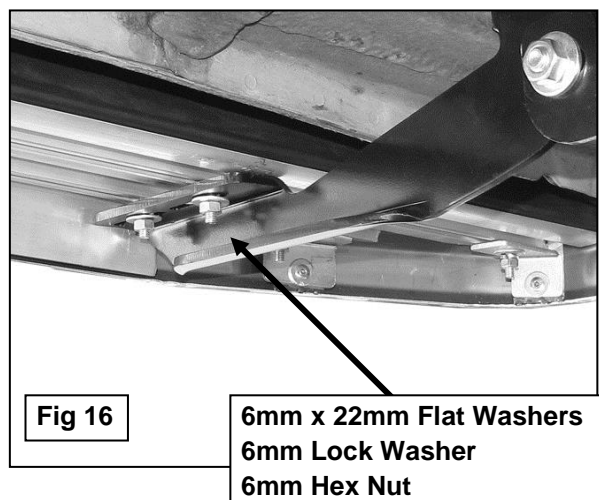
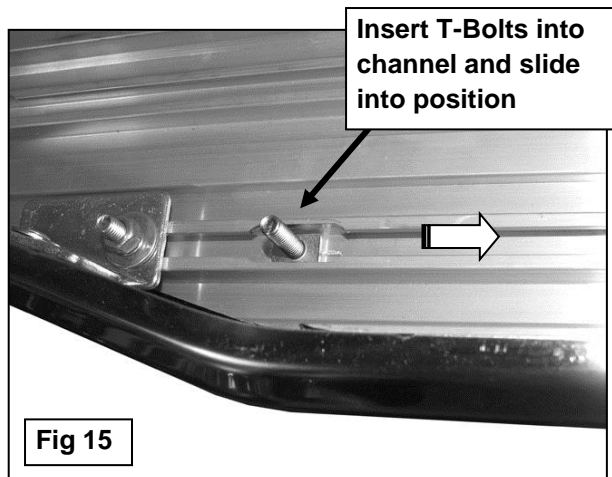


(Fig 13) T-Bolt with Plastic Retainer

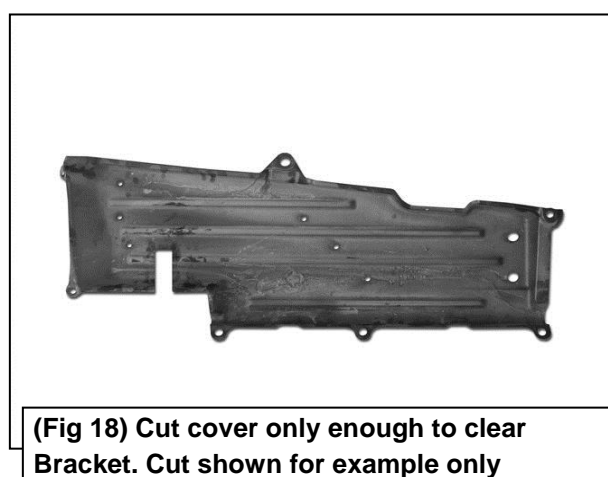
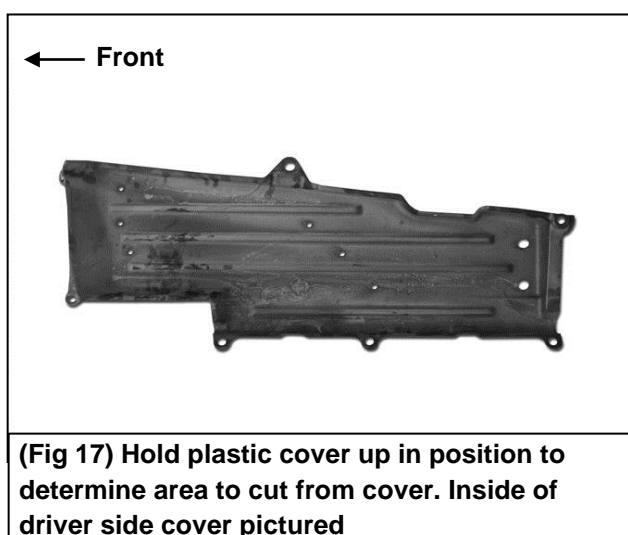


(Fig 14) Driver side rear Mounting Bracket

9. Carefully unwrap the Running Boards and select the driver side. Insert (6) 6mm T-Bolts into the slots in the end of the channels, (3 T-Bolts per channel), on the bottom of the Running Board, **(Fig. 15)**. Hold the Running Board up in approximate position and slide the T-Bolts down to line up with the Mounting Brackets. Tilt the Board up at a slight angle and push back against the vehicle until the T-Bolts fit into the slots on the Brackets. Secure the Board to the Brackets with (6) 6mm Flat Washers, (6) 6mm Lock Washers and (6) 6mm Hex Nuts, **(Fig. 16)**. Do not tighten hardware at this time. **NOTE:** the Running Board is designed to fit close to the vehicle. It may be necessary to temporarily loosen the Bracket hardware and tilt the Brackets downward to insert the Running Board.



10. Level and adjust the Running Board as desired and tighten all hardware **except** the hardware securing the front Support Bracket. Once all other hardware has been tightened, remove the front Support Bracket. Hold the plastic cover removed in **Step 5**, up in position. Trace the location of the front Bracket onto the cover, (**Fig. 17**). Carefully cut the plastic cover to clear the Bracket, (**Fig. 18**). **IMPORTANT:** Cut as little as possible from the cover. Reinstall the plastic cover with factory hardware. Reinstall the Support Bracket over the plastic cover as described in **Step 5**. Tighten all hardware.



11. Repeat **Steps 1 – 10** for passenger side Running Board installation.

PRODUCT CARE

- Periodically check the product to ensure all fasteners are tight and components are intact.
- Regular waxing is recommended to protect the finish of the product.
- **Use ONLY Non-Abrasive automotive wax.** Use of any soap, polish or wax that contains an abrasive is detrimental and can scratch the finish leading to corrosion.
- Aluminum polish may be used to polish small scratches and scuffs for **Stainless Steel finish.**
- Mild soap may be used to clean the product for both **Stainless Steel and Black finish.**

FAQ's**1. Hardware's are not of correct size.**

In GMC / Chevrolet truck model 2006 & up, customer needs to reuse the factory body bolts to install the bracket. If your vehicle is not GMC / Chevrolet 2006 & up, ensure that holes are not partially covered with any plastic grommet or rust? If it is, remove the plastic grommet & rust from the thread holes & re-try the installation.

2. Mounting Bracket are not getting Installed properly.

In some cases Illustration images shown in Installation manual may not be the exactly same as per actual vehicle images ,also if Driver / Passenger side mounting brackets are very identical in the design, suggest referring Parts Identification guide to avoid fitment issue.

3. Products are thumping / rattling after installation.

Ensure that all required mounting brackets / hardware's are installed & tighten correctly. Suggest using white lithium / regular grease between the metal to metal contact surfaces.

4. Side Bar is not aligning with vehicle / Step Pads are not aligning with vehicle doors.

Side bar may be interchanged or mounting brackets are not installed at the correct position in the vehicle. Refer Parts identification guide.

5. Missing / Excess Hardware.

Recheck hardware count as per the part list.

6. Product not installing properly.

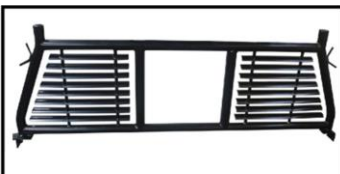
Ensure make model year, cab length and bed size of your vehicle is listed in the application. All installation steps are followed correctly.

Check out these other TrailFX Products!!

www.TrailFX.com



SIDE BAR



HEADACHE RACKS



HD GRILLE GUARDS



ROCKER GUARDS

Keystone Automotive Operations Inc. (KAO) warrants this product to be free of defects in material and workmanship at the time of purchase by the original retail consumer. KAO disclaims any other warranties, express or implied, including the warranty of fitness for a particular purpose or an intended use. If the product is found to be defective, KAO may replace or repair the product at our option, when the product is returned prepaid, with proof of purchase. Alteration to, improper installation, or misuse of this product voids the warranty. KAO's liability is limited to repair or replacement of products found to be defective, and specifically excludes liability for any incidental or consequential loss or damage.