



INSTALLATION INSTRUCTIONS

BLACK MODULAR GRILL GUARD FOR DODGE RAM 2500/3500

2009-2018(Excl. Rebel Trim)

PART # 17DR01MA

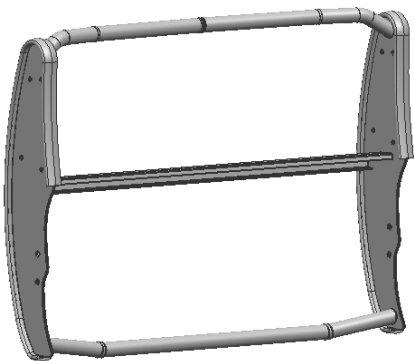
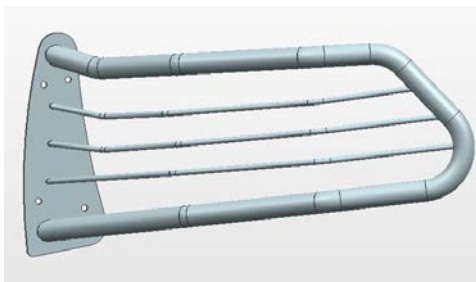
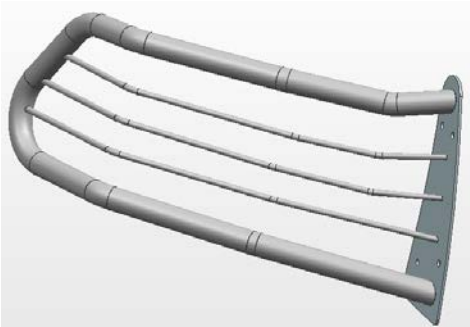
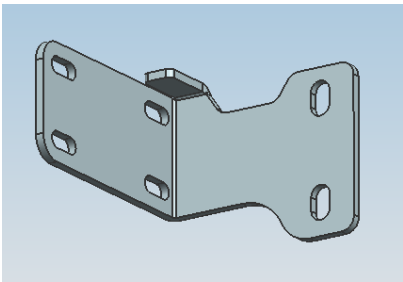
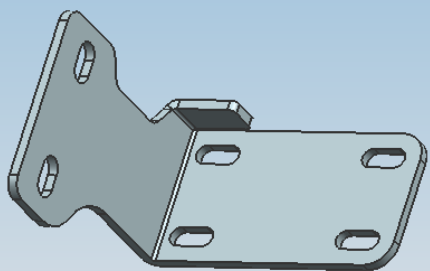
Before Installation

- Please read the instruction completely for easy installation, which will also help you to avoid scratches or other potential damages to your appealing car.
- The figures here are for reference only and may have differences with the actual product you received, however they share the same assembly way.

Care and Cleaning

- Mild soap may be used also to clean the Product.
- Please periodically check and retighten all the hardware and clean the investment for a refresh look.

Parts list

| NO. | QTY | PIC | NO. | QTY | PIC |
|-----|-----|--|-----|-----|---|
| ① | 1 |  Grille guard | ② | 1 |  Left brush guard |
| ③ | 1 |  Right brush guard | ④ | 1 |  Bracket L |
| ⑤ | 1 |  | | | |

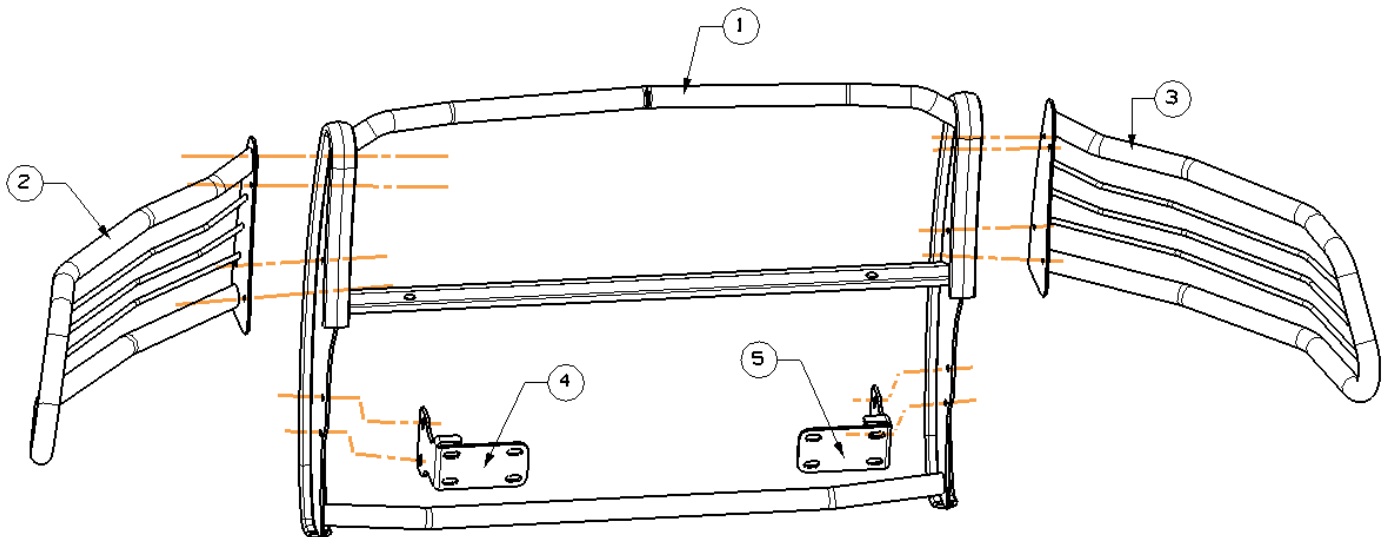
BLACK MODULAR GRILL GUARD FOR DODGE RAM 2500/3500 2009-2018(Excl. Rebel Trim)

| | | | | | |
|--|--|-----------|--|--|--|
| | | Bracket R | | | |
|--|--|-----------|--|--|--|

Installation Steps

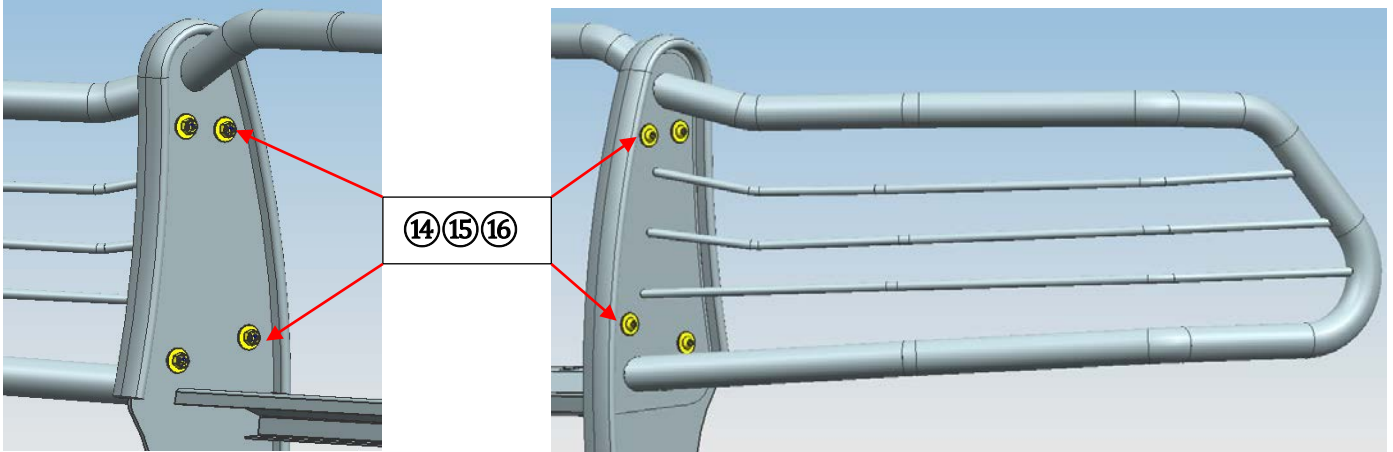
| No. | Description | QTY | No. | Description | QTY |
|-----|--------------------------|-----|-----|------------------------------|-----|
| ⑦ | Hex bolt M12_35 | 4 | ⑧ | Flat washer D12(12x24x2.5mm) | 8 |
| ⑨ | Hex lock nut M12 | 4 | ⑩ | Hex bolt M10_45 | 8 |
| ⑪ | Spring washer D10 | 8 | ⑫ | Flat washer D10(10x30x2.5mm) | 16 |
| ⑬ | Type 1 hex nut M10 | 8 | ⑭ | Button head hex bolt M8_25 | 8 |
| ⑮ | Flat washer D8(8x24x2mm) | 16 | ⑯ | Hex lock nut M8 | 8 |
| ⑰ | Allen Wrench S=5 | 1 | | | |

INSTALLING PICTURE:

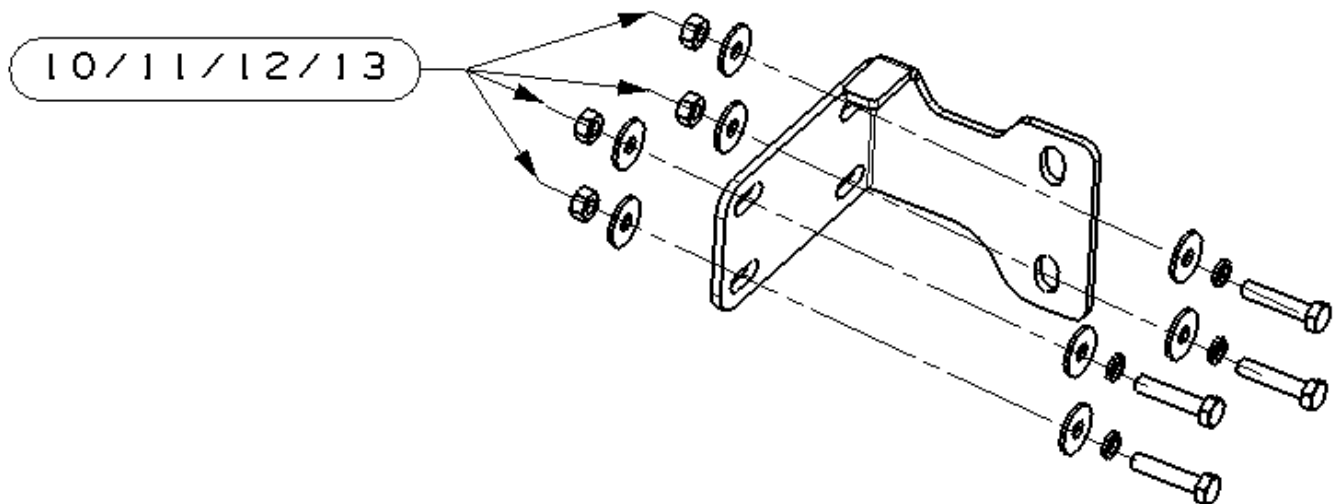
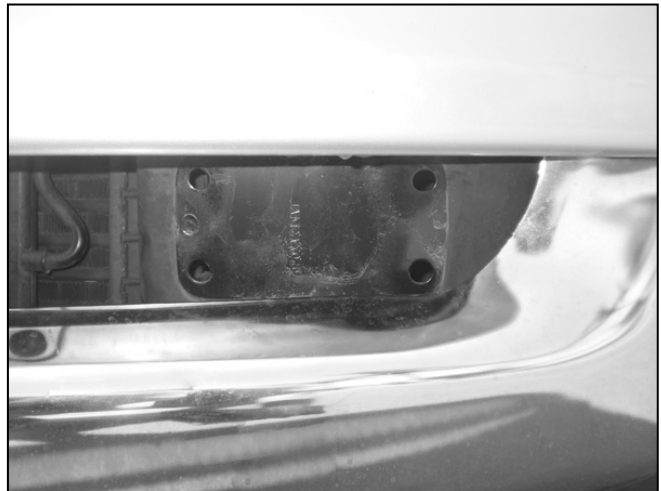


PROCEDURE:

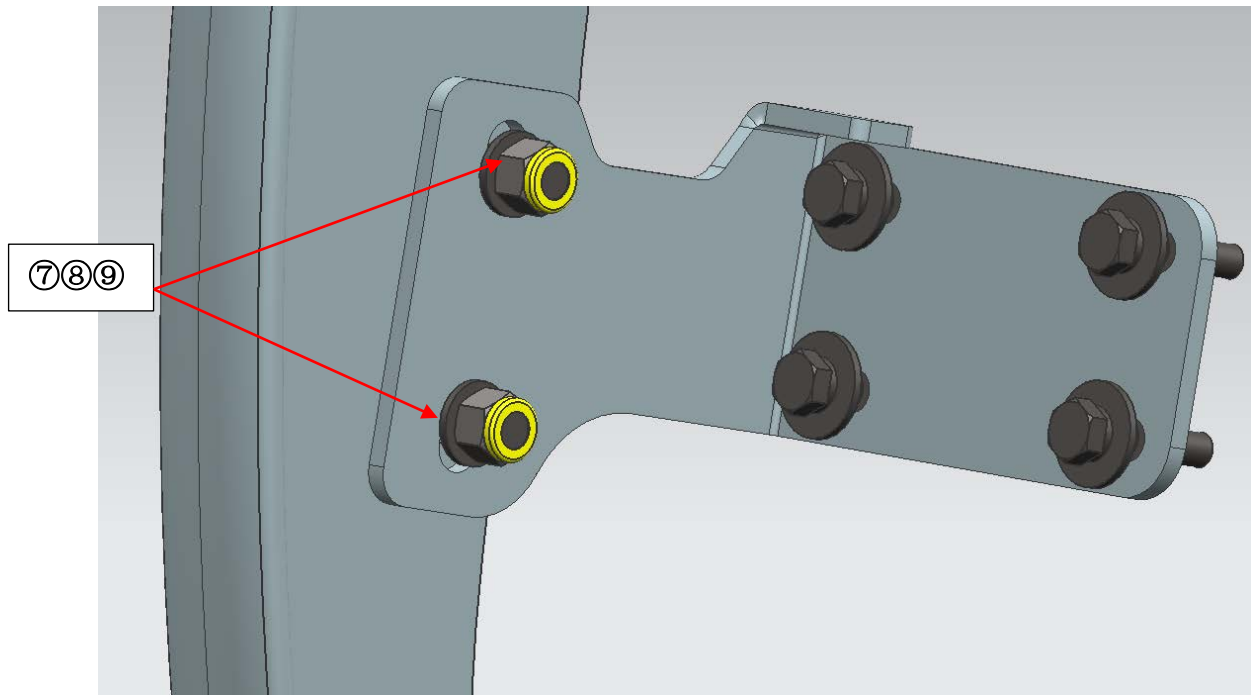
Step 1: Use standard parts ⑭⑮⑯ to connect left and right brush guards with grille guard.



Step 2: Remove tow hook. Use standard parts ⑩⑪⑫⑬ to install bracket L/R on the original mounting points of tow hook.



Step3: Use standard parts ⑦⑧⑨ to install step 1 grille guard on step 2 brackets. Adjust the grille guard, and then tighten all hardware.



Step4: Installation is finished, pick up all tools.

NOTE

Any damages and losses caused by improper installation and application, goes beyond our quality warranty.