



TEL: 1-866-XANATOS

INSTALLATION INSTRUCTIONS

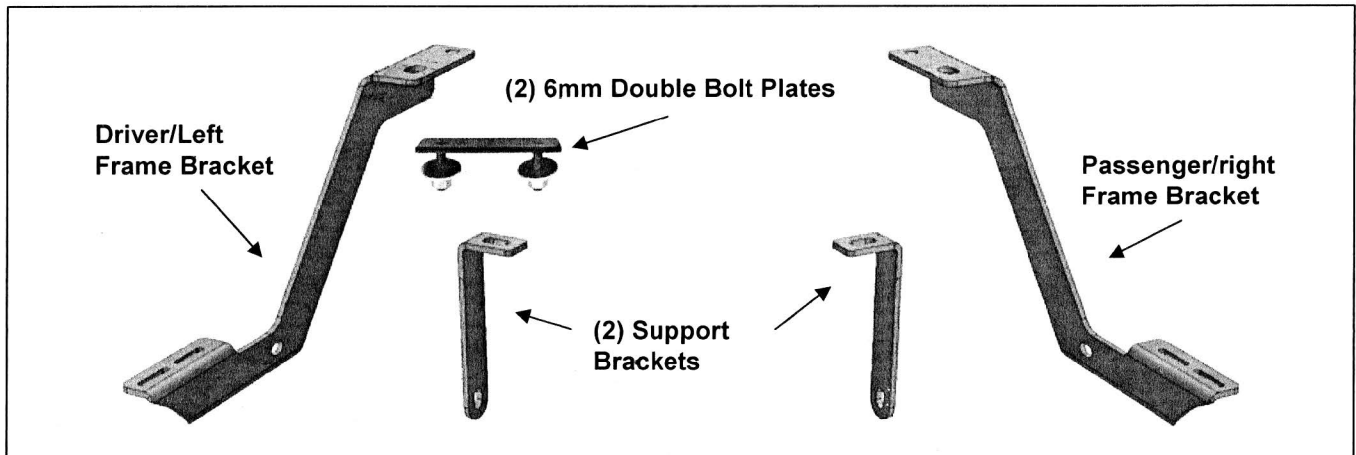
PART#: 8NINVA

REAR STEP BOARD

2012-15 NISSAN NV 1500/2500/3500 VAN (FULL SIZE)

PARTS LIST:

1	53 " Steel Running Board	4	10-1.5mm x 30mm Hex Bolts
1	Driver/left Frame Mounting Bracket	8	10mm x 27mm OD x 3mm Flat Washers
1	Passenger/right Frame Mounting Bracket	4	10mm Lock Washers
2	Support Brackets	4	10mm Hex Nuts
4	12-1.25mm x 45mm Fine Thread Hex Bolts	2	6mm Double Bolt Plates
4	12mm x 32mm OD x 3mm Flat Washers	4	6mm x 22mm OD x 2mm Flat Washers
4	12mm Lock Washers	4	6mm Lock Washers
		4	6mm Hex Nuts



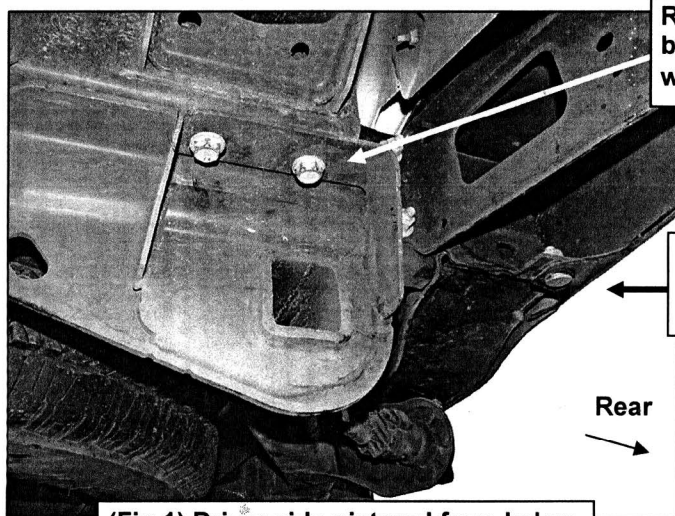
PROCEDURE:

REMOVE CONTENTS FROM BOX. VERIFY ALL PARTS ARE PRESENT. READ INSTRUCTIONS CAREFULLY BEFORE STARTING INSTALLATION. ASSISTANCE IS RECOMMENDED.

1. Start the installation under the driver side of the vehicle. Locate and remove the (2) factory bolts on the bottom of the frame, **(Figure 1)**. Next, remove the bolt attaching the bottom of the outer bumper to the inner bumper bracket, **(Figure 1)**.
2. Select (1) Support Bracket. Attach the bent end of the Support Bracket to the bottom of the bumper with (1) 10mm Hex Bolt, (2) 10mm Flat Washers, (1) 10mm Lock Washer and (1) 10mm Hex Nut, **(Figure 2)**. Leave hardware loose at this time.
3. Next, select the driver/left side Frame Bracket. Attach the Frame Bracket to the bottom of the frame with the included (2) 12-1.25mm x 45mm Special Fine Thread Hex Bolts, (2) 12mm Lock Washers and (2) 12mm Flat Washers, **(Figure 3)**. Snug but do not tighten hardware.
4. Attach the Support Bracket to the inside of the Frame Bracket with (1) 10mm Hex Bolt, (2) 10mm Flat Washers, (1) 10mm Lock Washer and (1) 10mm Hex Nut, **(Figure 4)**. Snug but do not tighten hardware.
5. Repeat **Steps 1—4** to install the passenger side Frame and Support Brackets.
6. Select the Rear Step. Place the Rear Step on top of the (2) Frame Brackets. Select (2) 6mm Double Bolt Plates, **(Figure 5)**. Locate the channels in the bottom of the Rear Step, **(Figure 6)**. Insert the Bolt Plates into the channels close to the Brackets. Lift the Step with Bolt Plates up and guide the studs down through the Brackets.
7. Attach the Rear Step to the Brackets with (4) 6mm Flat Washers, (4) 6mm Lock Washers and (4) 6mm Hex Nuts, **(Figure 7)**. Do not tighten hardware at this time.
8. Level and adjust the Rear Step and fully tighten all hardware.
9. Do periodic inspections to the installation to make sure that all hardware is secure and tight.

To protect your investment, wax this product after installing. Regular waxing is recommended to add a protective layer over the finish. Do not use any type of polish or wax that may contain abrasives that could damage the finish. Mild soap may be used also to clean the Rear Step.

Driver/left Side Installation Pictured

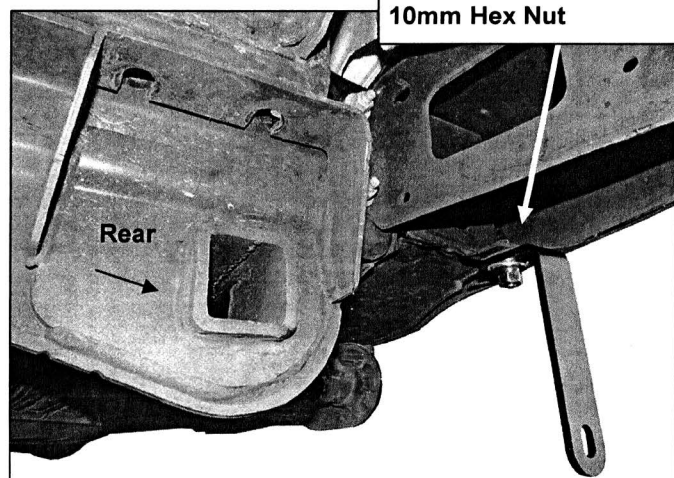


(Fig 1) Driver side pictured from below

Remove (2) factory bolts from bottom of frame (model equipped with receiver hitch pictured)

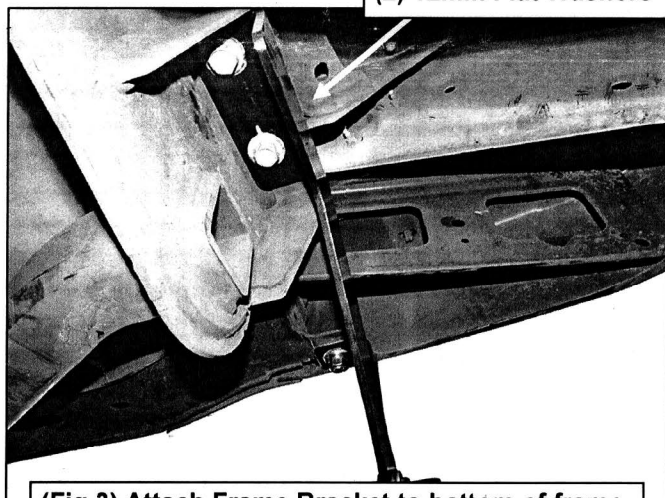
Remove factory bolt attaching bottom of bumper to inner bracket

10mm x 30mm Hex Bolt
(2) 10mm Flat Washers
10mm Lock Washer
10mm Hex Nut



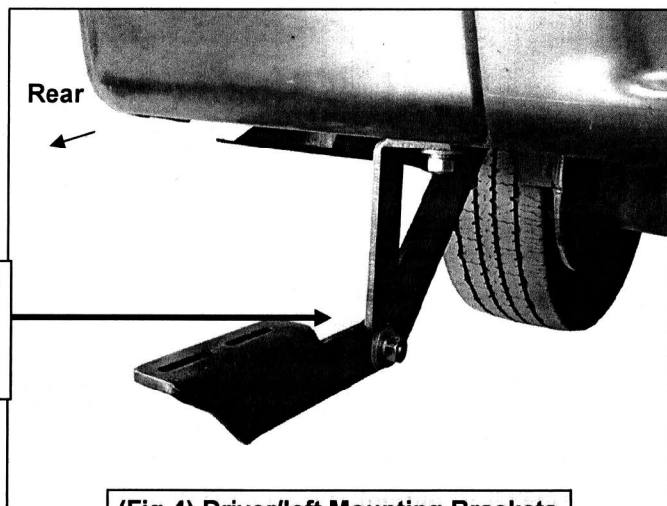
(Fig 2) Attach Support Bracket to bottom of bumper

(2) 12-1.25mm x 45mm
Fine Thread Hex Bolts
(2) 12mm Lock Washers
(2) 12mm Flat Washers

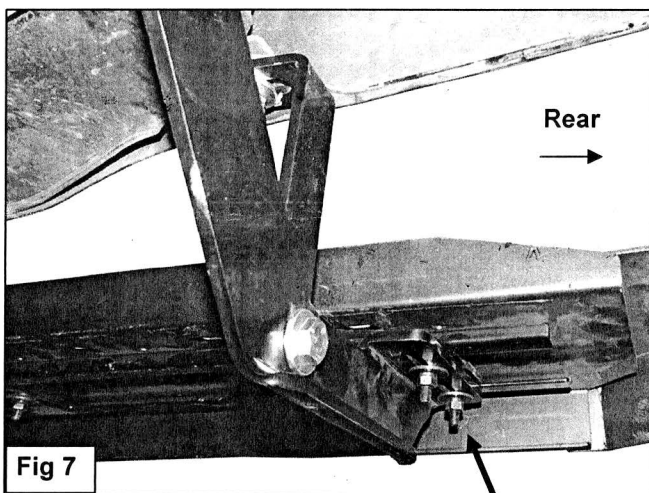
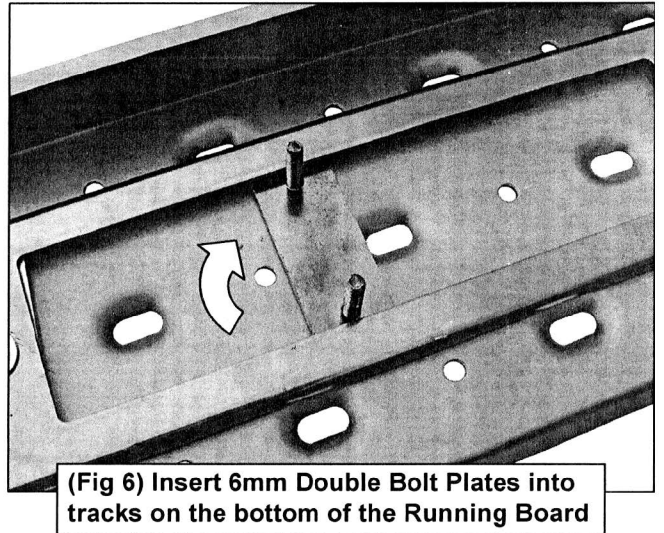
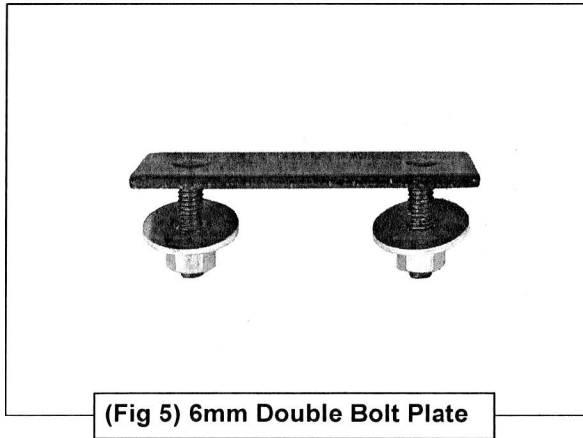


(Fig 3) Attach Frame Bracket to bottom of frame

10mm x 30mm Hex Bolt
(2) 10mm Flat Washers
10mm Lock Washer
10mm Hex Nut



(Fig 4) Driver/left Mounting Brackets



- (2) 6mm Flat Washers
- (2) 6mm Lock Washers
- (2) 6mm Hex Nuts

