



**TEL: 1-866-XANATOS**

## **INSTALLATION INSTRUCTIONS**

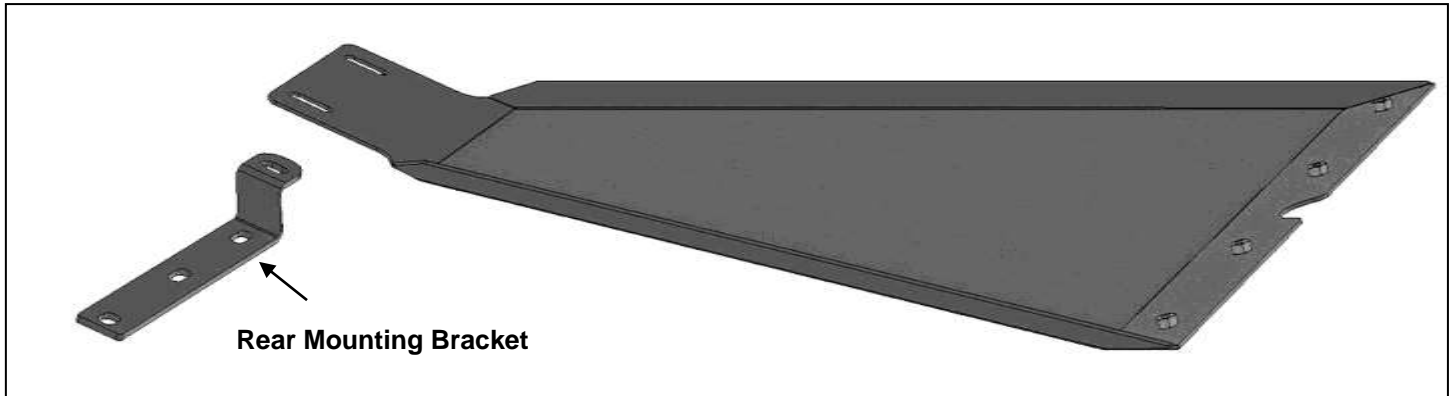
**MD1 FRONT BUMPER SKID PLATE**

**2016-18 CHEVY SILVERADO 1500**

**PART# AFB-SI17-SK**

## PARTS LIST:

|   |                              |   |                               |
|---|------------------------------|---|-------------------------------|
| 1 | MD1 Skid Plate               | 8 | 8mm x 24mm x 2mm Flat Washers |
| 1 | Mounting Bracket             | 6 | 8mm Lock Washers              |
| 6 | 8mm x 25mm Button Head Bolts | 2 | 8mm Hex Nuts                  |
|   |                              | 1 | 5mm Wrench                    |



## PROCEDURE:

**REMOVE CONTENTS FROM BOX. VERIFY ALL PARTS ARE PRESENT. READ INSTRUCTIONS CAREFULLY BEFORE STARTING INSTALLATION. ASSISTANCE IS RECOMMENDED. CUTTING IS REQUIRED.**

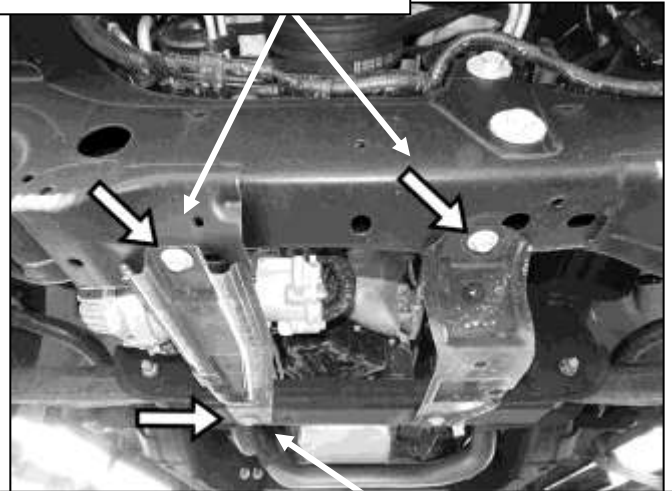
1. From under the vehicle, locate and remove the factory plastic splash guard, **(Figure 1)**.
2. Starting at the driver/left side of the factory skid plate, remove only the forward hex bolt attaching the skid plate to the bottom of the crossmember, **(Figure 2)**. On the passenger/right side skid plate, loosen the rear bolt and remove the forward bolt attaching the skid plate to the crossmember, **(Figure 2)**. **NOTE:** Hex bolts are also accessible with splash guard in place.
3. Next, mark the location and cut an opening in the splash to insert the rear Mounting Bracket through the cover and between the skid plate and crossmember, **(Figure 3)**. **NOTE:** Factory splash guard must be cut to install the Rear Mounting Bracket.
4. Reinstall the splash guard but leave all hardware loose, **(Figure 4)**.
5. Insert the Rear Mounting Bracket through the opening in the splash guard. Slide the flat end of the Bracket between the factory skid plate and the crossmember, **(Figure 5)**. Reuse the factory hex bolt to attach the Rear Bracket. Line up the remaining bent end (driver/left side) with the threaded hole in the crossmember. Reuse the factory hex bolt to attach the Bracket to the splash guard, skid plate and crossmember, **(Figure 5)**. **IMPORTANT:** On the passenger/right side, the flat end of the Bracket will slide between the factory skid plate and the crossmember. On the driver/left side, the bent end of the Bracket will attach over the splash guard and factory steel skid plate.
6. Carefully unwrap the MD1 Skid Plate. With assistance, line up the front of the Skid Plate with the back of the MD1 Bumper. Attach the Skid Plate to the Bumper with the included (4) 8mm Button Head Bolts, (4) 8mm Lock Washers and (4) 8mm Flat Washers, **(Figure 6)**. Leave hardware loose at this time.
7. Attach the narrow tail end of the MD1 Skid Plate to the previously installed Mounting Bracket with the included (2) 8mm Button Head Bolts, (4) 8mm Flat Washers, (2) 8mm Lock Washers and (2) 8mm Hex Nuts, **(Figure 7)**. Leave loose at this time.
8. Level and adjust the Skid Plate and fully tighten all hardware. **NOTE:** Make sure to tighten the factory hex bolts attaching the factory steel skid plates to the vehicle, **(see Step 2, Fig 2)**.
9. Do periodic inspections to the installation to make sure that all hardware is secure and tight.

**To protect your investment,** Do not use any type of polish or wax that may contain abrasives that could damage the finish. Mild soap may be used to clean the Skid Plate.

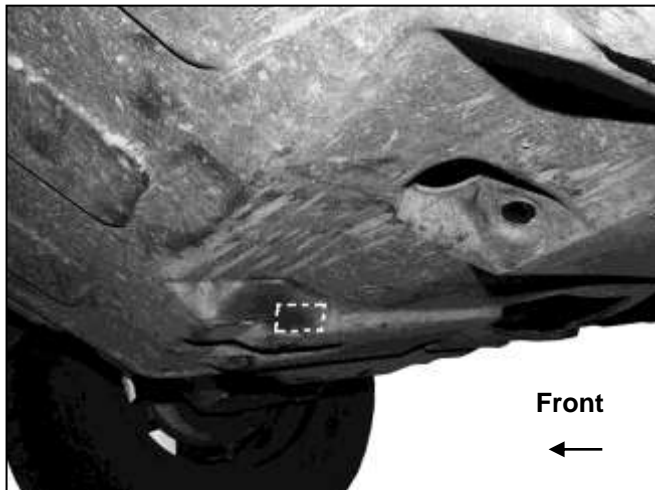


(Fig 1) Temporarily remove plastic splash guard.

Remove the (2) hex bolts  
attaching the skid plates to the  
forward crossmember (arrows)



(Fig 2) Loosen the (1) hex bolt attaching the  
passenger/right side skid plate to the rear  
crossmember

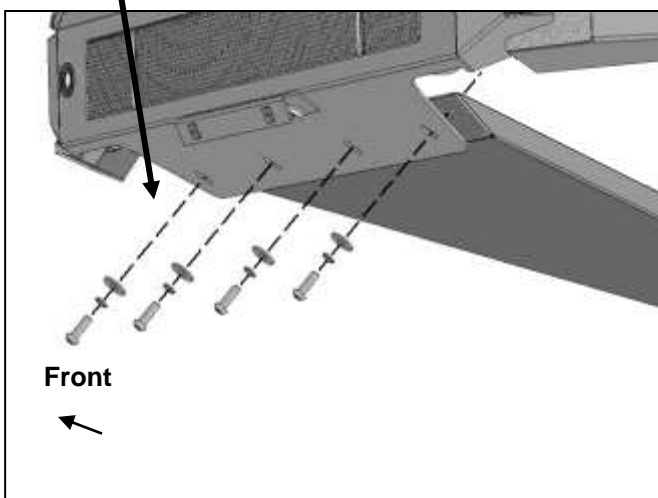


(Fig 3) Mark the splash guard to cut for Rear  
Bracket clearance. Note: Insert flat  
passenger/right side of Bracket through slot and  
between skid plate and crossmember

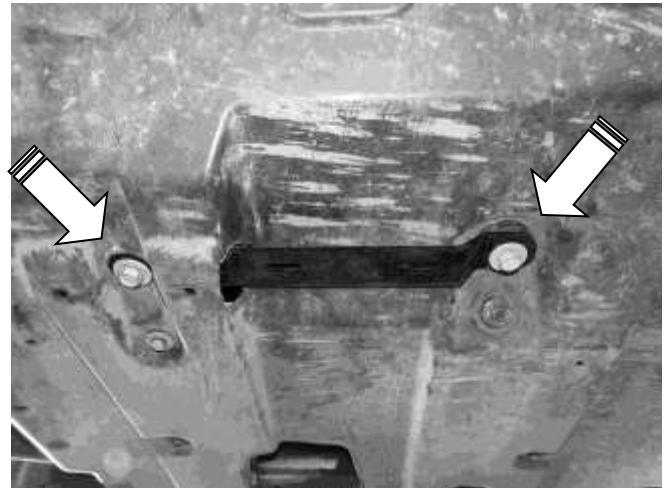


(Fig 4) Reinstall splash guard. Note insert flat passenger/right side of Bracket through slot and between skid plate and crossmember

- (4) 8mm Button Head Bolts
- (4) 8mm Lock Washers
- (4) 8mm Flat Washers

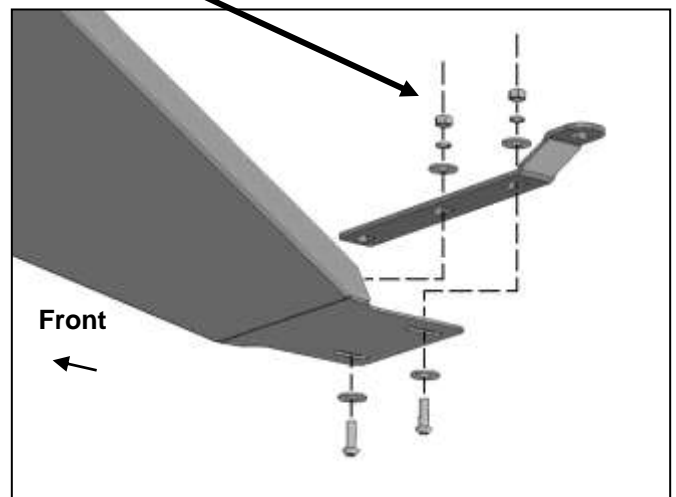


(Fig 6) Attach MD1 Skid Plate to back of Bumper



(Fig 5) Insert flat end of Rear Bracket through hole cut in splash guard. Insert end of Bracket between steel skid plate and crossmember (behind splash guard). Reuse factory hex bolts (arrows) to attach Bracket

- (2) 8mm Button Head Bolts
- (4) 8mm Flat Washers
- (2) 8mm Lock Washers
- (2) 8mm Hex Nuts



(Fig 7) Attach MD1 Skid Plate to Rear Bracket