

INSTALLATION INSTRUCTION

2021 Toyota Sienna Rear Bumper

Guard Double Layers Bracket - USES 04

PART # CRDL-TOT701B



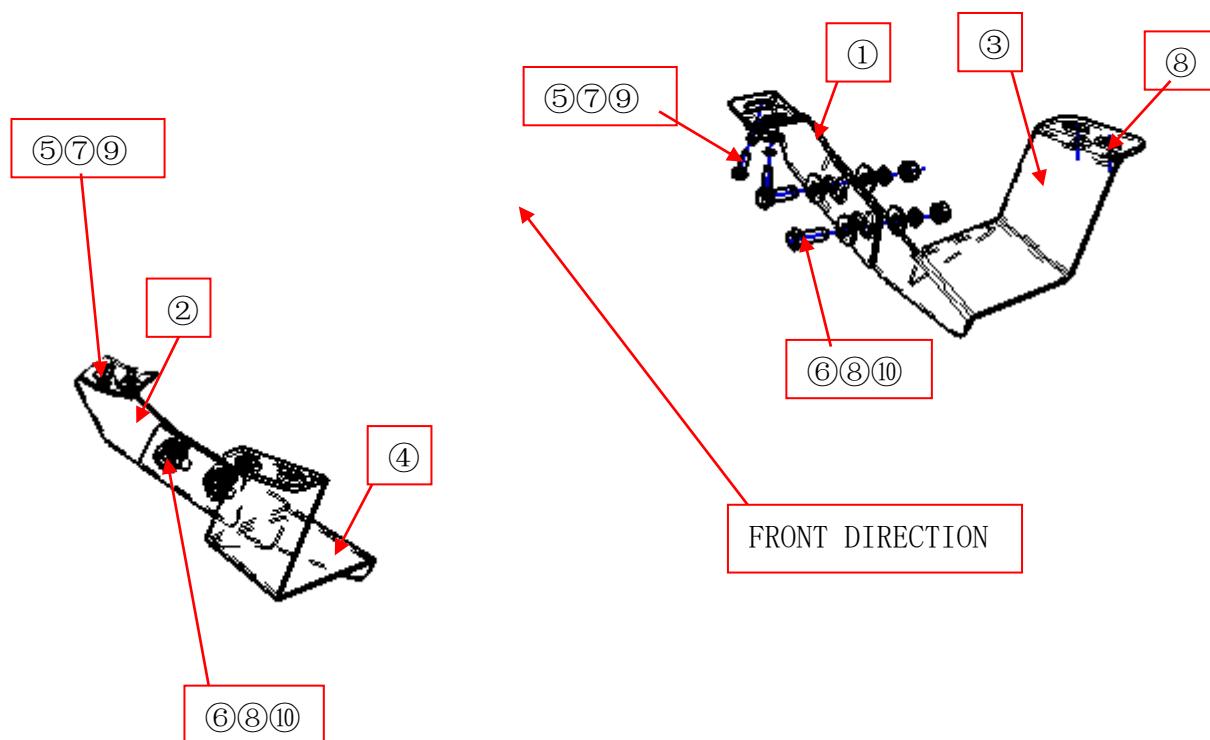
Attention:

- Please read this installation menu before installing this part. Protect your car properly in case there is any scratch might have.
- You may need to periodically to re-tighten all hardware for safety use after installation.
- Installation pictures are only for your reference, there might be some differences between pictures and real parts but no affect for your fitting.

PART LIST

NO.	NAME	QTY	REMARK	NO.	NAME	QTY	REAMRK
①	L-BRACKET 1	1		⑨	SPRING WASHER	4	Φ8
②	R-BRACKET 1	1		⑩	SPRING WAHSER	4	Φ12
③	L-BRACKET 2	1		⑪	HEXAGON NUT	4	M12
④	R-BRACKET 2	1					
⑤	HEXAGON BOLT	4	M8*25				
⑥	HEXAGON BOLT	4	M12*35				
⑦	LARGE WASHER	4	Φ8*25*2.0				
⑧	LARGE WASHER	12	Φ12*30*3.0				
REMARK:THE LEFT AND RIGHT SIDES ARE INSTALLED IN THE SAME WAY.							

INSTALLATION PICTURE

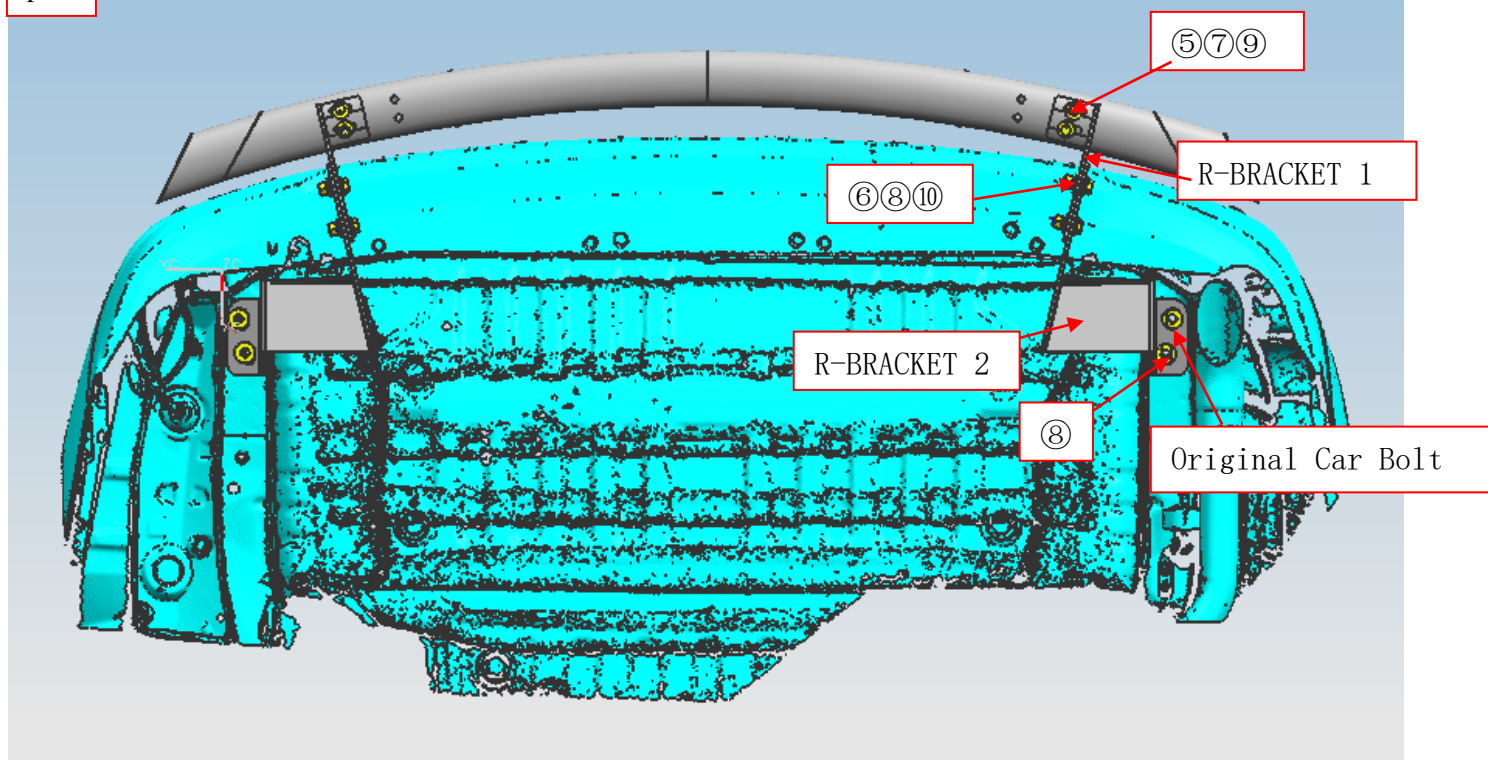


INSTALLATION PROCEDURE

Step 1: Check all hardware with part list to make sure it is completed.

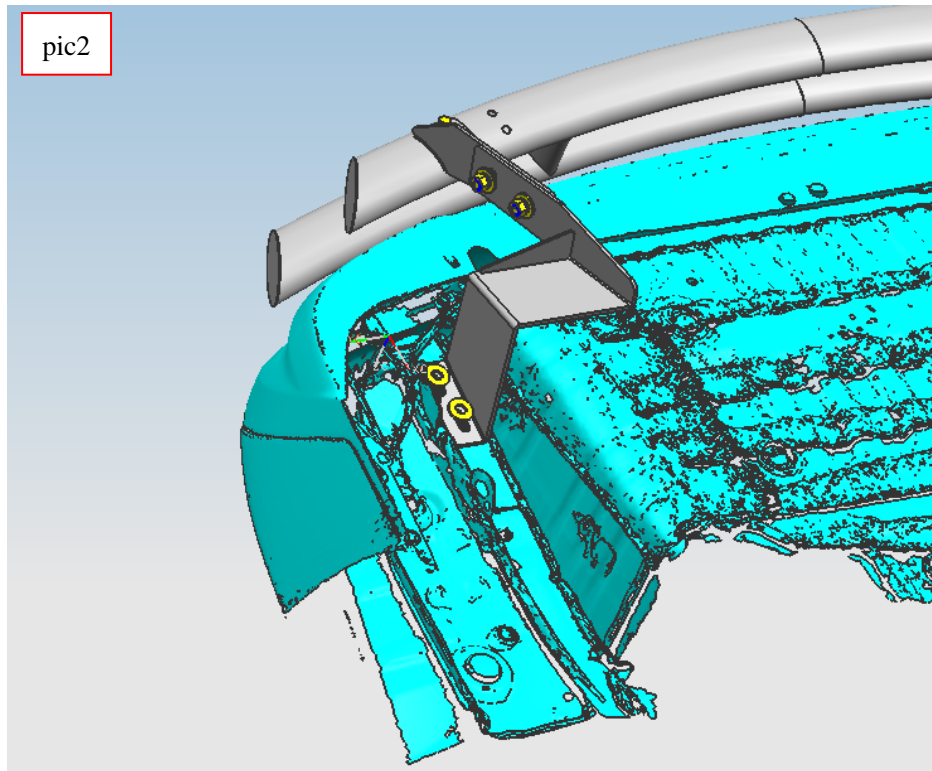
Step 2: Refer to the bottom hole bitmap to install the left and right bracket as shown below

pic1



step3: Install the grille guard on the bracket and then adjust the installation position of the bracket according to the position of the grille guard.

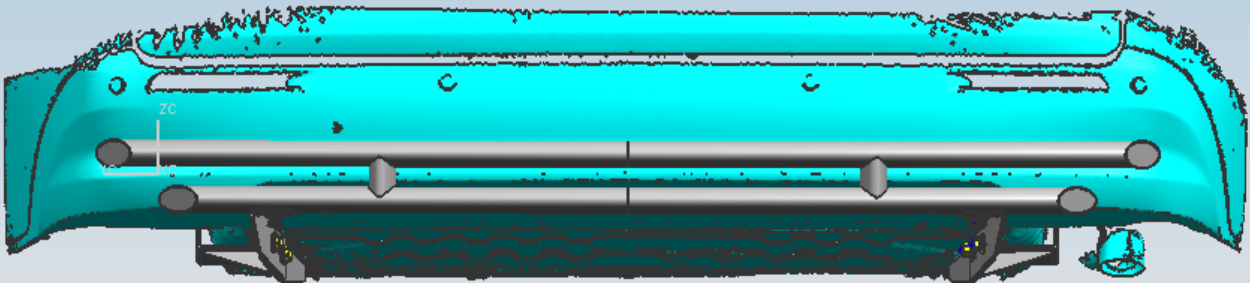
pic2



Step 4: Check whether the standard parts are complete, and then tighten the standard parts.

Step 5: The final installation effect is shown below

pic3



Disclaimer: Caused due to improper installation initiates or some related problem and losses, are beyond our company's quality assurance.