



TEL: 1-866-XANATOS

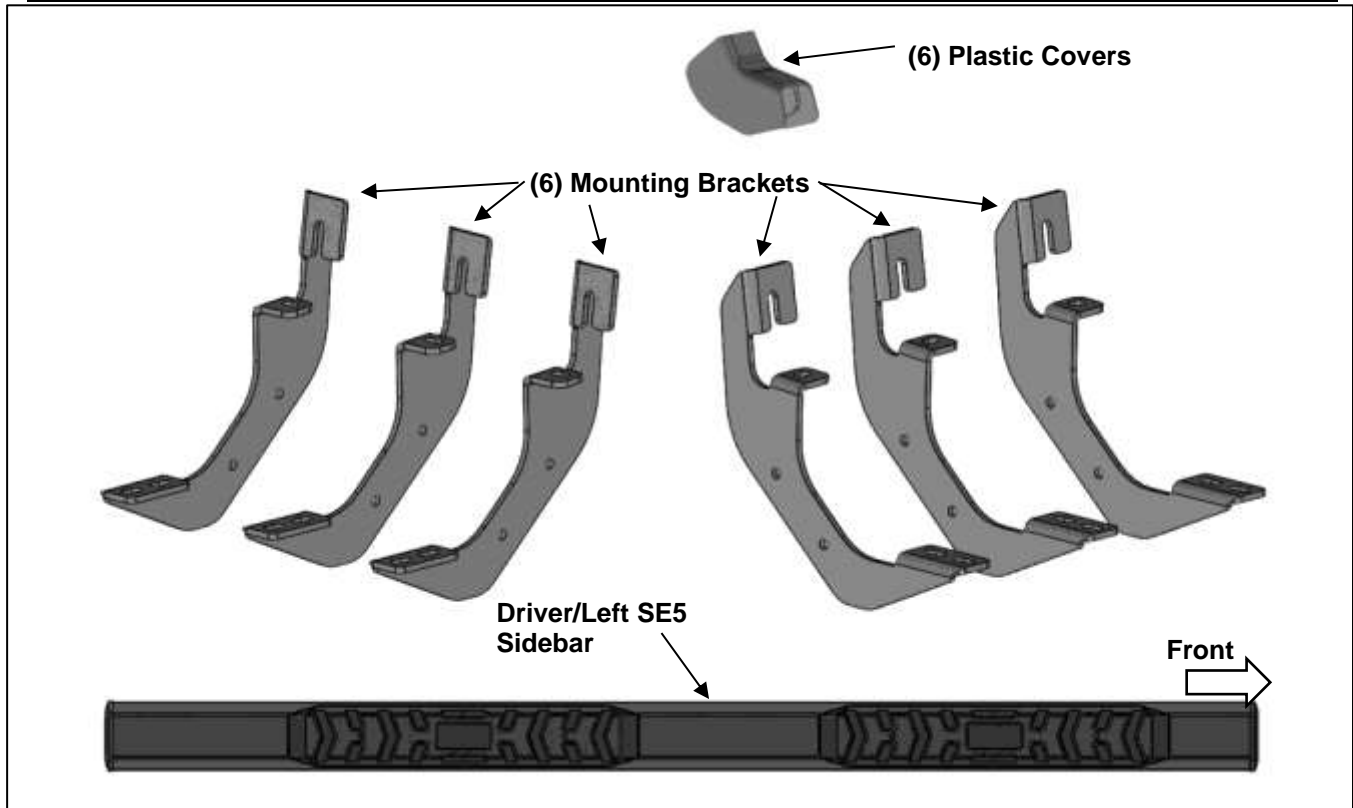
INSTALLATION INSTRUCTIONS

**EPIC RUNNING BOARD
2015-2021 CHEVY COLORADO/GMC CANYON EXTENDED CAB**

PART# E0169

PARTS LIST:

1	Driver/Left SE5 Sidebar	12	8mm x 20mm T-Bolts
1	Passenger/Right SE5 Sidebar	24	8mm x 24mm OD x 2mm Flat Washers
6	Mounting Brackets	24	8mm Lock Washers
6	Plastic Covers	12	8mm Hex Nuts
12	Plastic Clips	12	8mm Clip Nuts
12	8mm x 25mm Hex Bolts		



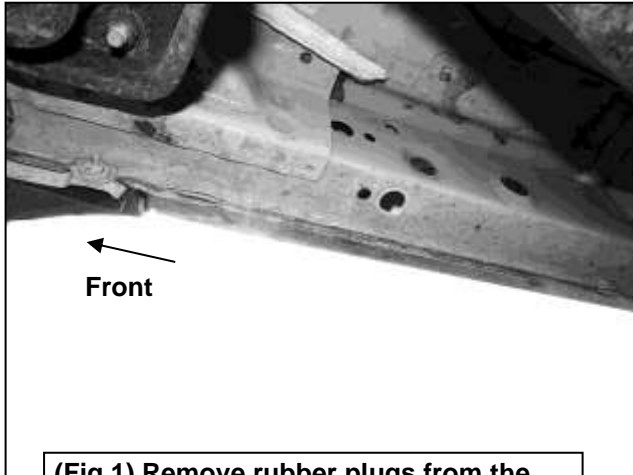
PROCEDURE:

REMOVE CONTENTS FROM BOX. VERIFY ALL PARTS ARE PRESENT. READ INSTRUCTIONS CAREFULLY BEFORE STARTING INSTALLATION. ASSISTANCE IS RECOMMENDED.

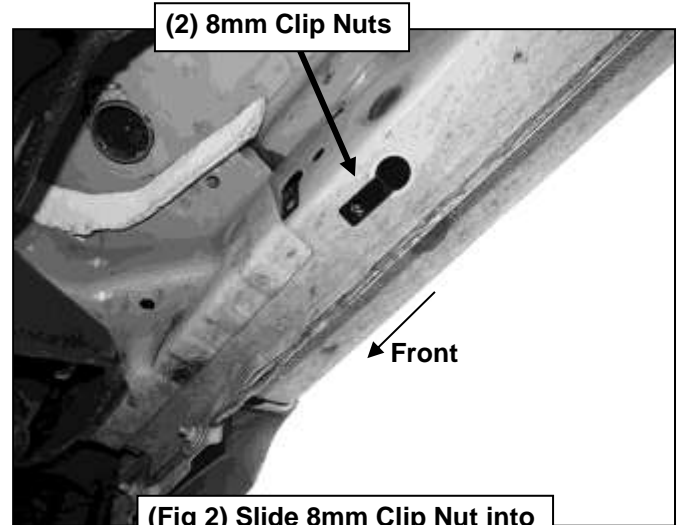
1. Start the installation under the Passenger/Right side of the vehicle. Locate the front mounting location along the bottom and inner side of the body panel, **(Figure 1)**. Installation will use the 1st, 2nd and 4th mounting locations. **NOTE:** It may help to hold a Bracket up in place to help determine the mounting holes to use along the bottom and inner side of the body.
2. Remove rubber plugs from the front location. Select (2) 8mm Clip Nuts. Slide each Clip Nut into the large hole and over the smaller hole next to it. Line up threaded nut on the Clip Nut with smaller hole in body panel, **(Figure 2)**.
3. Select (1) Mounting Bracket. Attach the Bracket to the (2) Clip Nuts in the vehicle with (2) 8mm Hex Bolts, (2) 8mm Lock Washers and (2) 8mm Flat Washers, **(Figure 3)**. Do not tighten hardware.
4. Select (1) Plastic Cover. Attach the Cover to the Mounting Bracket with (2) Plastic Clips, **(Figure 4)**.
5. Repeat **Steps 1—4** to attach the remaining (2) Mounting Brackets to the center and rear locations, **(Figures 5 & 6)**. Do not tighten hardware.
6. Select (1) SE5 Sidebar. Insert (6) T-Bolts into the channels in the bottom of the Sidebar, (3) per channel, **(Figure 7)**. Attach the Sidebar to the Mounting Brackets with (6) 8mm Flat Washers, (6) 8mm Lock Washers and (6) 8mm Hex Nuts, **(Figure 8)**. Do not tighten hardware.
7. Repeat **Steps 1—6** to attach (1) SE5 Sidebar to the Driver/Left side.
8. Do periodic inspections to the installation to make sure that all hardware is secure and tight.

To protect your investment, Do not use any type of polish or wax that may contain abrasives that could damage the finish. Mild soap may be used to clean the Sidebars.

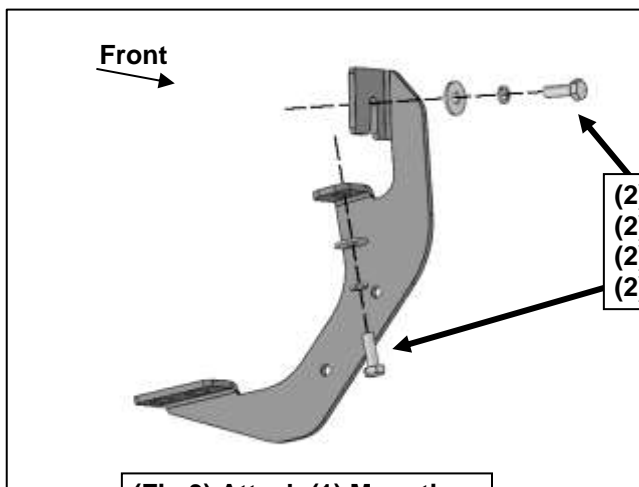
Passenger/Right Side Installation Pictured



(Fig 1) Remove rubber plugs from the Passenger/Right front mounting location

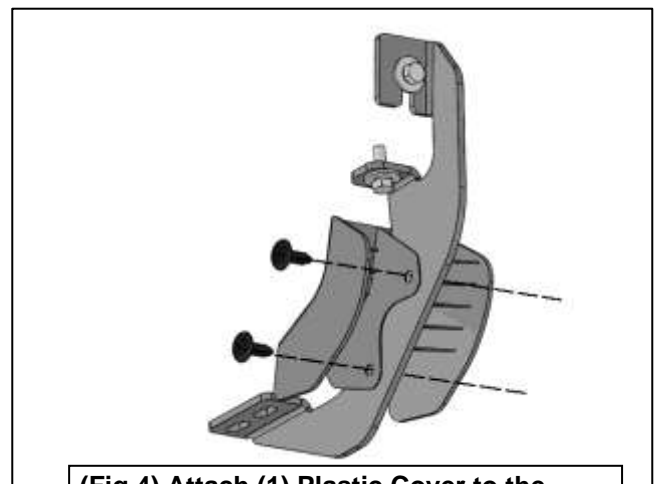


(Fig 2) Slide 8mm Clip Nut into large hole and over small hole



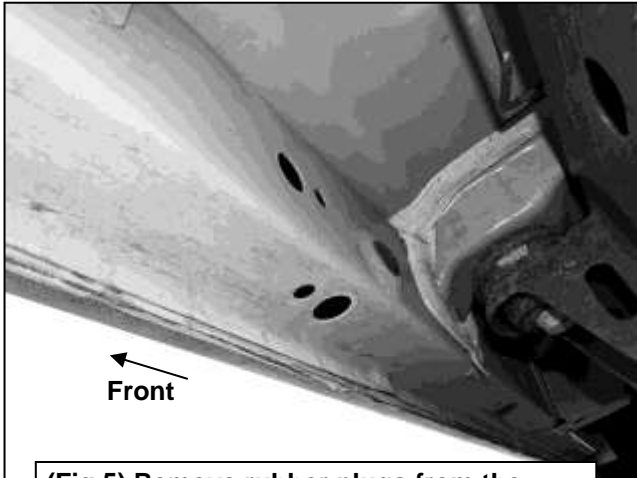
(Fig 3) Attach (1) Mounting Bracket to the Clip Nuts

- (2) 8mm Hex Bolts
- (2) 8mm Lock Washers
- (2) 8mm Flat Washers
- (2) 8mm Clip Nuts



(Fig 4) Attach (1) Plastic Cover to the Mounting Bracket to with (2) Plastic Clips

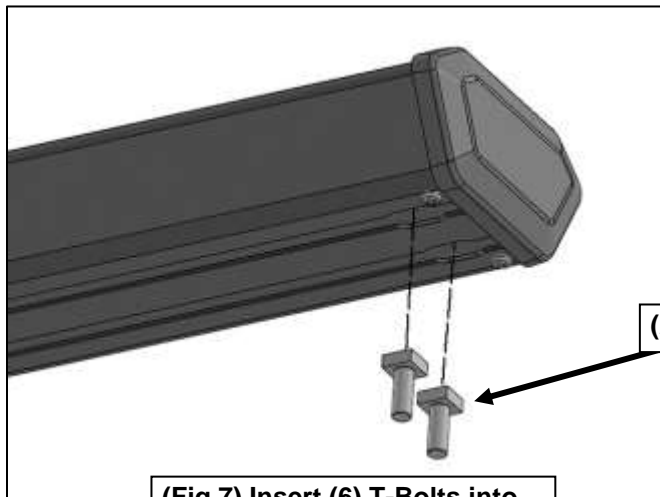
Passenger/Right Side Installation Pictured



(Fig 5) Remove rubber plugs from the Passenger/Right center mounting location

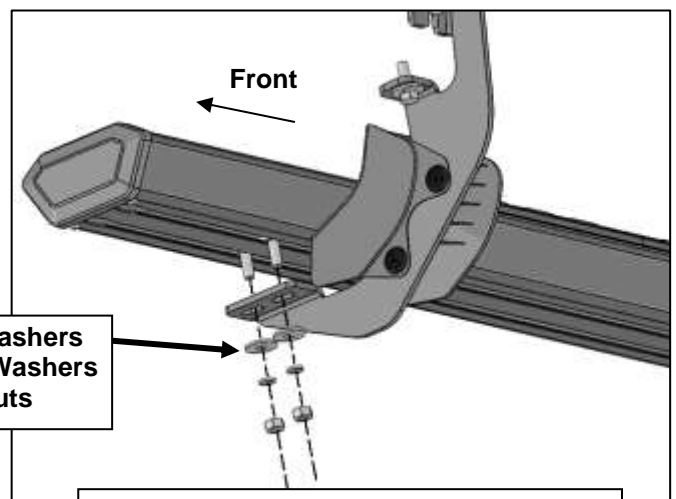


(Fig 6) Remove rubber plugs from the Passenger/Right rear mounting location



(Fig 7) Insert (6) T-Bolts into the channels in the bottom of the Sidebar, (3) per channel

(2) 8mm Flat Washers
(2) 8mm Lock Washers
(2) 8mm Hex Nuts



(Fig 8) Attach the Passenger/Right Tyger Lander to the Rear Mounting Bracket