



**BLACK HORSE  
OFF ROAD®**

**TEL : 1-866-XANATOS**

## **INSTALLATION INSTRUCTIONS**

**SE5 SIDEBAR**

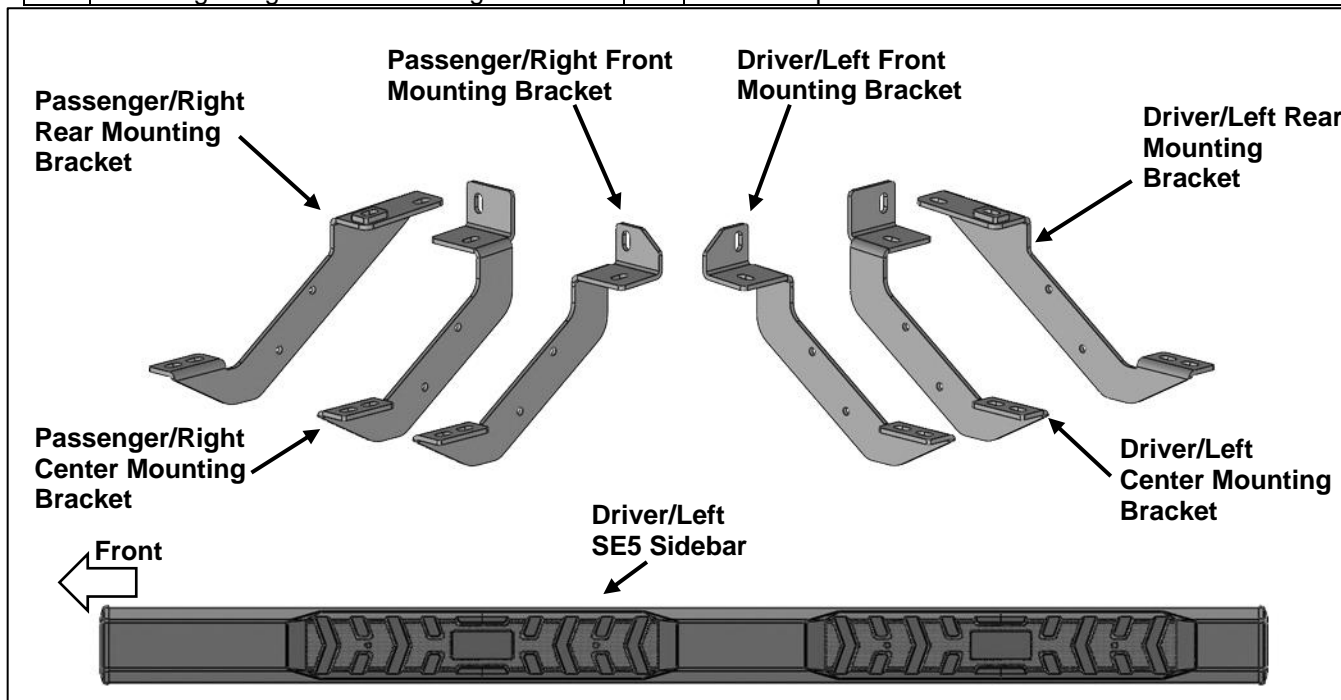
**2022-2024 NISSAN PATHFINDER**

**(Incl. Models with Exterior Ground Lighting/Welcome Lighting)**

**PART#E31/E3169**

## PARTS LIST:

2	SE5 Sidebars	8	8mm x 25mm Hex Bolts
1	Driver/Left Front Mounting Bracket	12	8mm x 20mm T-Bolts
1	Passenger/Right Front Mounting Bracket	24	8mm x 24mm OD x 2mm Flat Washers
1	Driver/Left Center Mounting Bracket	24	8mm Lock Washers
1	Passenger/Right Center Mounting Bracket	16	8mm Hex Nuts
1	Driver/Left Rear Mounting Bracket	6	Plastic Covers
1	Passenger/Right Rear Mounting Bracket	12	Plastic Clips

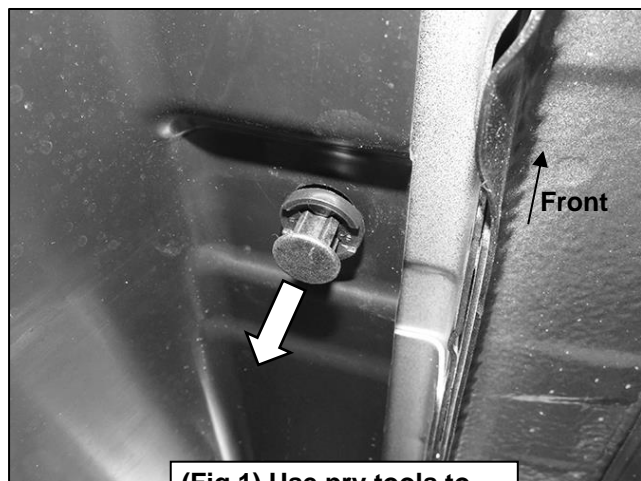


## PROCEDURE:

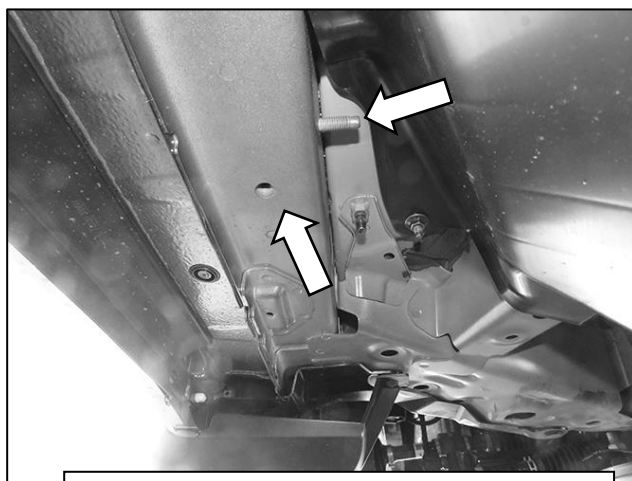
- REMOVE CONTENTS FROM BOX. VERIFY ALL PARTS ARE PRESENT. READ INSTRUCTIONS CAREFULLY. USE ILLUSTRATION TO IDENTIFY BRACKETS.**
- Starting on the Driver/Left front of the vehicle, use pry tools to remove plugs and the cover on the bottom of the vehicle, **(Figure 1)**. Select the Driver/Left Front Mounting Bracket. Attach the Mounting Bracket to the threaded stud on the front location with (1) 8mm Flat Washer, (1) 8mm Lock Washer and (1) 8mm Hex Nut, **(Figures 2, 3 & 5)**. Do not tighten hardware.
- Select (1) Plastic Cover. Attach the Cover to the Mounting Bracket with (2) Plastic Clips, **(Figure 4)**.
- Attach the Mounting Bracket to the threaded insert with (1) 8mm Hex Bolt, 8mm Lock Washer and (1) 8mm Flat Washer, **(Figures 2, 3 & 5)**. Do not tighten hardware.
- Move along the body panel to the center mounting location, **(Figure 6)**. Select the Driver/Left Center Mounting Bracket. Repeat **Steps 2 & 3** to attach the Bracket, **(Figure 7)**. Do not tighten hardware.
- Continue to the rear mounting location in front of the rear tire, **(Figure 8)**. Select the Driver/Left Rear Mounting Bracket. Attach the Bracket to the (2) threaded inserts with (2) 8mm Hex Bolts, (2) 8mm Lock Washers and (2) 8mm Flat Washers, **(Figures 8—10)**. Do not tighten hardware.
- Select the Driver/Left SE5 Sidebar. Insert (6) T-Bolts into the channels in the bottom of the Sidebar, (3) per channel, **(Figure 11)**. Attach the Sidebar to the Mounting Brackets with (8) 8mm Flat Washers, (8) 8mm Lock Washers and (8) 8mm Hex Nuts, **(Figure 12)**. Do not tighten hardware.
- Level and adjust the SE5 Sidebar and tighten all hardware.
- Level and adjust the Sidebar and fully tighten all hardware.
- Select the factory cover. Line up the cover to the factory mounting holes. Mark where the Center Mounting Bracket sits. Using a hacksaw or sharp knife, cut the cover to allow the Bracket to go through. **(Figure 13)**. Only cut a little at a time.
- Repeat **Steps 2—10** to attach the Passenger/Right Sidebar.
- Do periodic inspections to the installation to make sure that all hardware is secure and tight.

**To protect your investment,** Do not use any type of polish or wax that may contain abrasives that could damage the finish. Mild soap may be used to clean the Running Boards.

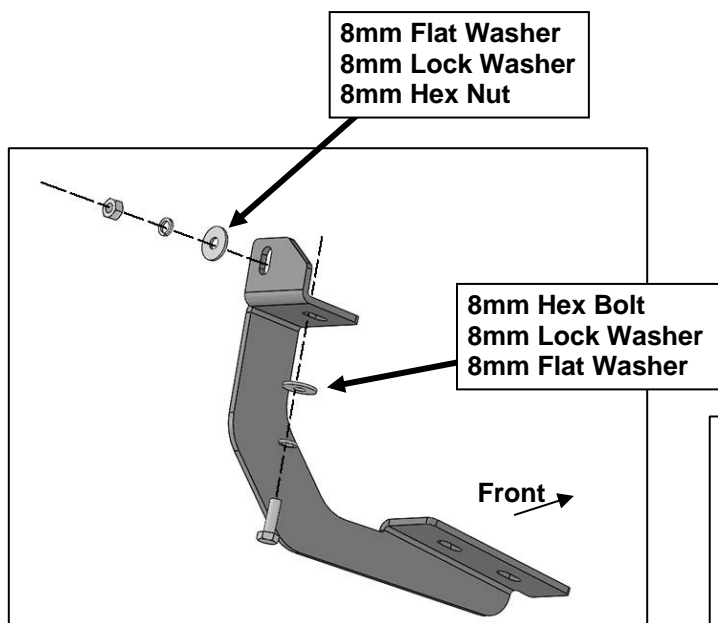
### Driver Side Installation Pictured



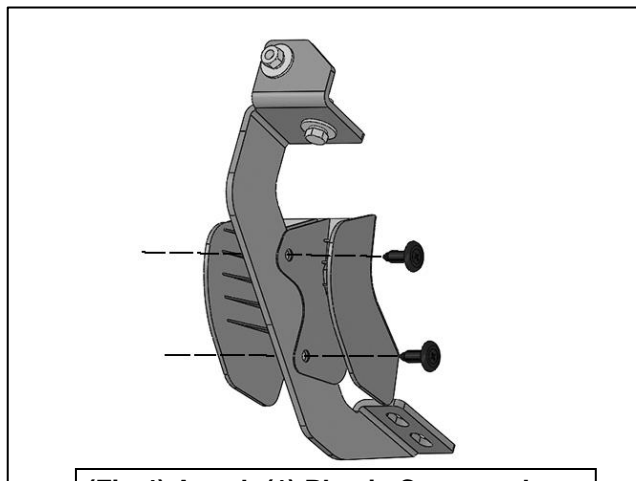
(Fig 1) Use pry tools to remove the plastic cover



(Fig 2) Driver/Left front mounting location



(Fig 3) Attach Driver/Left Front Mounting Bracket to the front mounting location

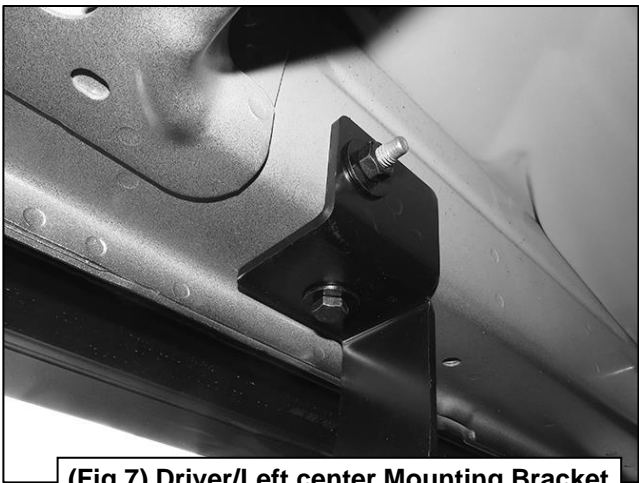


(Fig 4) Attach (1) Plastic Cover to the Mounting Bracket with (2) Plastic Clips

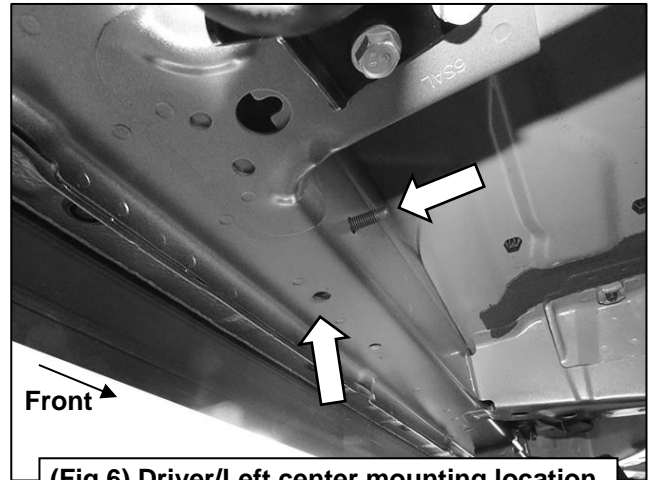
### Driver Side Installation Pictured



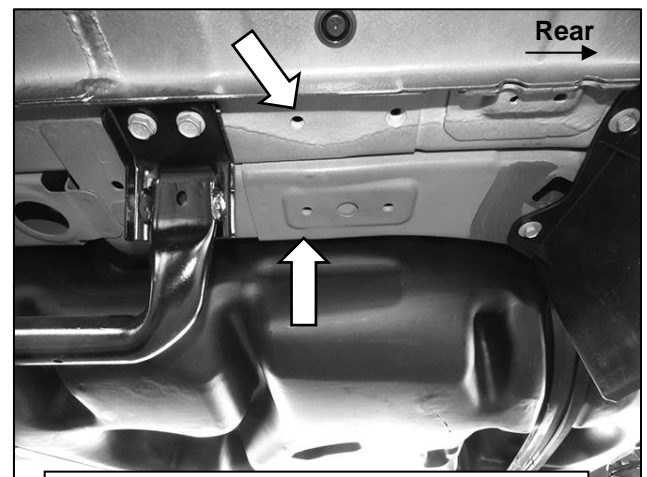
(Fig 5) Driver/Left Front Mounting Bracket attached to the front mounting location



(Fig 7) Driver/Left center Mounting Bracket attached to the center mounting location



(Fig 6) Driver/Left center mounting location



(Fig 8) Driver/Left rear mounting location

### Driver Side Installation Pictured

