

INSTALLATION INSTRUCTION

14-20 GX460

Double Layers Front Runner Bracket

PART # FD-LE05B



Attention:

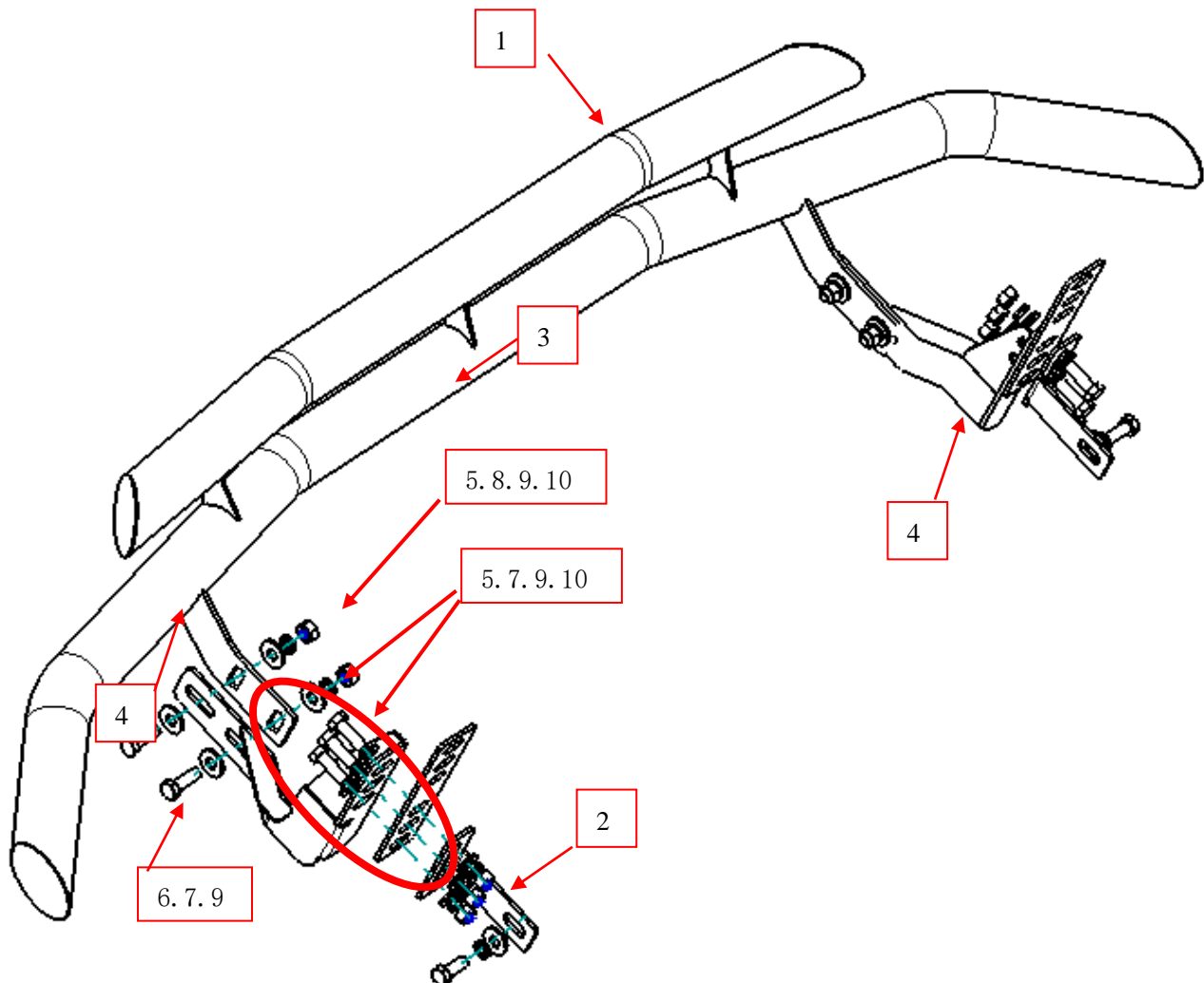
- Please read this installation menu before installing this part. Protect your car properly in case there is any scratch might have.
- You may need to periodically to re-tighten all hardware for safety use after installation.
- Installation pictures are only for your reference, there might be some differences between pictures and real parts but no affect for your fitting.

PART LIST

NO.	NAME	QTY	REMARK	NO.	NAME	QTY	REMARK
1	Front Guard	1		6	Hexagon Bolt (Fine Tooth)	2	M12x30
2	Bracket(Left/Right)	2		7	Large Washer	10	Φ12x35x3.0
3	Bracket2	2		8	Flat Washer	12	Φ12x25x2.5
4	Bracket(Left/Right)	2		9	Spring Washer	12	Φ12
5	Hexagon Bolt	10	M12x35	10	Hexagon Nut	10	M12

Remark: The installation is the same on the left and right sides.

INSTALLATION PICTURE

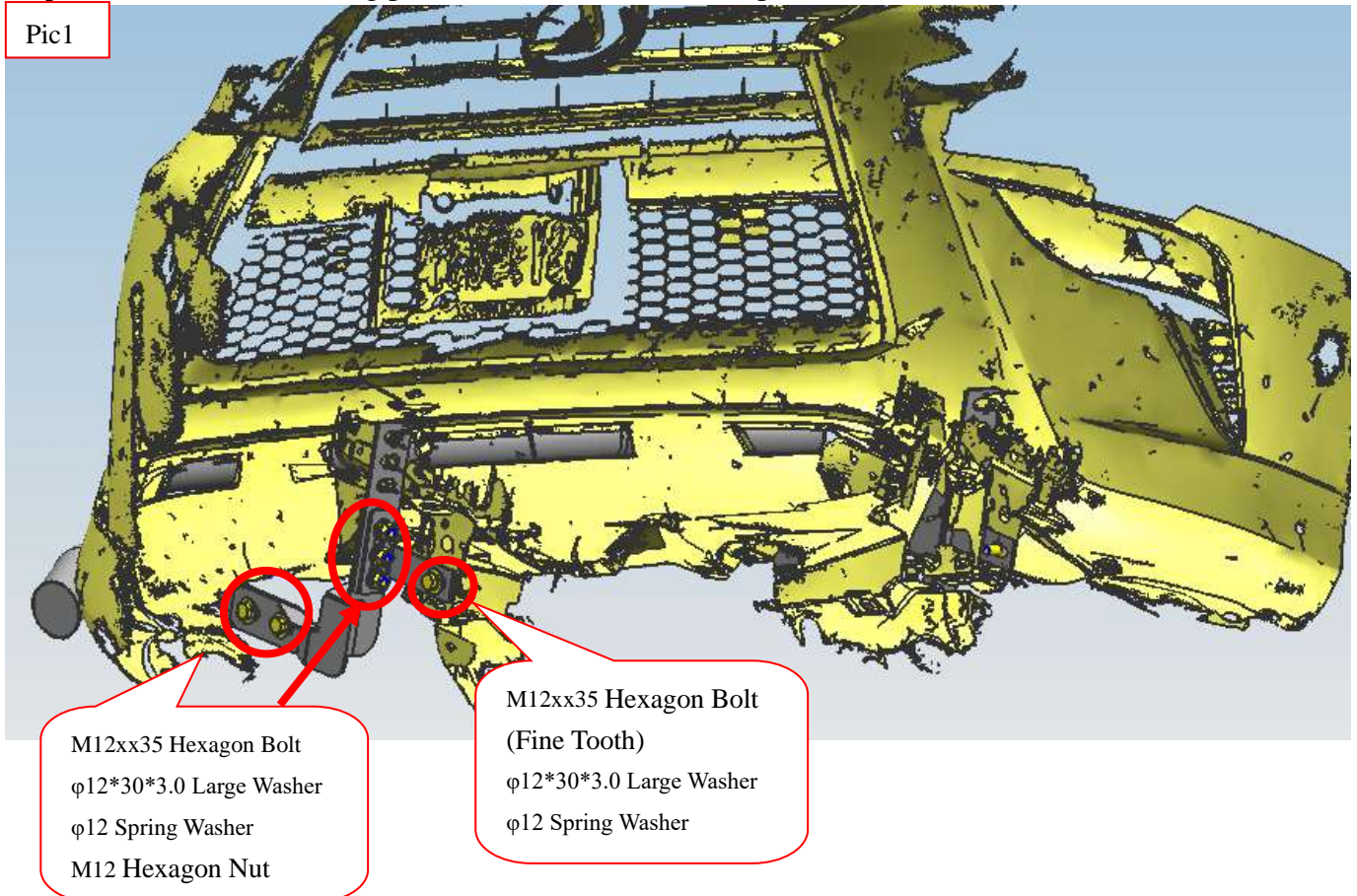


INSTALLATION PROCEDURE

Step 1: Refer to Part List to check if all hard ware are included.

Step 2: Refer to the following pictures to assemble the side panel and brackets on the two main tubes .

Pic1

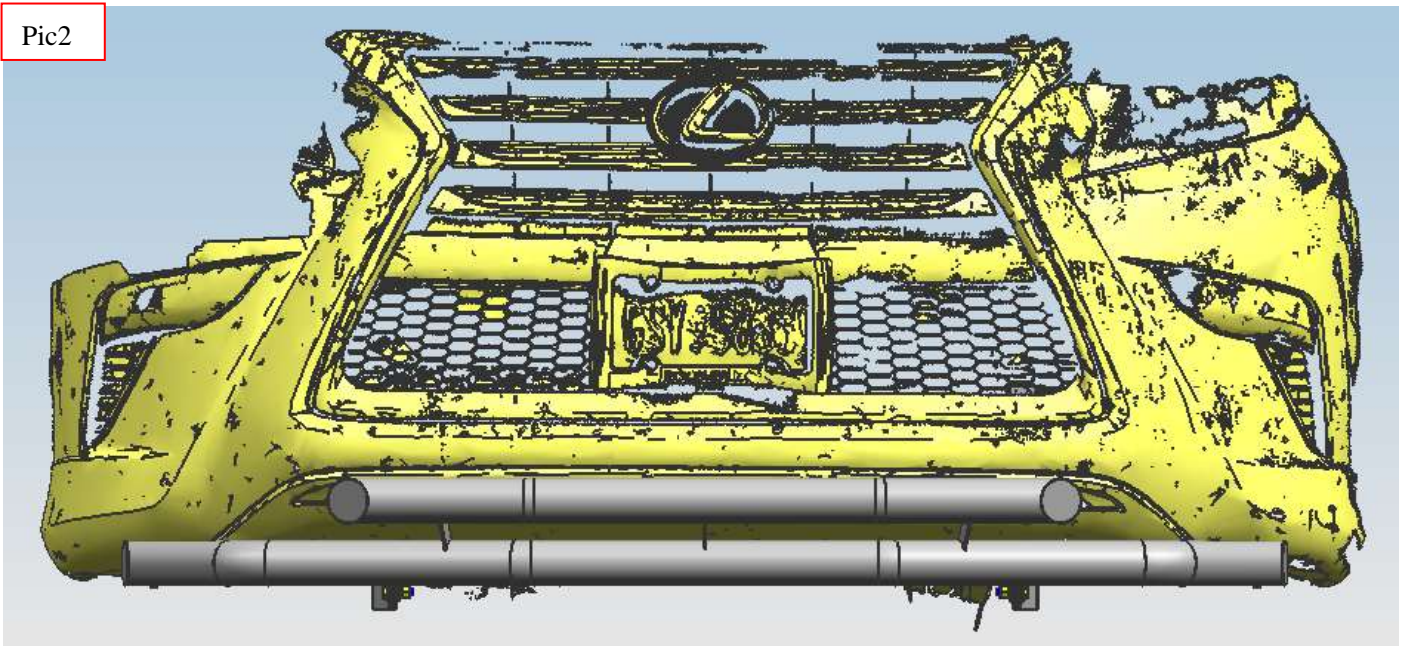


Step 3: Install the bar body on the bracket and adjust the mounting position of the bracket according to the position of the bar body.

Step 4: Check if all hard ware are installed and then fasten all to complete the installation.

Step 5: Easy Install refer Pic 2.

Pic2



Disclaimer: Caused due to improper installation initiates or some related problem and losses, are beyond our company's quality assurance.