

# **INSTALLATION INSTRUCTION**

**Max Beacon Bull Bar**

**11-12 TOYOTA HIGHLANDER**

**PART # MAB-TOF5207B**



# INSTALLATION INSTRUCTION

ITEM NO.:

DESCRIPTION: 3" BULL BAR WITH SKID PLATE FOR H-I-G-H-L-A-N-D-E-R 2011-2013 (SUS 304)

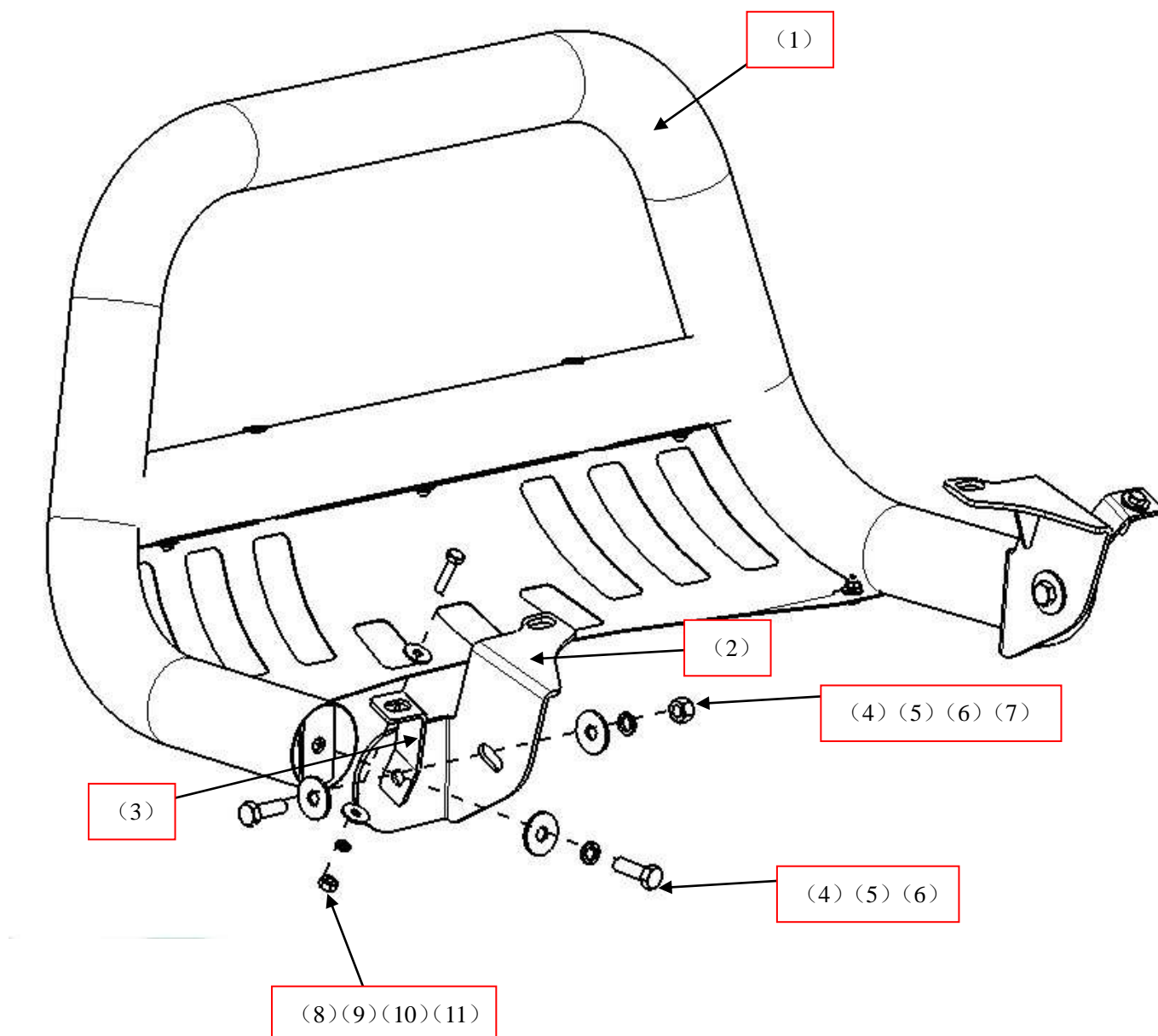
Attention:

- Please read this installation menu before installing this part. Protect your car properly in case there is any scratch might happen.
- You may need to periodically to re-tighten all hardware for safety use after installation.
- Installation pictures are only for your reference, there might be some differences between pictures and real parts but no effect for your fitting.

## PART LIST

No.	NAME	QTY	REMARK	No.	NAME	QTY	REMARK
(1)	Bull Bar	1		(7)	Hexagon Nut	2	M12
(2)	Mounting Bracket	2		(8)	Hexagon Head Bolt	2	M8*30
(3)	Fitting Kit	2		(9)	Extra Large Washer	4	φ8*30*2.0
(4)	Hexagon Head Bolt	4	M12*35	(10)	Spring Washer	2	φ8
(5)	Spring Washer	4	φ12	(11)	Hexagon Nut	2	M8
(6)	Extra Large Washer	6	φ12*35*3.0				

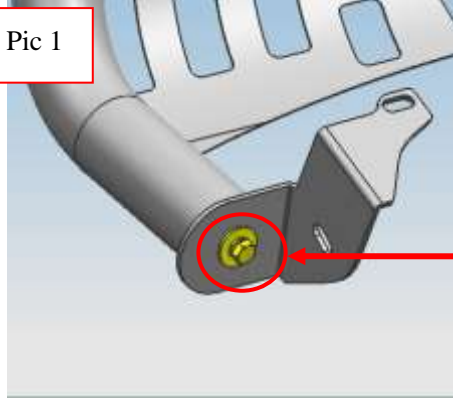
## INSTALLATION PICTURE



## INSTALLATION PROCEDURES

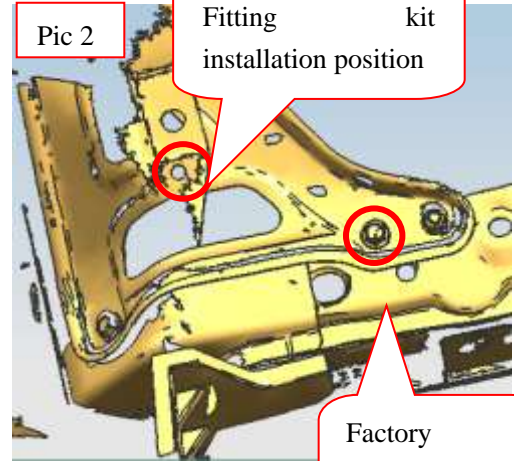
Step 1: Refer to the Part List to check if all hardware are included.

Step 2: Install the mounting brackets on the bull bar as following picture.



Pic 1

Hexagon head bolt  
M12\*35, spring washer  
 $\phi 12$ , and extra large  
washer  $\phi 12*35*3.0$

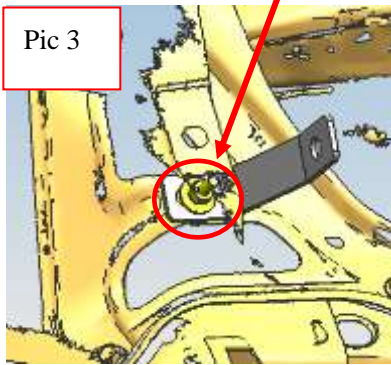


Pic 2

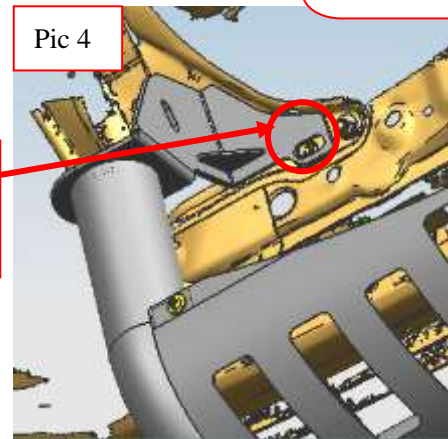
Fitting kit  
installation position

Factory  
hardware to fix  
the bracket.

Step 3: Refer to Pic 3 to install the fitting kit.



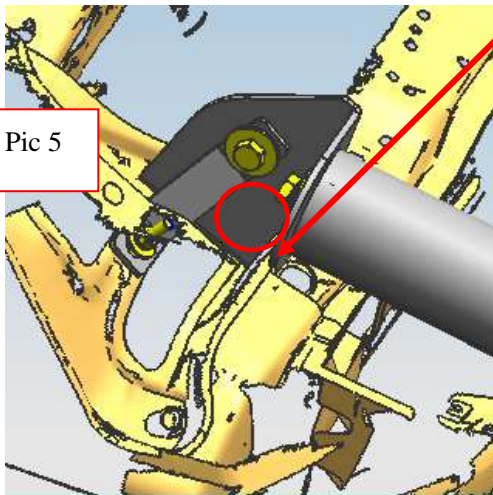
Pic 3



Pic 4

Factory  
hardware to fix  
the bracket.

Step 4: Refer to Pic 4 to install the bull bar with factory hardware.

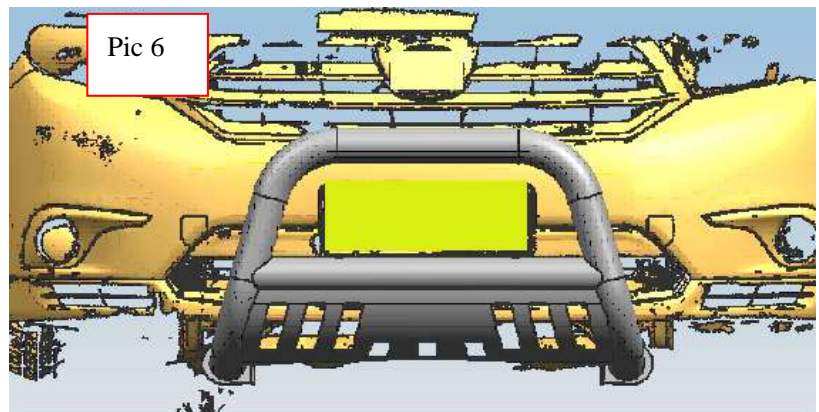


Pic 5

Step 5: Refer to Pic 5 to install the mounting bracket and fitting kit.

Step 6: Adjust the mounting bracket and fitting kit to the proper position according to the position of the bull bar.

Step 7: Check if all hardware are installed and then fasten all.



Pic 6

Disclaimer: Caused due to improper installation initiates some related problem and losses, are beyond our company's quality assurance.

