

INSTALLATION INSTRUCTION

Max Beacon Bull Bar

11-12 TOYOTA HIGHLANDER

PART # MAB-TOF5207S



INSTALLATION INSTRUCTION

ITEM NO.:

DESCRIPTION: 3" BULL BAR WITH SKID PLATE FOR H-I-G-H-L-A-N-D-E-R 2011-2013 (SUS 304)

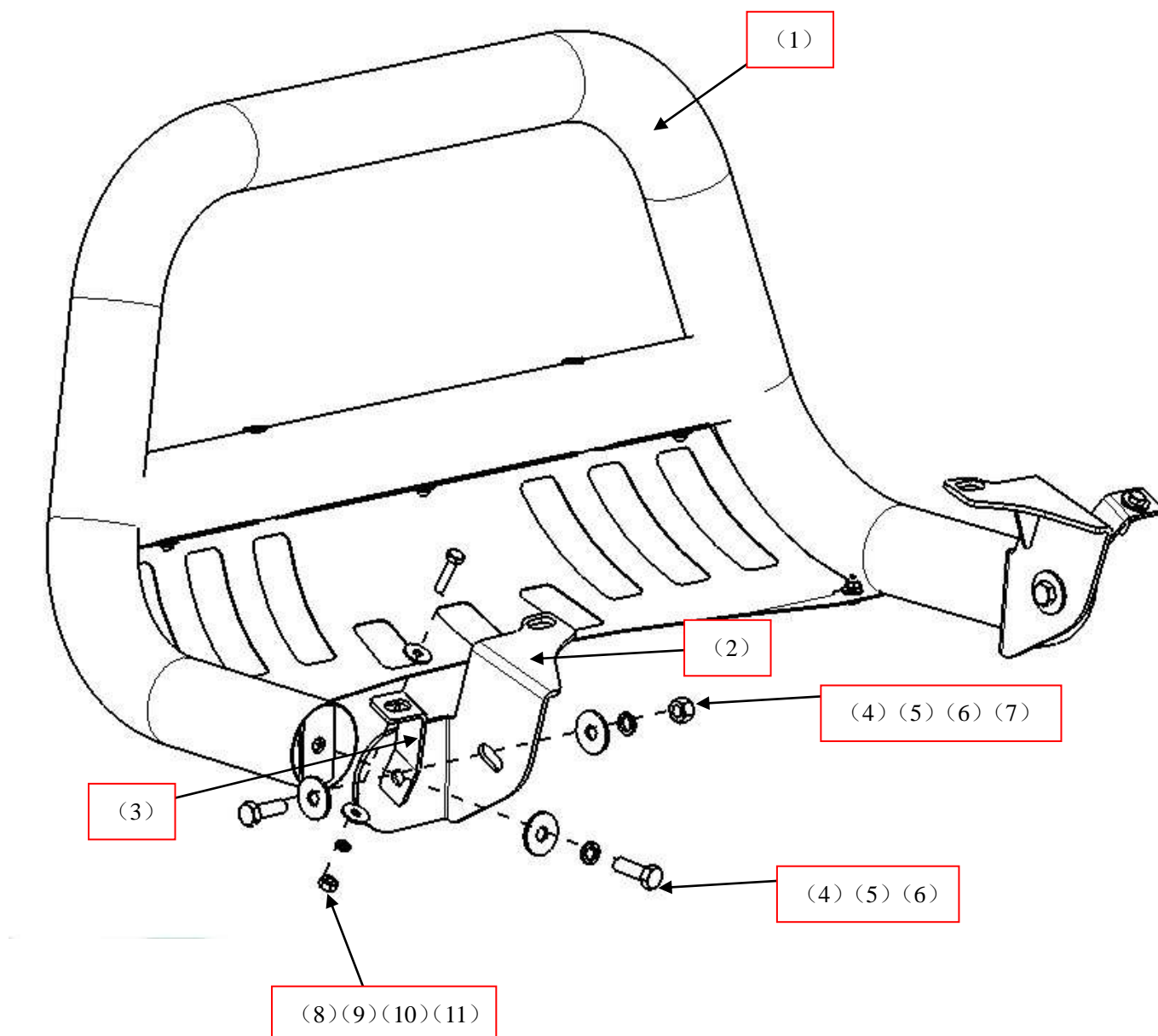
Attention:

- Please read this installation menu before installing this part. Protect your car properly in case there is any scratch might happen.
- You may need to periodically to re-tighten all hardware for safety use after installation.
- Installation pictures are only for your reference, there might be some differences between pictures and real parts but no effect for your fitting.

PART LIST

No.	NAME	QTY	REMARK	No.	NAME	QTY	REMARK
(1)	Bull Bar	1		(7)	Hexagon Nut	2	M12
(2)	Mounting Bracket	2		(8)	Hexagon Head Bolt	2	M8*30
(3)	Fitting Kit	2		(9)	Extra Large Washer	4	φ8*30*2.0
(4)	Hexagon Head Bolt	4	M12*35	(10)	Spring Washer	2	φ8
(5)	Spring Washer	4	φ12	(11)	Hexagon Nut	2	M8
(6)	Extra Large Washer	6	φ12*35*3.0				

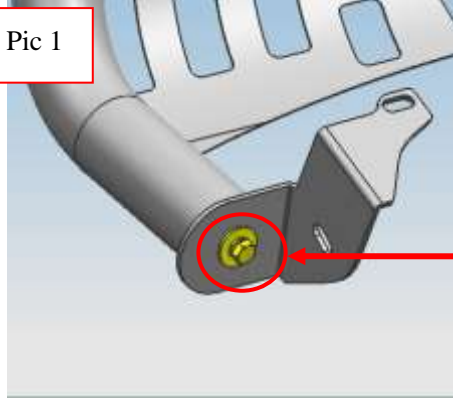
INSTALLATION PICTURE



INSTALLATION PROCEDURES

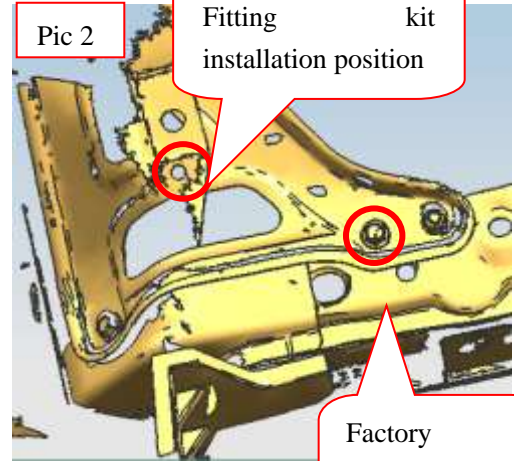
Step 1: Refer to the Part List to check if all hardware are included.

Step 2: Install the mounting brackets on the bull bar as following picture.



Pic 1

Hexagon head bolt
M12*35, spring washer
 $\phi 12$, and extra large
washer $\phi 12*35*3.0$

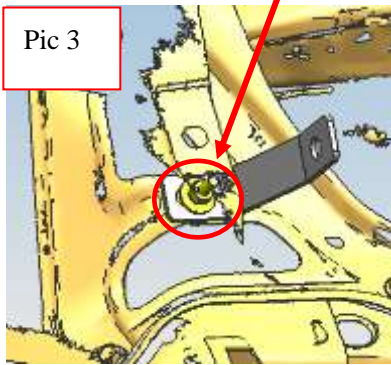


Pic 2

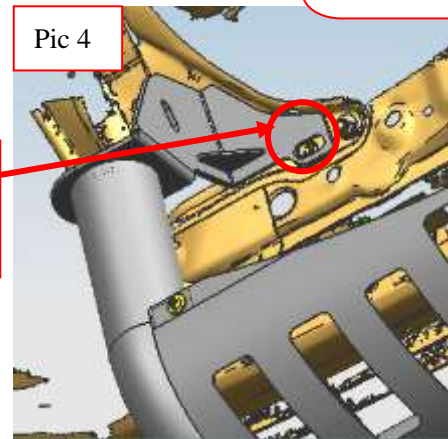
Fitting kit
installation position

Factory
hardware to fix
the bracket.

Step 3: Refer to Pic 3 to install the fitting kit.



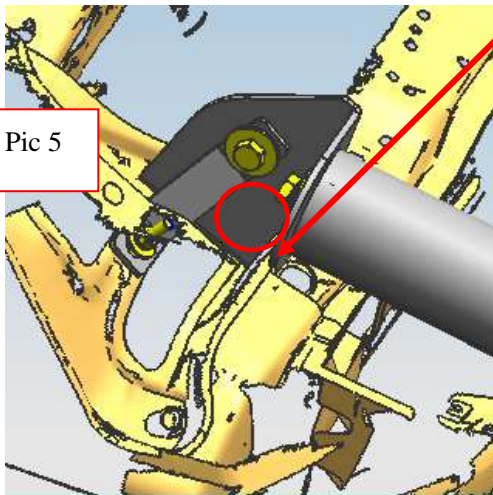
Pic 3



Pic 4

Factory
hardware to fix
the bracket.

Step 4: Refer to Pic 4 to install the bull bar with factory hardware.

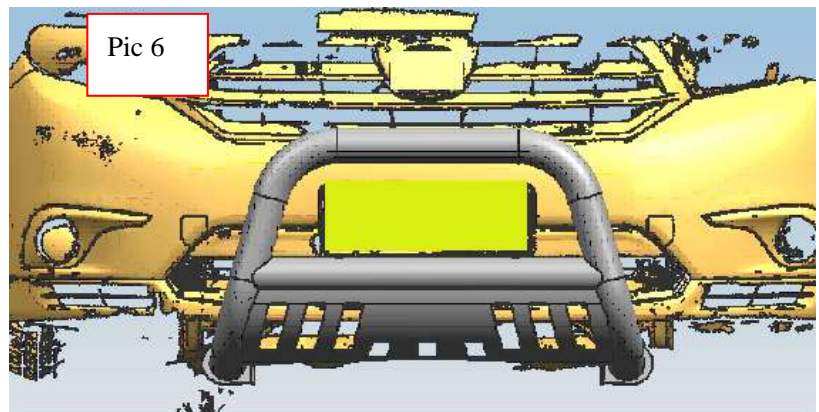


Pic 5

Step 5: Refer to Pic 5 to install the mounting bracket and fitting kit.

Step 6: Adjust the mounting bracket and fitting kit to the proper position according to the position of the bull bar.

Step 7: Check if all hardware are installed and then fasten all.



Pic 6

Disclaimer: Caused due to improper installation initiates some related problem and losses, are beyond our company's quality assurance.

