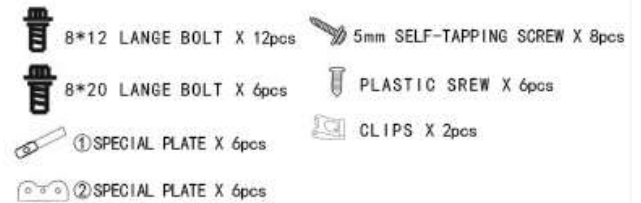
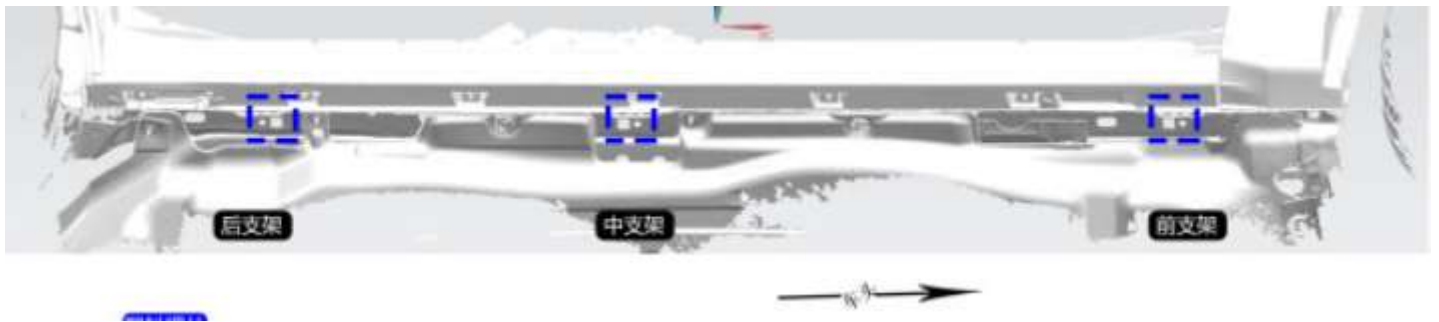


Attention

- Please read this installation menu before installing this part. Protect your car properly in case there is any scratch might happen.
- You may need to periodically to re-tighten all hardware for safety use after installation.
- Installation pictures are only for your reference, there might be some differences between pictures and real parts but no affection for your fitting.



Step 1: Find the position for the three pairs of mounting brackets as shown below

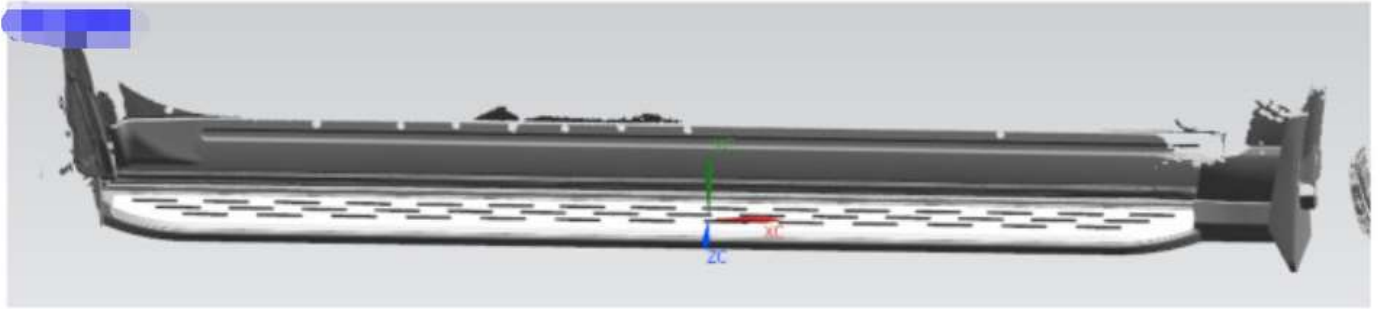
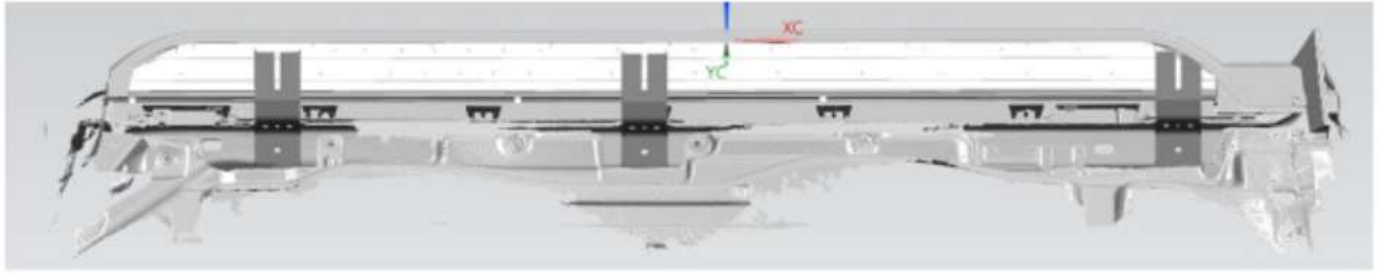


Step 2. : Insert the ① special plate into the square hole, align the screw with the round hole, fix the positioning hole with the plastic screw, and fix the ② special plate to prevent it from falling off. The front the mounting bracket is fixed with M8*12 flange bolts, and the rear end is fixed with M8*20 flange bolts.

Step 3. :Install the Running boards and the mud flap, and insert the clip to the hole below the front end of the running board. The running board is installed to the car body, the bottom is fixed with chute screws, and the mud flap is fixed with self-tapping screws.



Step 4: Completion



Disclaimer: Caused due to improper installation initiates some related problem and losses, are beyond our company's quality assurance.