



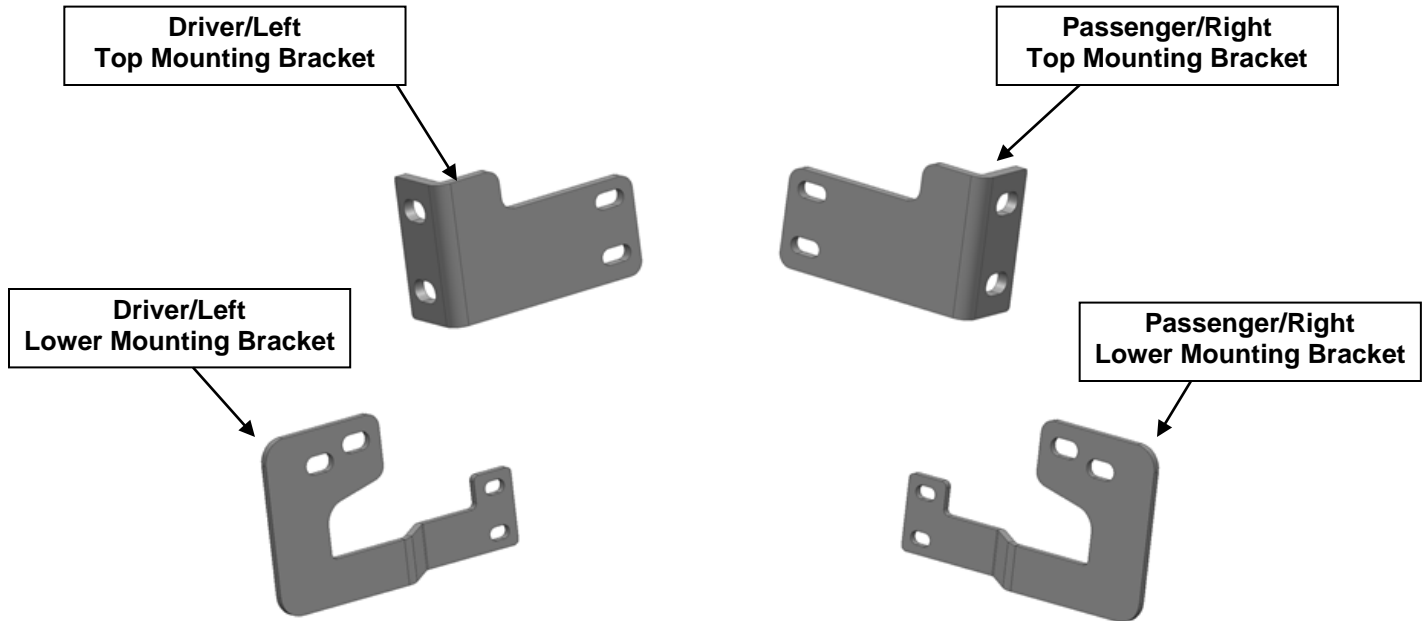
**TEL: 1-866-XANATOS**

## **INSTALLATION INSTRUCTIONS**

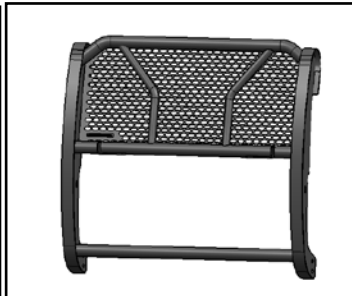
**MODULAR RUGGED GRILLE GUARD FOR  
11-16 FORD F250/350/450/550 SUPERDUTY  
PART# RU-FOF211-B**

**PARTS LIST:**

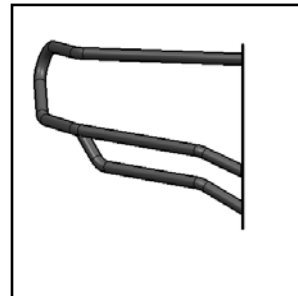
1	Main Body	8	10m x 35mm Hex Bolts
1	Driver/Left Brush Guard	16	10mm x 27mm OD x 3mm Flat Washers
1	Passenger/Right Brush Guard	8	10mm Nylon Lock Nuts
2	LED lamp Bracket	18	8mm x 24mm OD x 2mm Flat Washers
1	Driver/Left Top Mounting Bracket	10	8mm x 25mm Button Head Allen Screws
1	Passenger/Right Top Mounting Bracket	8	8mm Nylon Lock Nuts
1	Driver/Left Lower Mounting Bracket	1	Allen Wrench S=5
1	Passenger/Right Lower Mounting Bracket		



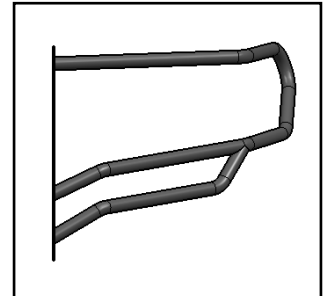
(2)LED lamp Bracket



Main Body  
For example only



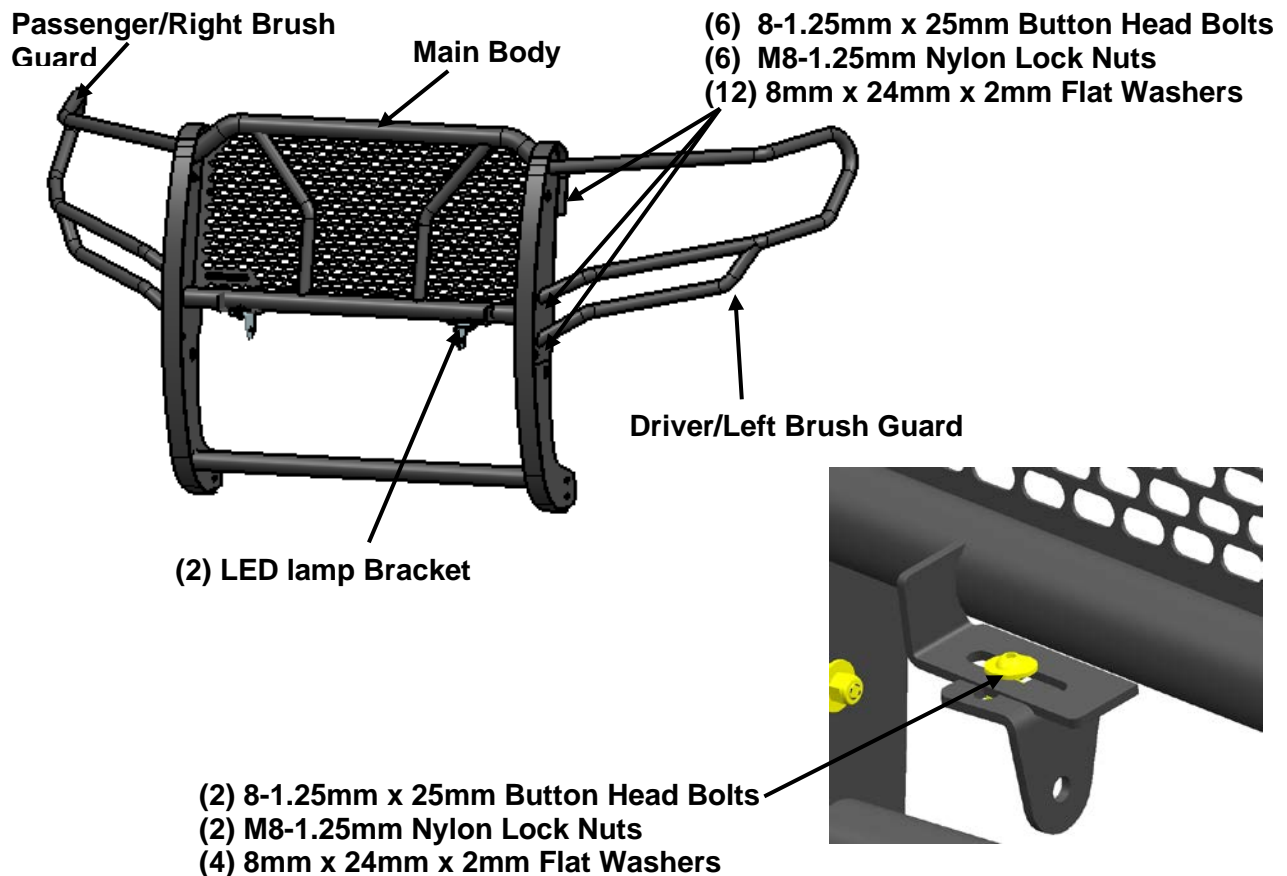
Passenger/Right  
Brush Guard  
For example only



Driver/Left  
Brush Guard  
For example only

**Please Noted:**

1. Before you install the Grille Guard on the vehicle, please install the Driver/Left Brush Guard and Passenger/Right Brush Guard on the main body first.
2. Before you install the LED Lamp on the main body please install the LED Lamp Bracket first.
3. If you are not going to install a LED Lamp, the LED Lamp Bracket installation is unnecessary. For main body installation follow the instruction as bellow.



**PROCEDURE:**

**REMOVE CONTENTS FROM BOX. VERIFY ALL PARTS ARE PRESENT. READ INSTRUCTIONS CAREFULLY BEFORE STARTING INSTALLATION. ASSISTANCE IS HIGHLY RECOMMENDED TO AVOID POSSIBLE INJURY OR DAMAGE TO THE VEHICLE. CUTTING IS REQUIRED.**

1. Before beginning installation, measure the gap between the headlight assembly and the bumper cover on both sides of the vehicle, **(Figure 1)**. Also note the gap between the grille shell and the bumper cover. Record these measurements as the installation requires removal of the bumper bolts and you will need these measurements to properly readjust the bumper height to its original position.
2. Remove the license plate and bracket. Remove the plastic air dam from the bottom of the bumper and place it on a clean, stable work surface, **(Figure 2 & 3)**. Note the location and type of all factory hardware for reinstallation. **NOTE:** To release the 2-piece plastic clips, pry the center pin up with a small flat blade screwdriver.

3. **IMPORTANT!** Place blocks or jack stands under the front bumper to support it during installation. **WARNING!** Do not remove the passenger and/or driver side bumper bolts until the bumper is properly supported or it may fall during installation of Extreme Grille Guard.
4. Attach the Top Mounting Brackets to the Grille Guard with (2) 10mm x 35mm Hex Bolts, (4) 10mm x 37mm OD x 3mm Flat Washers and (2) 10mm Nylon Lock Nuts **(Figure 4)**.
5. Once the bumper has been safely supported, remove the (4) factory bumper bolts, **(Figure 5)**. **NOTE:** Bumper bolts are held in place by thin metal retaining clips. Discard the clips and remove the bolts. With assistance, position the Grille Guard up to the mounting location on the front bumper. Line up the (4) holes in the Grille Guard mounting surfaces with the factory bumper mount holes. Make sure there is a minimum of 1/8" clearance between the top and bottom of the mounting tabs on the Grille Guard and the opening in the bumper. Secure the Grille Guard to the vehicle using the factory bolts and double nut plates, **(Figure 5)**. Check bumper alignment and temporarily tighten the (4) bolts at this time. **NOTE:** It may be necessary to loosen and readjust the bumper once the Grille Guard has been installed.
6. Attach the Lower Mounting Brackets to the Grille Guard with (2) 10mm x 35mm Hex Bolts, (4) 10mm x 37mm OD x 3mm Flat Washers and (2) 10mm Nylon Lock Nuts **(Figure 6)**.
7. Next, from under the driver side of the bumper, remove the (2) factory hex nuts on the outside of the frame channel, **(Figure 7)**. **NOTE:** Do not allow the double bolt plate to fall into the frame channel. Attach the Grille Guard to the factory double bolt plate and secure with the (2) factory hex nuts, **(Figure 7)**. Do not tighten hardware at this time. Repeat this step for passenger side Lower Mounting Bracket installation. Snug but do not tighten hardware at this time.
8. Measure from the bottom of the bumper to the mounting tabs and transfer these measurements onto the back of the air dam, **(Figure 8)**. Place the air dam back up to the bottom of the bumper to verify location. Check all measurements on the vehicle. Once absolutely satisfied, use a hacksaw blade or utility knife to carefully cut (2) openings in air dam, **(Figure 9)**. **IMPORTANT:** Do not cut through the top or bottom edge of the air dam.
9. Remove the Grille Guard. Reinstall the air dam with the factory hardware. Hold the Grille Guard up in position to check for clearance around the mounting tabs and trim the air dam as necessary. Reinstall the Grille Guard as described in **Steps 4 - 6**. Reinstall the license plate and bracket.
10. Level and adjust Grille Guard and bumper, (if necessary), and tighten all hardware at this time.
11. Do periodic inspections to the installation to make sure that all hardware is secure and tight.

**To protect your investment**, wax this product after installing. Regular waxing is recommended to add a protective layer over the finish. Do not use any type of polish or wax that may contain abrasives that could damage the finish.

**For stainless steel:** Aluminum polish may be used to polish small scratches and scuffs on the finish. Mild soap may be used also to clean the Grille Guard.

**For gloss black finishes:** Mild soap may be used to clean the Grille Guard.

## Driver Side Installation Pictured

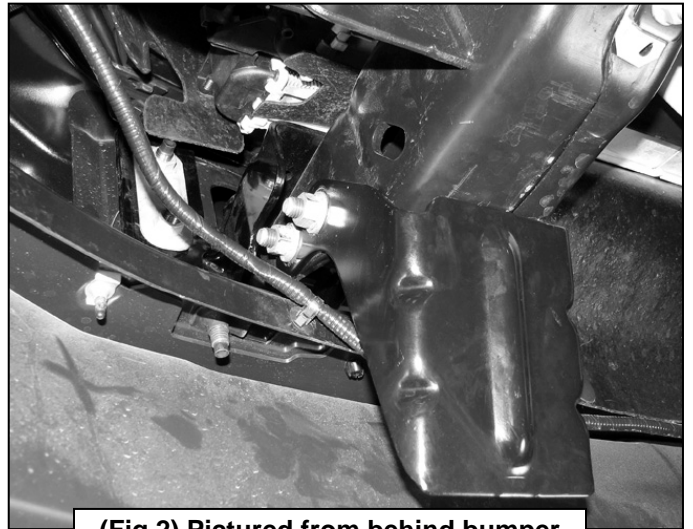


Fig 1

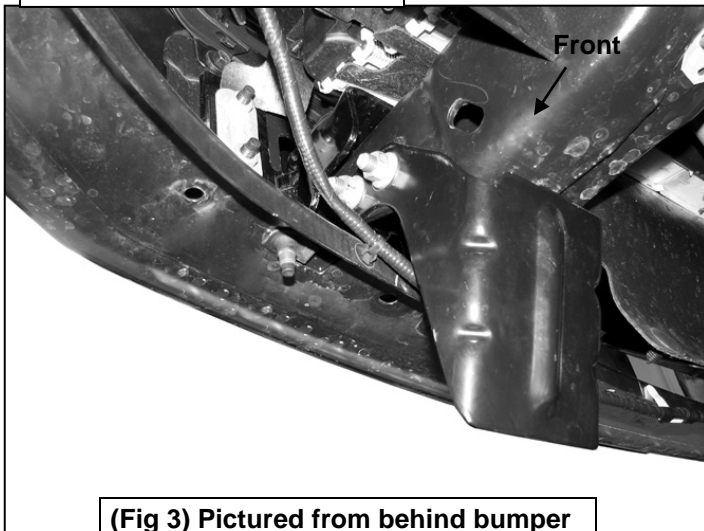
**WARNING!** Do not remove bumper bolts unless the bumper is properly supported on blocks or stands or the bumper may fall.

Remove (2) factory hex nuts

Before removing bumper bolts, measure gaps above bumper on driver and passenger side to relocate bumper



(Fig 2) Pictured from behind bumper



(Fig 3) Pictured from behind bumper

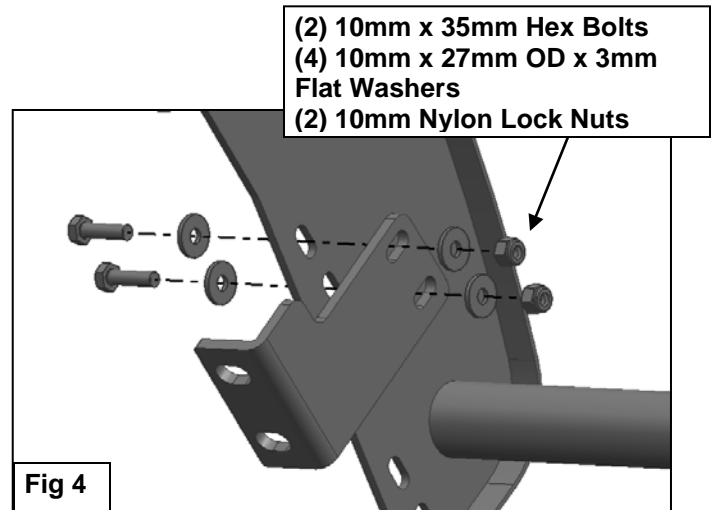


Fig 4

(2) 10mm x 35mm Hex Bolts  
(4) 10mm x 27mm OD x 3mm Flat Washers  
(2) 10mm Nylon Lock Nuts

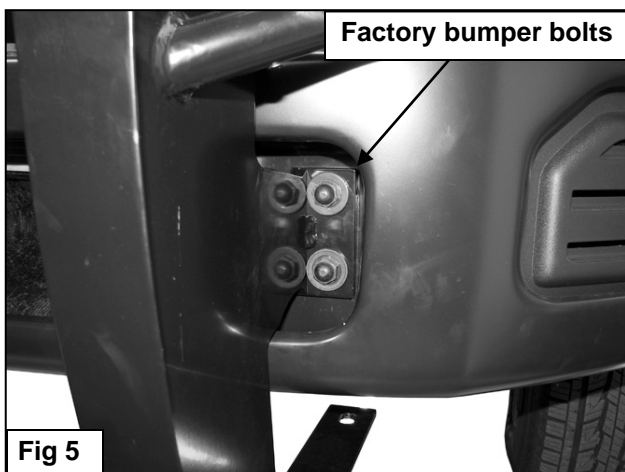


Fig 5

Factory bumper bolts

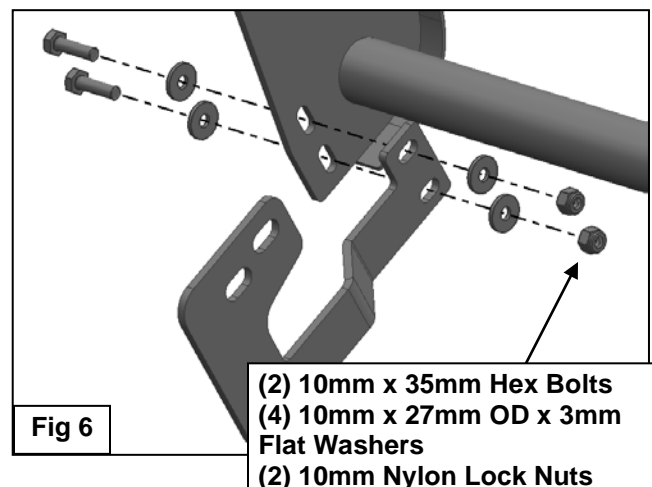


Fig 6

(2) 10mm x 35mm Hex Bolts  
(4) 10mm x 27mm OD x 3mm Flat Washers  
(2) 10mm Nylon Lock Nuts

## Driver Side Installation Pictured

