



INSTALLATION INSTRUCTIONS

BLACK HORSE COMMERCIAL RUNNING BOARD KITS

Part# RUN102A, RUN102SS, RUN109A, RUN109SS, RUN120A
RUN120SS, RUN135A, RUN135SS

INTRODUCTION

These boards are designed in the form of a complete kit capable of mounting to Vans for owners needing 6.5" Step Widths, Wheel-to-Wheel on both sides of the vehicle with the capability of carrying up to 300 lbs. Some simple fabrication is required, measurements taken, running boards cut to length, mounting brackets cut to size, and holes drilled into the underside of the vehicle.

Check as to whether wheels need to be removed to gain access to the wheel wells ,and ensure that you have jacks available, and observe all safety protocols.

COMPONENTS

This is a comprehensive package of components , no additional hardware should be required. Please check that all components are present before starting the installation.

Note: The mounting hardware supplied is designed to ensure that there is enough hardware to install all the supplied brackets. It may be that after installation some hardware is surplus to requirements.



2 Extruded Aluminum Running Boards



4 Moon Cut Mud Guards

HARDWARE INCLUDED



M10 Phillips Pan
Head Screws
X 8



M10 Flat
Washers
X 8



M8 x 20 Hex
Head bolts
X 24



M8 locking
Flange Nuts
X 24



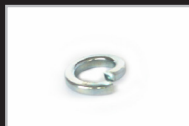
M6 x 20 Hex Head
Sheet Metal Screws
X 12



M6 x 16
Hex Head Bolts
X 12



M6 Flat
Washers
X 12



12 M6 Locking
Washers
X 12



M8 x 30
Hex Head bolts
x 6



24" Support
Arms
X6



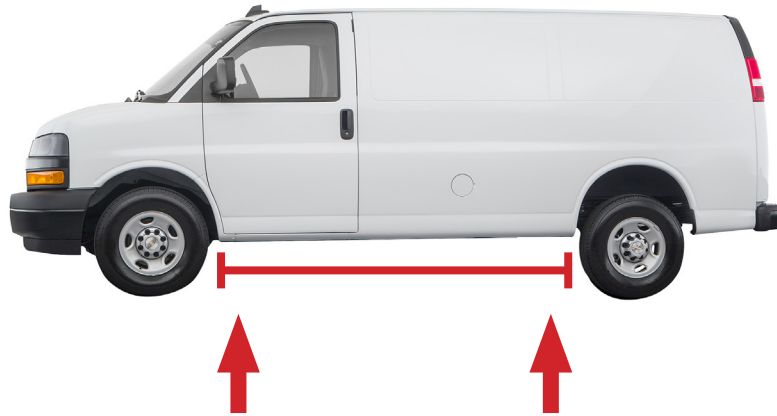
9" Support
Brackets
X 6



3" Adapter
Brackets
X 12



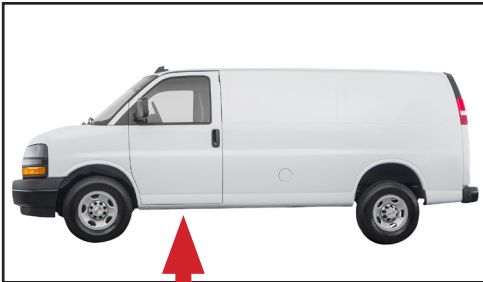
NOTES ON INSTALLATION



The step boards need to be cut to the exact size, to mount between the wheel arches with the mudguards installed.

SUPPORT ARM BRACKET LOCATIONS

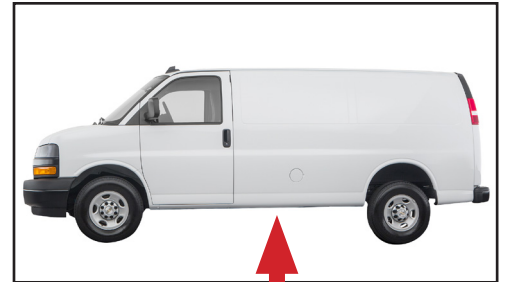
We recommend mounting 3 support arms on each side



Front Arms
Center of front door



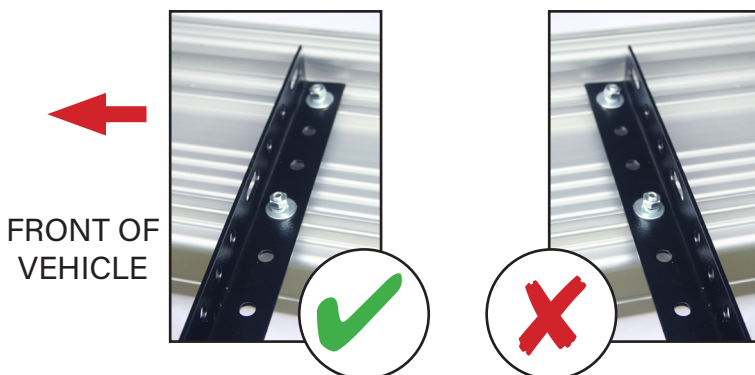
Rear Arms
As close to the rear wheel arch as possible.



Center Arms

SUPPORT ARM SET-UP

Pay close attention to the initial set up, as re-configuring a wrong set up is a time consuming process.



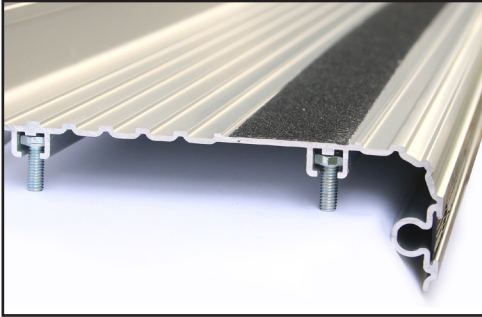
NOTE: Do not mount Support Arms to Running Boards using the slotted holes.



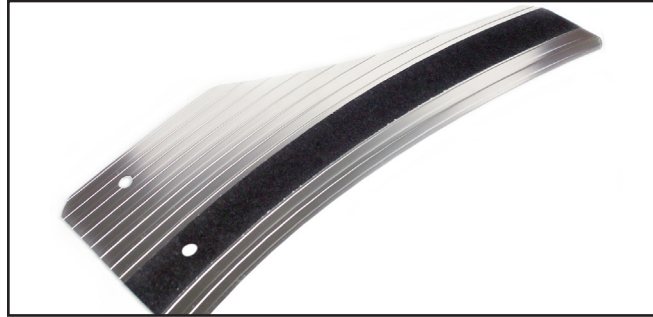
RUNNING BOARD ASSEMBLY

- Cut running boards to length.
- The mud guards mount inside the wheel wells. Bend the end guards to snugly fit the profile of the wheel wells.

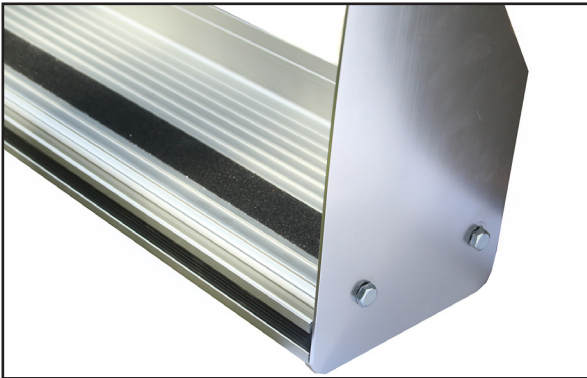
INSTALLATION INSTRUCTIONS



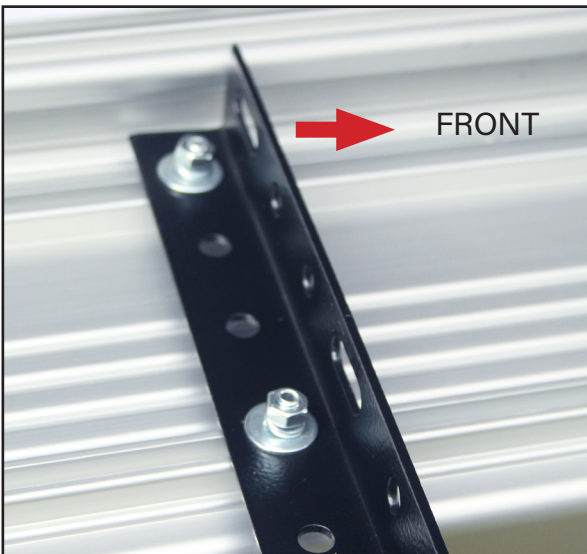
Insert 3 each of the M6x16 Hex Head Bolts into the 2 slides under the running boards. (12 in total)



Bend the Mudguards to match the radius of the wheel arches.



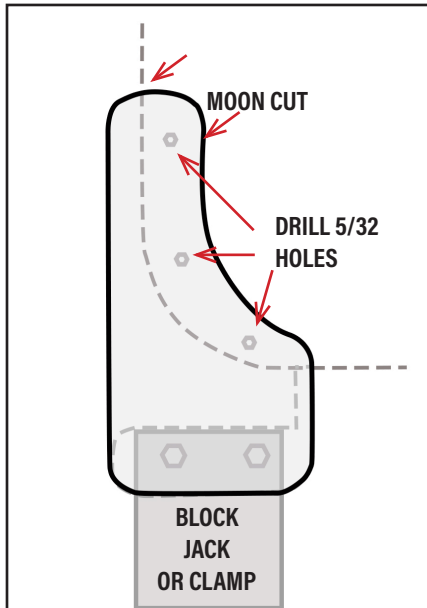
Attach the Front and Rear Mudguards to the Running Boards using 2 M10 screws with M10 Washers to drill through the slide ends on the underside of the boards.



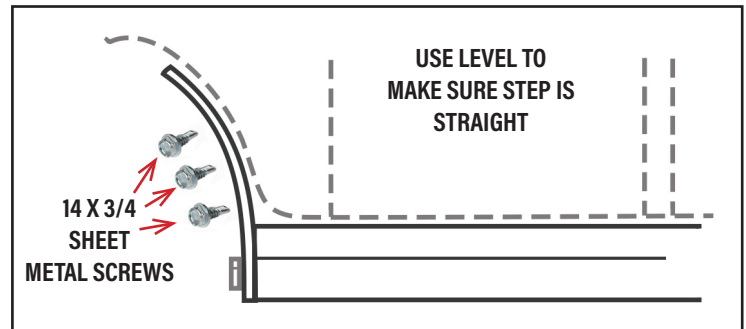
Mount the Support Arms to the boards using the side of the angle with the drilled holes. Do not mount the support arms using slotted holes. Do not tighten down, slide the arms approximately into position, one at the front, one at the back, and one in the center.



INSTALLATION INSTRUCTIONS



- Manoeuvre the boards into position under the vehicle using blocks, clamps or jacks.
- Hold the Boards in place to fabricate the mounting hardware by attaching the Mudguards to the inner wheel arches, using up to 3 of the M6 sheet metal screw per Mudguard. Mark the most suitable drill locations of the Mudguards, then first drill pilot holes before using the Sheet Metal Screws. These will not bear weight, do not stand on the Running Boards at this stage.



- Locate suitable mounting points on the underside of the vehicle, these mounting points should be steel, not plastic and be able to bear load. Each Support Arm should be attached to a minimum of two mounting points.
- Please review the following illustrations for examples of different methods of mounting.

SOME TYPICAL SCHEMATICS

