

# **INSTALLATION INSTRUCTION**

**Running Boards Brackets  
14-16 Lexus NX Premium  
PART # BR-LXNX**



Attention:

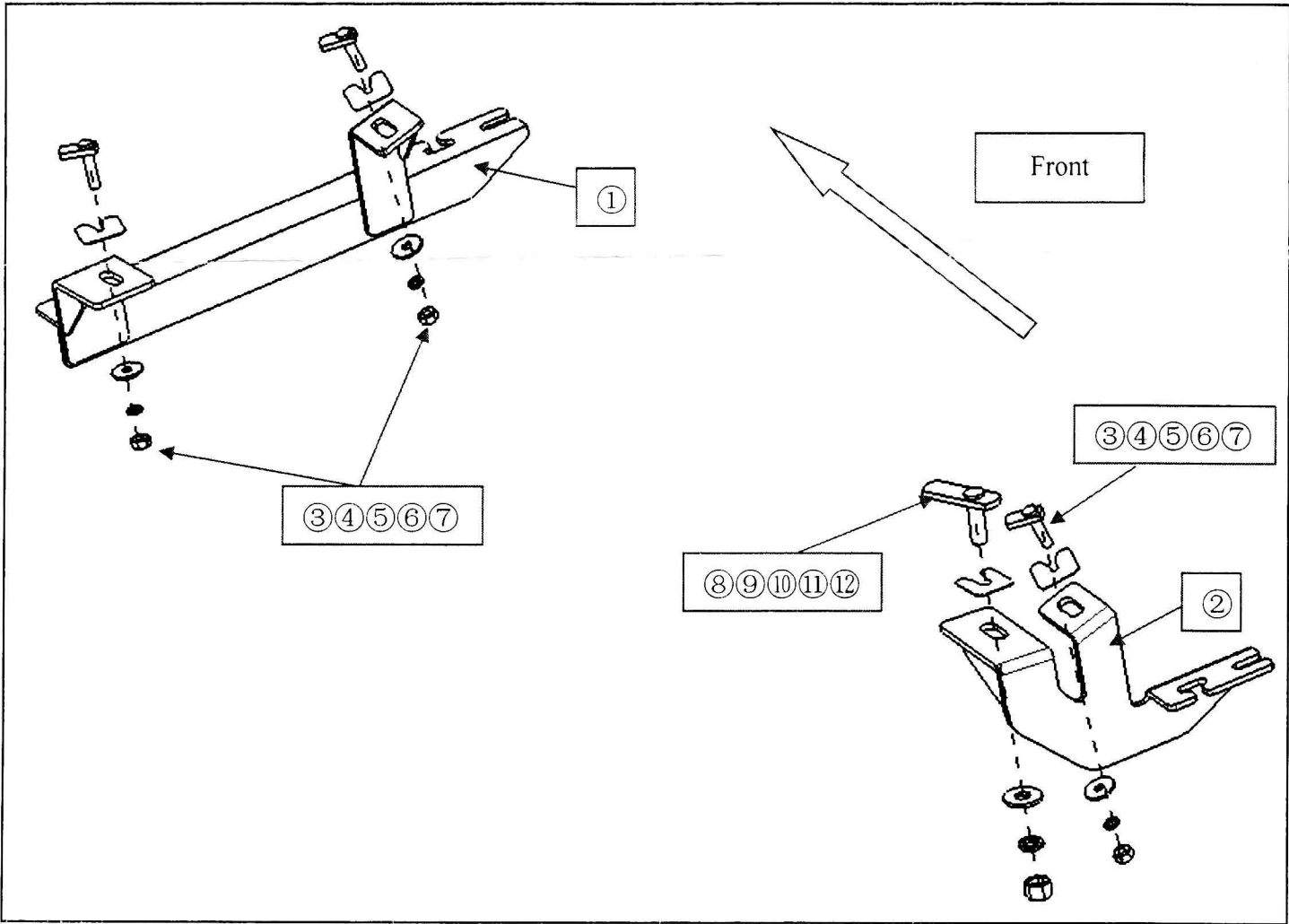
- Please read this installation menu before installing this part. Protect your car properly in case there is any scratch might happen.
- You may need to periodically to re-tighten all hardware for safety use after installation.
- Installation pictures are only for your reference, there might be some differences between pictures and real parts but no effect for your fitting.

PART LIST

NO.	NAME	QTY	REMARK	NO.	NAME	QTY	REMARK
①	Front Bracket	2		⑦	Hexagon Nut	6	M8
②	Rear Bracket	2		⑧	T Bolt 2	2	67 *M12*40
③	T Bolt 1	6	30*M8*40	⑨	PVC Fixture	2	φ12 x 2
④	PVC Fixture	6	φ8 x 6	⑩	Large Washer	2	φ12x30x3.0
⑤	Large Washer	6	φ8x25x2.0	⑪	Spring Washer	2	φ12
⑥	Spring Washer	6	φ8	⑫	Hexagon Nut	2	M12

Note: It is the same way to install both sides.

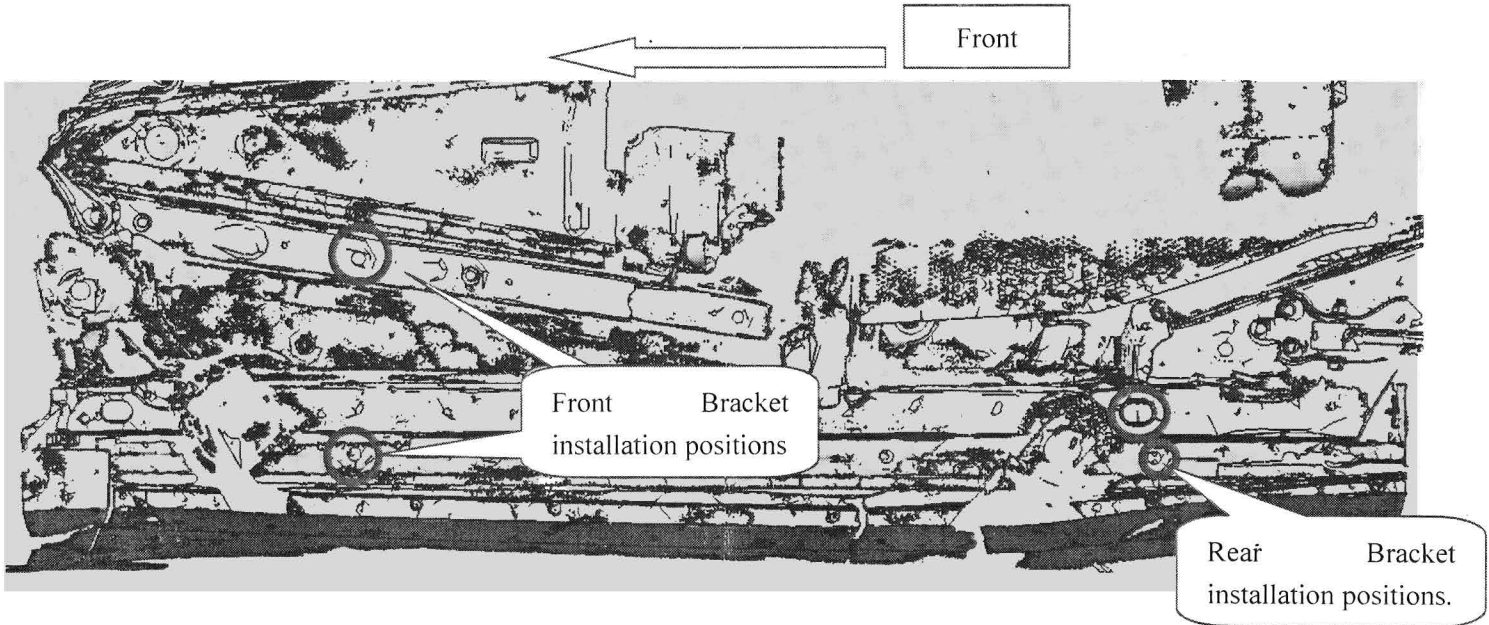
INSTALLATION PICTURE



# INSTALLATION PROCEDURES

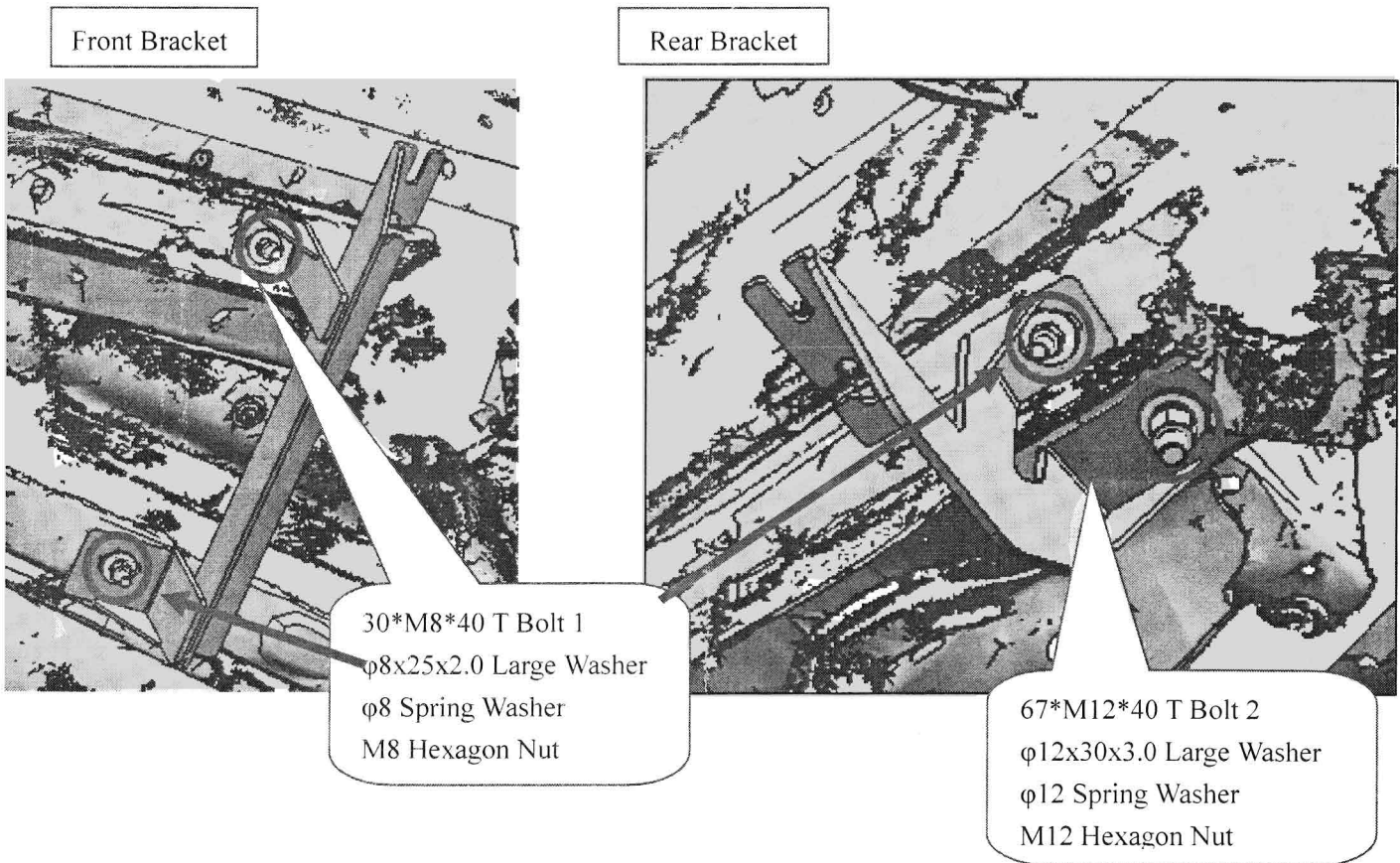
Step 1: Refer to Part List and Installation Picture to check if all hard ware are included.

Step 2: Refer to the following picture to install the front and rear brackets.



Step 3: Install the brackets on the relevant positions but do not fasten.

Step 4: Install the running board on the brackets and then adjust them to the proper positions.



Step 4: Check if all hardware are installed and then fasten all to complete the installation.

Disclaimer: Caused due to improper installation initiates some related problem and losses, are beyond our company's quality assurance.