



# **INSTALLATION INSTRUCTIONS**

**BRACKETS FOR UNIVERSAL REAR BUMPER GUARD (DOUBLE  
LAYER) FOR HONDA CRV 2017-2021(USE RB01S)**

**PART #H6**











## Before Installation

- Please read the instruction completely for easy installation, which will also help you to avoid scratches or other potential damages to your appealing car.
- The information shown here is for reference only and may differ from the product that you receive, however the goods are fitted in the same way.

## Care and Cleaning

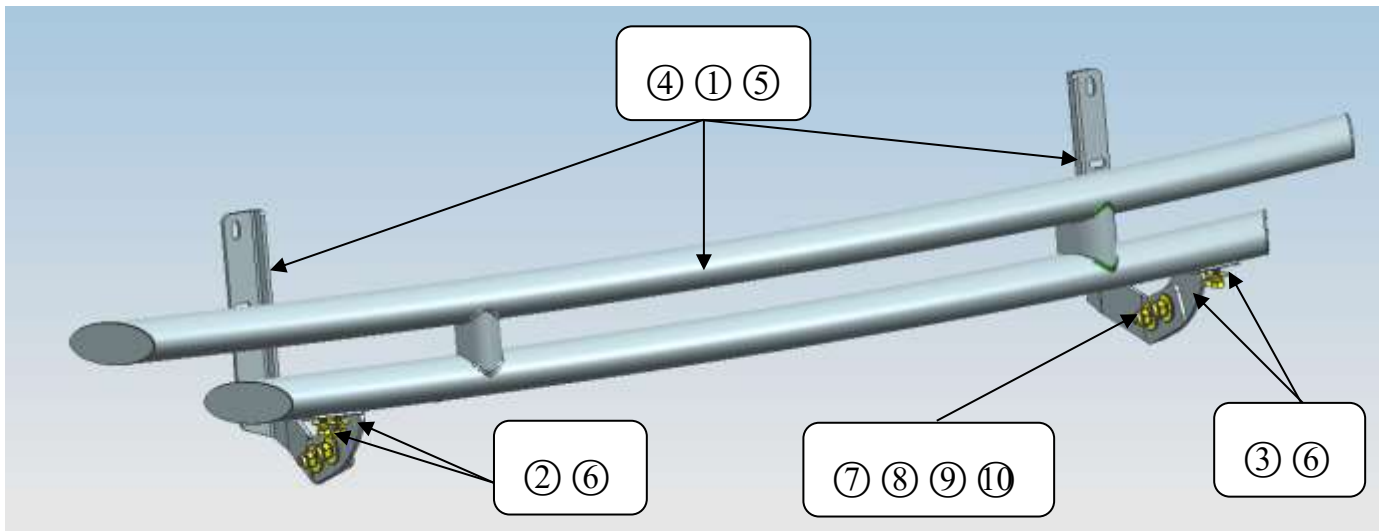
- Mild soap may be used also to clean the Product.
- Please periodically check and retighten all the hardware and clean the investment for a refresh look.

## Parts list

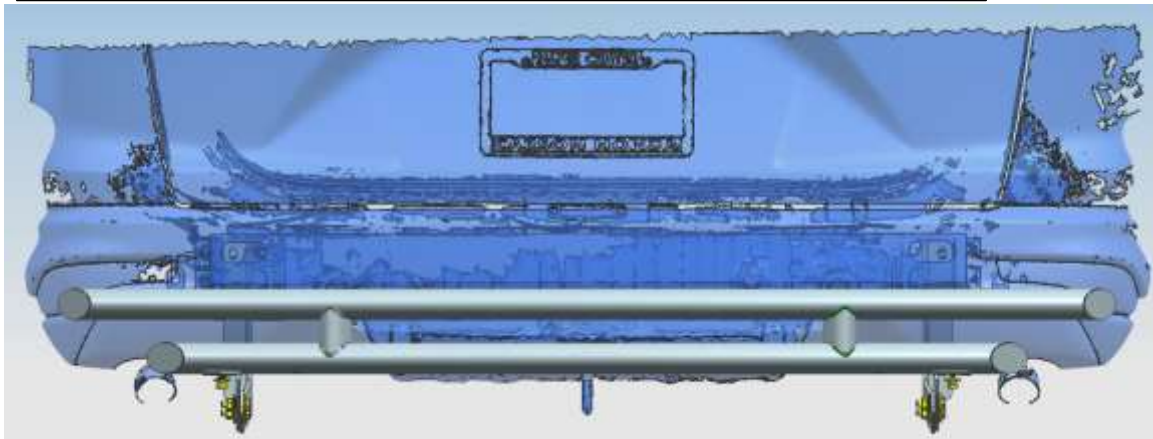
NO.	QTY	PICTURE	NO.	QTY	PICTURE
①	1	 Rear bar	②	1	 Bracket-A-L
③	1	 Bracket-A-R	④	1	 Bracket-B-L
⑤	1	 Bracket-B-R	⑥	4	 Assembly bolt M8*25
⑦	4	 Hex nut M10	⑧	4	 Lock washer D10
⑨	8	 Flat washer D10	⑩	4	 Hex bolt M10*35

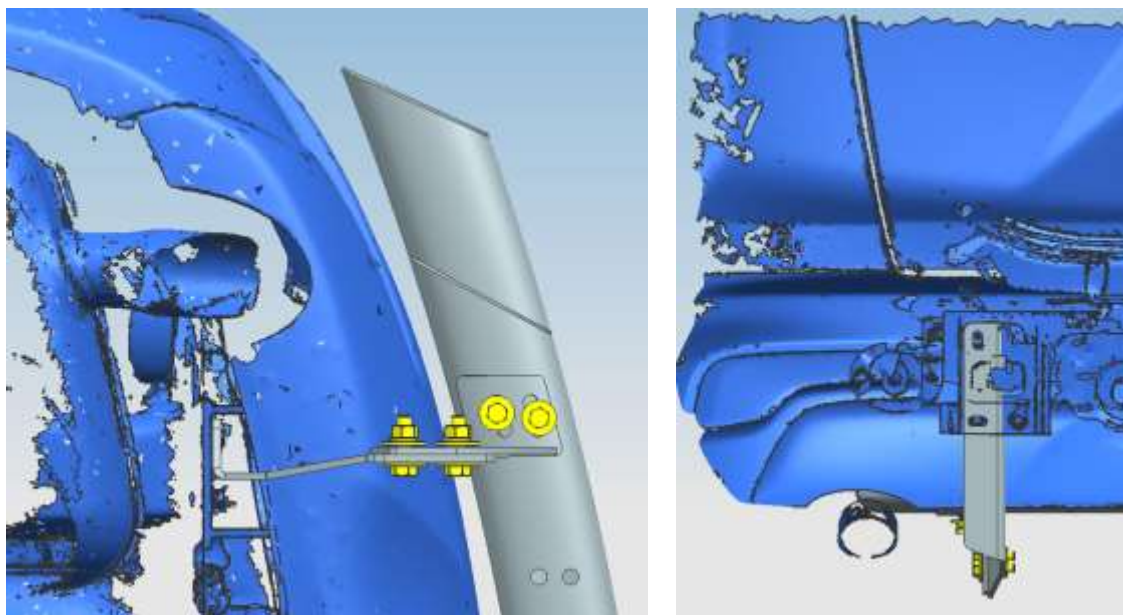
Installation Pics

**FIG.1**



**FIG.2** The installation of bracket, the same ways for both sides.





## ● INSTALLATION PROCEDURES:

**Step 1:** Check all the contents are available in accordance with the above list.

**Step 2:** Remove the bottom factory skid plate and using factory bolts to install Bracket-B-L&R. Do not tighten all the bolts. (**FIG.2**)

**Step 3:** Install the rear bar on Bracket-A-L &B as **FIG.1**. Do not tighten all the bolts.

**Step 4:** Test the position properly, and then tighten all the parts to make sure that the rear bar is steadily fixed

**Step 5:** Install the factory skid plate to original position.

**Step 6:** Installation is finished.

## NOTE

Any damages and losses caused by improper installation and application, goes beyond our quality warranty.

