



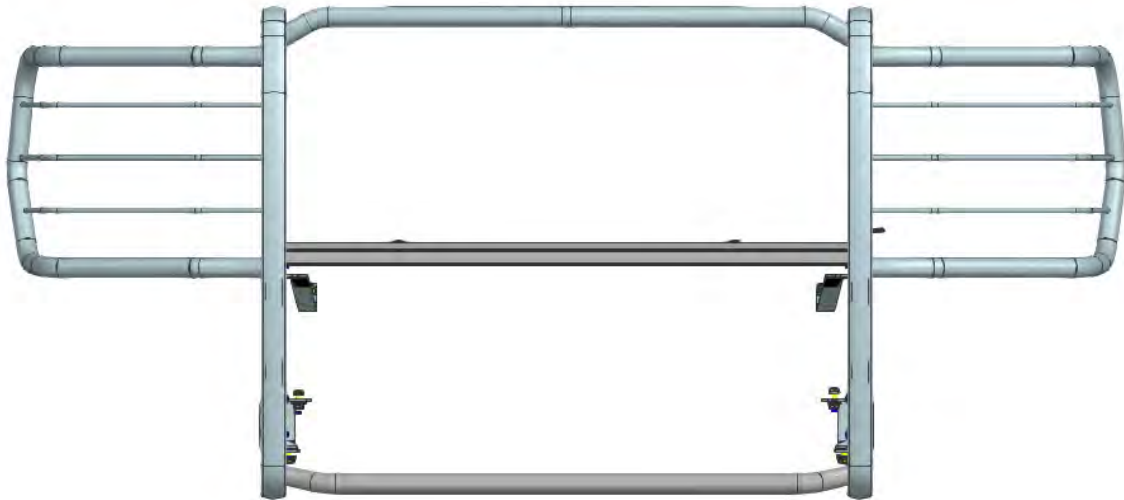
TEL: 1-866-XANATOS

INSTALLATION INSTRUCTIONS
BLACK MODULAR GRILLE GUARD FOR 15-24 FORD E350/ E450
PART # 17FO35MA
PROTECTED BY ONE OR MORE PATENT

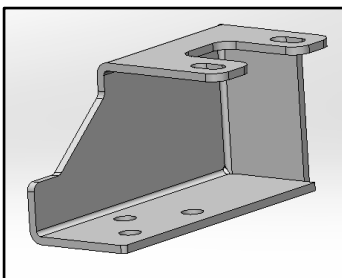
BLACK MODULAR GRILLE GUARD FOR 15-24 FORD E350/ E450

PARTS LIST:

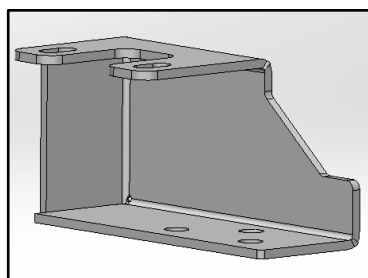
QTY	Item	QTY	Item
1	Middle Guard	8	Flat Washer D10_24_2.2
1	Left Brush Guard	10	Flat Washer D10_27_3
1	Right Brush Guard	10	Hex Bolt (full thread) M10_30
1	Driver/Left Mounting Bracket 1	4	Hex Bolt (full thread) M8_30
1	Passenger/Right Mounting Bracket 1	4	Hex Nut M10
1	Driver/Left Mounting Bracket 2	4	Nylon Lock Nut M10
1	Passenger/Right Mounting Bracket 2	10	Nylon Lock Nut M8
1	Driver/Left Support Bracket	8	Button Head Bolt M8_25
1	Passenger/Right Support Bracket	18	Flat Washer D8(8x24x2mm)
2	Adhesive Tape (112*29*δ2)	10	Lock Washer D10
2	Adhesive Tape 2 (68*54*δ2)	2	Lock Washer D8
2	T Bolt (M10x35)	1	Allen Washer S=5
4	Flat Washer D8_22_2		



DS Mounting Bracket 1



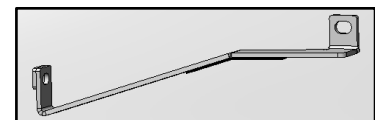
PS Mounting Bracket 1



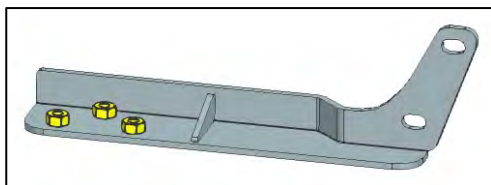
DS Support Bracket



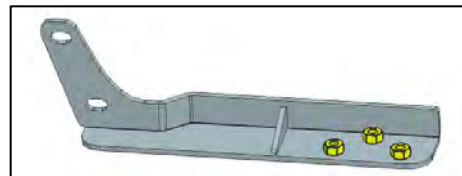
PS Support Bracket



DS Mounting Bracket 2

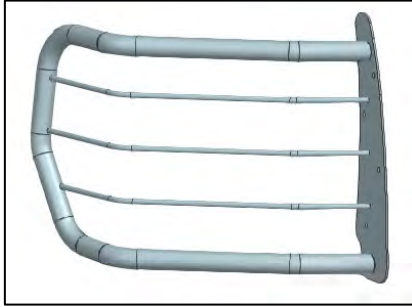


PS Mounting Bracket 2

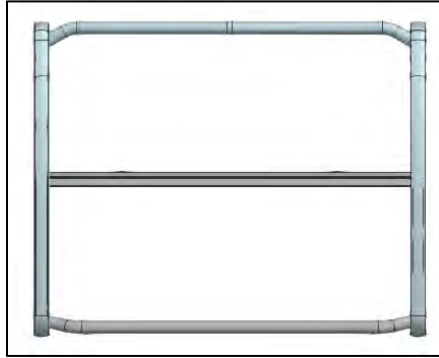


BLACK MODULAR GRILLE GUARD FOR 15-24 FORD E350/ E450

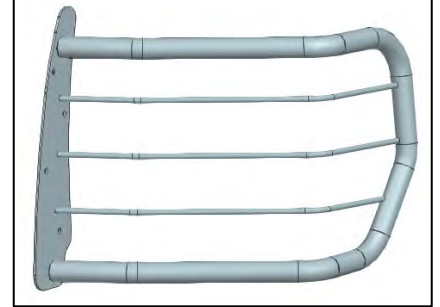
Left Brush Guard



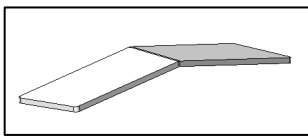
Middle Guard



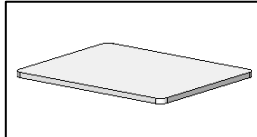
Right Brush Guard



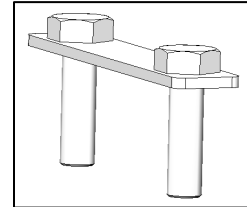
Adhesive Foam 1



Adhesive Foam 2



Double Bolt Plate



TOOLS REQUIRED



Ratchet



13mm Socket
18mm Socket



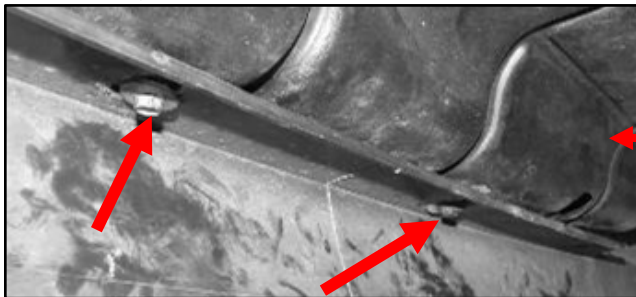
Extensions



Wrench

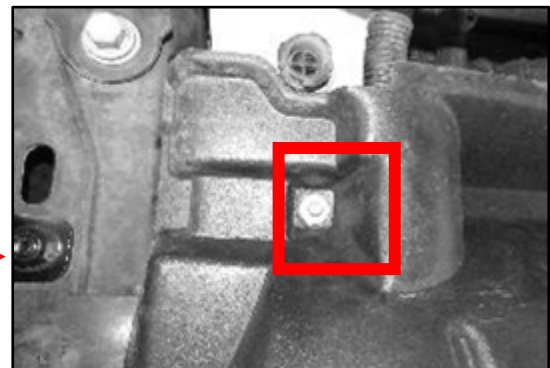
1

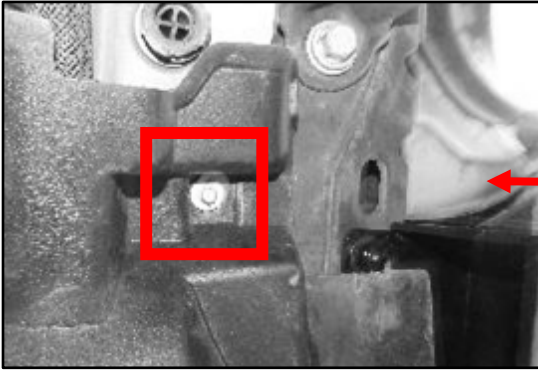
Follow (Fig 1-7) to prepare the bumper for the grille guard install.



(Fig 1) Start at the front of the vehicle underneath the front bumper & remove the skid plate

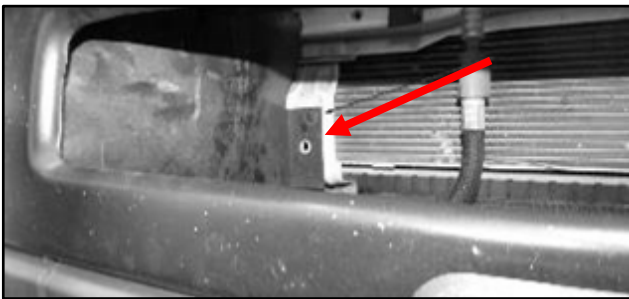
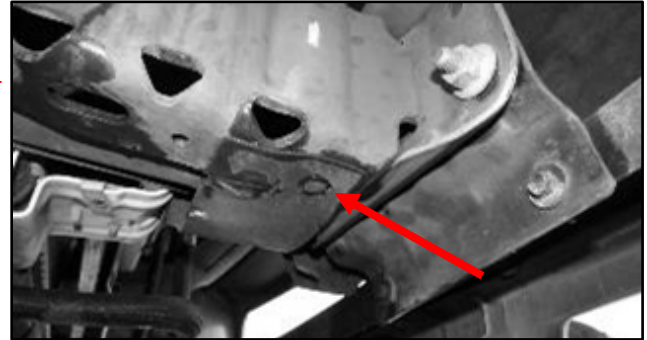
(Fig 2) Remove the skid plate by removing the DS bolt that mount the skid plate to the frame





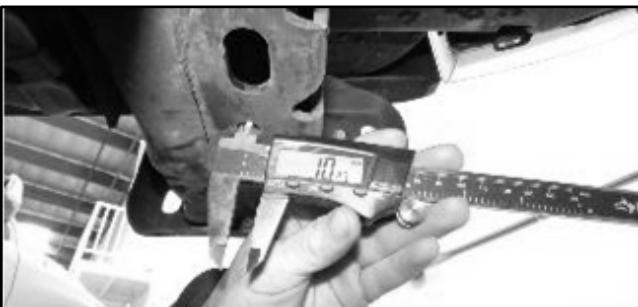
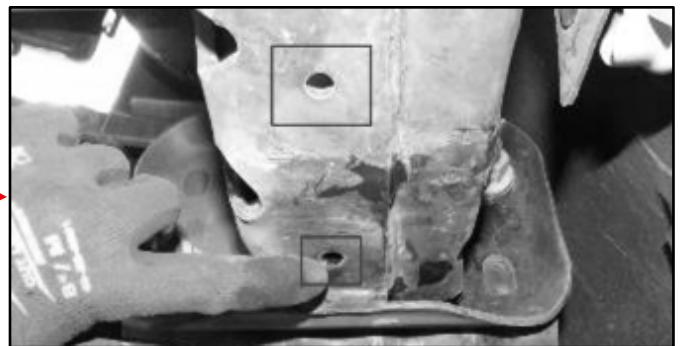
(Fig 3) Remove the skid plate by removing the PS bolt that mount the skid plate to the frame

(Fig 4) Once skid plate is removed you can now remove the plastic cover on the DS & PS by removing the following clips



(Fig 5) Remove the plastic cover behind the grille that is also being held on by a clip

(Fig 6) Drill holes to enlarge them to about 10mm diameter

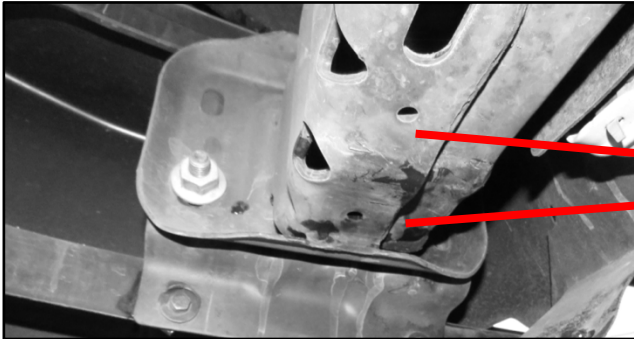
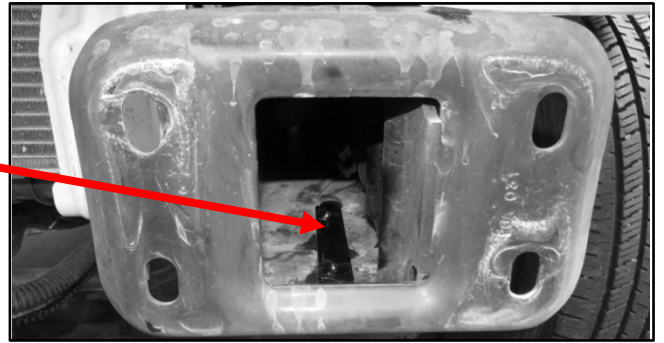


(Fig 7) Drill holes to enlarge them to about 10mm diameter

2

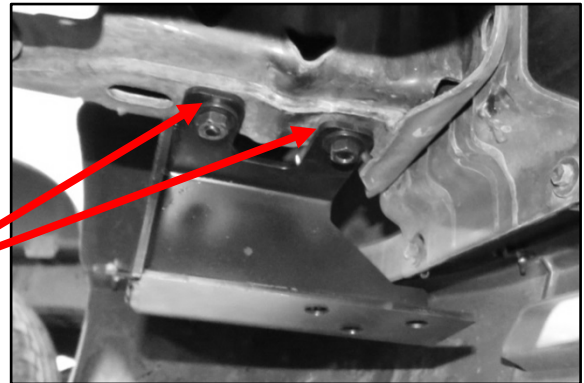
Follow (Fig 8 – 21) to install the mounting brackets and support brackets.

(Fig 8) Insert the double bolt plate inside the DS & PS frame horn tube

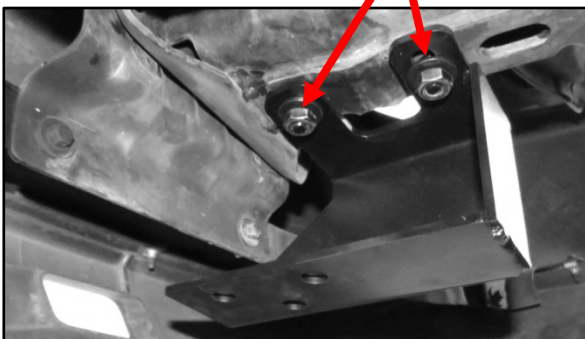


(Fig 9) The double bolt plate could be installed by positioning it through the gap of the bumper and frame horn plate

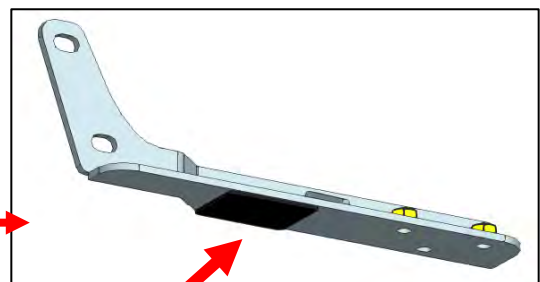
(Fig 10) Install the DS mounting bracket 1 using the double bolt plate



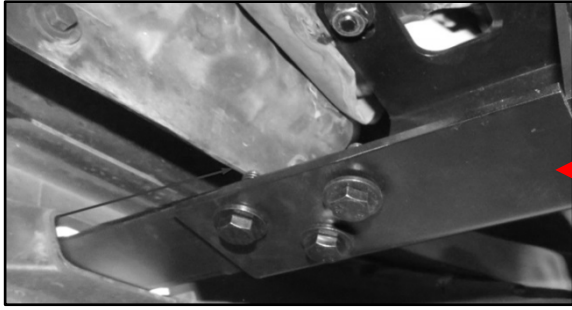
- (2) 10mm Flat Washers
- (2) 10mm Lock Washers
- (2) 10mm Hex Nuts



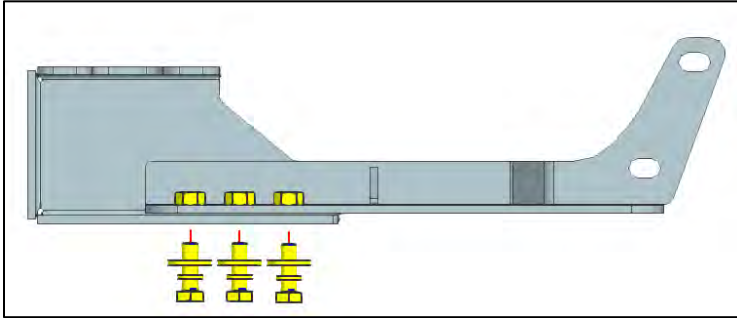
(Fig 11) Install the PS mounting bracket 1 using the double bolt plate



(Fig 12) Add the adhesive foam 2 to the mounting bracket 2

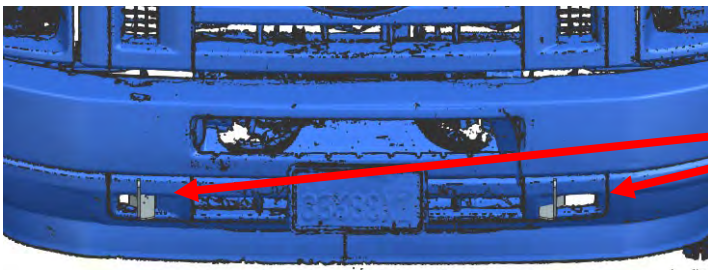


(Fig 13) Attach mounting bracket 2 to mounting bracket 1



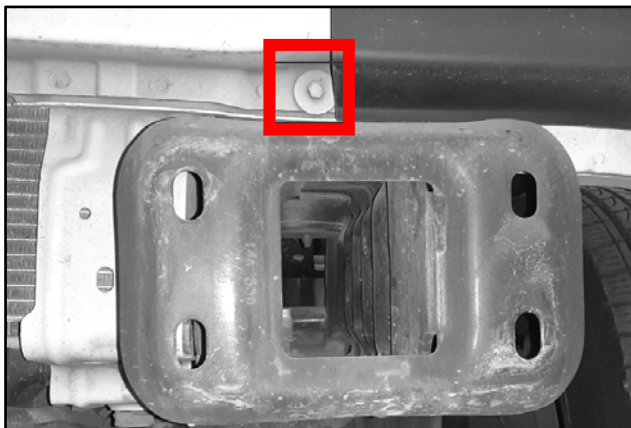
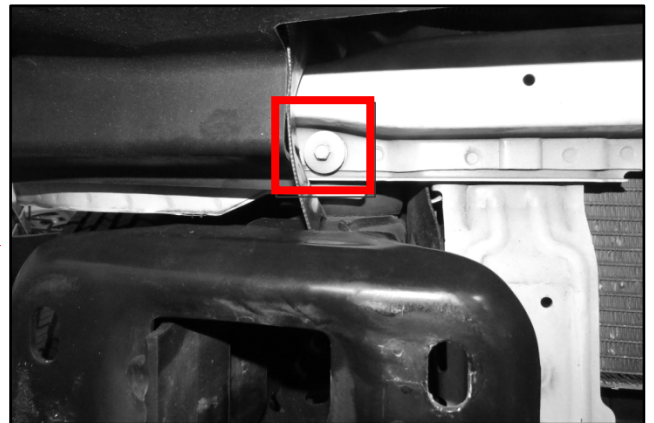
(Fig 14) Attach mounting bracket 2 to mounting bracket 1

- (3) 10mm Hex Bolts
- (3) 10mm Lock Washers
- (3) 10mm Flat Washers



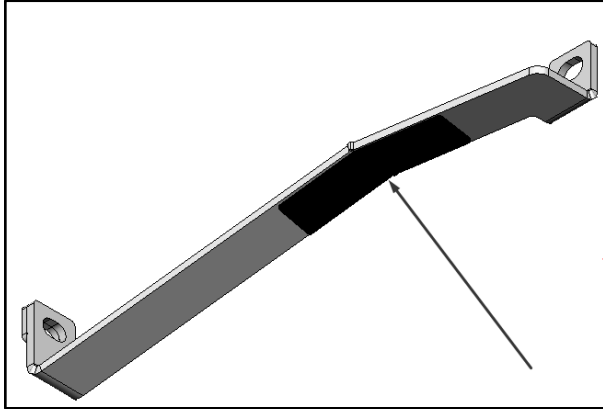
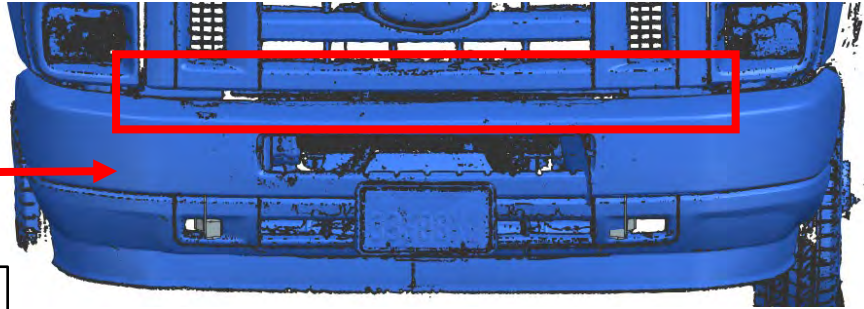
(Fig 15) DS & PS mounting bracket 1 & 2 mounted

(Fig 16) DS support bracket mount location



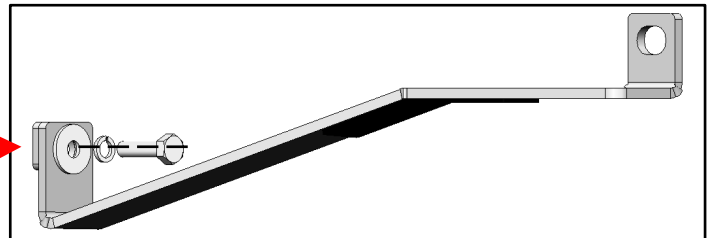
(Fig 17) PS support bracket mount location

(Fig 18) The DS & PS support brackets can be slide through in the opening of the bumper



(Fig 19) Add the adhesive foam 1 to the support brackets as shown

(Fig 20)
Attach support bracket to mounting location
(2) 8mm Hex Bolts
(2) 8mm Lock Washers
(2) 8mm Flat Washers



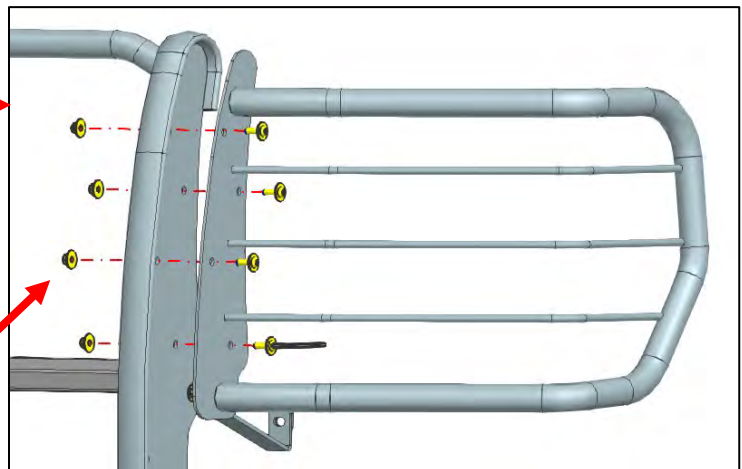
(Fig 21) Attached the support brackets

3

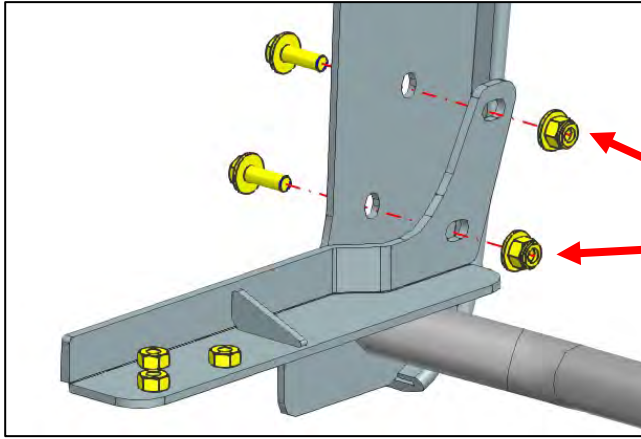
Follow (Fig 22-26) to assemble the grille guard body components and then mount them to the mounting brackets.

(Fig 22)
Install the Left Brush Guard onto the GRILLE GUARD. Bilateral symmetry install on the both sides.

- (8) Flat Washer D8 (8x24x2mm)
- (4) Button Head Bolt M8_25
- (4) Nylon Lock Nut M8



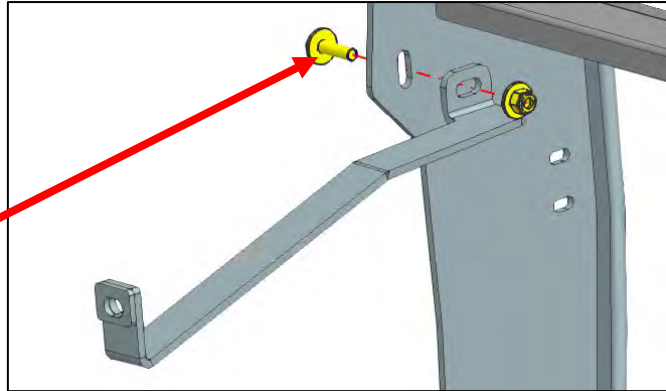
BLACK MODULAR GRILLE GUARD FOR 15-24 FORD E350/ E450



(Fig 23) Install Mounting Bracket 2 (left & right) onto the Middle Guard.

- (2) Nylon Lock Nut M10
- (4) Flat Washer D10_24_2.2
- (2) Hex Bolt (full thread) M10_30

(Fig 24) Mount the DS & PS support brackets to uprights



- (1) Hex Lock Nut M8
- (2) FLAT WASHER D8_22_2
- (1) Hex head bolt (full thread) M8_30

Complete Install

