



**BLACK HORSE
OFF ROAD**

TEL : 1-866-XANATOS

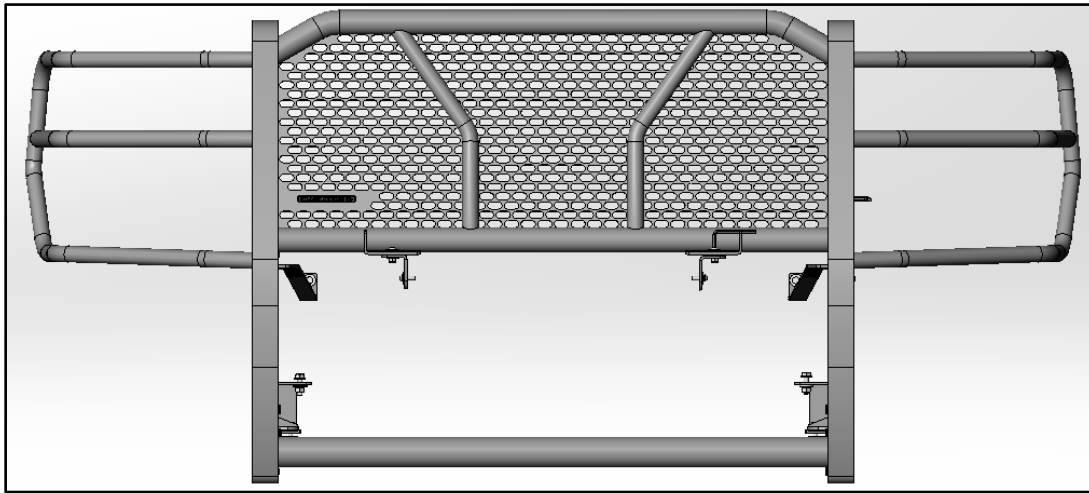
INSTALLATION INSTRUCTIONS

**MODULAR RUGGED GRILLE GUARD
2015-2024 FORD E-350/E-450 TRUCKS
PART#RU-FO350-B**

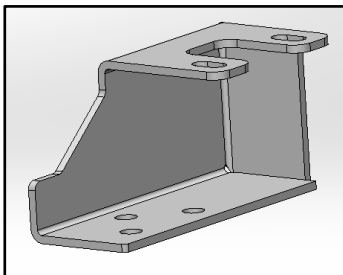
INSTALLATION INSTRUCTIONS

PARTS LIST:

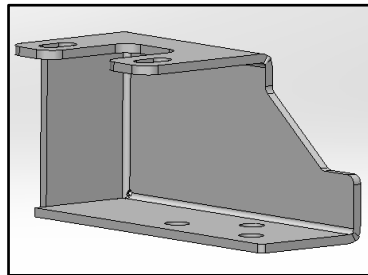
QTY	Item	QTY	Item
1	Grille Guard Main Body	4	8-1.25mm x 25mm Button Head Bolt
1	Driver/left Brush Guard	8	8mm x 24mm x 2mm Flat Washer
1	Passenger/right Brush Guard	2	8mm Nylon Lock Nut
1	Bottom Tube	4	8mm Lock Washer
2	Uprights	6	10-1.5mm x 30mm Hex Bolt
1	Driver/left Side Mounting Bracket 1	6	10-1.5mm x 35mm Button Head Bolt
1	Passenger/right Side Mounting Bracket 1	8	10-1.5mm x 40mm Button Head Bolt
1	Driver/left Side Mounting Bracket 2	38	10mm x 27mm x 3mm Flat Washer
1	Passenger/right Side Mounting Bracket 2	14	10mm Nylon Lock Nut
1	Driver/Left Side Support Bracket	4	10mm Hex Nut
1	Passenger/Right Side Support Bracket	10	10mm Lock Washer
2	LED Light Bracket	6	12mm-1.75 x 40mm Hex Bolt
2	10mm x 35mm Double Bolt Plate	12	12mm x 32mm x 3mm Flat Washer
2	Adhesive Foam 1 (For Support Brackets)	6	12mm Nylon Lock Nut
2	Adhesive Foam 2 (For Mounting Bracket 1)	1	Allen Wrench S=5
2	8-1.25mm x 30mm Hex Bolt	1	Allen Wrench S=6



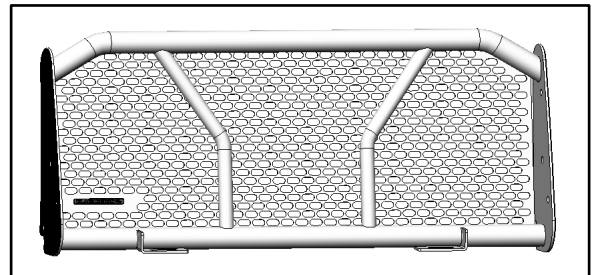
DS Mounting Bracket 1



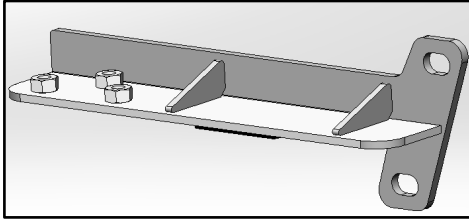
PS Mounting Bracket 1



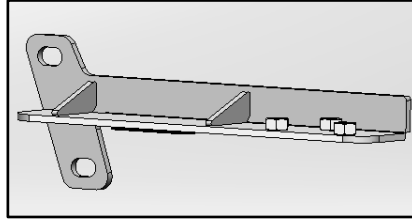
Grille Guard Main Body



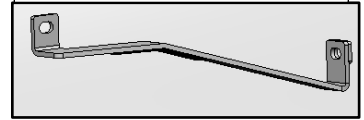
DS Mounting Bracket 2



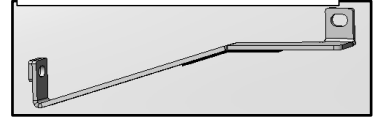
PS Mounting Bracket 2



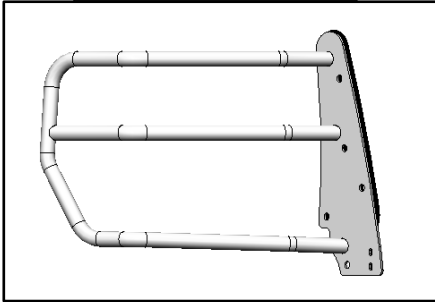
DS Support Bracket



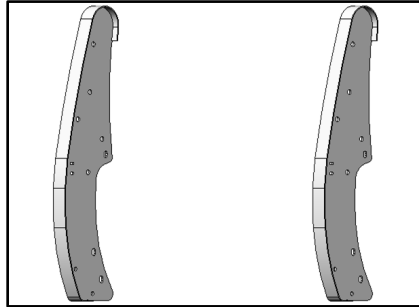
PS Support Bracket



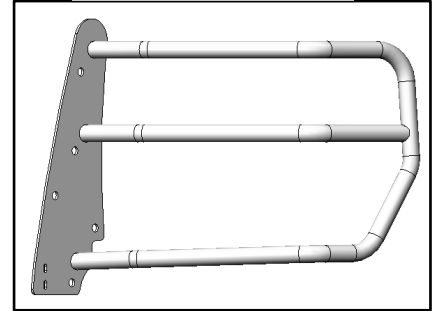
PS Brush Guard



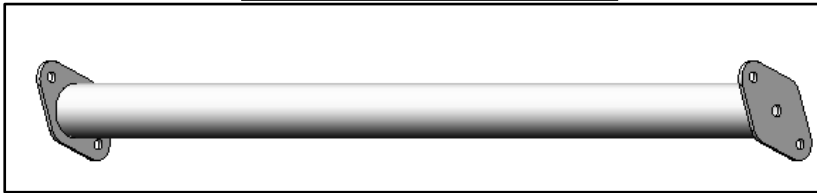
DS & PS Uprights



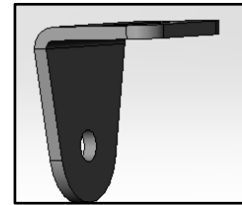
DS Brush Guard



Bottom Tube



DS & PS LED Brackets



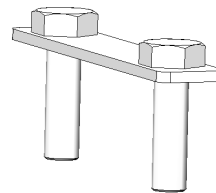
Lock Washer



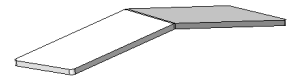
Flat Washer



Hex Bolt



Double Bolt Plate



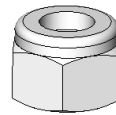
Adhesive Foam 1



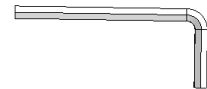
Adhesive Foam 2



Button Head Bolt



Lock Nut



Allen Key

TOOLS REQUIRED



Ratchet



13mm Socket
16mm Socket
18mm Socket



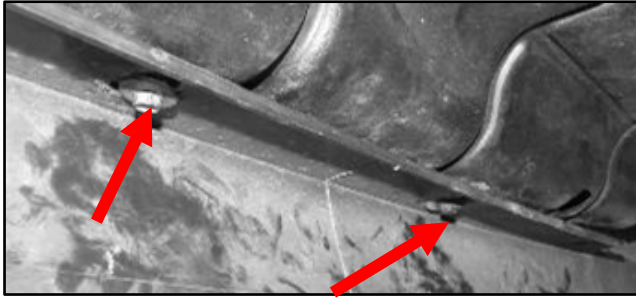
Extensions



Wrench

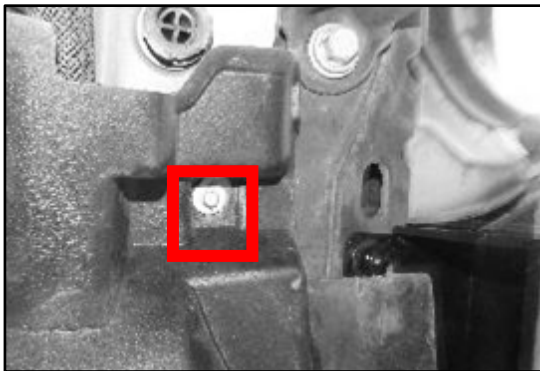
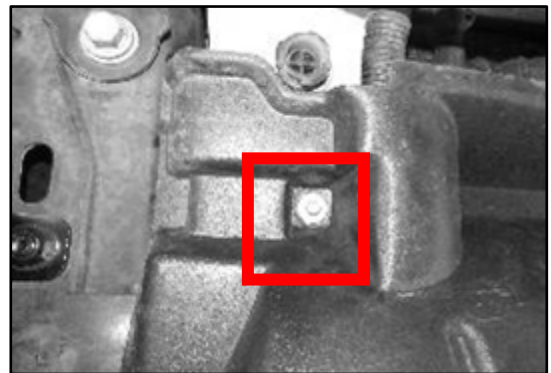
1

Follow (Fig 1-7) to prepare the bumper for the grille guard install.



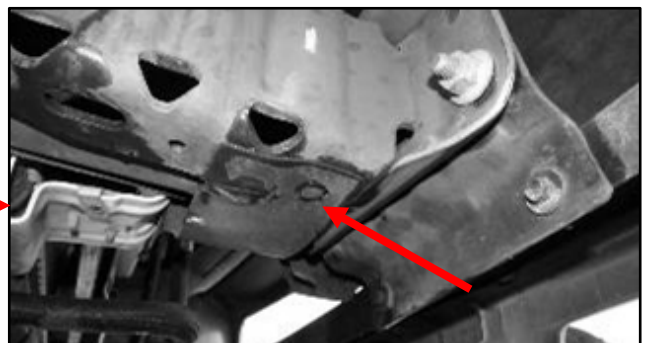
(Fig 1) Start at the front of the vehicle underneath the front bumper & remove the skid plate

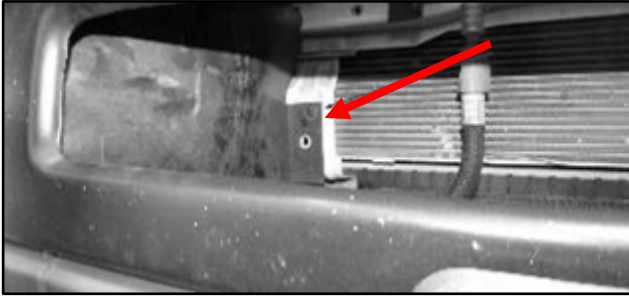
(Fig 2) Remove the skid plate by removing the DS bolt that mount the skid plate to the frame



(Fig 3) Remove the skid plate by removing the PS bolt that mount the skid plate to the frame

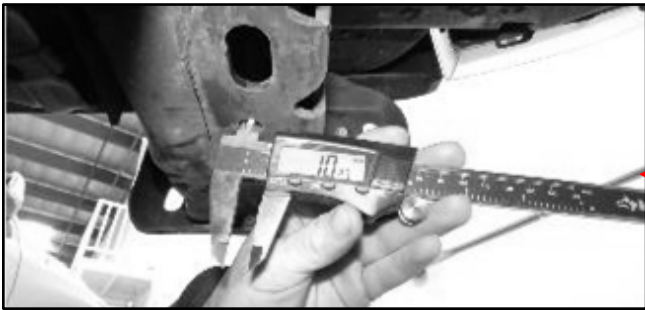
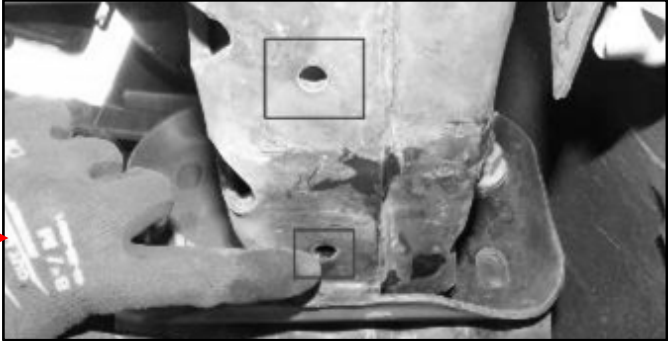
(Fig 4) Once skid plate is removed you can now remove the plastic cover on the DS & PS by removing the following clips





(Fig 5) Remove the plastic cover behind the grille that is also being held on by a clip

(Fig 6) Drill holes to enlarge them to about 10mm diameter

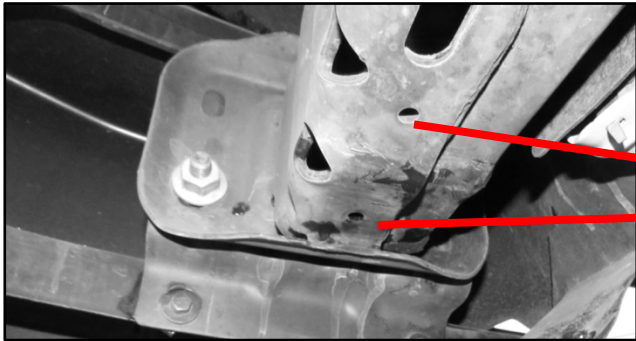
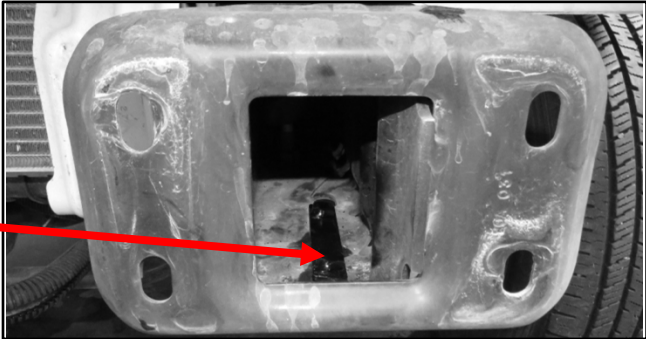


(Fig 7) Drill holes to enlarge them to about 10mm diameter

2

Follow (Fig 8 – 21) to install the mounting brackets and support brackets.

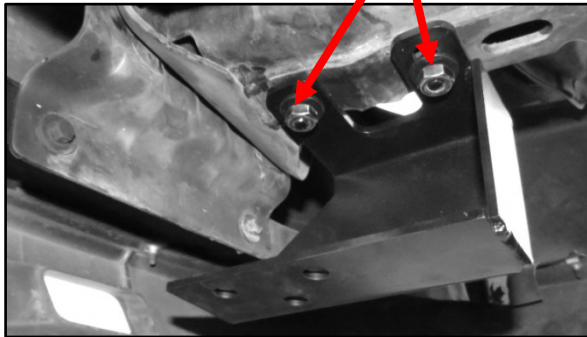
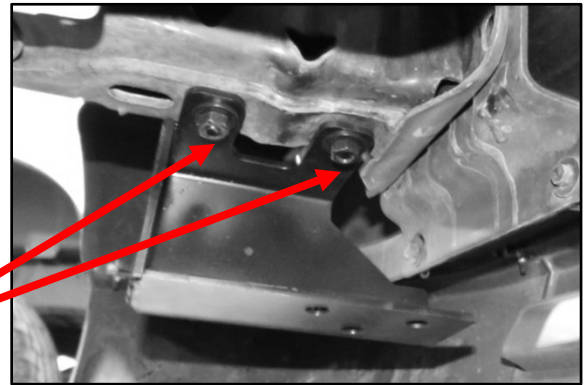
(Fig 8) Insert the double bolt plate inside the DS & PS frame horn tube



(Fig 9) The double bolt plate could be installed by positioning it through the gap of the bumper and frame horn plate

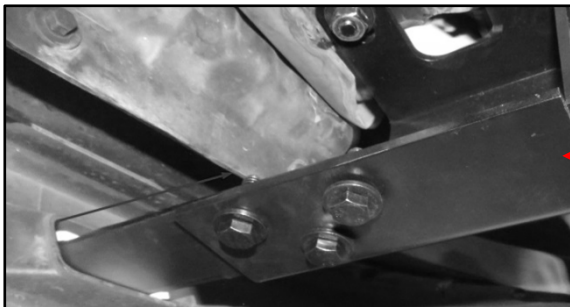
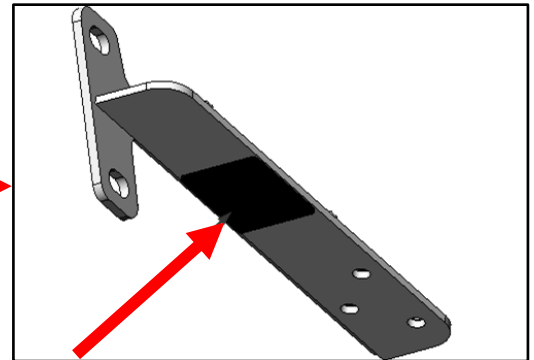
(Fig 10) Install the DS mounting bracket 1 using the double bolt plate

- (2) 10mm Flat Washers
- (2) 10mm Lock Washers
- (2) 10mm Hex Nuts

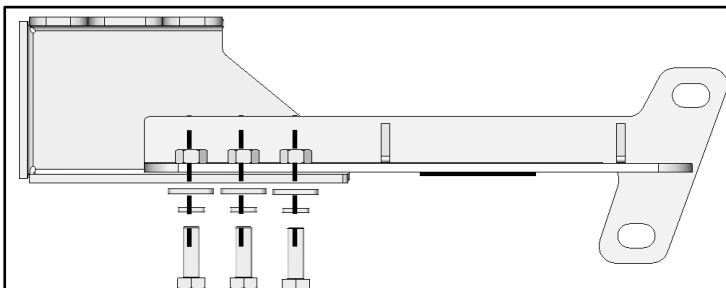


(Fig 11) Install the PS mounting bracket 1 using the double bolt plate

(Fig 12) Add the adhesive foam 2 to the mounting bracket 2

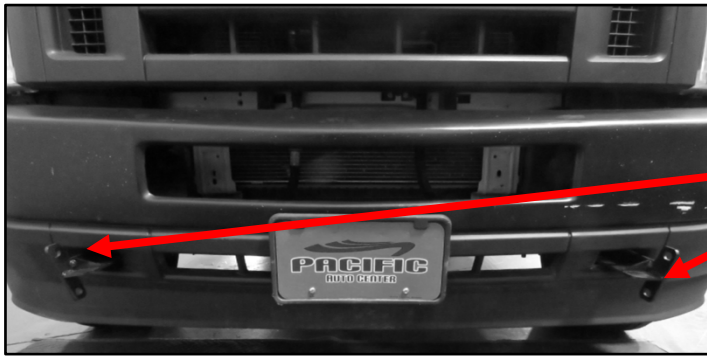


(Fig 13) Attach mounting bracket 2 to mounting bracket 1



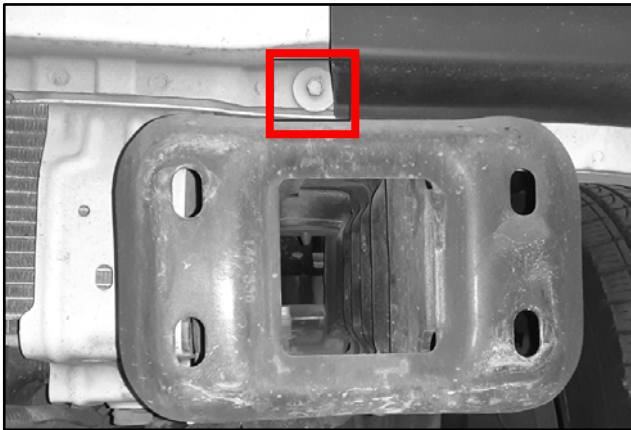
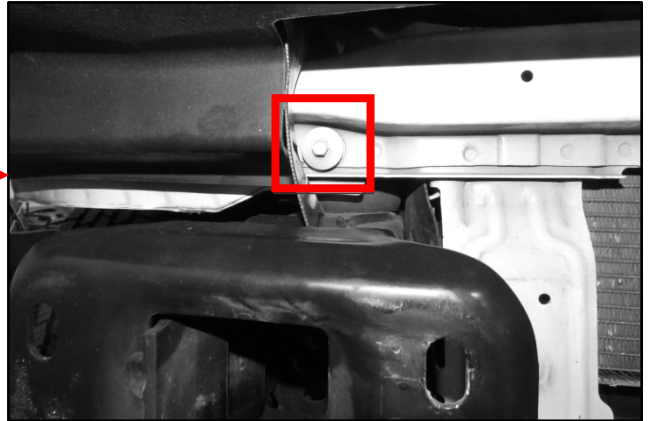
(Fig 14) Attach mounting bracket 2 to mounting bracket 1

- (3) 10mm Hex Bolts
- (3) 10mm Lock Washers
- (3) 10mm Flat Washers



(Fig 15) DS & PS mounting bracket 1 & 2 mounted

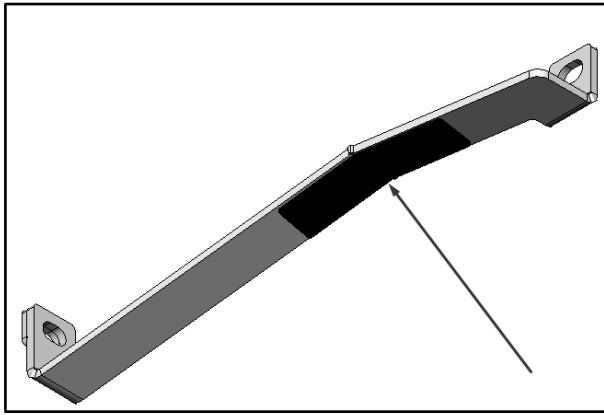
(Fig 16) DS support bracket mount location



(Fig 17) PS support bracket mount location

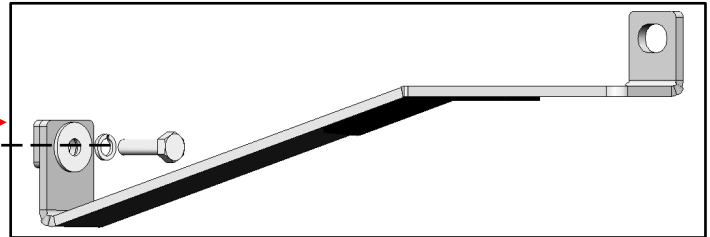
(Fig 18) The DS & PS support brackets can be slide through in the opening of the bumper





(Fig 19) Add the adhesive foam 1 to the support brackets as shown

(Fig 20)
 Attach support bracket to mounting location
 (2) 8mm Hex Bolts
 (2) 8mm Lock Washers
 (2) 8mm Flat Washers



(Fig 21) Attached the support brackets

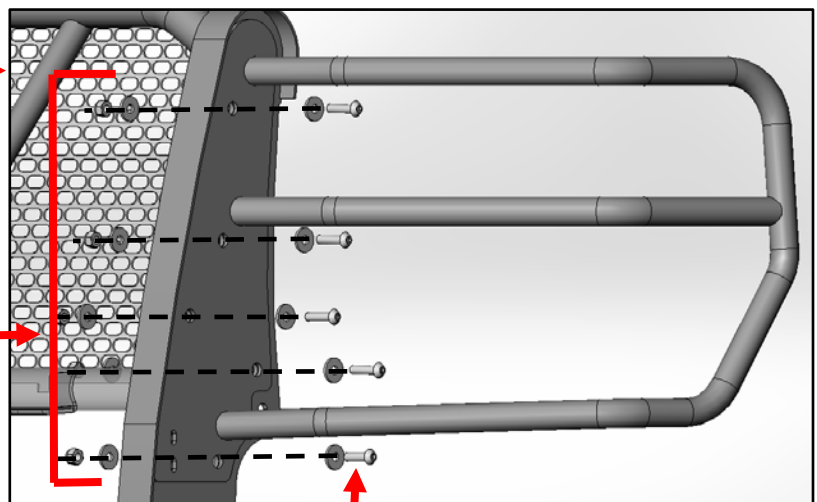
3

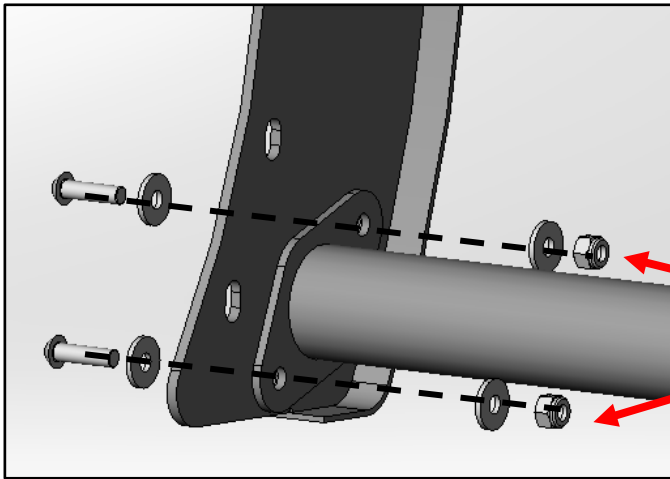
Follow (Fig 22-26) to assemble the grille guard body components and then mount them to the mounting brackets.

(Fig 22) Mount the brush guards to the uprights and main body

(4) 10mm x 40mm Button Head Bolts
 (5) 10mm Lock Nuts
 (10) 10mm Flat Washers

Note: Bottom slot uses:
 (1) 10 x 35mm Button Head Bolts

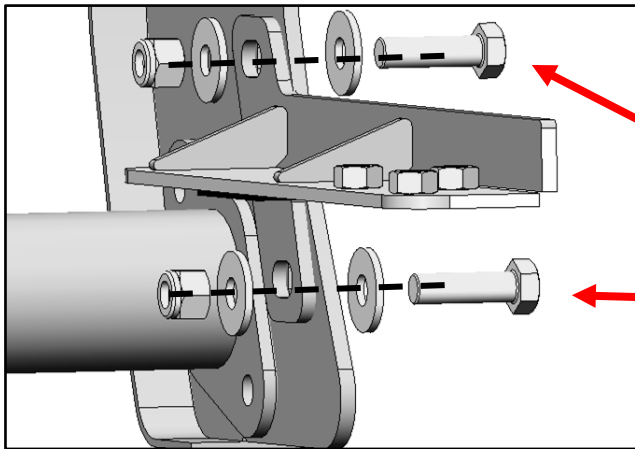
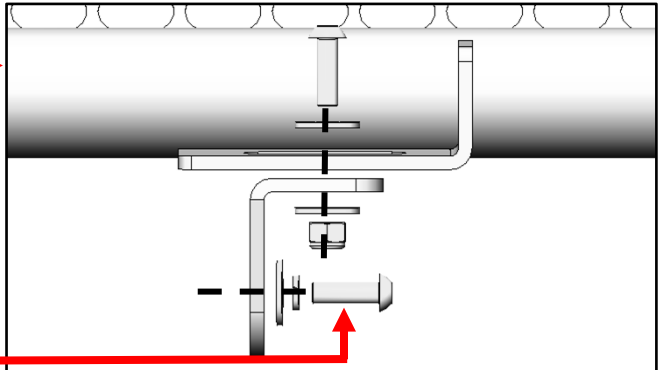




(Fig 23) Mount bottom tube to the DS & PS uprights

- (2) 10mm x 35mm Button Head Bolts
- (2) 10mm Lock Nuts
- (4) 10mm Flat Washers

(Fig 24) Mount the DS & PS LED light brackets
 (2) 8mm Button Bolts
 (1) 8mm Lock Nut
 (1) 8mm Lock Washer
 (3) 8mm Flat Washers
 Used to mount Light Bar

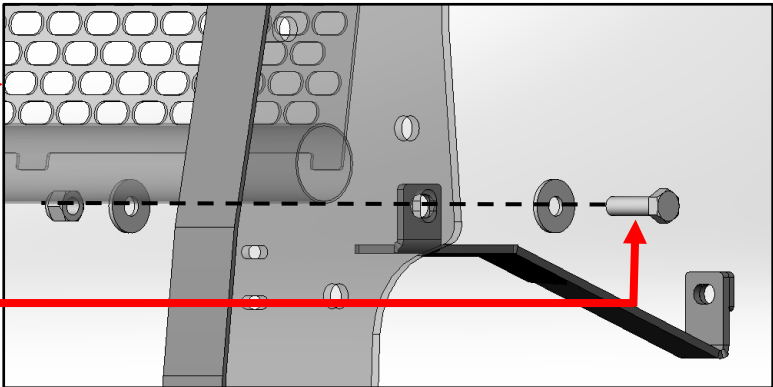


(Fig 25) Mount the mounting brackets 2 to the DS & PS uprights

- (2) 12mm Hex Bolts
- (2) 12mm Lock Nuts
- (4) 12mm Flat Washers

(Fig 26) Mount the DS & PS support brackets to uprights

- (1) 12mm Hex Bolts
- (1) 12mm Lock Nuts
- (2) 12mm Flat Washers





Complete Install