



# **INSTALLATION INSTRUCTIONS**

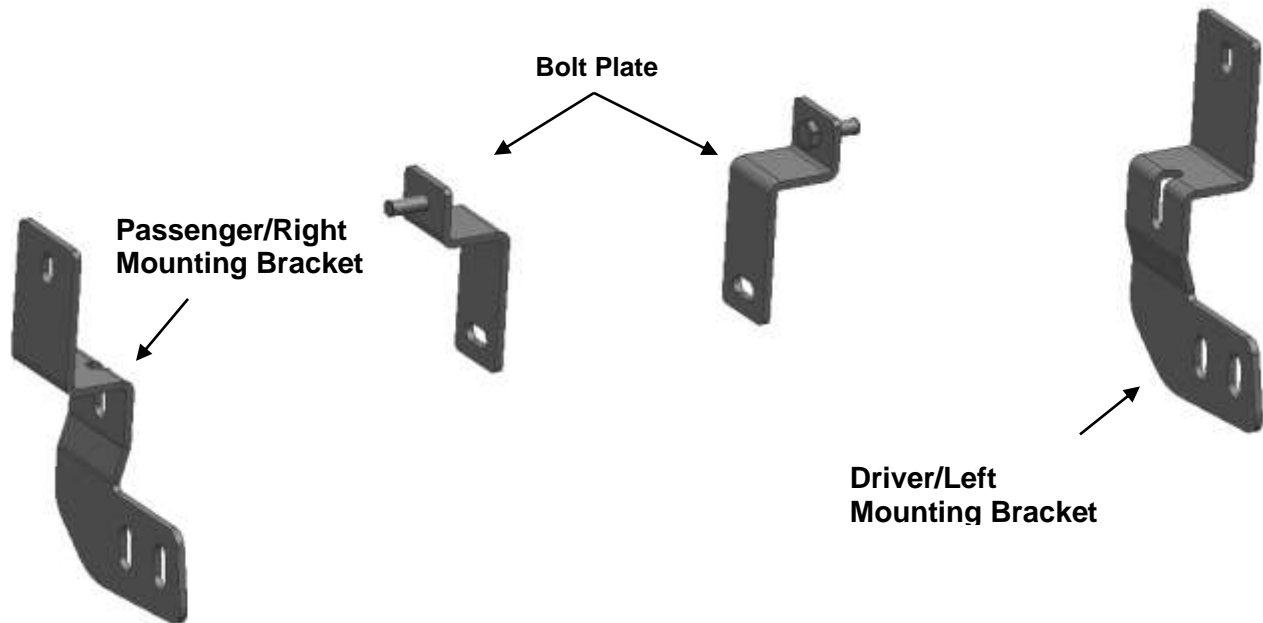
**STAINLESS BEACON BULL BAR**

**FOR  
TOYOTA RAV4 2019-2021**

**PART # BE-B4802S**

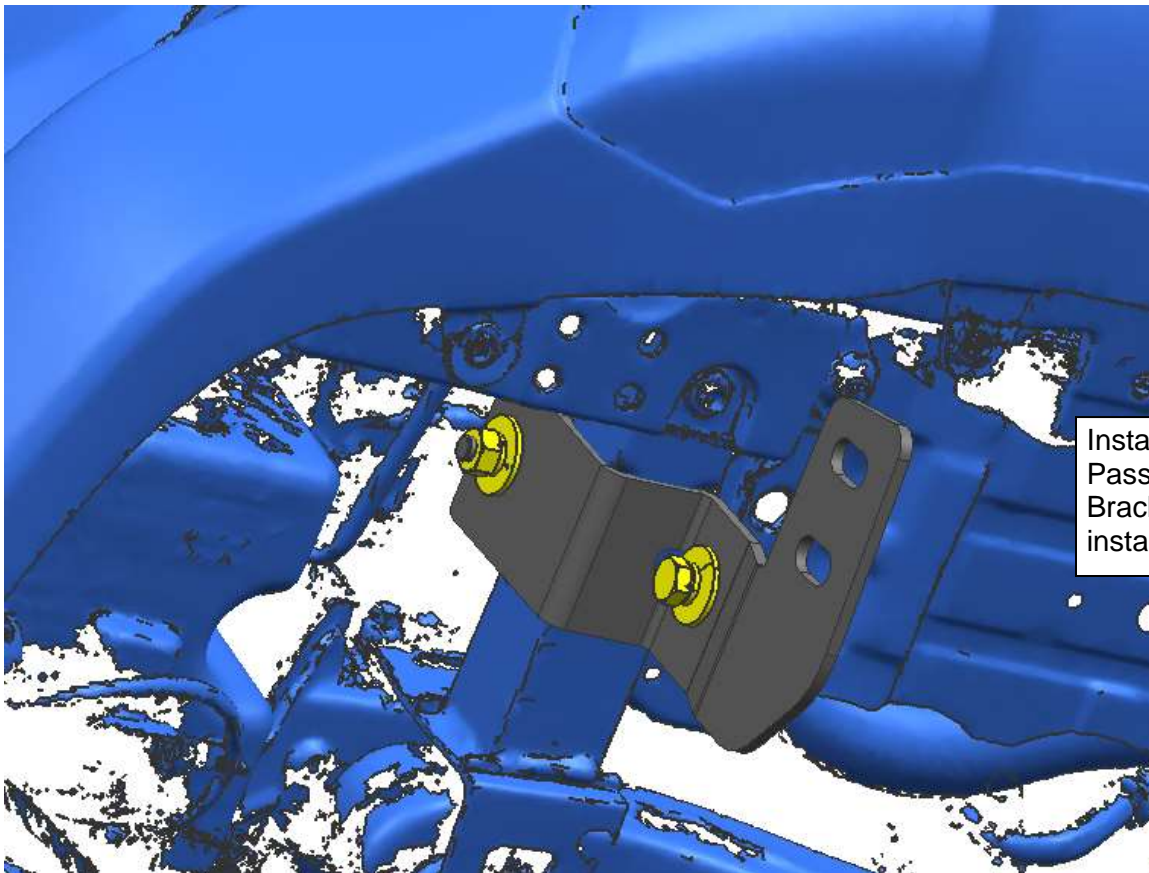
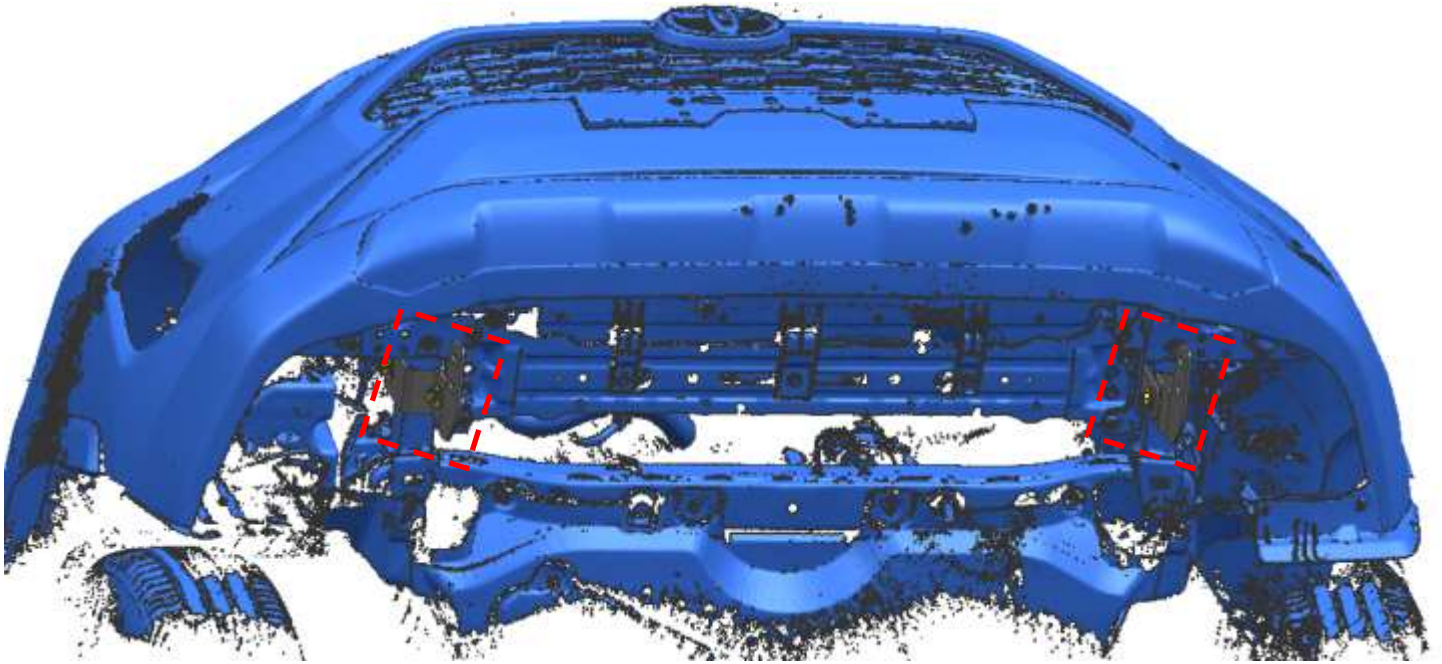
## PARTS LIST:

1	Driver/Left Mounting Bracket	8	Flat Washer D12 (12X37X3mm)
1	Passenger/Right Mounting Bracket	4	Hex Nut M10
2	Bolt Plate M10X30	4	Hex Nut M12
4	Lock Washer D10	2	Hex Bolt M10_35
4	Lock Washer D12	4	Hex Bolt M12_40
6	Flat Washer D10 (10×30×2.5mm)		

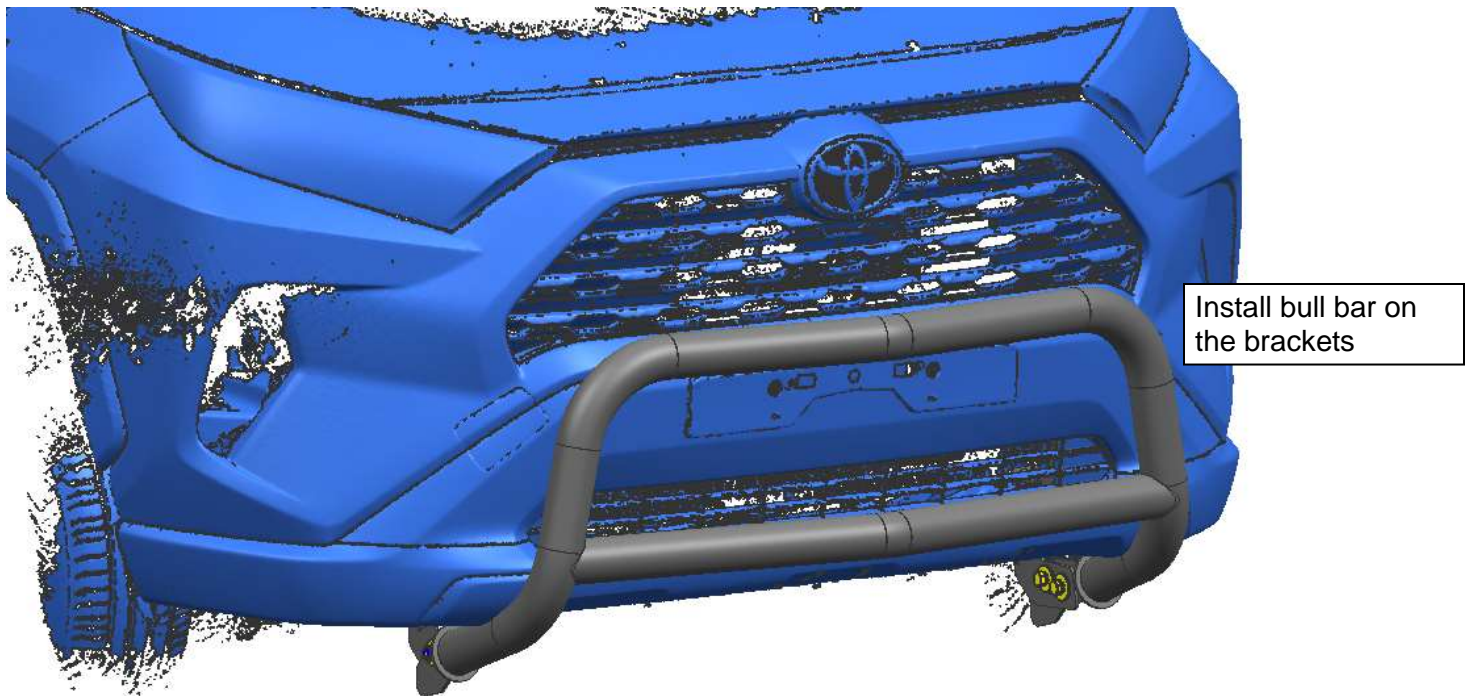
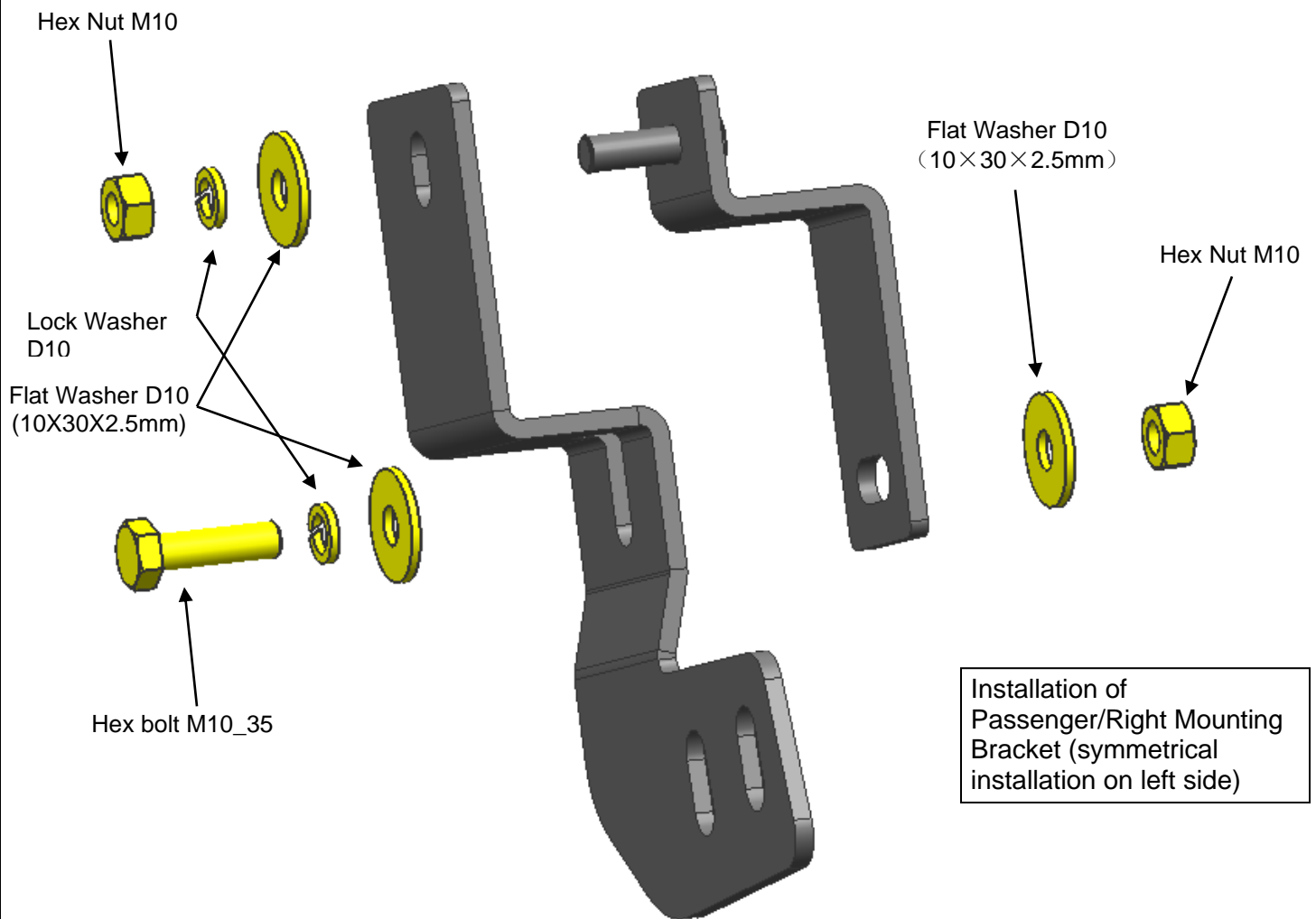


## PROCEDURE:

1. REMOVE CONTENTS FROM BOX. VERIFY ALL PARTS ARE PRESENT. READ INSTRUCTIONS CAREFULLY BEFORE STARTING INSTALLATION. CUTTING IS REQUIRED. ASSISTANCE IS RECOMMENDED.
2. Use standard parts Lock Washer D10, Flat Washer D10, Hex Nut M10 and Hex Bolt M10\_35 to fix mounting brackets and bolt plates on girder.
3. Use standard parts Lock Washer D12, Flat Washer D12 (12X37X3mm), Hex Nut M12 and Hex Bolt M12\_40 to install bull bar on step 2 brackets.

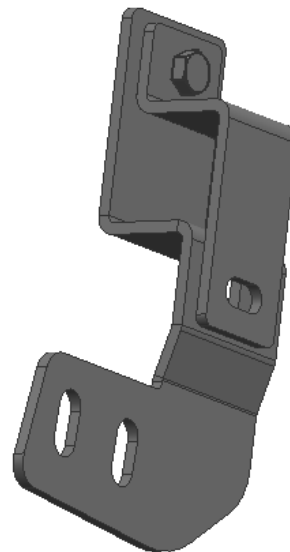
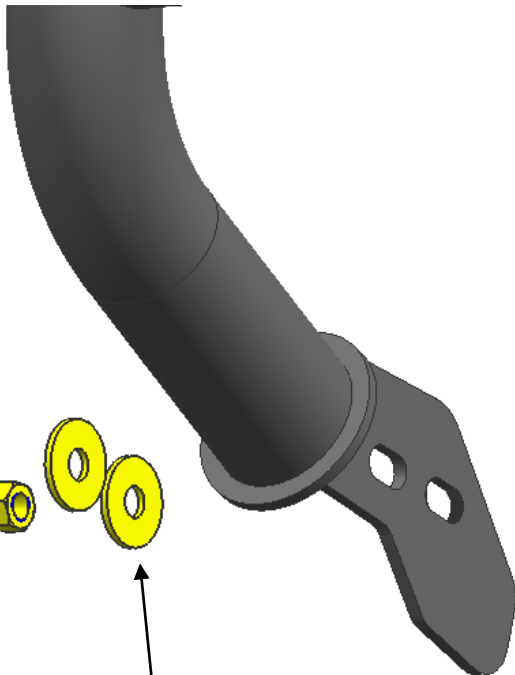


Installation of  
Passenger/Right Mounting  
Bracket (symmetrical  
installation on left side)

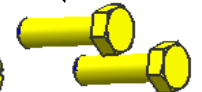




Install on the right side, pay attention to symmetrical installation



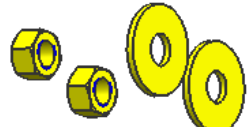
Hex Bolt M12\_40



Lock Washer D12



Flat Washer D12  
(12X37X3mm)



Flat Washer D12  
(12X37X3mm)

Hex Nut M12

