



INSTALLATION INSTRUCTIONS

REAR BUMPER GUARD (DOUBLE LAYER) FOR HONDA CRV

2017-2020

PART #CRDL-HOH602S











Before Installation

- Please read the instruction completely for easy installation, which will also help you to avoid scratches or other potential damages to your appealing car.
- The information shown here is for reference only and may differ from the product that you receive, however the goods are fitted in the same way.

Care and Cleaning

- Mild soap may be used also to clean the Product.
- Please periodically check and retighten all the hardware and clean the investment for a refresh look.

Parts list

NO.	QTY	PICTURE	NO.	QTY	PICTURE
①	1	 Rear bar	②	1	 Bracket-A-L
③	1	 Bracket-A-R	④	1	 Bracket-B-L
⑤	1	 Bracket-B-R	⑥	4	 Hex bolt M8*25
⑦	4	 Hex nut M10	⑧	4	 Spring washer D10
⑨	8	 Flat washer D10	⑩	4	 Hex bolt M10*35

Installation Pics

FIG.1

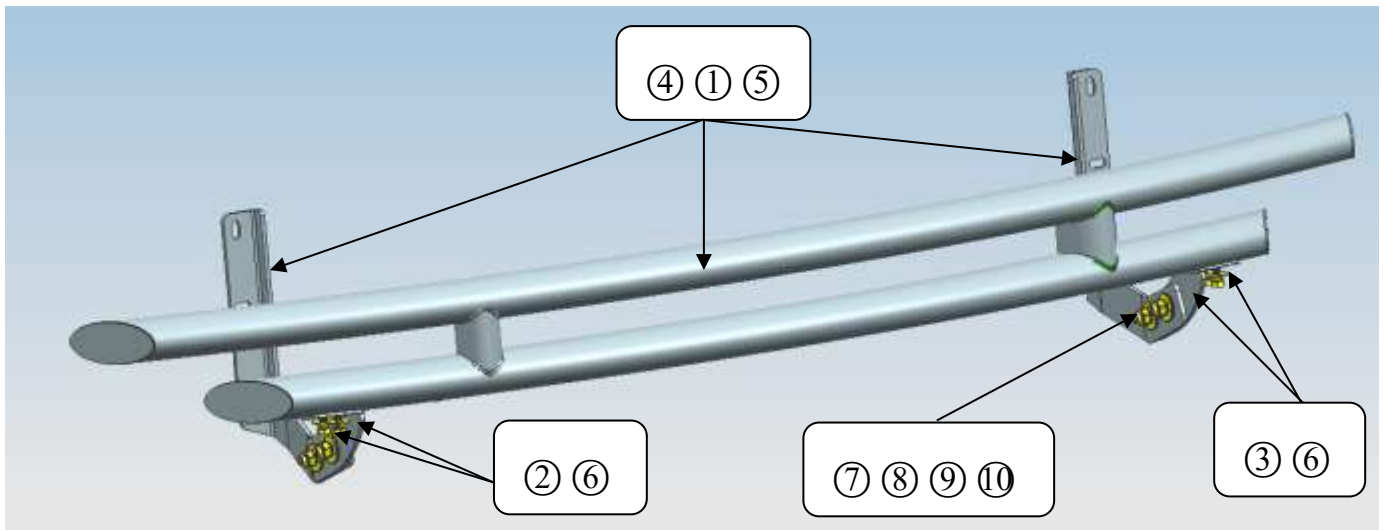
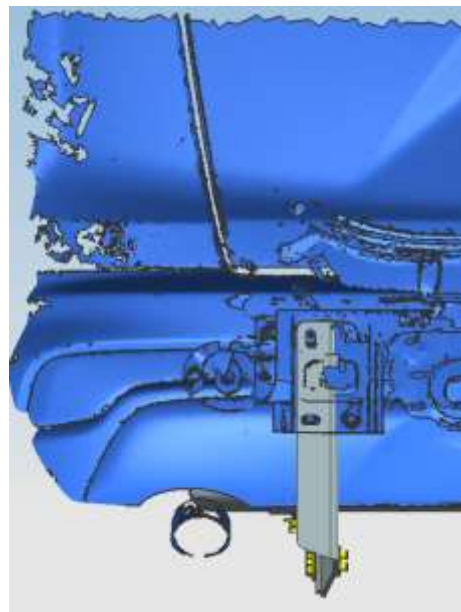
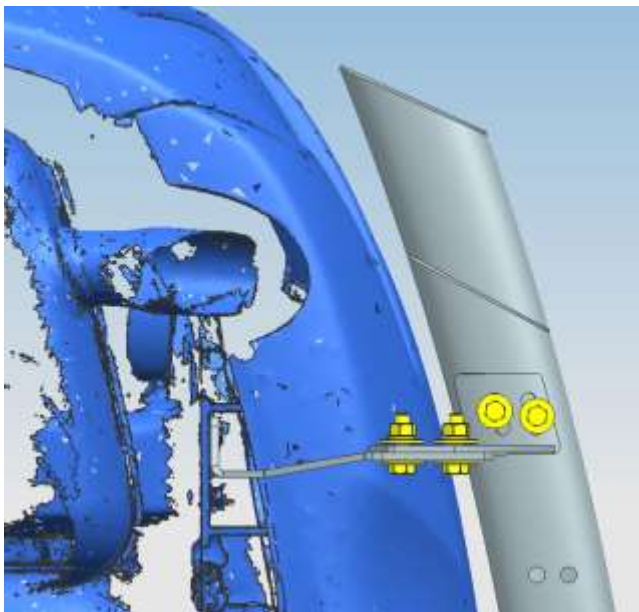
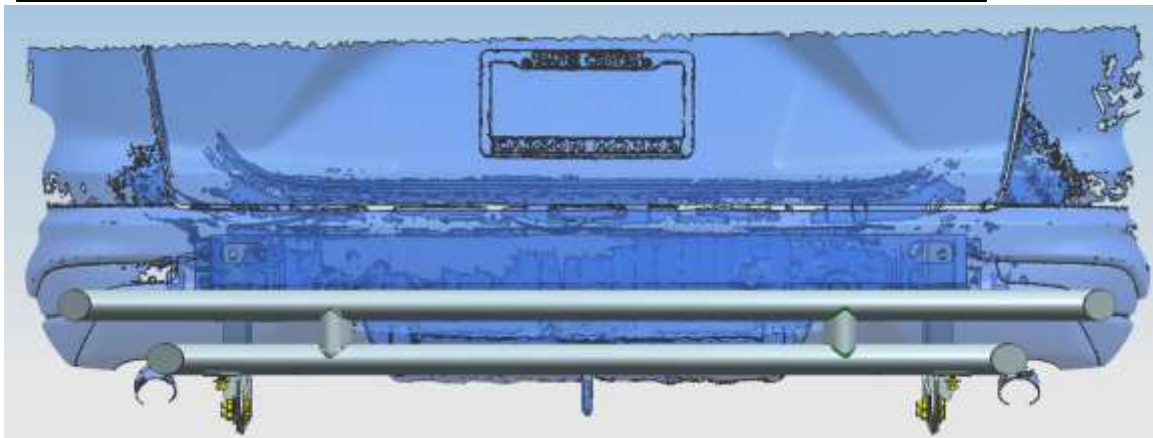


FIG.2 The installation of bracket, the same ways for both side.



● **INSTALLATION PROCEDURES:**

Step 1: Check all the contents are available in accordance with the above list.

Step 2: Remove the bottom factory skid plate and using factory bolts to install Bracket-B-L&R. Do not tighten all the bolts. (**FIG.2**)

Step 3: Install the rear bar on Bracket-A-L &B as **FIG.1**. Do not tighten all the bolts.

Step 4: Test the position properly, then tighten all the parts to make sure that the rear bar is steadily fixed

Step 5: Install the factory skid plate to original position.

Step 6: Installation is finished.

NOTE

Any damages and losses caused by improper installation and application, goes beyond our quality warranty.