

INSTALLATION INSTRUCTION

Black Rear Bumper Guard
Double LAYER
18-20 Honda Odyssey
PART # CRDL-HOH704B



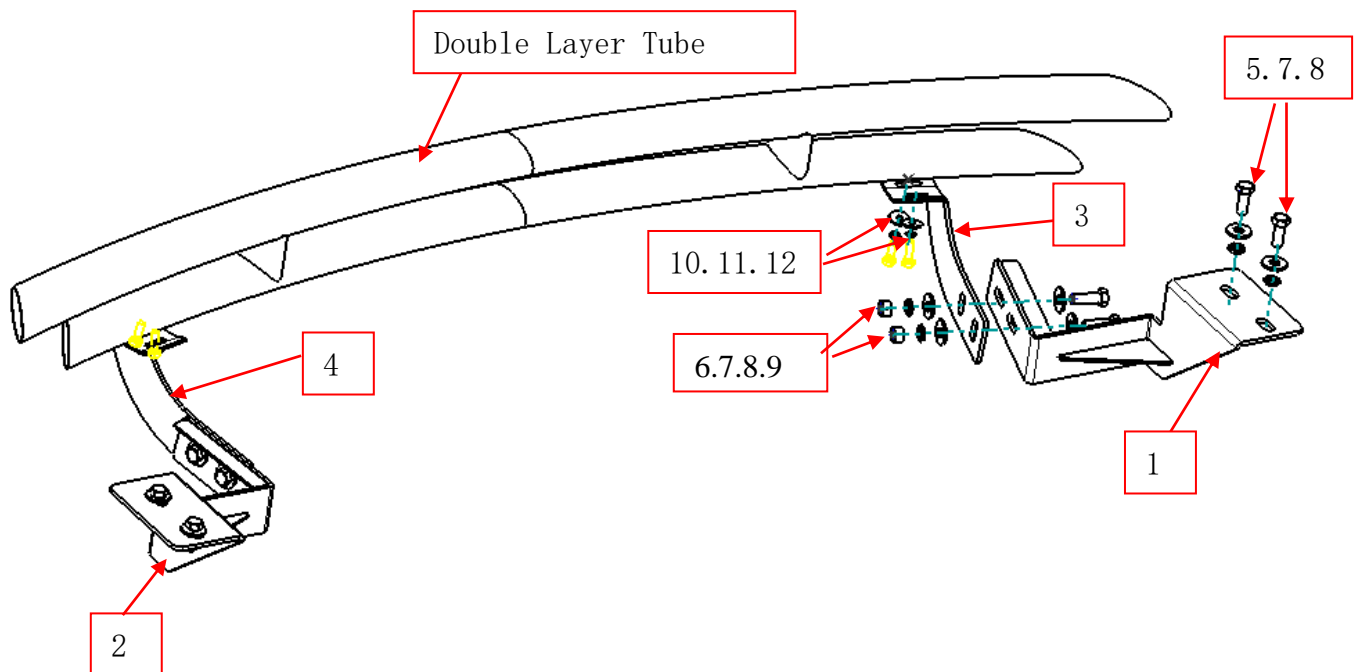
Attention

- Please read this installation menu before installing this part. Protect your car properly in case there is any scratch might happen.
- You may need to periodically to re-tighten all hardware for safety use after installation.
- Installation pictures are only for your reference, there might be some differences between pictures and real parts but no affection for your fitting.

PART LIST

NO.	NAME	QTY	REMARK	NO.	NAME	QTY	REMARK
1	Bracket (Driver Side)	1		7	Large Flat Washer	12	Φ 12x30x3.0
2	Bracket (Passenger Side)	1		8	Spring Washer	8	Φ 12
3	Bracket (Driver Side)	1		9	Hexagon Nut	4	M12
4	Bracket (Passenger Side)	1		10	Hex Head Bolt	4	M8X25
5	Hex Head Bolt(Fine thread)	4	M12X1.25X30	11	Large Flat Washer	4	Φ 8x25x2.0
6	Hex Head Bolt	4	M12X35	12	Spring Washer	4	Φ 8

INSTALLATION PICTURES

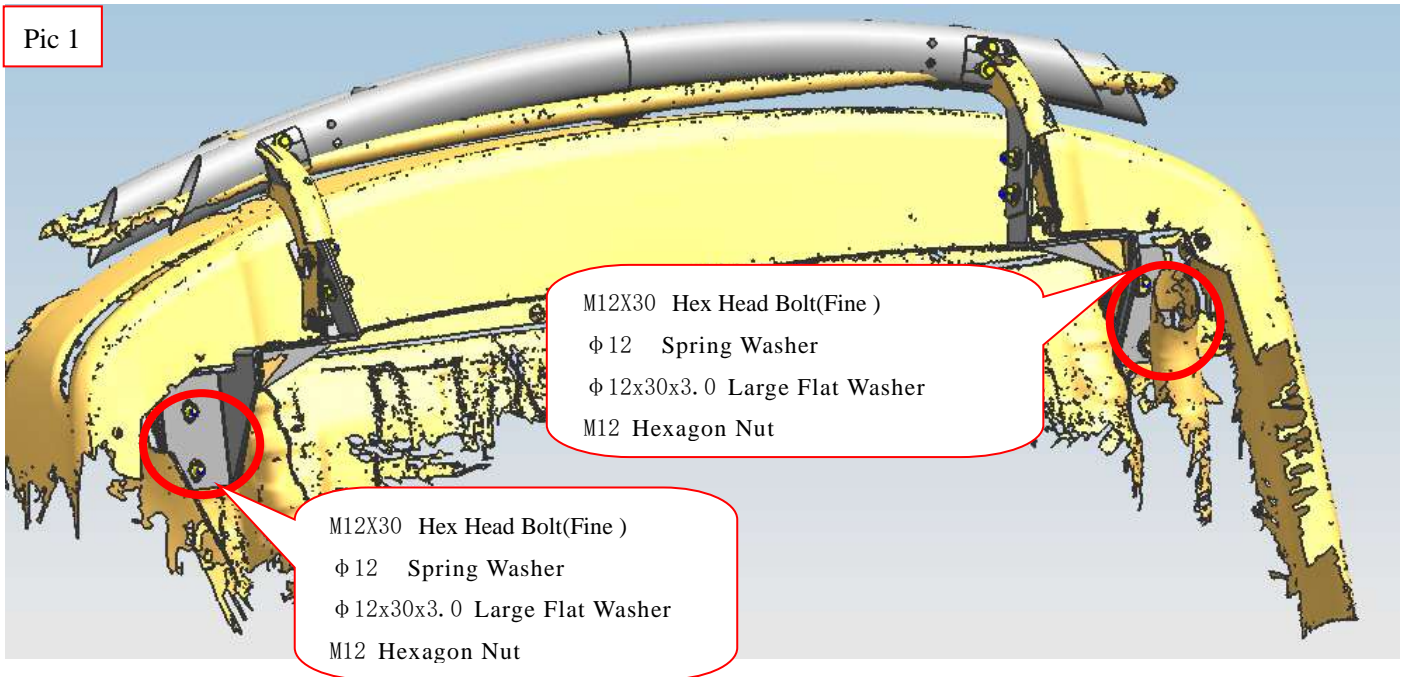


INSTALLATION PROCEDURES

Step 1: Refer to the Part list to check if all the hardware are included.

Step 1: Refer to the car bottom to install bracket 1 and bracket 2.

Pic 1

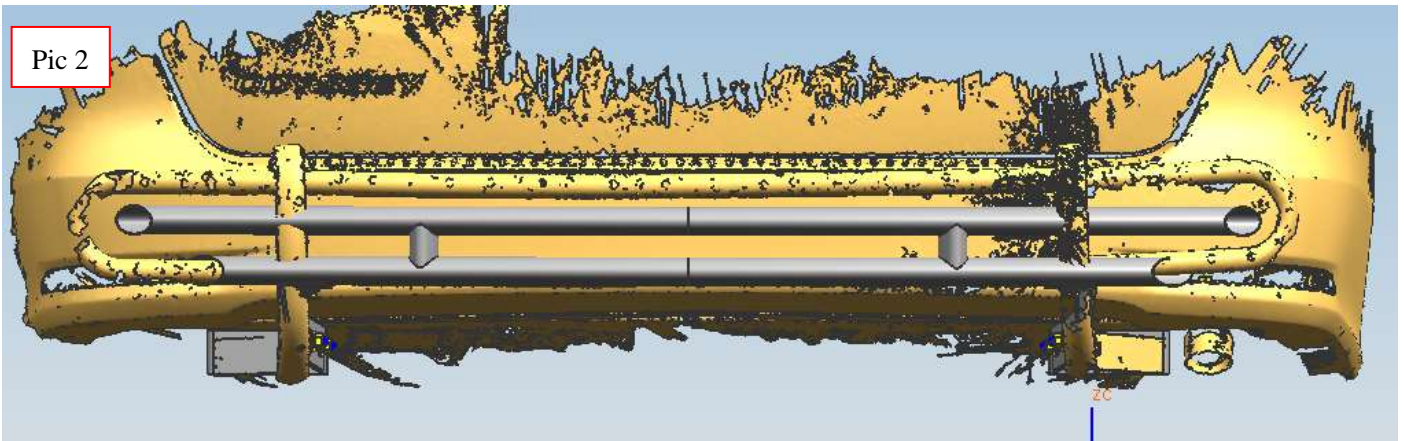


Step 3: Refer to Pic 2 and install the rear bumper on the brackets and adjust the rear bumper to the proper position.

Step 4: Check if all hard ware are installed and fasten.

Step5: Complete the installation.

Pic 2



Disclaimer: Caused due to improper installation initiates or some related problem and losses, are beyond our company's quality assurance.