



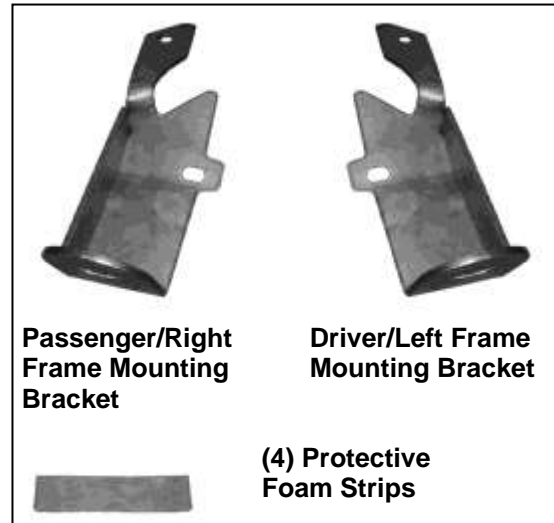
TEL: 1-866-XANATOS

INSTALLATION INSTRUCTIONS

**MAX BULL BAR FOR TOYOTA HIGHLANDER 01-07
PART # MBS-TOF5007**

PARTS LIST:

1	Bull Bar
1	Driver Side Mounting Bracket
1	Passenger Side Mounting Bracket
2	12-1.75mm x 45mm Hex Bolts
2	12-1.75mm x 100mm Hex Bolts
2	12mm Lock Washers
6	12mm ID x 32mm OD x 3mm Flat Washers
2	12mm Nylon Lock Nuts
2	8-1.25mm x 25mm Hex Bolts
4	8mm ID x 24mm OD x 2mm Flat Washers
2	8mm Nylon Lock Nuts
4	50mm x 100mm Adhesive Backed Foam Strips



PROCEDURE:

- 1. REMOVE CONTENTS FROM BOX. VERIFY ALL PARTS ARE PRESENT. READ INSTRUCTIONS CAREFULLY. CUTTING IS REQUIRED.**
- Carefully remove the plastic splash guard from under the front of the vehicle by removing the (4) screws on top, (4) screws on bottom and (1) fastener on each side, **(Figure 1)**. Place splash guard on a clean, stable work surface.
- Remove the plastic plugs located on the top and bottom of the crossmember, **(Figure 2A & 2B)**.
- Hold the Mounting Brackets up in position to check for clearance between the plastic bumper cover and the Mounting Bracket. **NOTE:** (4) Adhesive Backed Foam Strips have been provided to protect the bumper cover from direct contact with the Mounting Bracket. Apply to the top surface of the Mounting Brackets as necessary.
- Bolt the rearmost mounting hole on the Driver Side Mounting Bracket up to the holes through the crossmember using (1) 12-1.75mm x 100mm Hex Head Bolt, (2) 12mm Flat Washers and (1) 12mm Nylon Lock Nut. Secure the forward mounting hole in the Bracket to the factory bumper support with (1) 8mm x 25mm Hex Bolt, (2) 8mm Flat Washers and (1) 8mm Nylon Lock Nut inserted through the support and the factory plastic shroud, **(Figure 3)**. **NOTE:** To make the installation easier, insert the hardware as listed down through the top of the crossmember and the bumper support, **(Figure 3)**. Do not tighten at this time. Repeat this step for passenger side Mounting Bracket installation.
- With assistance, hold the Bull Bar up to the Mounting Brackets and loosely attach it with the included (2) 12mm x 45mm Hex Bolts, (2) 12mm Flat Washers, and (2) 12mm Lock Washers, **(Figure 4)**.
- Level and adjust Bull Bar and tighten all hardware at this time.
- In order to re-install the plastic splash guard, some cutting is necessary. Once the Bull Bar is fully mounted, holde the splash guard up into its original position and mark the (2) locations that will need to be cut, **(Figure 5)**. Re-install the splash guard with the factory hardware removed in Step 1.

To protect your investment, wax this product after installing. Regular waxing is recommended to add a protective layer over the finish. Do not use any type of polish or wax that may contain abrasives that could damage the finish.

For stainless steel: Aluminum polish may be used to polish small scratches and scuffs on the finish. Mild soap may be used also to clean the Bull Bar.

For gloss black finishes: Mild soap may be used to clean the Bull Bar.

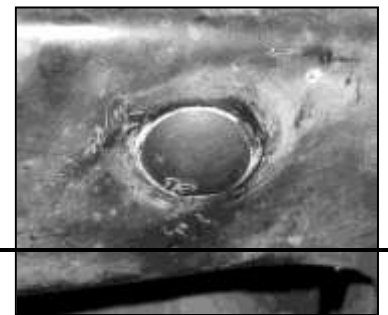
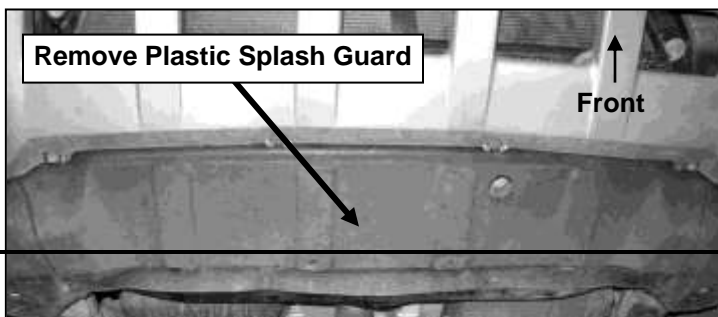
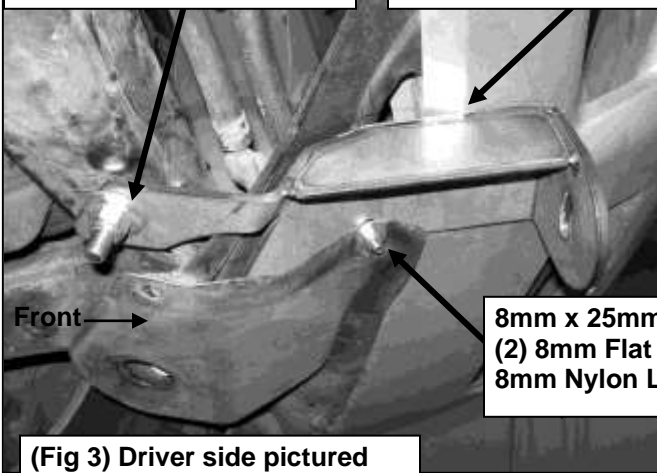


Fig 1

12mm x 100mm Hex Bolt
(2) 12mm Flat Washers
12mm Nylon Lock Nut

Apply Foam Strips to
top of Bracket-
between bumper
cover and Bracket



(Fig 3) Driver side pictured

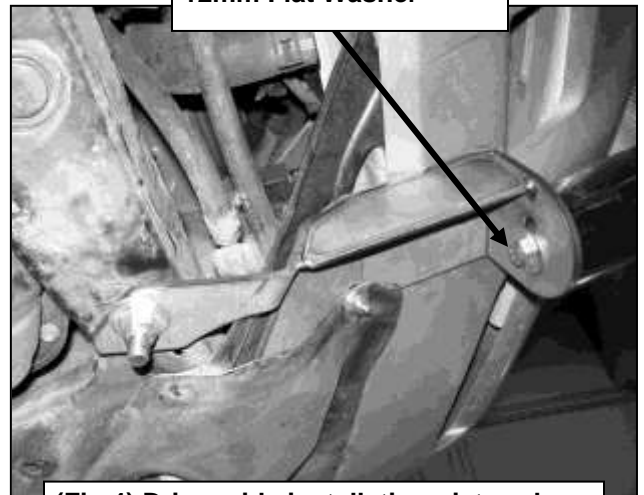
Remove plugs from
top and bottom of
crossmember

Fig 2B



Fig 2A

12mm x 45mm Hex Bolt
12mm Lock Washer
12mm Flat Washer



(Fig 4) Driver side installation pictured

Cut ends off of splash guard to
clear Mounting Brackets. Line
pictured for example only

Front

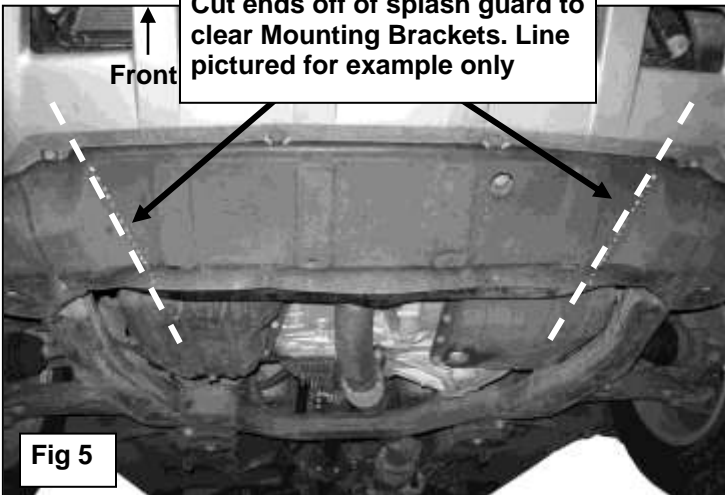


Fig 5