



INSTALLATION INSTRUCTIONS

TRAVELER CROSS BAR

FITS CHEVY COLORADO 15-22 / GMC CANYON 15-22 /

NISSAN FRONTIER 05-21 / FORD RANGER 19-23

PART #TR-52SI

PROTECTED BY ONE OR MORE PATENT

Before Installation

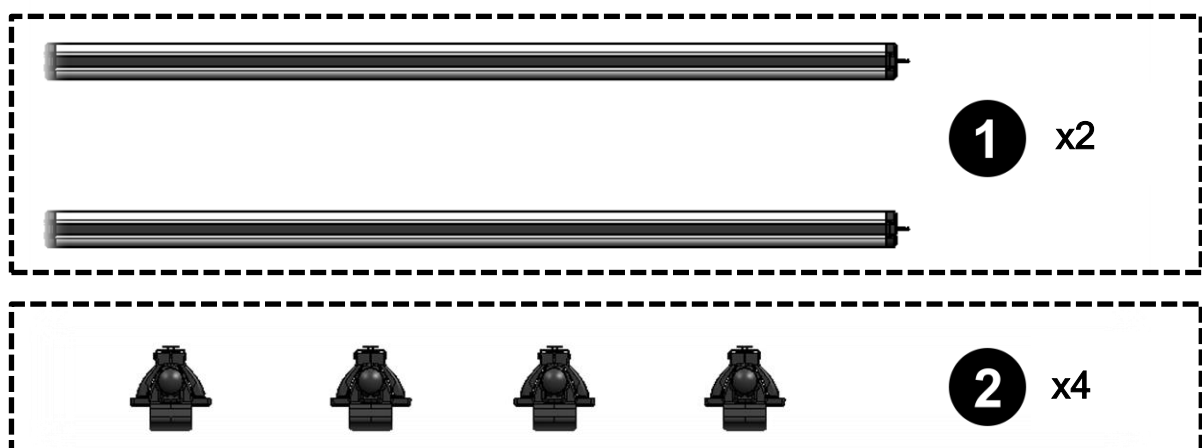
- Read all instructions carefully before installation. This will help prevent damage to your car.
- Images are for reference only. Your product may vary slightly, but the assembly process remains the same.



Care and Cleaning

- You can clean the product with mild soap.
- For long-term performance and reliability, regularly check and tighten all hardware.

Parts list

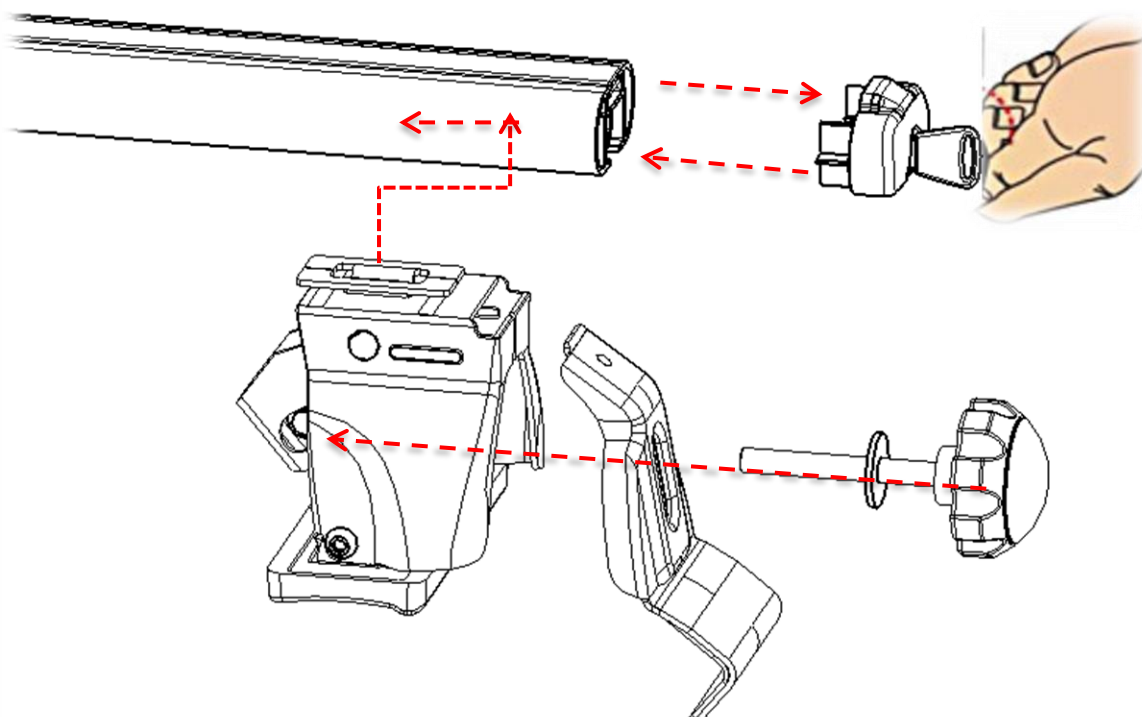




3

Two different clamps

Installation Instruction

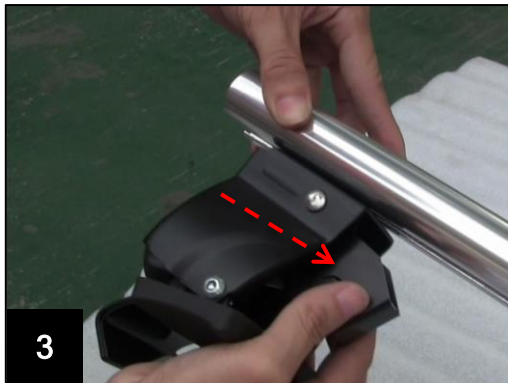


Installation Steps

Step 1:

Unlock both sides, insert support base into crossbar, then lock both sides.

Notice: Bring the mobile plate forward before placing the support base into the cross bar.
(The left side's installation is the same with the right.)



Step 2:

Install the assembled crossbar on the vehicle's roof. Repeat for the other side.

Notice: There are two kinds of clamps available for use.

1. Place the support base on the rain gutter, hooking it onto the roof's edge. If the clamp doesn't fit properly, replace it with the alternative clamp that was also provided.
2. Push the support base fully in the direction of the arrow. Tighten the plastic bolts securely. Close the door.



Step 3:

Inspect the crossbar's position, tightening all bolts if correct, or adjusting and then tightening if necessary.



Step 4: Installation complete!

NOTE

DISCLAIMER: We are not responsible for any quality problems caused by improper installation and use.