

# INSTALLATION INSTRUCTION

**SS Front Runner**

**10-16 Chevy Equinox / GMC Terrain**

**PART # 15GMTRSS**



**BLACK HORSE  
OFF ROAD**

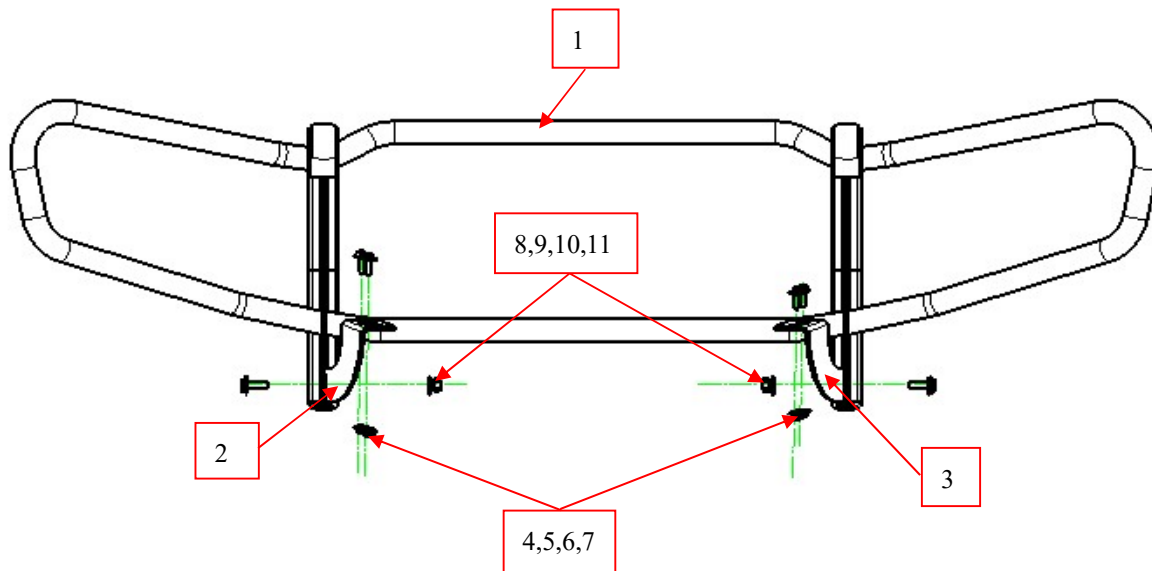
15GMTRSS

**Attention:**

- Please read this installation menu before installing this part. Protect your car properly in case there is any scratch might happen.
- You may need to periodically to re-tighten all hardware for safety use after installation.
- Installation pictures are only for your reference, there might be some differences between pictures and real parts but no affection for your fitting.

**PART LIST**

NO.	NAME	QTY	REMARK	NO.	NAME	QTY	REMARK
1	Bull Bar	1		7	Hexagon Nut	4	M8
2	Left Bracket	1		8	Hex Head Bolts	4	M12x35
3	Right Bracket	1		9	Spring Washer	4	Φ 12
4	Hex Head Bolts	4	M8x30	10	Large Washer	8	Φ 12x30x3.0
5	Spring Washer	4	Φ 8	11	Hexagon Nut	4	M12
6	Large Washer	8	Φ 8x25x2.0				

**INSTALLATION PICTURE****INSTALLATION PROCEDURE**

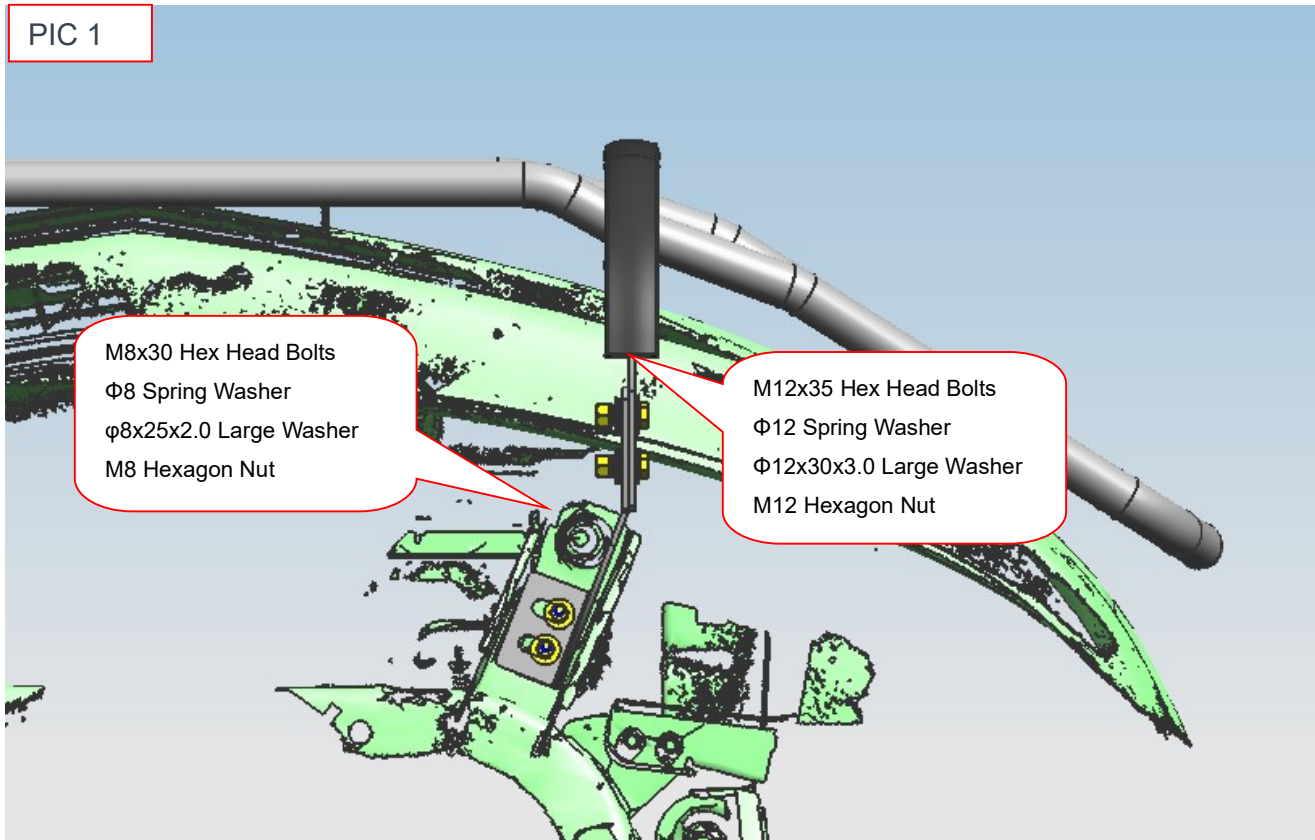
Step 1: Refer to the accessories list to check if all components are complete.

Step 2: Firstly, place the components according to the installation diagram of the bracket, distinguishing between the left and right brackets. Then, place them together with the fasteners in their respective positions to improve your installation speed.

15GMTRSS

Step 3: Refer to PIC 1, use standard components to screw in the bracket, but do not tighten the screws initially. (The installation method for the left and right brackets is the same.)

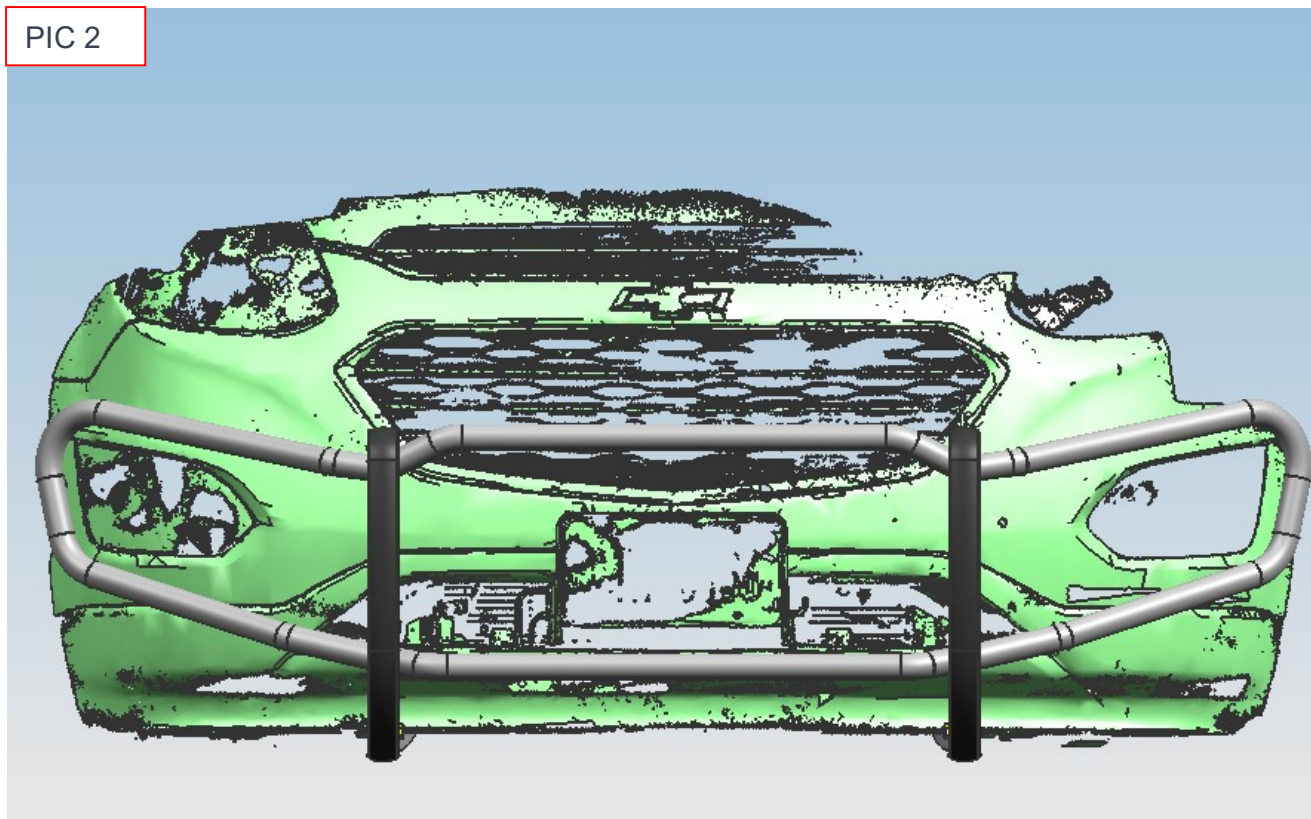
PIC 1



Step 4: Check if all hardware is installed and then fasten all to complete the installation.

15GMTRSS

PIC 2



**Disclaimer:** Caused due to improper installation initiates or some related problem and losses, are beyond our company's quality assurance.