



**BLACK HORSE
OFF ROAD®**

TEL: 1-866-XANATOS

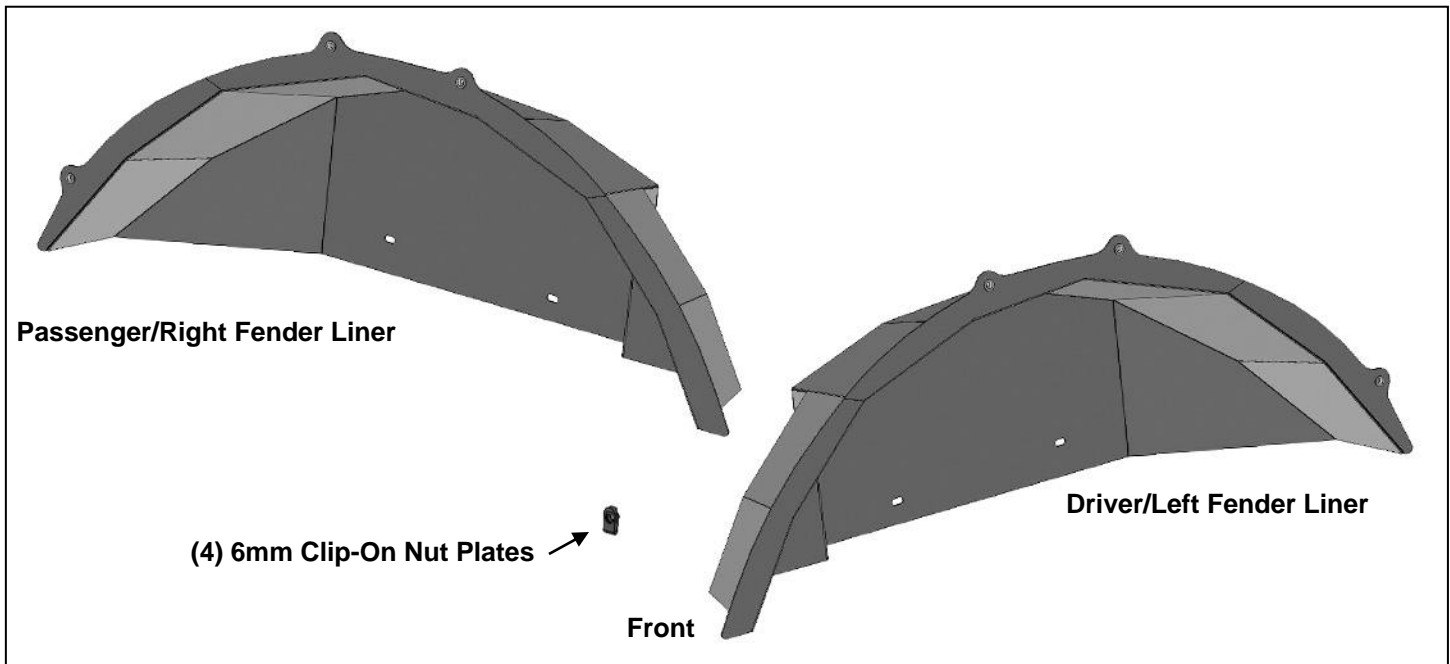
INSTALLATION INSTRUCTIONS

**1PAIR REAR FENDER LINERS
2018-24 JEEP WRANGLER JL 4-DOOR (Incl. 21-24 4xe)
PART#TFFJL4R**

1PAIR REAR FENDER LINERS
2018-24 JEEP WRANGLER JL 4-DOOR (Incl. 21-24 4xe)

PARTS LIST:

1	Driver/Left Rear Fender Liner	4	6-1.0mm Clip Nuts
1	Passenger/Right Rear Fender Liner	10	6-1.0mm x 20mm Button Head Combo Bolts
		1	4mm Wrench



PROCEDURE:

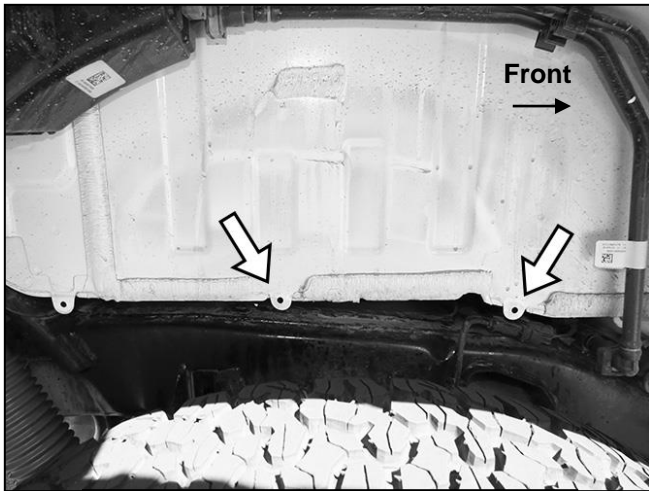
REMOVE CONTENTS FROM BOX. VERIFY ALL PARTS ARE PRESENT. READ INSTRUCTIONS CAREFULLY. ASSISTANCE IS RECOMMENDED.

1. Start installation on the passenger/right side of the vehicle. Locate the tabs along the bottom of the body above the frame, **(Figure 1)**. **NOTE:** The plastic fender liner attached to these tabs.
2. Select (2) 6mm Clip Nuts. Slide the Clip Nuts onto the (2) forward mounting tabs, **(Figure 2)**.
3. Select the passenger/right rear Fender Liner. Insert the Fender Liner into position up to the back of the inner body panel. **IMPORTANT:** If the vehicle has aftermarket fenders previously installed, it may be necessary to temporarily remove any hardware interfering with the Fender Liners. Depending on brand of fender, the replacement rear fender may attach to the same (2) top and the single rear mounting locations, **(Figure 3)**. Use either the 6mm hardware supplied with the fender or the included 6mm Combo Bolts if long enough. **NOTE:** It may be easier to install the Fender Liner with the vehicle raised up and/or rear tire removed. Line up the mounting holes in the Fender Liner with the back of the body panel.
4. Attach the Fender Liner to the (2) top mounting locations with the hardware attaching the fender or (2) 6mm Combo Bolts, **(Figures 3 & 5)**. Check hardware to see if it is long enough to go through the fender and into the 6mm threaded insert in the Fender Liner. Leave hardware loose at this time
5. Attach the bottom of the Fender Liner to the (2) 6mm Clip Nuts with the included (2) 6mm Combo Bolts, **(Figures 4 & 5)**.
6. Line up the rear mounting hole with the hole in the body. Attach the Fender Liner to the rear location with (1) 6mm Combo Bolt, **(Figures 3, 5 & 6)**.
7. Align and adjust the Fender Liner. Fully tighten all hardware attaching the Fender Liner and fender.
8. Repeat **Steps 1—7** for driver/left side Fender Liner installation.
9. Do periodic inspections to the installation to make sure that all hardware is secure and tight.

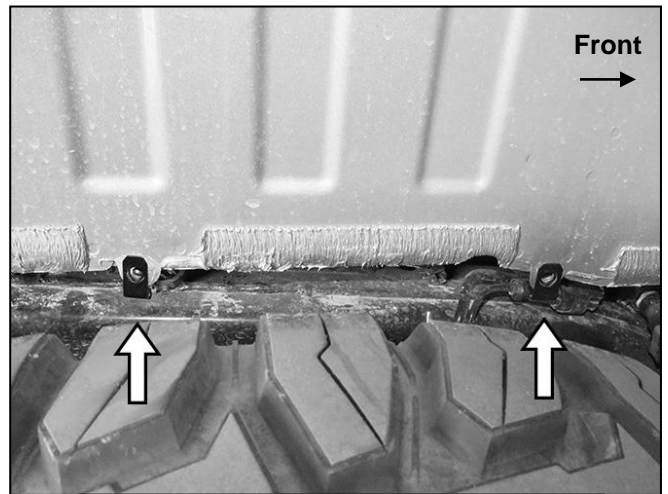
1PAIR REAR FENDER LINERS
2018-24 JEEP WRANGLER JL 4-DOOR (Incl. 21-24 4xe)

To protect your investment, Do not use any type of polish or wax that may contain abrasives that could damage the finish. Mild soap may be used to clean the Fender Liners.

Passenger/right Side Installation Pictured



(Fig 1) Locate mounting location on passenger/right tire opening (arrow)



(Fig 2) Slide Clip Nuts over mounting tabs on bottom of inner body panel (arrows-passenger/right side pictured)



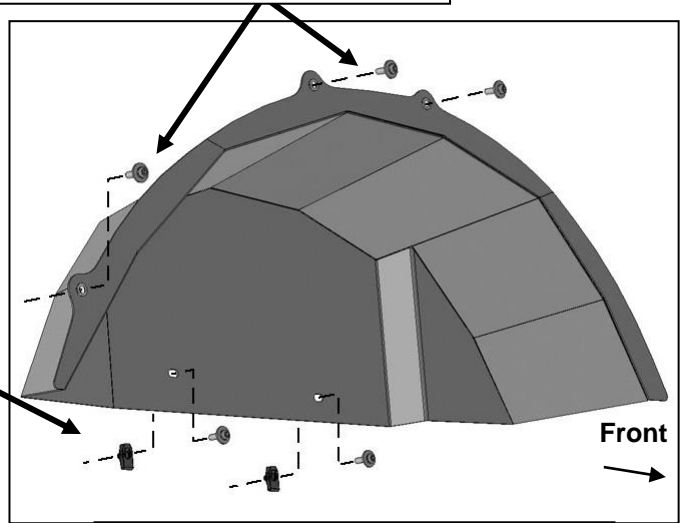
(Fig 3) Fender Liner will attach to the (3) factory locations typically used to attach aftermarket fenders (arrows). Use either the hardware supplied with the fenders (must be 6mm hardware) or the included 6mm Combo Bolts to attach the Fender Liner to these mounting points (passenger/right side pictured without fender for instruction purposes only)

1PAIR REAR FENDER LINERS
2018-24 JEEP WRANGLER JL 4-DOOR (Incl. 21-24 4xe)
Passenger/right Side Installation Pictured



(Fig 4) Attach Fender Liner to the (2) 6mm Clip Nuts with the included (2) 6mm Combo Bolts (arrows)

Reuse fender bolts or use included (3) 6mm Combo Bolts if long enough to go through fender and into liner



(2) 6mm Combo Bolts
(2) 6mm Clip Nuts

(Fig 5) Locate top mounting locations on bottom of fender supports (arrows)



(Fig 6) Pictured with fender example for instruction purposes only