



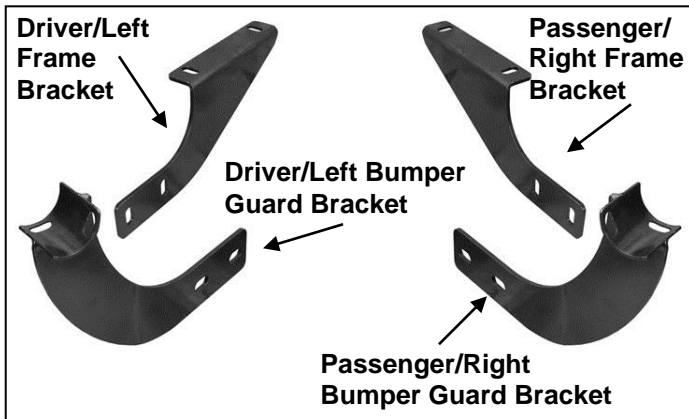
TEL: 1-866-XANATOS

INSTALLATION INSTRUCTIONS

**PART # 8D093945A-S/8D093945SS-S
REAR BUMPER GUARD
TOYOTA RAV4 2013 (SINGLE TUBE)**

PARTS LIST:

Qty	Description	Qty	Description
1	Rear Bumper Guard	8	12mm Lock Washers
1	Driver/Left Frame Bracket	12	12mm x 24mm OD x 2.5mm Flat Washers
1	Passenger/Right Frame Bracket	4	12-1.75mm Hex Nuts
1	Driver/Left Bumper Guard Brackets	4	8-1.25mm x 25mm Hex Bolts
1	Passenger/Right Bumper Guard Brackets	4	8mm x 24mm OD x 2mm Flat Washers
4	12-1.25mm x 35mm Special Fine Thread Hex Bolts	4	8mm Lock Washers
4	12-1.75mm x 30mm Hex Bolts		



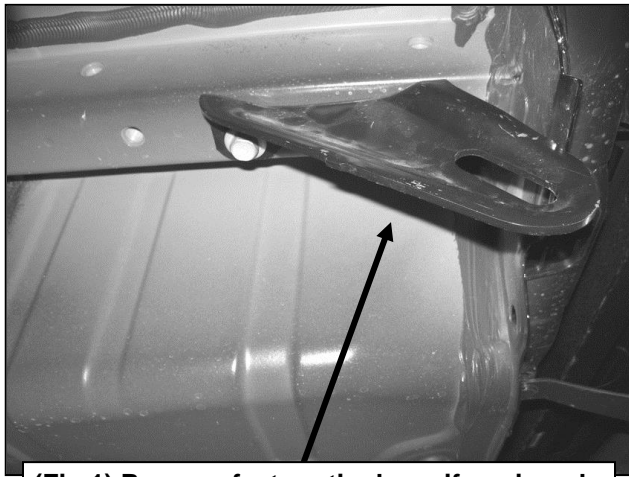
PROCEDURE:

- 1. REMOVE CONTENTS FROM BOX. VERIFY ALL PARTS ARE PRESENT. READ INSTRUCTIONS CAREFULLY BEFORE STARTING INSTALLATION. IMPORTANT!** The passenger side mounting location is very close to the muffler. Allow muffler to completely cool before starting the installation. Tow hitch, if equipped, must be removed for installation and cannot be reinstalled.
- Remove the factory tie down bracket located on the bottom of the driver side frame channel, **(Figure 1)**. **NOTE:** Tie down bracket will not be reinstalled.
- Locate the factory threaded holes in the bottom of the frame rail channel. Position the Frame Bracket up to the frame channel and line it up with the two outside threaded holes, **(Figure 2)**.
- Attach the driver side Frame Bracket to the bottom of the frame channel frame with the included (2) 12-1.25mm x 35mm **Special Fine Thread** Hex Bolts, (2) 12mm Lock Washers and (2) 12mm Flat Washers, **(Figure 3)**. Snug but do not tighten hardware at this time.
- Select the driver side Bumper Guard Mounting Bracket. Bolt the Mounting Bracket to the inside of the Frame Bracket with the included (2) 12-1.75mm x 30mm Hex Bolts, (2) 12mm Lock Washers, (4) 12mm Flat Washers and (2) 12mm Hex Nuts, **(Figure 3)**. Do not tighten at this time.
- Repeat **Steps 3 – 5** for the passenger side Bracket installation. **NOTE:** On some models, there may be an unused exhaust hanger hook attached to the muffler bracket. Remove unused hook if it can come in contact with passenger side Bracket, **(Figure 4)**.
- Carefully position the Rear Bumper Guard onto the Mounting Brackets. Attach the Rear Bumper Guard to the Brackets with the included (4) 8mm x 25mm Hex Bolts, (4) 8mm Lock Washers and (4) 8mm Flat Washers, **(Figure 5)**.
- Adjust the Rear Bumper Guard properly and tighten all hardware.
- Do periodic inspections to the installation to make sure that all hardware is secure and tight.

To protect your investment, wax this product after installing. Regular waxing is recommended to add a protective layer over the finish. Do not use any type of polish or wax that may contain abrasives that could damage the finish.

For stainless steel: Aluminum polish may be used to polish small scratches and scuffs on the finish. Mild soap may be used also to clean the Rear Bumper Guard. **Gloss black finishes:** Mild soap may be used to clean the Bumper Guard.

Driver side installation pictured



(Fig 1) Remove factory tie down if equipped

12-1.25mm x 35mm Special
Fine Thread Hex Bolts
12mm Lock Washers
12mm Flat Washers

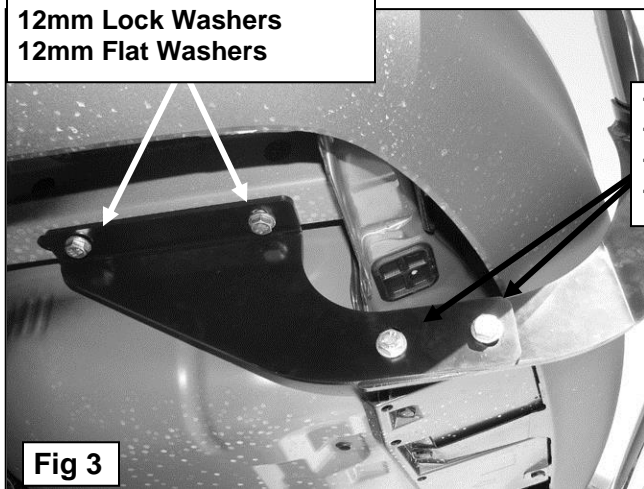


Fig 3

12-1.75mm x 30mm Hex Bolts
12mm Lock Washers
12mm Flat Washers
12mm Hex Nuts

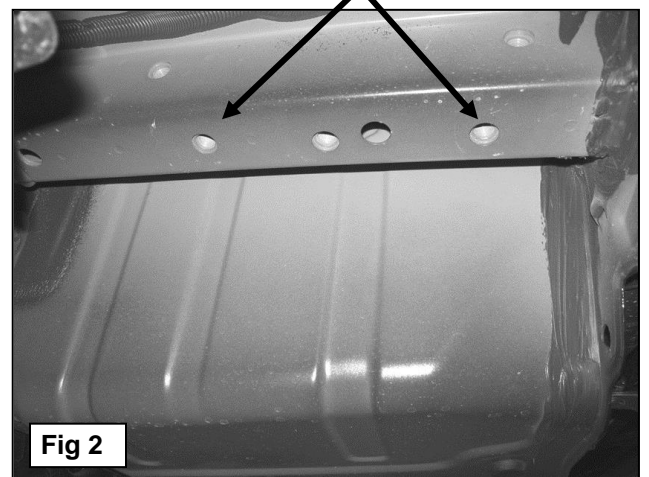


Fig 2

Passenger Side
Mounting Location-
remove hook on exhaust

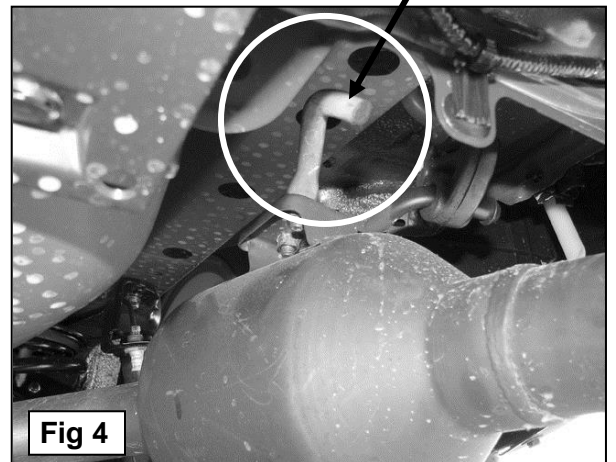


Fig 4

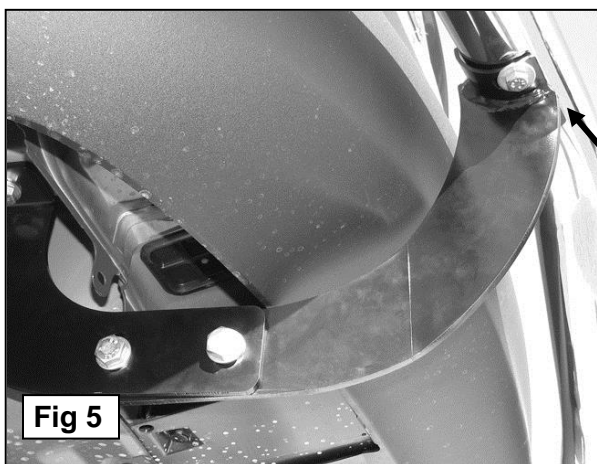


Fig 5

8mm x 25mm Hex Bolts
8mm Lock Washers
8mm Flat Washers