

INSTALLATION INSTRUCTION

Exceed Running Boards

14-21 ACURA MDX

PART # EX-ACM14



**BLACK HORSE
OFF ROAD**

Attention:

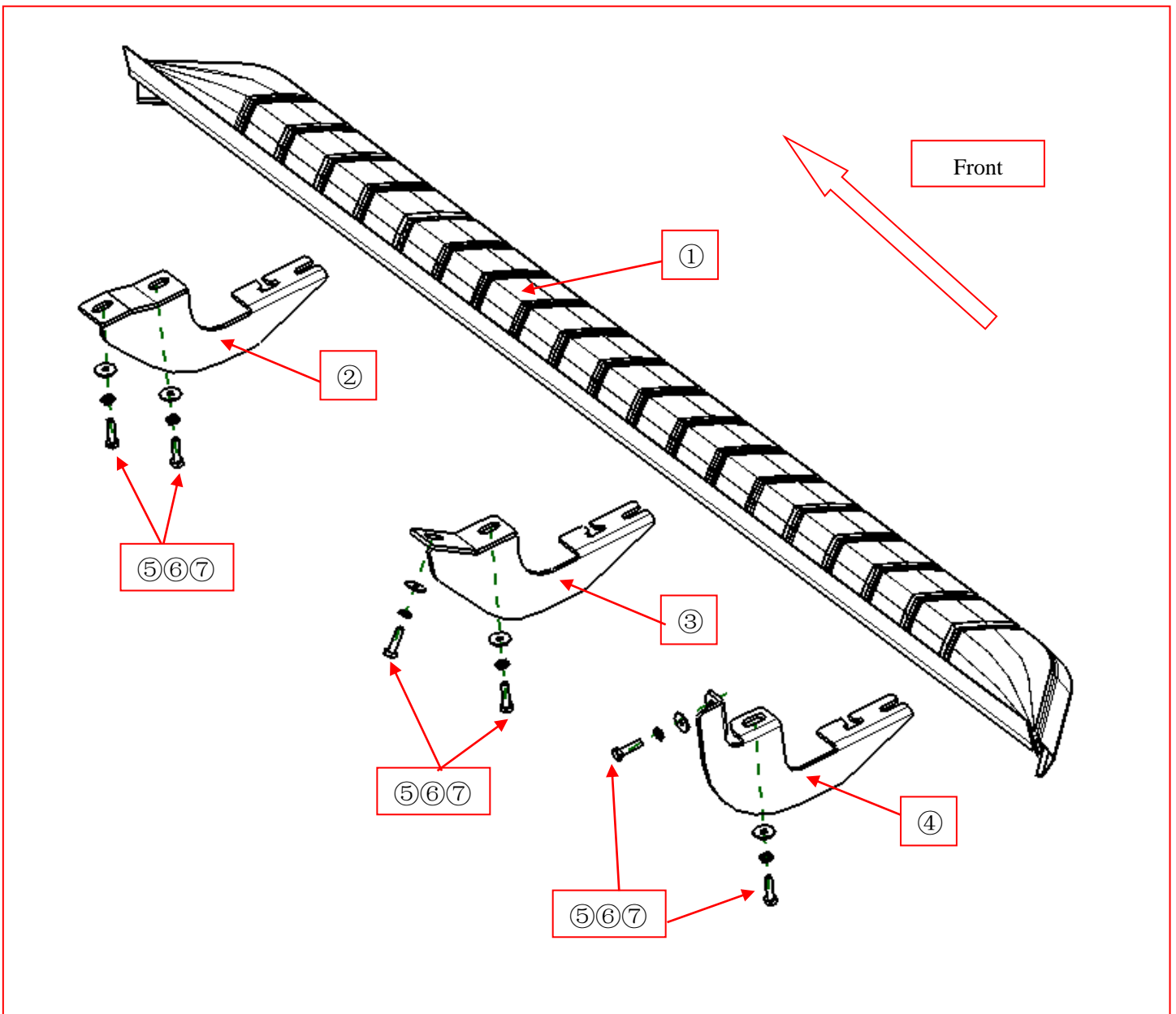
- Please read this installation menu before installing this part. Protect your car properly in case there is any scratch might have.
- You may need to periodically to re-tighten all hardware for safety use after installation.
- Installation pictures are only for your reference, there might be some differences between pictures and real parts but no affect for your fitting.

PART LIST

NO.	NAME	QTY	REMARK	NO.	NAME	QTY	REMARK
①	F1 Running Board	2	70 inch	⑤	Hexagon Head Bolt	12	M8X30
②	Front Bracket	2		⑥	Spring Washer	12	Φ8
③	Middle Bracket	2		⑦	Large Washer	12	Φ8X25X2.0
④	Rear Bracket	2					

Note: It is the same way to install both sides.

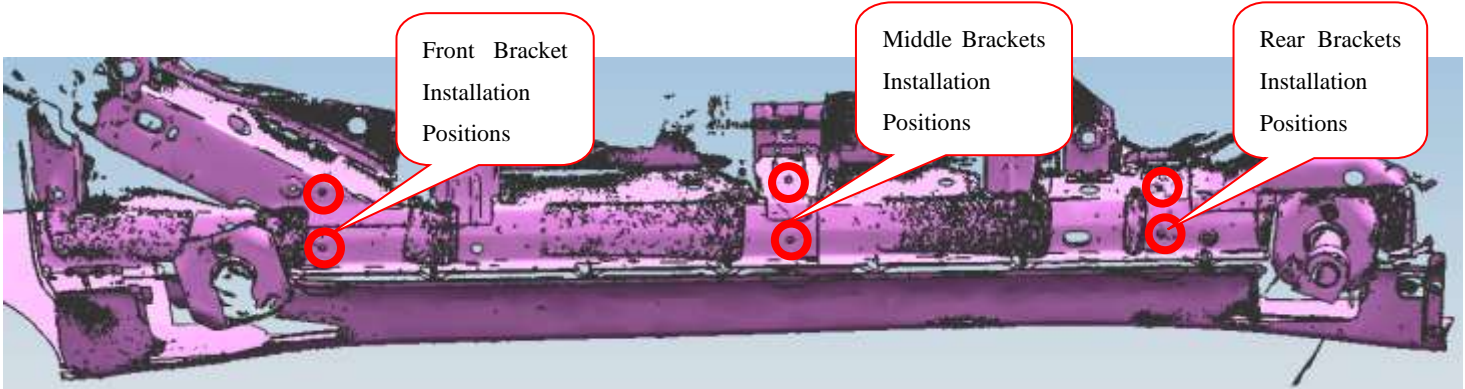
INSTALLATION PICTURE



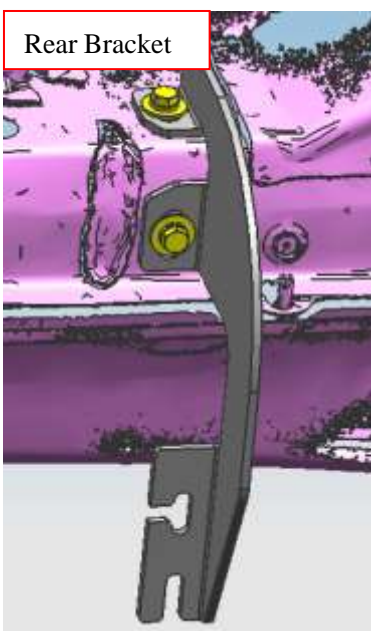
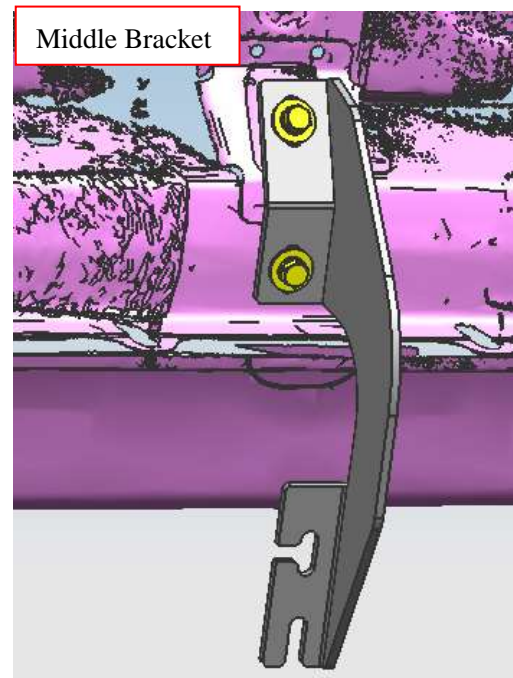
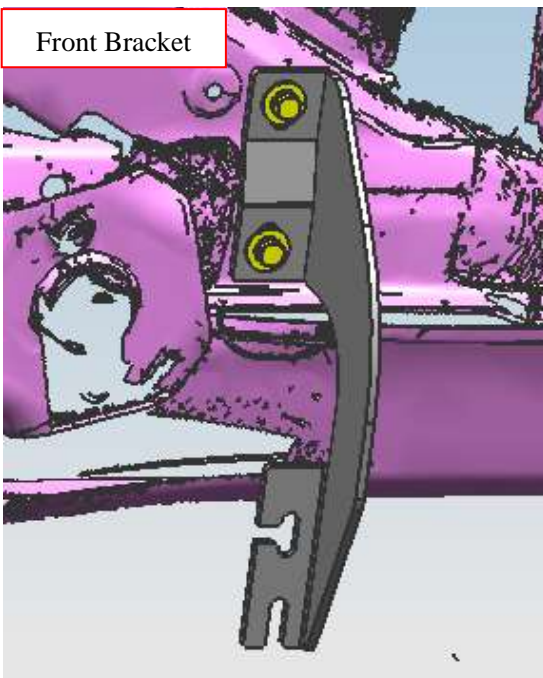
INSTALLATION PROCEDURES

Step 1: Refer to Part List and Installation Picture to check if all hard ware are included.

Step 2: Refer to the following picture to install front, middle and rear brackets.



Step 3: Install the side bar on the brackets and then adjust the side bar to the proper positions.



Step 5: Check if all hard ware are installed and then tighten up to complete the installation.

Disclaimer: Caused due to improper installation initiates some related problem and losses, are beyond our company's quality assurance.