

# **INSTALLATION INSTRUCTION**

**EXCEED Running Boards**

**11-20 VW Tiguan**

**Part # EX-W1069**



**BLACK HORSE  
OFF ROAD**

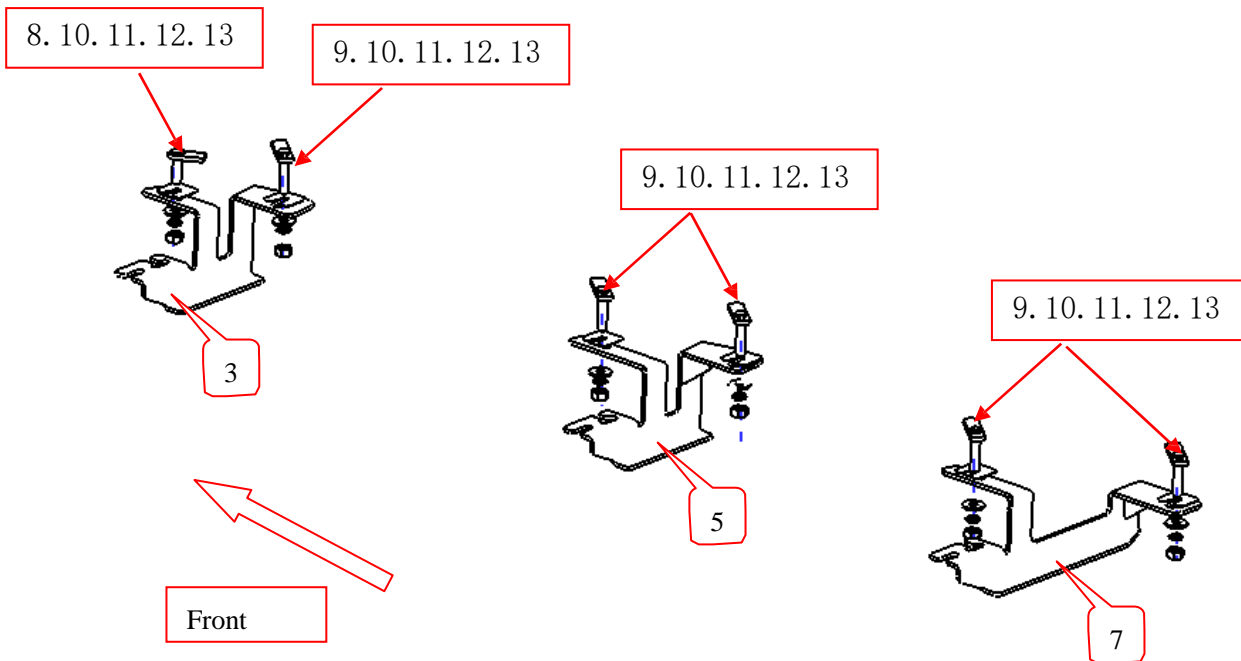
**Attention:**

- Please read this installation menu before installing this part. Protect your car properly in case there is any scratch might happen.
- You may need to periodically to re-tighten all hardware for safety use after installation.
- Installation pictures are only for your reference, there might be some differences between pictures and real parts but no effect for your fitting.

**PART LIST**

NO.	NAME	QTY	REMARK	NO.	NAME	QTY	REMARK
1	F1 running board	1	70inch	8	T-Bolt 3	2	M10X35
2	Front Bracket (right)	1		9	T-Bolt 1	10	M10X50
3	Front Bracket (left)	1		10	PVC Fixture	12	Φ 10
4	Middle Bracket (right)	1		11	Large Washer	12	Φ 10x25x2.5
5	Middle Bracket (left)	1		12	Spring Washer	12	Φ 10
6	Rear Bracket (right)	1		13	Hexagon Nut	12	M10
7	Rear Bracket (left)	1					

**INSTALLATION PICTURE**

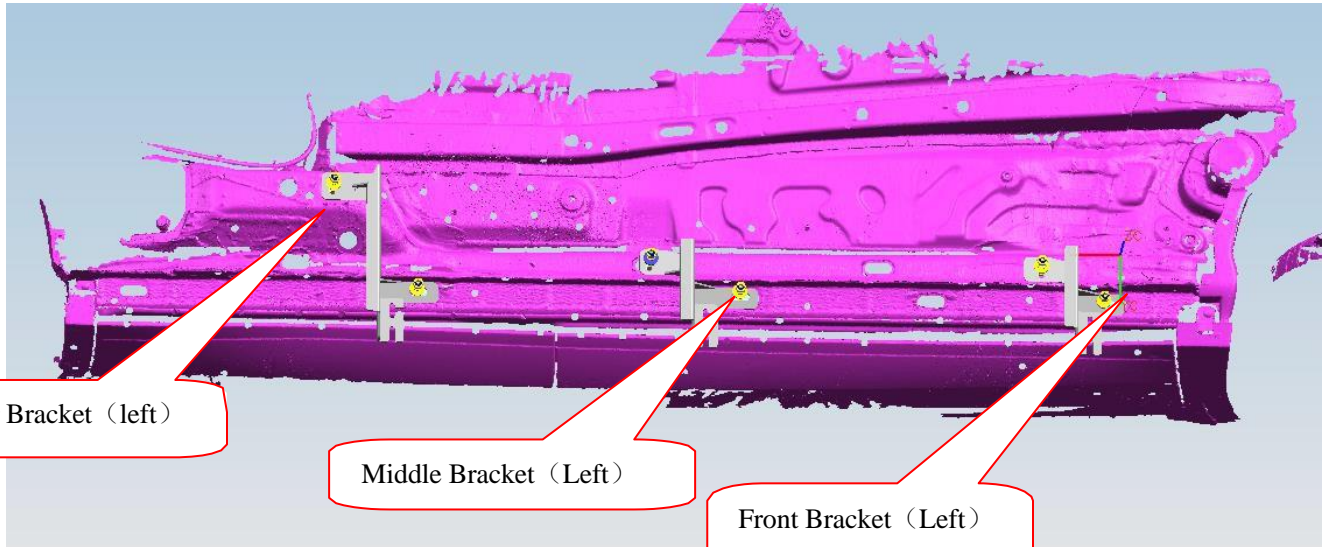
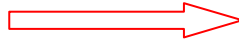


# Installation Steps

Step 1: Refer to Part List to check if all hard ware are included.

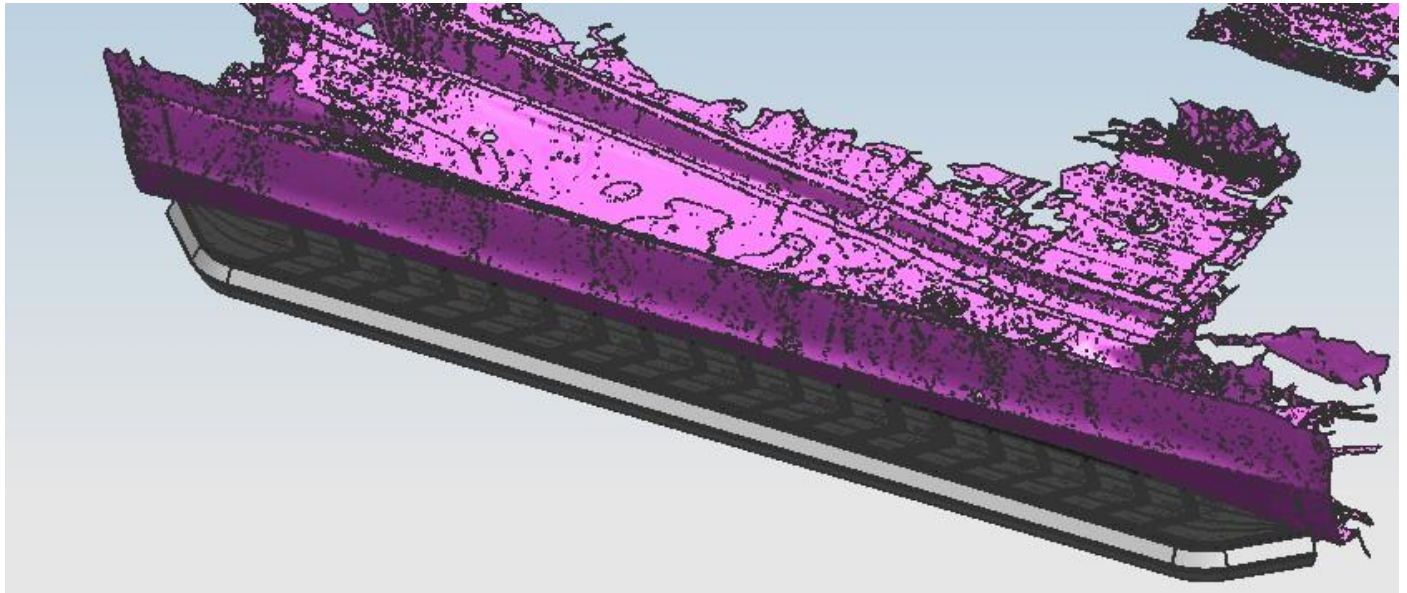
Step 2: Refer to the following picture to install the brackets.

Front direction



Step 3: Install the side bar on the brackets and then adjust them to the proper positions.

Step 4: Check if all hard ware are installed and then fasten all to complete the installation.



Disclaimer: Caused due to improper installation initiates or some related problem and losses, are beyond our company's quality assurance.