

# INSTALLATION INSTRUCTION

## Running Boards Brackets

2015	2018	Lexus	NX200T
2019	2021	Lexus	NX300

2015	2021	Lexus	NX300h
------	------	-------	--------

PART # PILX67



BLACK HORSE  
OFF ROAD

- **866-926-2867**
- Email: [info@blackhorseoffroad.com](mailto:info@blackhorseoffroad.com)
- Mon-Fri 9AM-6PM EST
- **Headquarters**
- 39 ST. MARY'S PLACE FREEPORT, NY 11520

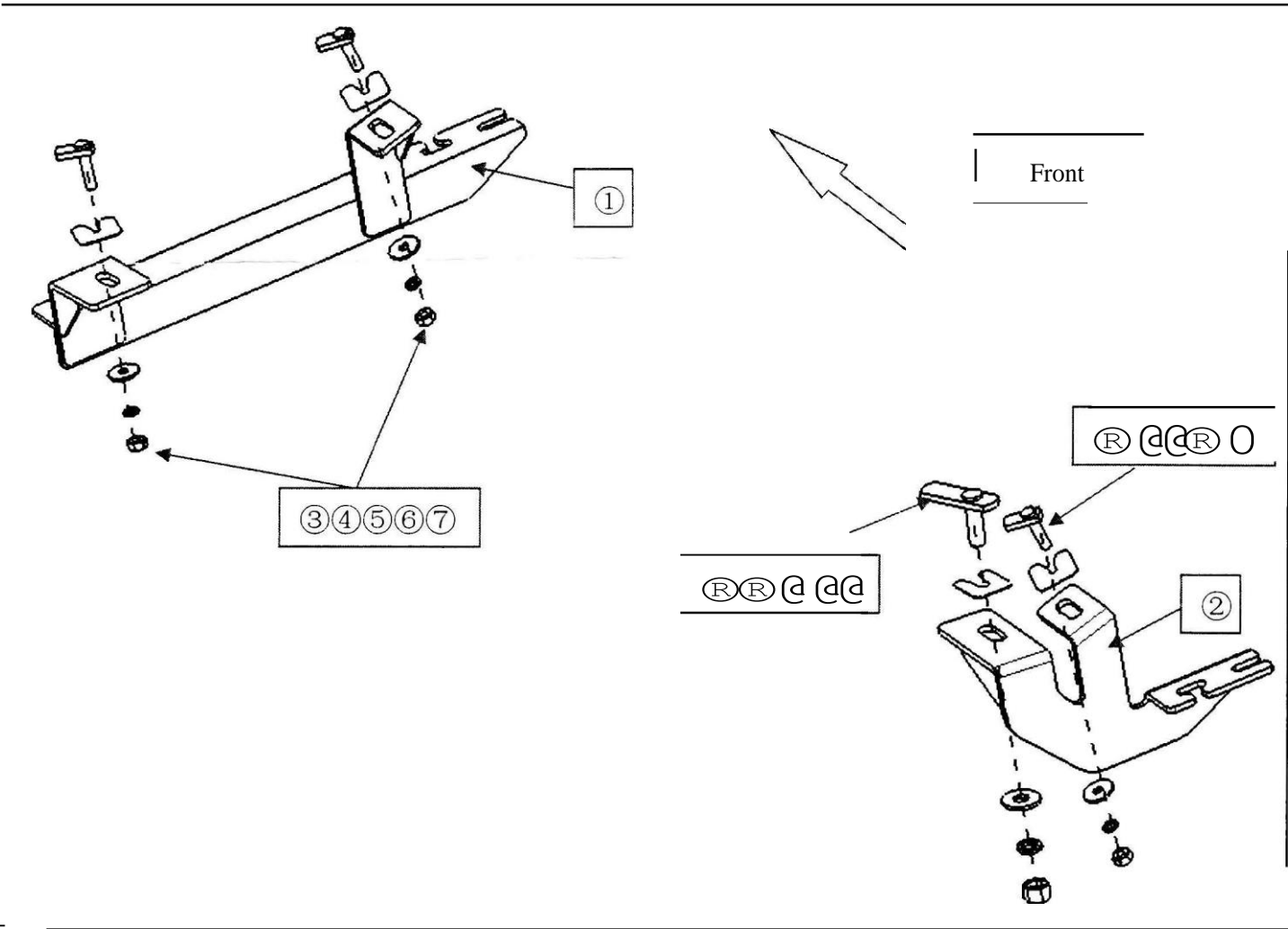
- Attention:
- Please read this i nstallation menu before installing this part. Protect your car properly in case there is any scratch might happen.
  - You may need to periodically to re-tighten all hardware for safety use after installation.
  - Instalation pictures are only for your reference, there might be some differences between pictures and real parts but no effect for your fitting.

PART LIST

NO.	NAME	QTY	REMARK	NO.	NAME	QTY	REMARK
CD	Front Bracket	2		O	Hexagon Nut	6	M8
@	Rear Bracket	2		Ⓡ	T Bolt 2	2	67 *M12*40
Ⓡ	T Bolt 1	6	30*M8*40	Ⓡ	PVC Fixture	2	cp12 x 2
@	PVC Fixture	6	cp8 x 6	@)	Large Washer	2	cp12x30x3.0
@	Large Washer	6	cp8x25x2.0	Ⓡ	Spring Washer	2	cp12
Ⓡ	Spring Washer	6	cp8	@	Hexagon Nut	2	M12

Note: It is the same way to install both sides.

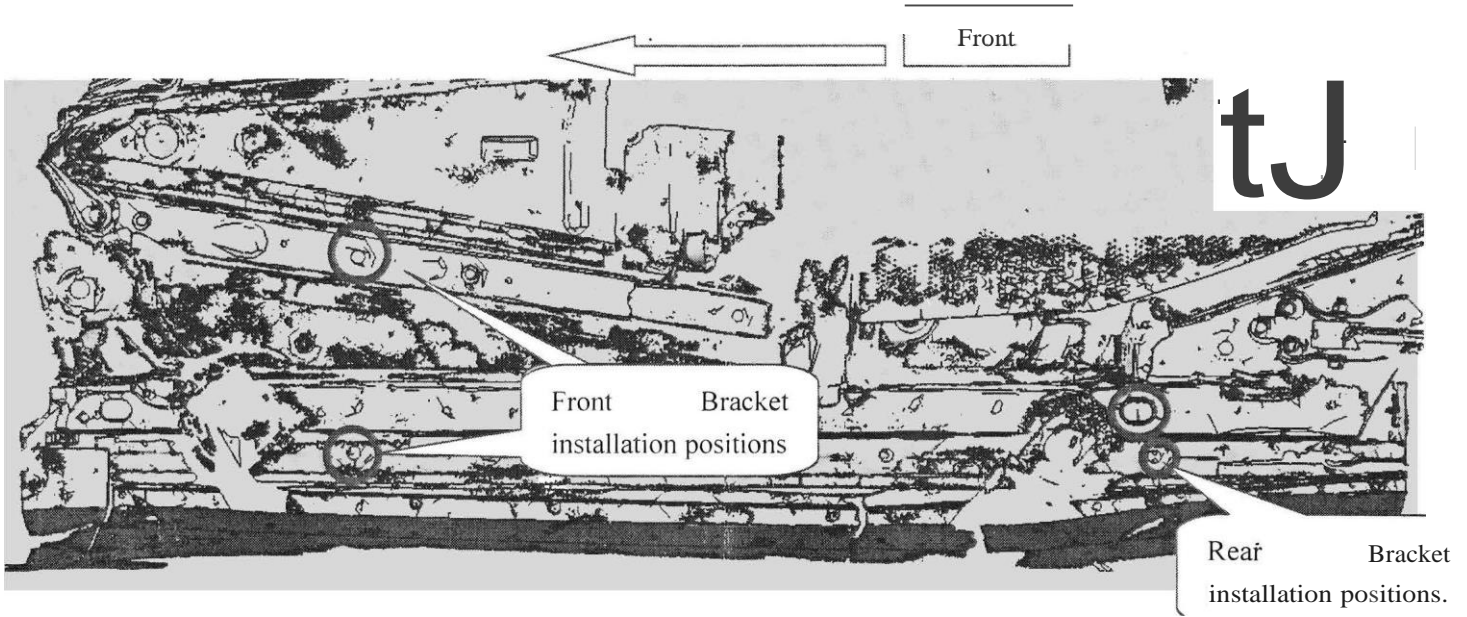
INSTALLATION PICTURE



# INSTALLATION PROCEDURES

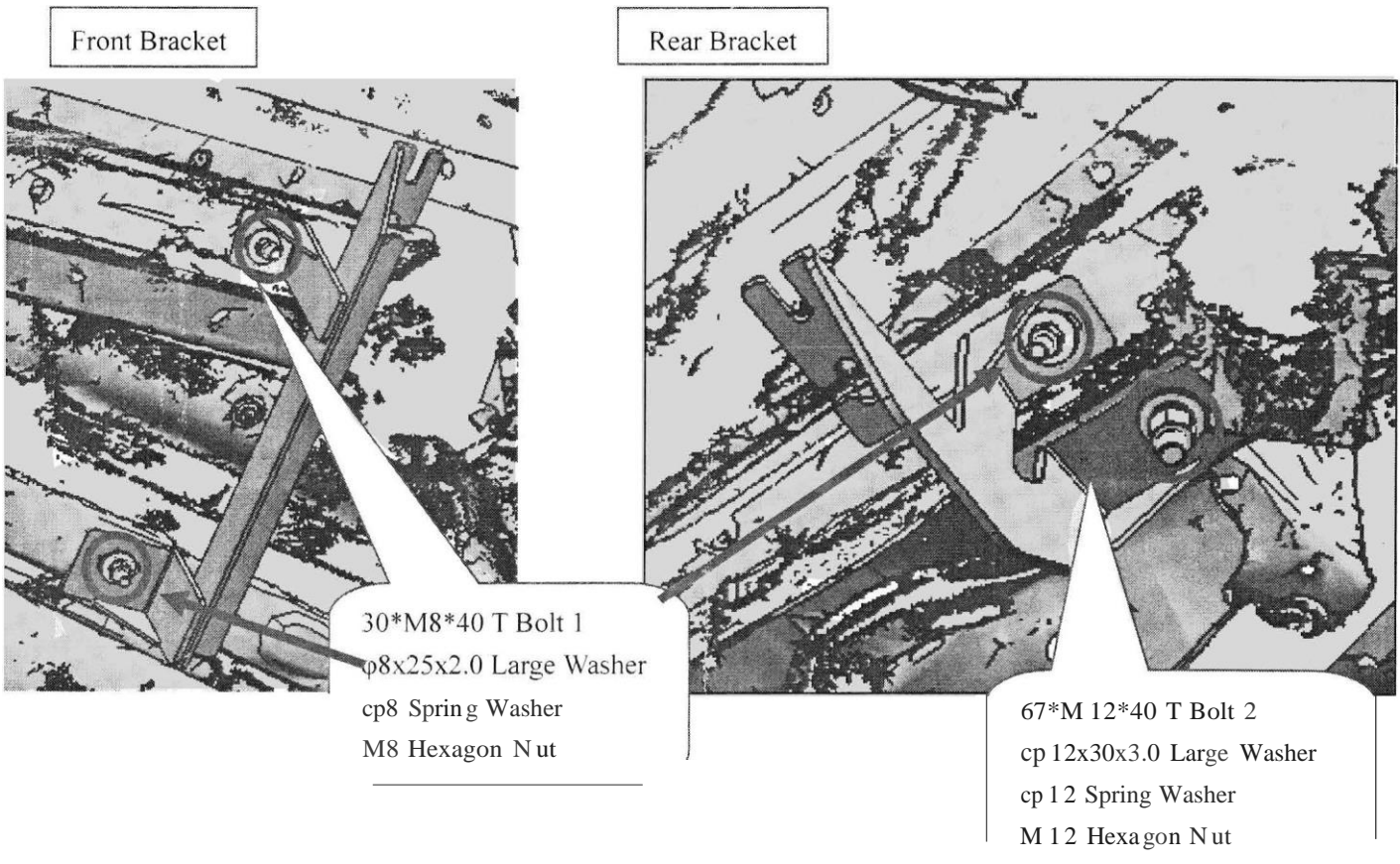
Step 1: Refer to Part List and Installation Picture to check if all hardware are included.

Step 2: Refer to the following picture to install the front and rear brackets.



Step 3: Install the brackets on the relevant positions but do not fasten.

Step 4: Install the running board on the brackets and then adjust them to the proper positions.



Step 4: Check if all hardware are installed and then fasten all to complete the installation.

Disclaimer: Caused due to improper installation initiates some related problem and losses. are beyond our company's quality assurance.