



INSTALLATION INSTRUCTIONS
PREMIUM RUNNING BOARD FOR HONDA ODYSSEY 18-21
PART # PR-H1882

Before Installation

- Please read the instruction completely for easy installation, which will also help you to avoid scratches or other potential damages to your appealing car.
- The figures here are for reference only and may have differences with the actual product you received, however they share the same assembly way.

Care and Cleaning

- Mild soap may be used also to clean the Product.
- Please periodically check and retighten all the hardware and clean the investment for a refresh look.

Parts list

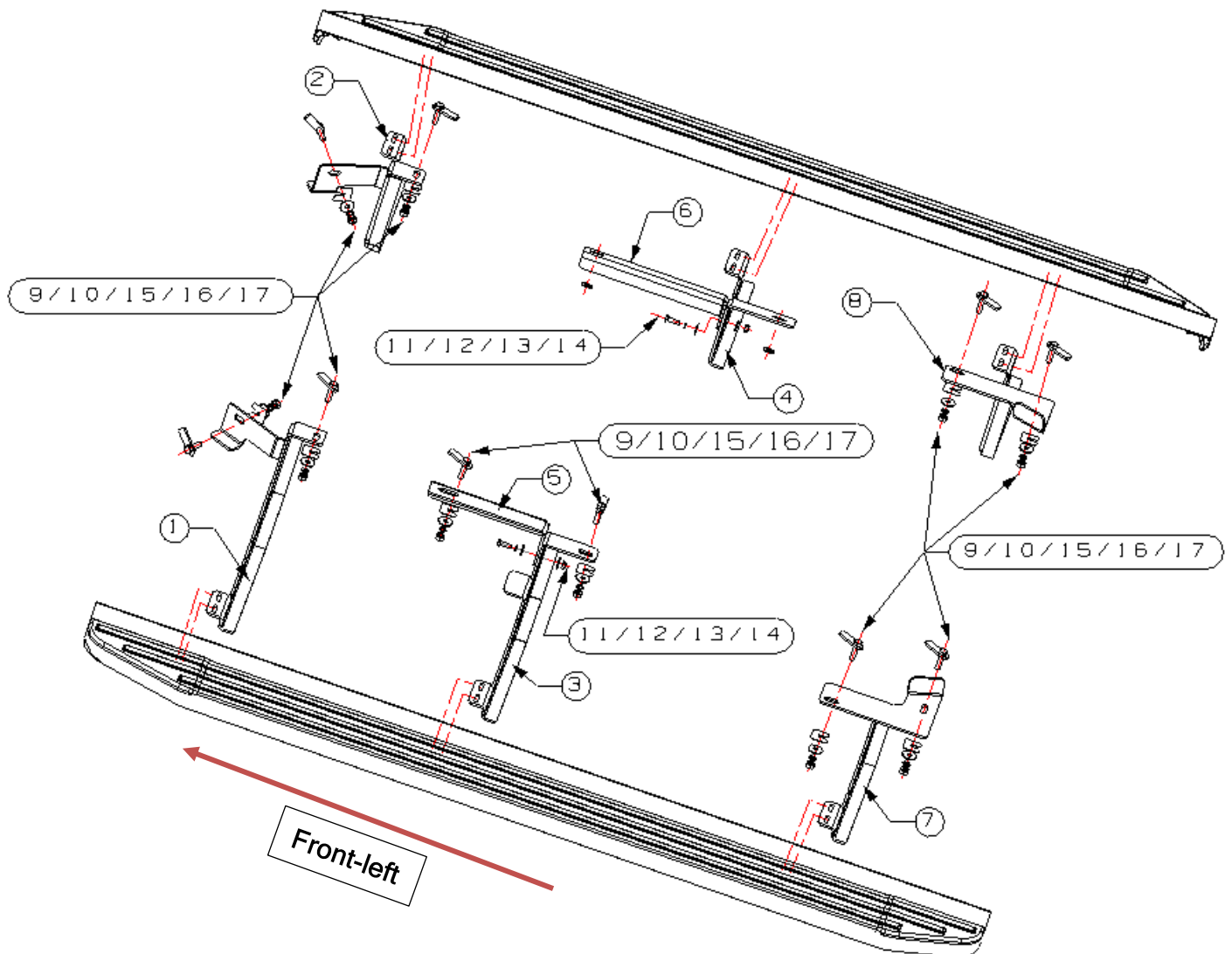
NO.	QTY	PIC	NO.	QTY	PIC
①	1	Front bracket (L)	②	1	Front bracket (R)
③	1	Middle bracket (L)	④	1	Middle bracket (R)
⑤	1	Middle mounting bracket (L)	⑥	1	Middle mounting bracket (R)
⑦	1	Rear bracket (L)	⑧	1	Rear bracket (R)
⑨	10	T Bolt M10	⑩	10	M10 Plastic block

Standard parts:

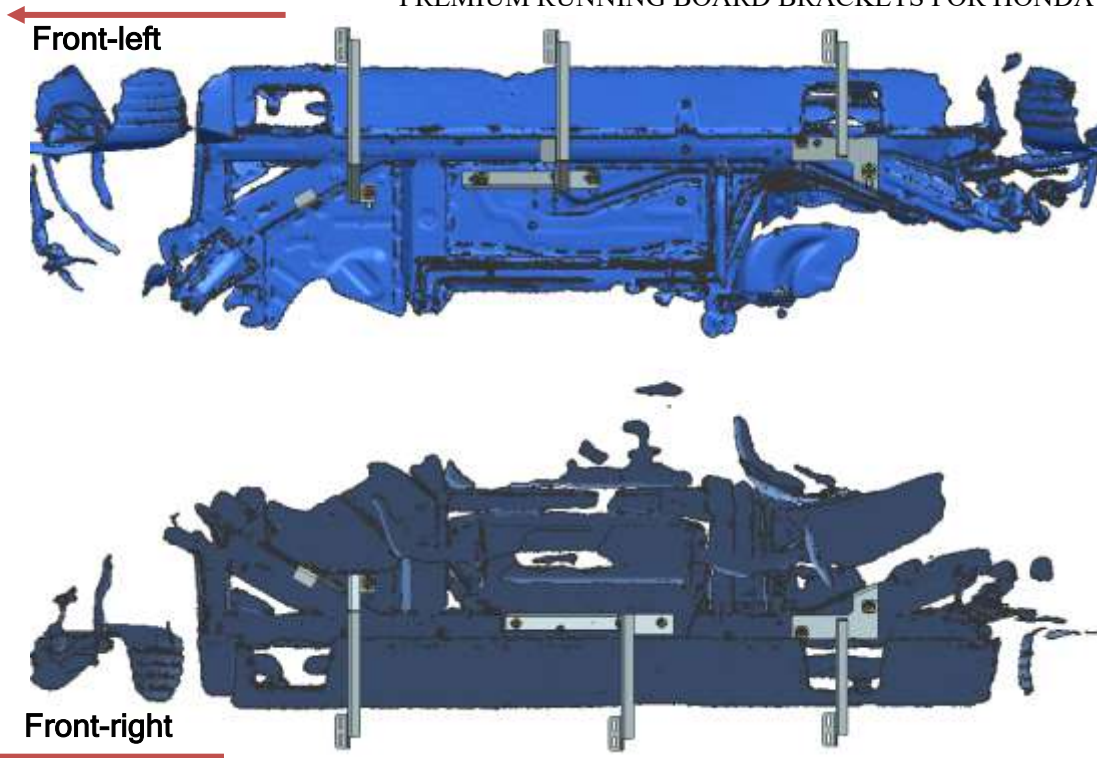
⑪	2	Lock washer D8	⑮	10	Lock washer D10
⑫	6	Flat washer D8	⑯	10	Flat washer D10
⑬	2	Hex nut M8	⑰	10	Hex nut M10
⑭	2	Hex bolt M8_25			

Installation Steps

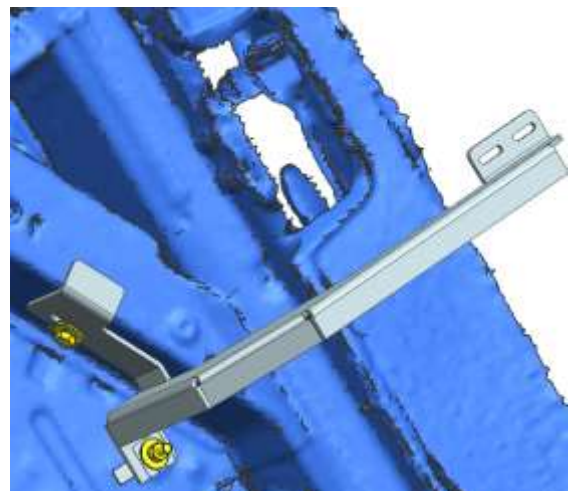
INSTALLING PICTURE:



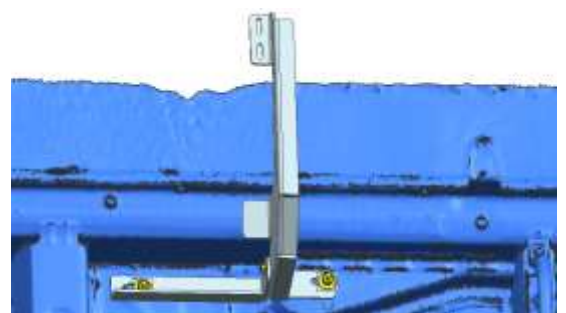
Step 1: Preview the approximate position of the body scan data and bracket in the picture below, and then install the brackets according to the actual car picture.



The installation of the front bracket (L) is as follows: (see the INSTALLING PICTURE for the optional standard parts). The left and right installation methods are the same.



The installation of the middle bracket (L) is as follows: (see the INSTALLING PICTURE for the optional standard parts).



The installation of the middle bracket (R) is as follows: (see the INSTALLING PICTURE for the optional standard parts).



The installation of the rear bracket (L) is as follows: (see the INSTALLING PICTURE for the optional standard parts). The left and right installation methods are the same.



Step 2: The overall effect after installation is shown in the figure below.



Step 3: Installation is finished, pick up all tools.

NOTE

Any damages and losses caused by improper installation and application, goes beyond our quality warranty.