



# **INSTALLATION INSTRUCTIONS**

**PREMIUM RUNNING BOARD**

**FOR NISSAN FRONTIER CREW CAB 05-20**

**PART # PR-NIFRCC**

## Before Installation

- Please carefully read the instructions for easy installation, which will help to prevent any damage to your vehicle.
- The information shown here is for reference only and may differ from the product that you receive, however the goods are fitted in the same way.

## Care and Cleaning

- Mild soap may be used also to clean the Product.
- Please periodically check and retighten all the hardware and clean the investment for a refresh look.
- **To protect your investment, wax this product after installing. Regular waxing is recommended to add a protective layer over the finish. Do not use any type of polish or wax that may contain abrasives that could damage the finish.**

## Tools required



Spanner  
10 Head



Spanner  
13 Head

## Parts list

<b>1</b>  <b>Left Running Board</b> 1x	<b>2</b>  <b>Right Running Board</b> 1x
<b>3</b>  <b>Mounting Brackets</b> 6x	<b>4</b>  <b>8mm x 24mm x 2mm Flat Washers</b> 12x
<b>5</b>  <b>8mm Lock Washers</b> 12x	<b>6</b>  <b>8mm Hex Nuts</b> 12x
<b>7</b>  <b>6mm T-Bolts</b> 12x	<b>8</b>  <b>6mm x 22mm OD x 2mm Large Flat Washers</b> 12x
<b>9</b>  <b>6mm Lock Washers</b> 12x	<b>10</b>  <b>6mm Hex Nuts</b> 12x

1. REMOVE CONTENTS FROM BOX AND VERIFY THAT ALL PARTS ARE PRESENT. READ THE INSTRUCTIONS CAREFULLY. PLEASE NOTE: 120KG IS THE MAXIMUM RATED LOAD FOR THE SIDE STEPS.

This fitting instruction is for UK MODELS and board design for illustration purposes only. It will take around 2 hours to fit the running boards.



2. Locate the threaded studs on the inner body panel, **(Image 1)**. Select 1 Mounting Bracket and hang it from the front mounting location, **(Image 2 & 3)**. Secure it with the included 2x 8mm Flat Washers, 2x 8mm Lock Washers and 2x 8mm Hex Nuts. Snug hardware but do not tighten at this time.
3. Repeat **Step 2** for the left side Center and Rear Mounting Bracket installation, **(Image 2 & 3)**.
4. Select the left side Running Board. Locate the openings cut at the end of the slots on the bottom of the Running Board, **(Image 4)**. Insert 3x6mm T-Bolts into each channel through the openings. Slide the T-Bolts into the approximate position in line with the 3 Brackets.



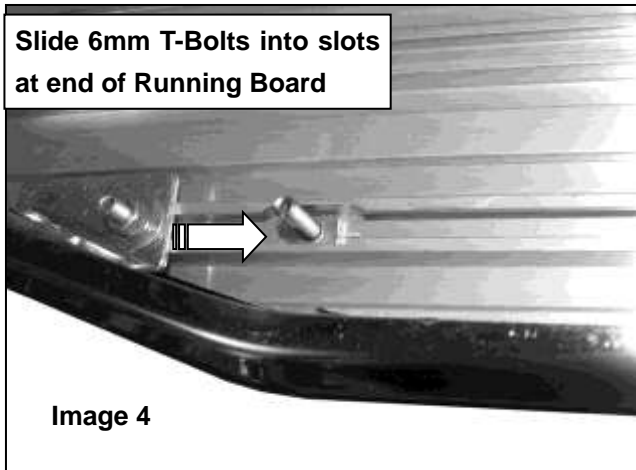
(2) 8mm Flat Washers  
(2) 8mm Lock Washers  
(2) 8mm Hex Nuts

Image 3



Slide 6mm T-Bolts into slots  
at end of Running Board

Image 4



5. Carefully place the Running Board in position on top of the Brackets. Slide the T-Bolts forward or back until they line up and drop into the slots on the Brackets. Secure the Running Board to the Brackets with 6x 6mm Flat Washers, 6x6mm Lock Washers and 6x 6mm Hex Nuts, **(Image 5)**. Do not tighten hardware at this time.
6. Adjust and level the Running Board and tighten all hardware.
7. Repeat **Steps 2 - 6** for the other side of Running Board installation
8. Do periodic inspections to the installation to make sure that all hardware is secure and tight.

(2) 6mm T-Bolts  
(2) 6mm Flat Washers  
(2) 6mm Lock Washers  
(2) 6mm Hex Nuts

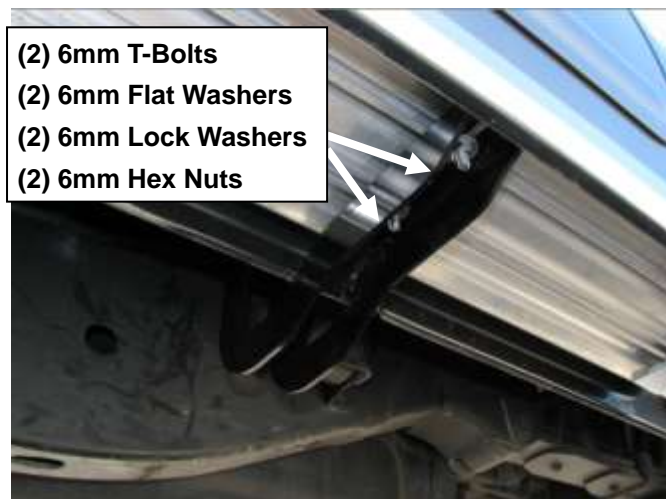
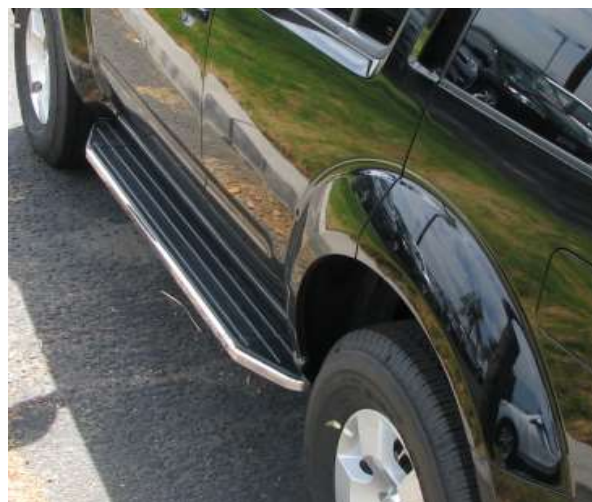


Image 5



Complete Installation

**Do periodic inspections to the installation to make sure that all hardware is secure and tight. Any damages and losses caused by improper installation and application, goes beyond our quality warranty.**