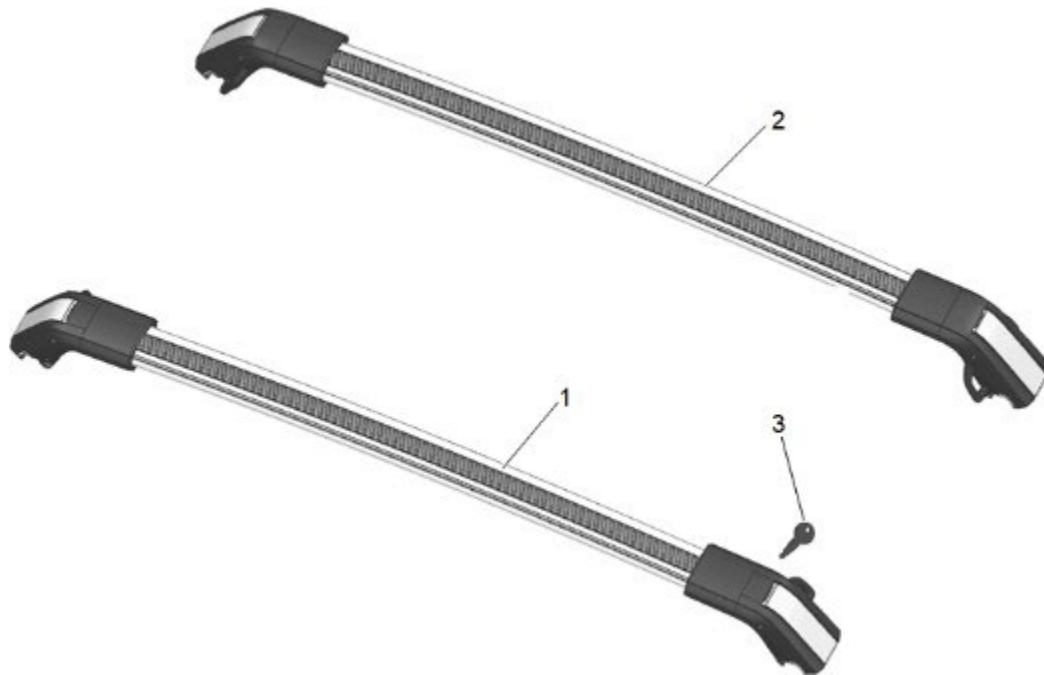




OEM Replica Cross Bar Installation Instructions

Installation Instructions Part Number TR-GM210E



Kit Contents

Item	Qty	Description
1	1	FRONT CROSS BAR
2	1	REAR CROSS BAR

Item	Qty	Description
3	2	KEYS
-	1	Installation Instructions

Additional Tools Required

Measuring Tape (not provided)

Suitable Flat-Bladed Tool

WARNING/LIMITATION:

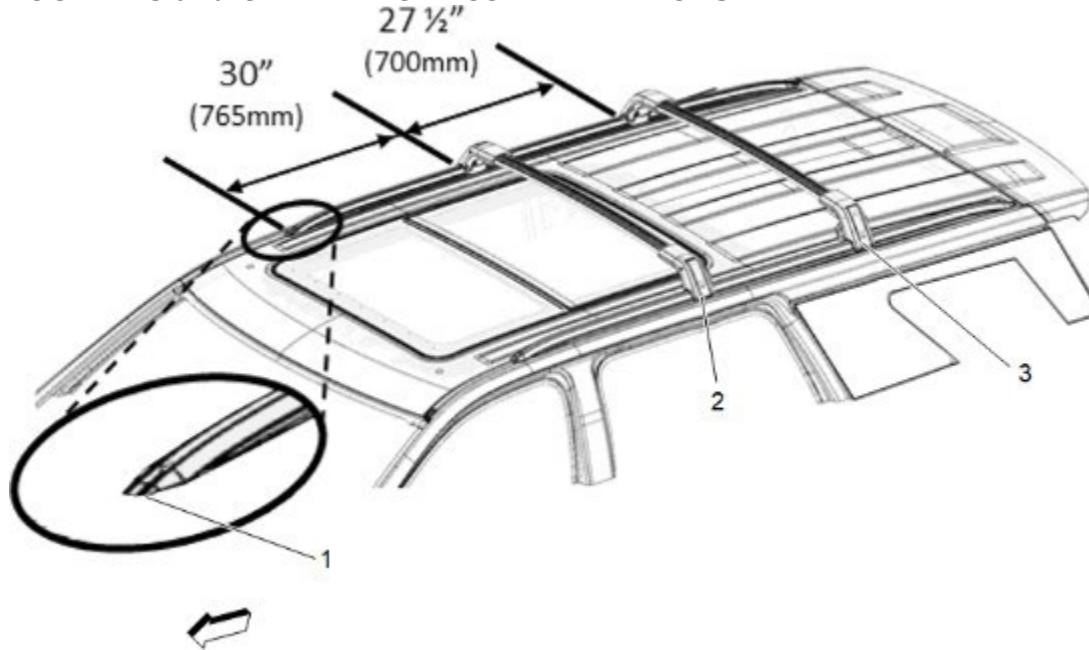
The weight of the cross bar rack system together with the load you place on them must not exceed the maximum weight limitation of 220 lbs. (100kg).

Warning: Keep the installation instructions with the Owner's Manual. Do not discard it.

Warning: Cross bar rack systems are specifically designed for certain vehicles. Do not attempt to put these cross bars onto a different vehicle or model year.

Caution: Before installing cross bars on vehicle, make sure the side rails on your vehicle are clean to prevent dirt from damaging the appearance of the side rails.

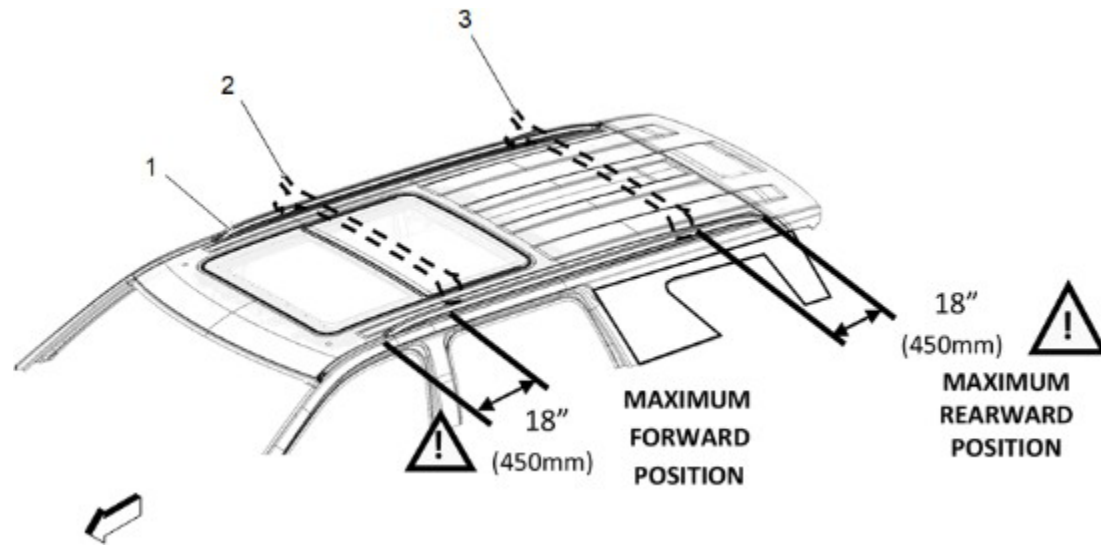
LOCATING and ORIENTING RECOMMENDATIONS



1. This cross bar system is adjustable, allowing it to slide along the side rails to various positions for customer convenience depending on the length of the loads being carried.

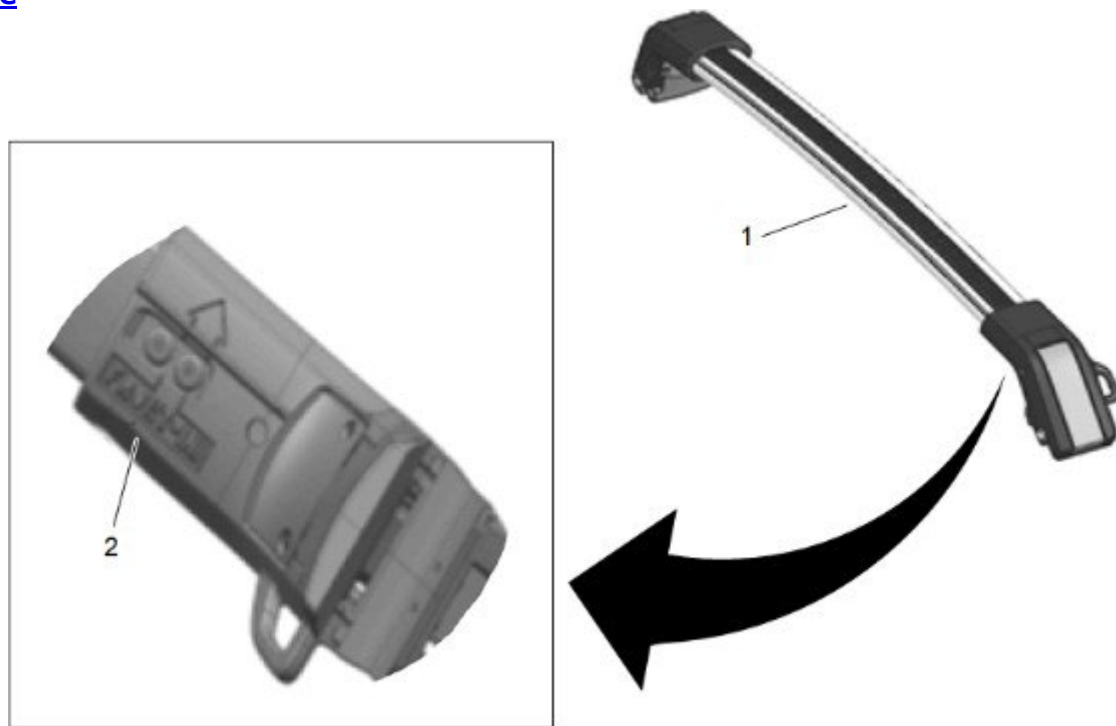
Note: MANY AFTER MARKET ACCESSORIES USE 27.5in (700mm) BETWEEN CROSS BARS.

2. When cargo boxes are installed onto the cross bars, it is recommended to place the front cross bar (2) near the rear edge of the sunroof, 30in (765mm) from the front end of the side rail (1), as shown. Then place the rear cross bar (3) 27.5in (700mm) rearward from front cross bar position.

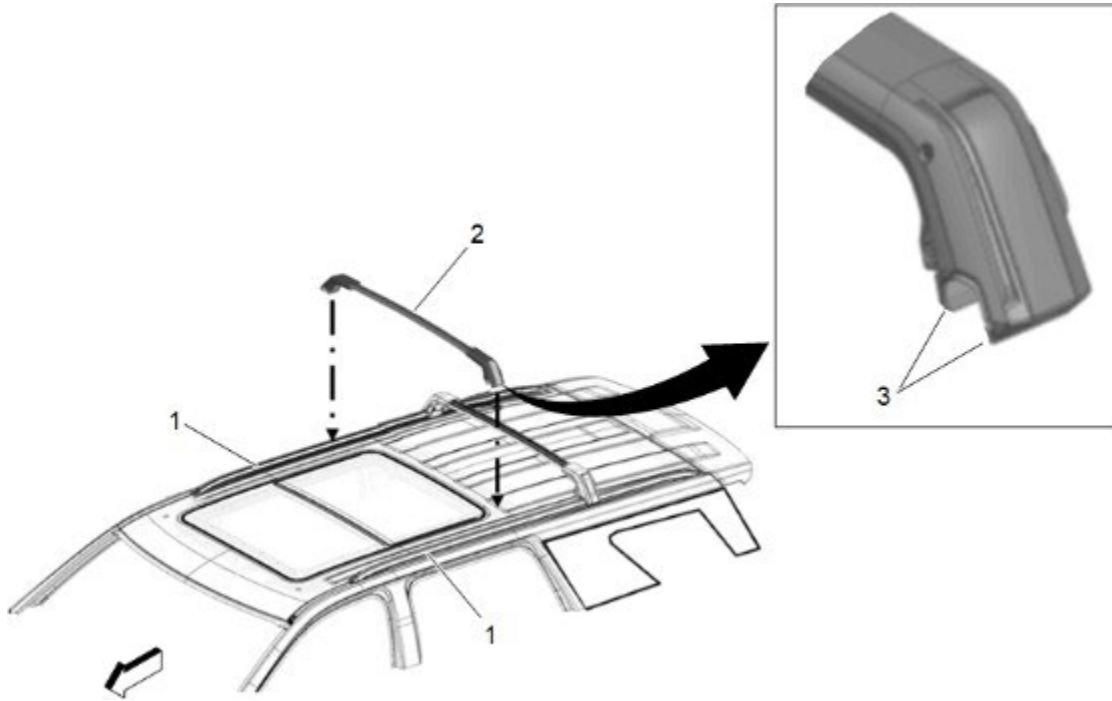


3. When installing cross bars, front (2) and rear (3) it is recommended to stay a minimum distance of 18 in. away from either end of the side rail (1) for best performance and clearance.

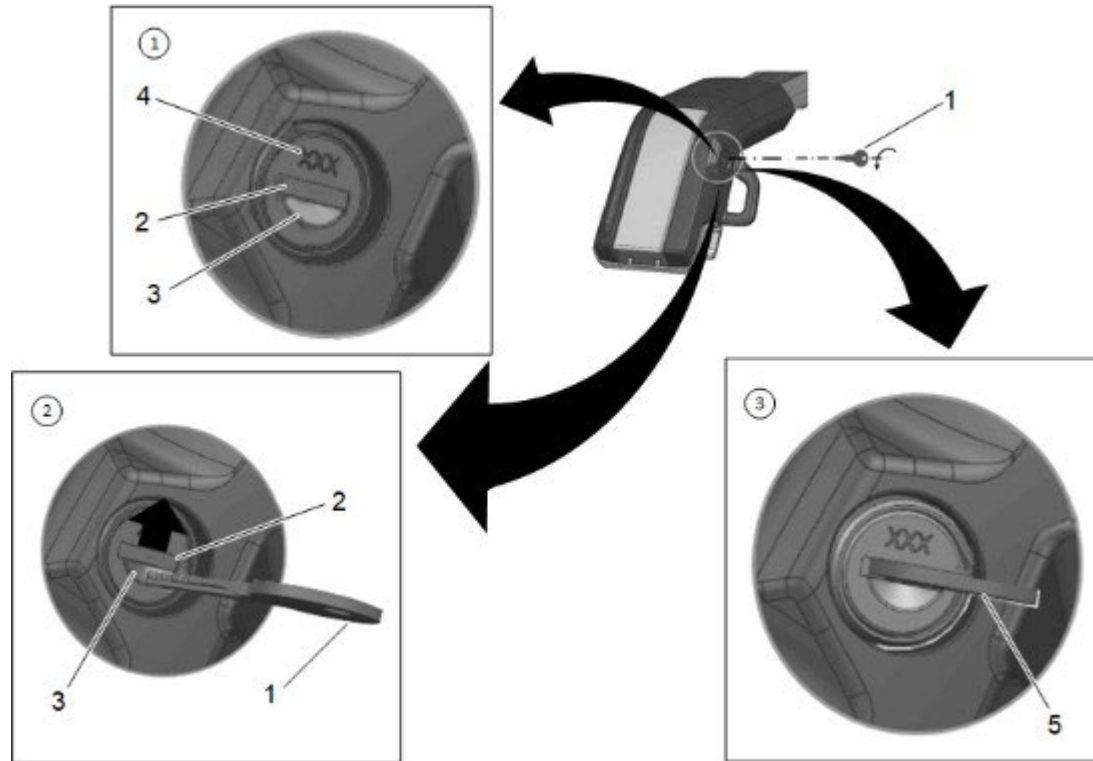
Procedure



1. Start the installation by bringing the front and rear cross bars on the left side of vehicle (driver's side).
2. The cross bars (1) are identified on their bottom side (2), by the word "**FRONT**" for the front cross bar and "**REAR**" for the rear cross bar. They also show an arrow that should point towards the front of the vehicle once installed.

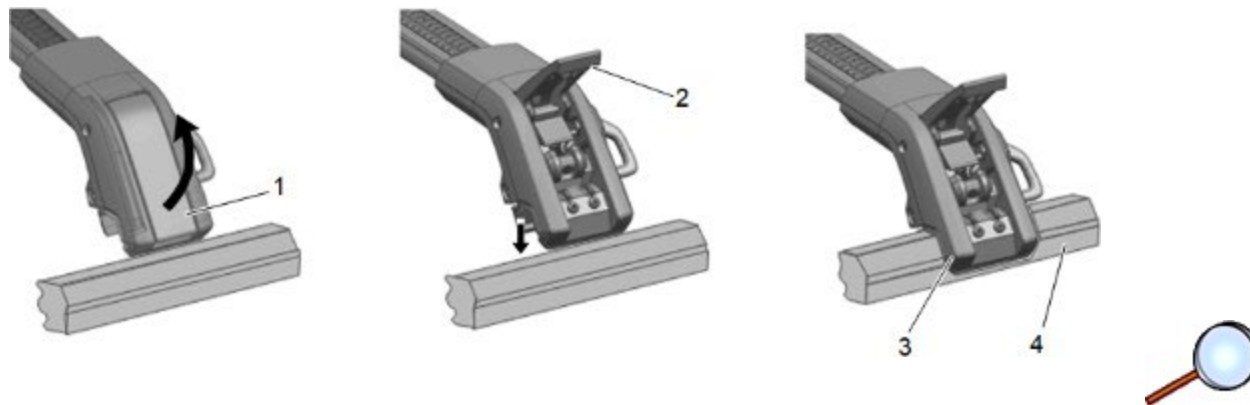


3. Gently place the front and rear cross bars (2) onto the roof side rails (1), with rubber pads (3) facing downward. [See "LOCATING and ORIENTING RECOMMENDATIONS" regarding placement]



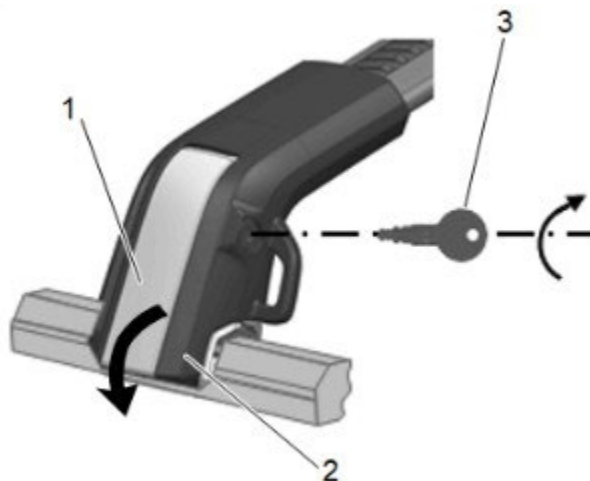
Note: The kit comes with two keys. Additional keys are available through dealerships by providing the key cylinder three-digit code (4) located on the lock face.

4. Still on the left side of the vehicle, unlock the left side lever on the front cross bar. The lever is unlocked by first inserting key (1) tip on indent (3) of lock face, then pushing the dust shutter (2) out of the way, and finally rotating the key (5).



Note: The lever cannot be opened until the key is inserted and rotated to the unlock position. Once unlocked, the key must stay in the key cylinder until installation procedure is complete for that side. The key cannot be removed until the lever is closed, and the key is in the locked position.

5. With the key in the lock cylinder and rotated to the unlock position, lift the lever (1) to its full open position (2) to open the clamping jaw and then place the cross bar (3) down onto the side rail (4). Make sure the cross bar clamping jaw is fully seated down on the side rail.

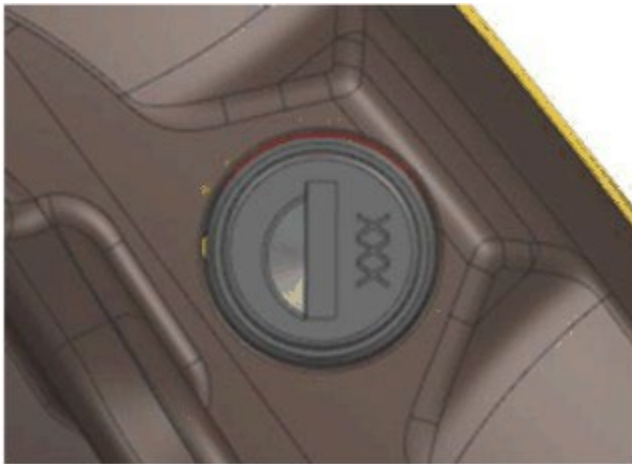


Note: This installation requires 2 people for proper installation to avoid vehicle damage.

6. Once the cross bar is in the installed position, fully close the lever (1) down to clamp the side rail (2). Rotate the key (3) to the locked position and remove the key. The key cannot be rotated and removed until the cross bar is correctly positioned on the side rail and the lever is fully closed.
- 6.1. Once inserted, the key cannot be removed until the lever is in the closed position and the key is in the locked position.



- Left Hand Side Locked Position



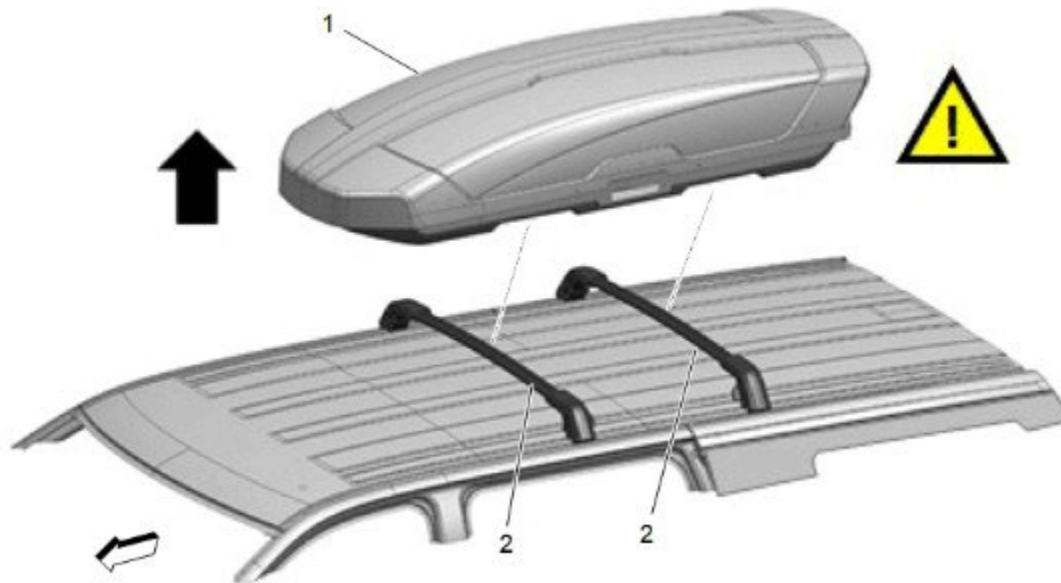
- Right Hand Side Locked Position

7. Repeat steps 4, 5 and 6 for the rear cross bar (make sure to start on the left hand side of the vehicle). Remember that the arrow underneath must point to the front of the vehicle (see step 2).
8. Walk to the right hand side of vehicle, and follow steps 9-11 for each cross bar.
9. Unlock the cross bar with your key and open the lever.



10. Adjust the width of each of the cross bar on the right side of the vehicle. First grasp the bar (1), then pull on the support (3) to increase the length, or push support (2) to decrease length. While adjusting the length of the cross bar, slowly push the cross bar down onto the side rail.
11. Push the lever down to clamp the side rail. Lock the supports and remove your key.
12. Store your keys where you can find them easily (i.e. key ring, glove box, etc.).

RE-POSITIONING / REMOVAL

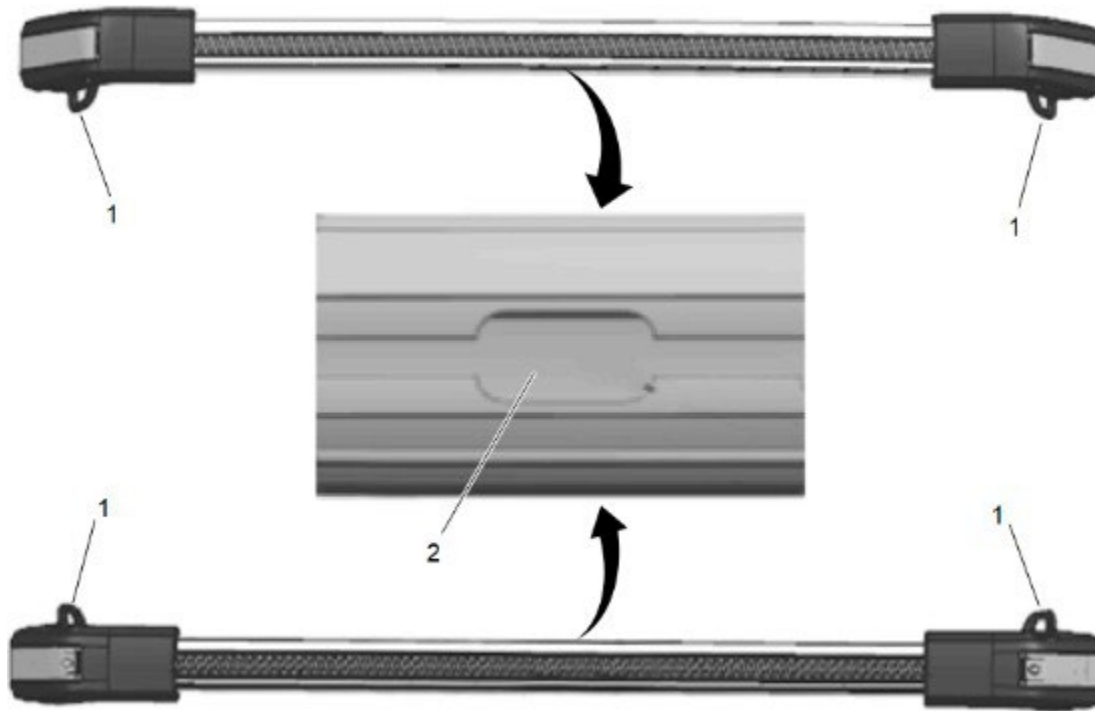


Note: Once your cross bar system has already been installed, you can easily re-position the cross bars.

1. First, remove any load (1) (weight) on top of the cross bars (2).
2. Unlock the supports of the cross bars that you want to move, and open the levers.
3. You can then remove the cross bars, and put it back onto the side rail in a new location.

Note: IF YOU REMOVE YOUR CROSS BAR SYSTEM, AND YOU FIND THAT THE SIDE RAIL UNDERNEATH APPEARS SMUDGED, YOU CAN CLEAN IT WITH EITHER A DRY NAPKIN, OR A NAPKIN MOISTENED WITH RUBBING ALCOHOL (~90% ISOPROPYL ALCOHOL).

4. Once all adjustments are complete, use your key to unlock each lever so that you may close each lever. Removing your key when the levers are closed will lock each of them.



Note: THE CROSS BAR SYSTEM COMES WITH TIE DOWN LOOPS (1) THAT CAN ACCOMMODATE ROPE UP TO ½ INCH (13mm) IN DIAMETER.

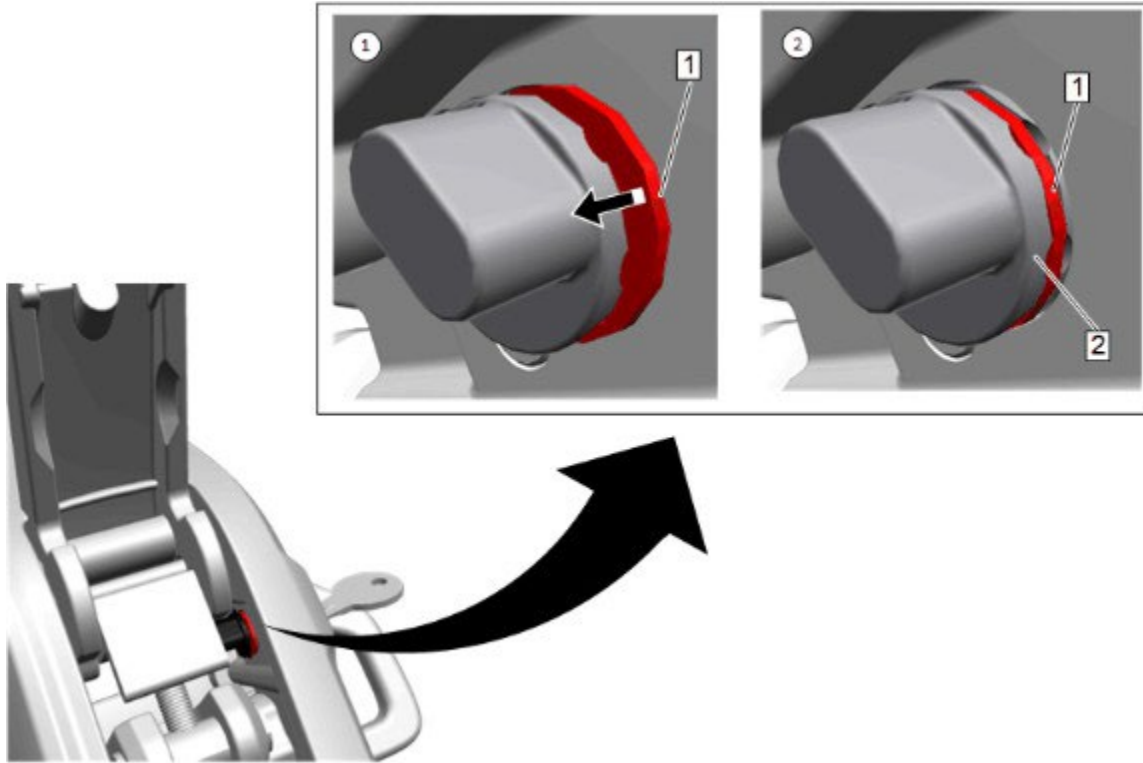
Note: SOME ACCESSORIES MAKE USE OF T-NUTS MADE TO SLIDE INSIDE OF THE CROSS BAR. IF YOUR ACCESSORY CALLS THIS OUT, YOU CAN FIND THE ACCESS SLOT (2) UNDERNEATH THE RUBBER BUMPER STRIP.

[Cross Bar Lock Cylinder Service](#)

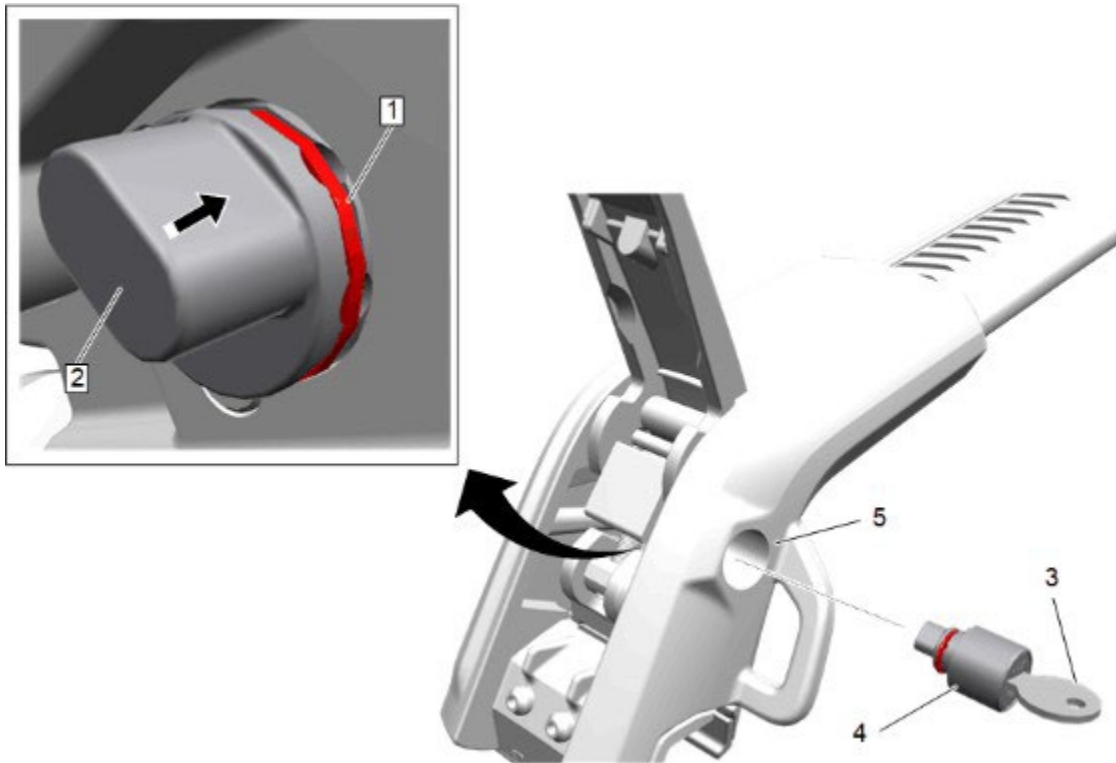
Additional Tools Required

Suitable Flat-Bladed Tool

Remove Defective Lock Cylinder Assembly



1. Insert Key to unlock the lock and open the lever.
2. Remove crossbar from vehicle and place on a workbench before starting the repair.
3. Using a suitable flat-bladed tool, push-down the retainer clip (1) so it is flush with lock cylinder (2).

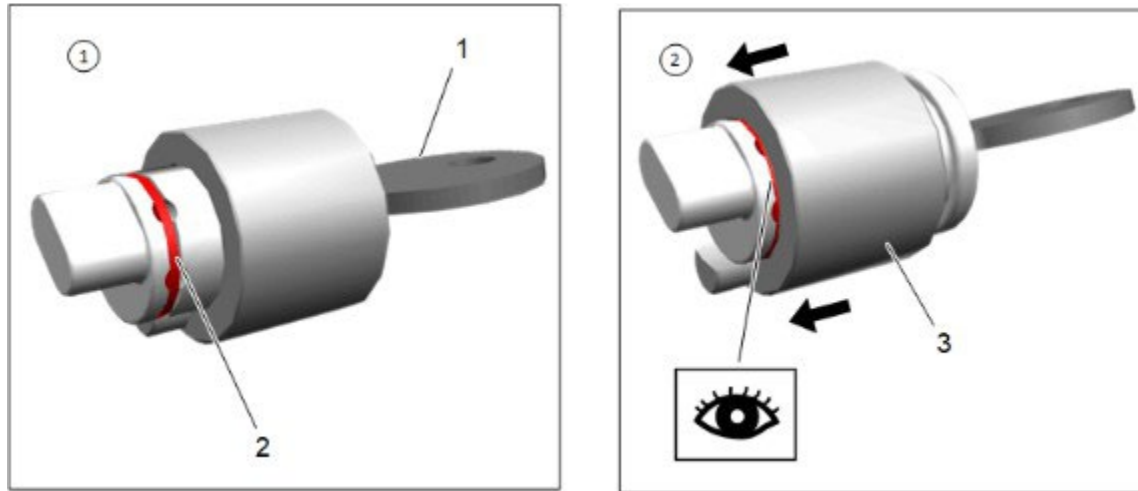


4. With the retainer clip (1) pushed down, pull on the key (3) to remove lock cylinder (4) outward.

Note: If the key is either stuck or broken inside the lock, use another suitable flat-bladed tool to push the lock cylinder (2) outward with the retainer clip pushed down.

5. The entire lock cylinder assembly (4) will pop-out from cross bar hole (5).

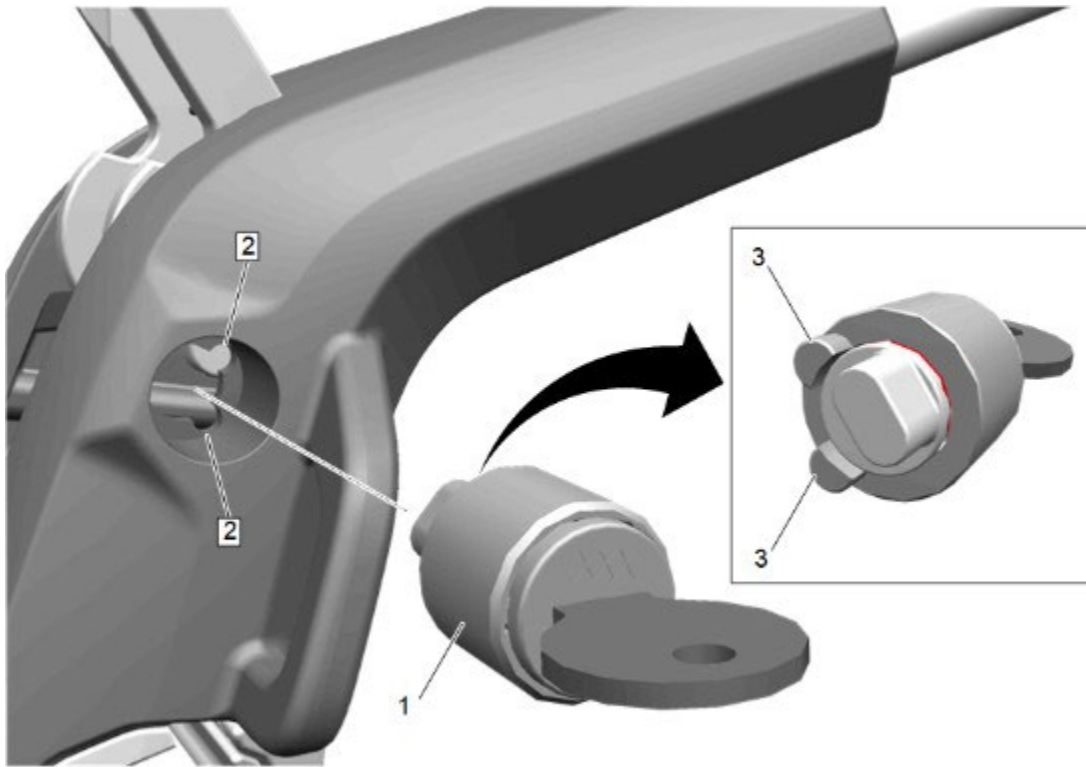
Install New Service Lock Cylinder Assembly



1. Take the new lock cylinder and insert key (1) into it.

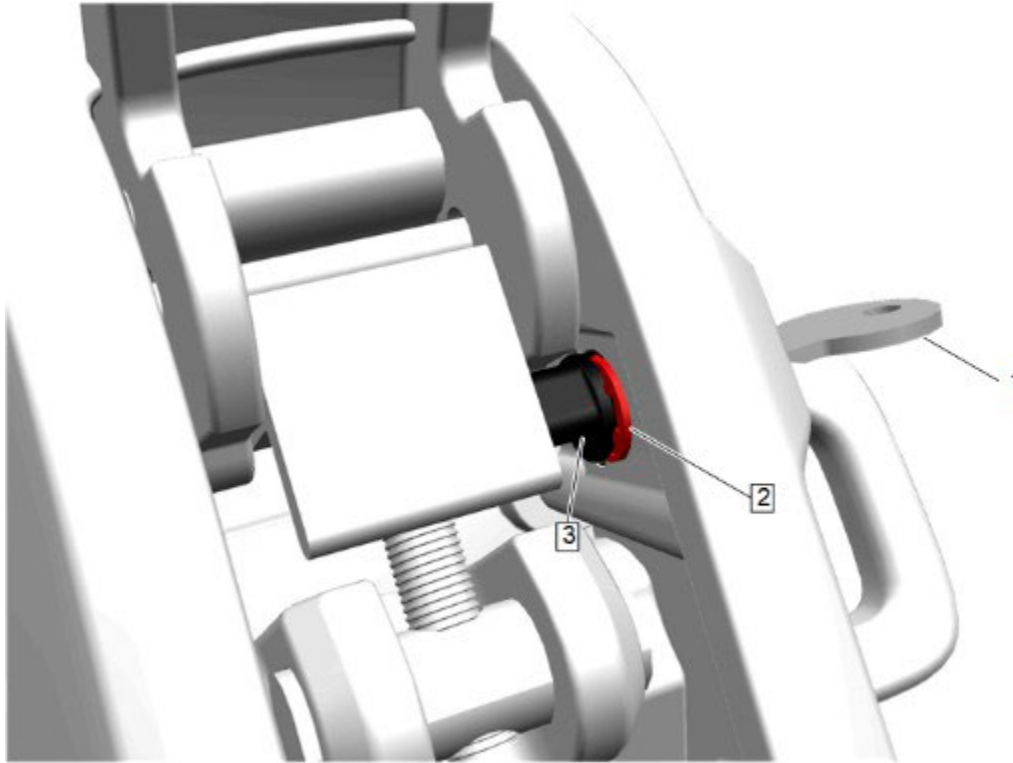
Note: Ensure retainer clip is inside lock housing.

2. Push down on the retainer clip (2) and slide the lock housing (3) to the left so it completely overlaps the retainer clip.



Note: Right hand parts shown. Left hand parts have one alignment knob lock.

3. Insert lock cylinder assembly (1) in support such that alignment knobs (3) line up with its mating features (2) in support.



4. Once lock housing is fully inserted turn the key (1) clockwise, this will push the lock cylinder (3) inside and the retainer clip (2) will pop out. Then turn key counter-clockwise and remove key (1).