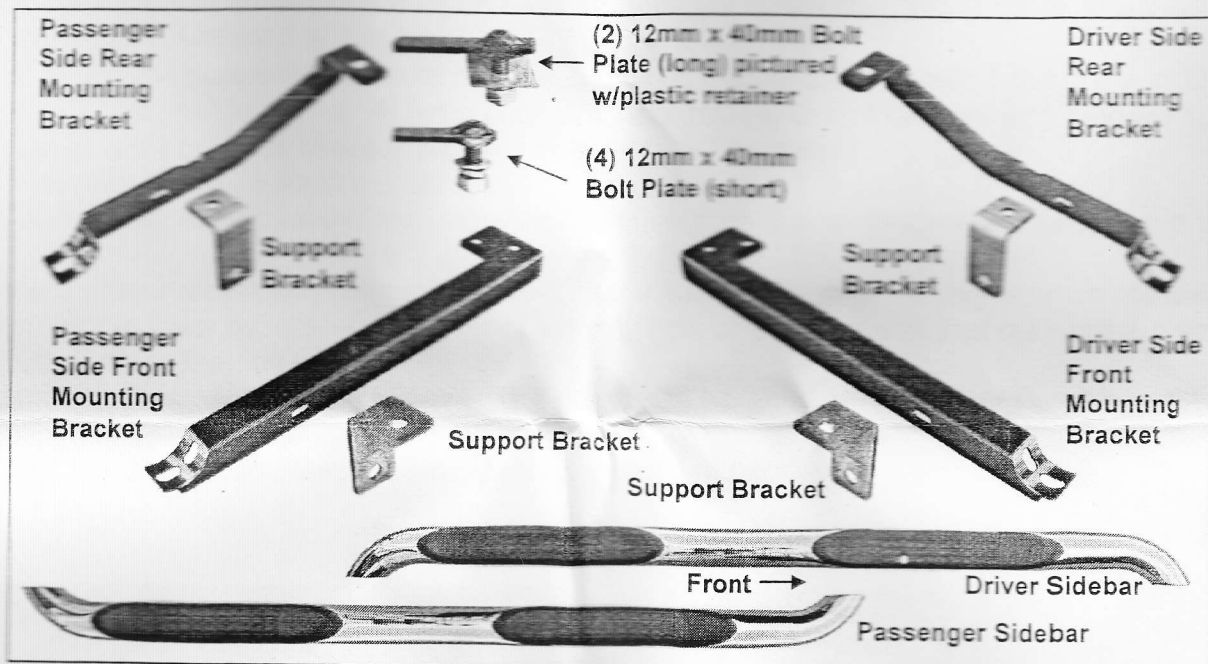


PARTS LIST:

1	Driver Sidebar	6	12mm Lock Washers
1	Passenger Sidebar	6	12mm Hex Nuts
1	Driver/Left Front Mounting Bracket	4	10-1.25mm x 35mm Fine Thread Hex Bolts
1	Passenger/Right Front Mounting Bracket	4	10-1.50mm x 35mm Hex Bolts
1	Driver/Left Rear Mounting Bracket	12	10mm x 27mm x 3mm Flat Washers
1	Passenger/Right Rear Mounting Bracket	8	10mm Lock Washers
4	Support Brackets	4	10-1.50mm Hex Nuts
2	12mm Plastic Retainers	8	8-1.25mm x 25mm Hex Bolts
4	12-1.75mm X 40mm Special Short Bolt Plates	8	8mm x 24mm x 2mm Flat Washers
2	12-1.75mm X 40mm Special Long Bolt Plates	8	8mm Lock Washers
6	12mm x 32mm x 3mm Flat Washers		



PROCEDURE:

1. REMOVE CONTENTS FROM BOX. VERIFY ALL PARTS ARE PRESENT. READ INSTRUCTIONS CAREFULLY BEFORE STARTING INSTALLATION.
2. Starting at the front, passenger side of the vehicle, locate and remove the rubber plug in the body well located next to the outer pinch weld, (Figure 1). Insert (1) 12mm x 40mm Short Bolt Plate into the outer hole in the body and center it in the hole, (Figure 2). Select (1) Support Bracket and hang the Bracket from the Bolt Plate with (1) 12mm Lock Washer, (1) 12mm Flat Washer and (1) 12mm Hex Nut, (Figure 3). Do not tighten hardware at this time.
3. Remove the two 10-1.25mm fine thread factory hex bolts located on the bottom of the frame rail, (Figure 4). Select the passenger side Front Mounting Bracket. Hang the Bracket from the two threaded holes in the inner frame rail using the supplied (2) 10-1.25mm x 35mm **Special Fine Thread Hex Bolts**, (2) 10mm Lock Washers and (2) 10mm Flat Washers, (Figure 5). Line up the outer mounting hole in the Mounting Bracket with the Support Bracket and bolt together with (1) 10-1.5mm x 35mm Coarse Thread Hex Bolt, (2) 10mm Flat Washers, (1) 10mm Lock Washer and (1) 10mm Hex Nut, (Figure 6). Snug but do not tighten hardware at this time.

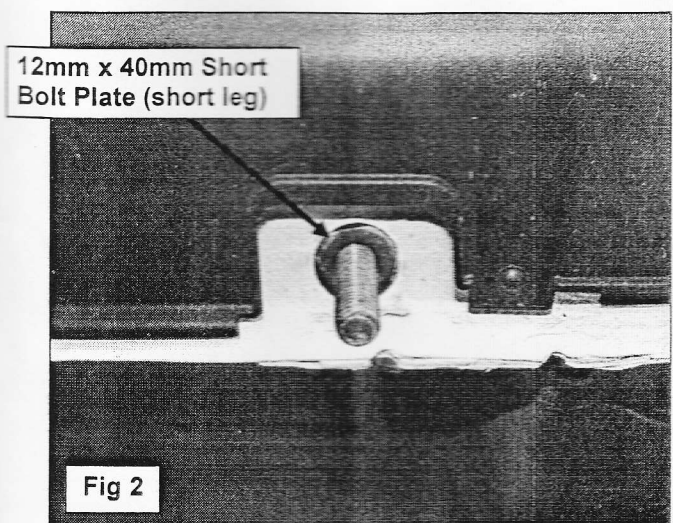
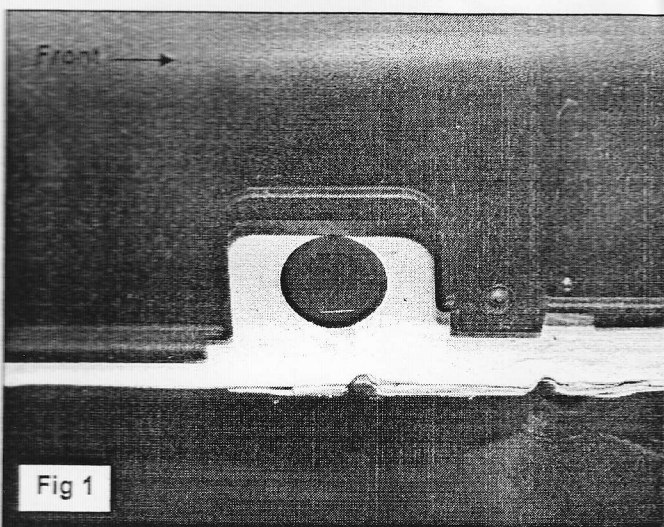
4. Move toward the rear of the vehicle. Remove the round rubber plug on the outer body panel next to the pinch weld and repeat Step 2 for Support Bracket installation, (Figure 7 & 8).
5. Remove the oval rubber plug, (if equipped), located on the bottom of the inner frame rail. Thread (1) 12mm Plastic Retainer partially onto (1) 12mm x 40mm Long Bolt Plate (long leg). Insert the Bolt Plate into the oval hole and center it over the slot, (Figure 9). Thread the Plastic Retainer down until it is tight against the frame rail. **IMPORTANT:** The Plastic Retainer is designed to prevent the Bolt Plate from pushing up into the frame rail and to aid in installing the Bracket.
6. Position the passenger side Rear Frame Bracket up to the vehicle and partially attach the Bracket to the 12mm Bolt Plate inserted into the oval hole in the frame rail, (Figure 10). Secure the Bracket to the Bolt Plate with the included (1) 12mm Lock Washer, (1) 12mm Flat Washer and (1) 12mm Hex Nut. Line up the outer mounting hole in the Mounting Bracket with the Support Bracket and bolt together with (1) 10-1.5mm x 35mm Coarse Thread Hex Bolt, (2) 10mm Flat Washers, (1) 10mm Lock Washer and (1) 10mm Hex Nut, (Figure 11). Snug but do not tighten hardware at this time.
7. Position the passenger Sidebar onto the Mounting Brackets and attach it using the included (4) 8mm x 25mm Hex Bolts, (4) 8mm Lock Washers and (4) 8mm Flat Washers, (Figure 11).
8. Level and adjust the Sidebar properly and tighten all hardware.
9. Repeat steps 2 - 8 for driver Sidebar installation.
10. Do periodic inspections of the installation to make sure that all hardware is secure and tight.

To protect your investment, wax this product after installing. Regular waxing is recommended to add a protective layer over the finish. Do not use any type of polish or wax that may contain abrasives that could damage the finish.

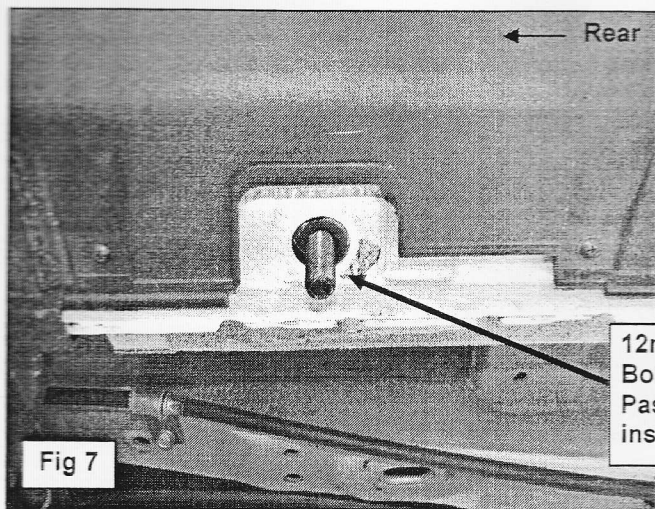
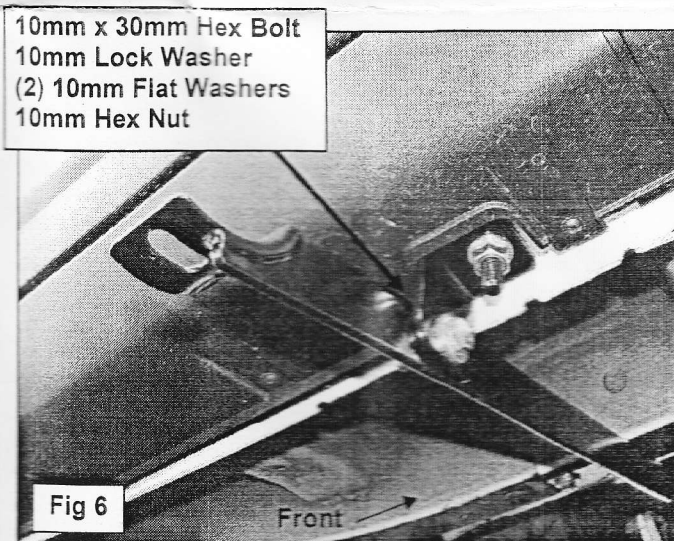
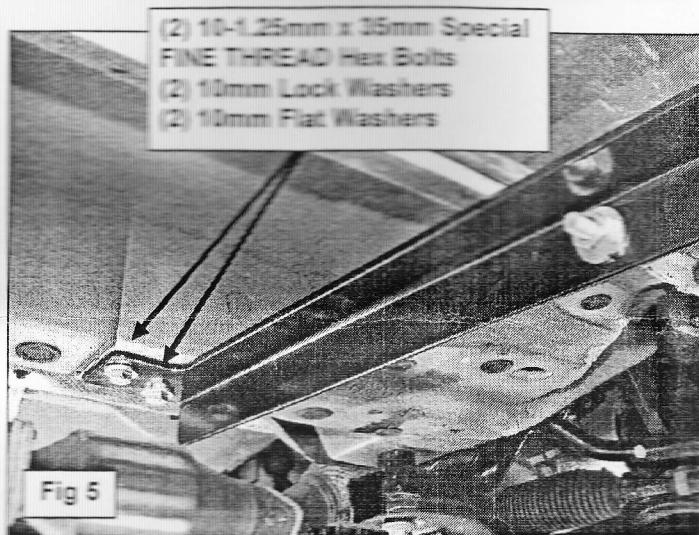
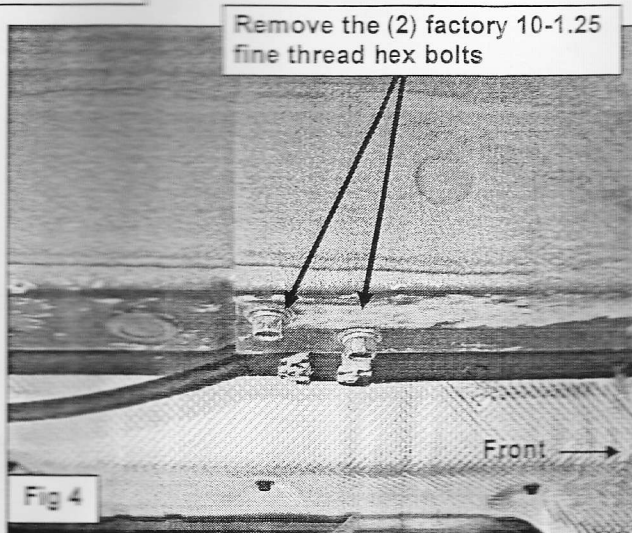
For stainless steel: Aluminum polish may be used to polish small scratches and scuffs on the finish. Mild soap may be used also to clean the Sidebar.

For gloss black finishes: Mild soap may be used to clean the Sidebar.

Passenger Side Installation Pictured



Passenger Side Installation Pictured



Passenger Side Installation Pictured

