



INSTALLATION INSTRUCTIONS

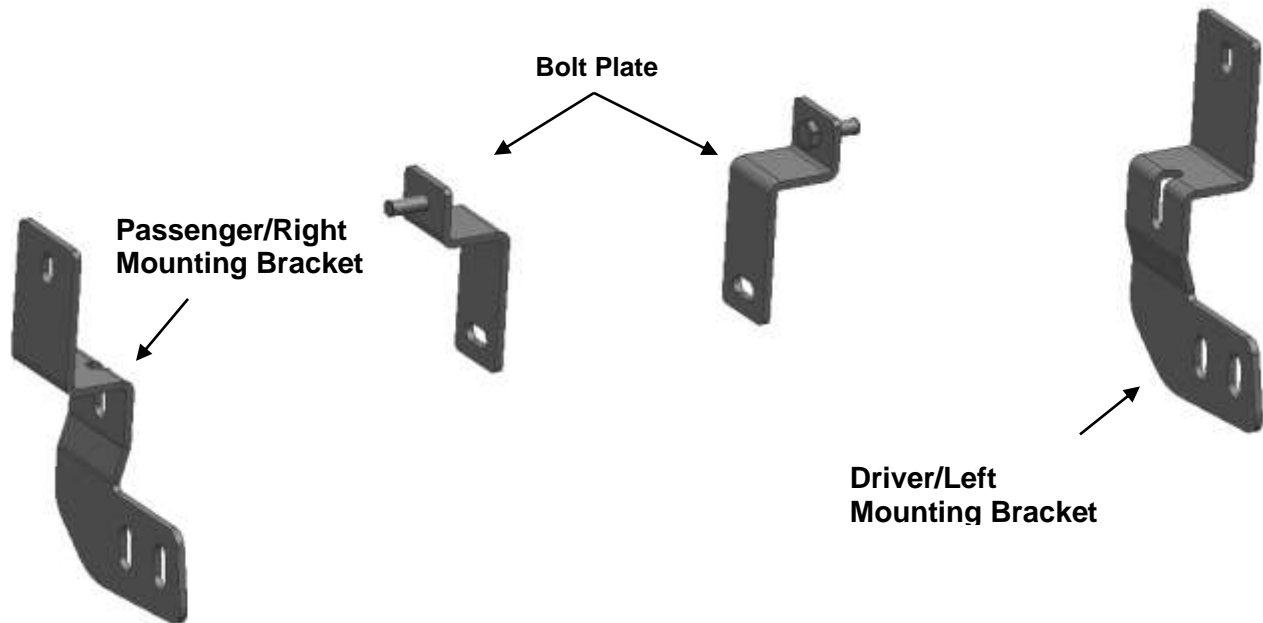
STAINLESS BULL BAR With/ Skid Plate

**FOR
TOYOTA RAV4 2019-2021**

PART # CBS-TOB4802SP

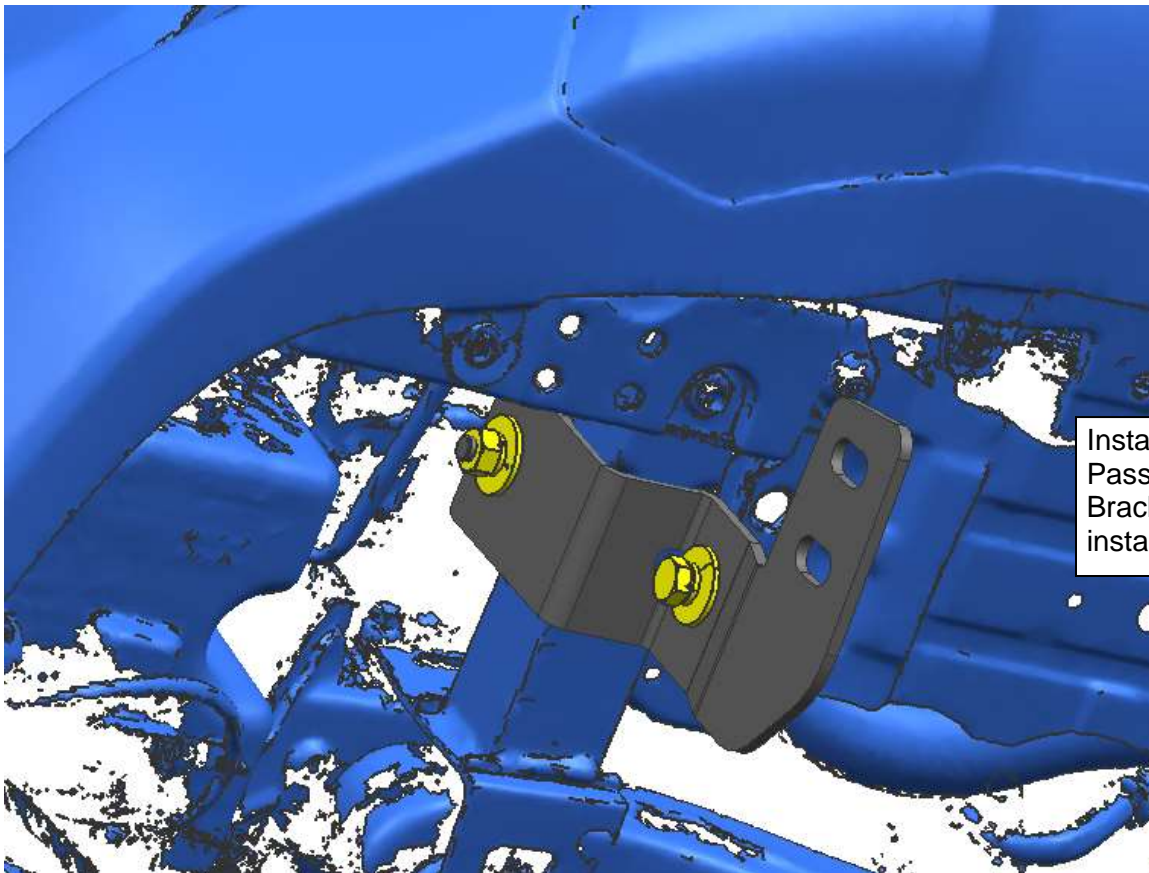
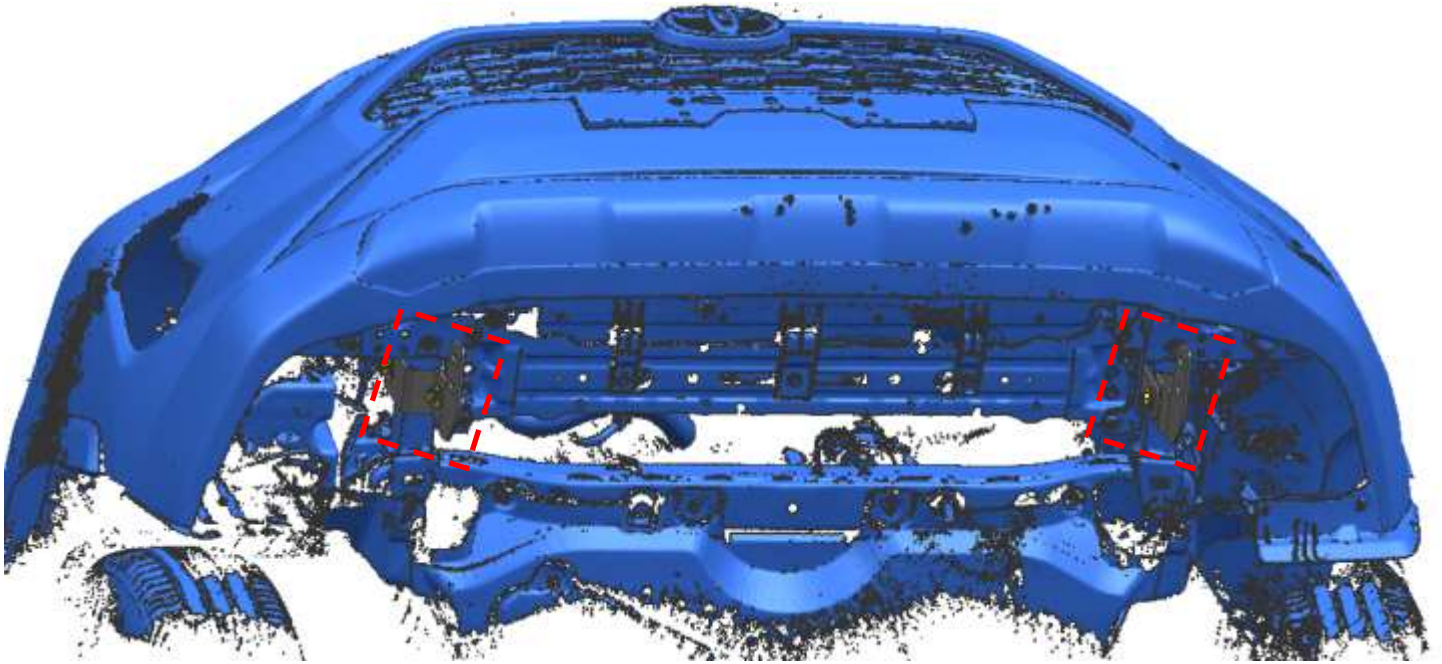
PARTS LIST:

1	Driver/Left Mounting Bracket	8	Flat Washer D12 (12X37X3mm)
1	Passenger/Right Mounting Bracket	4	Hex Nut M10
2	Bolt Plate M10X30	4	Hex Nut M12
4	Lock Washer D10	2	Hex Bolt M10_35
4	Lock Washer D12	4	Hex Bolt M12_40
6	Flat Washer D10 (10×30×2.5mm)		

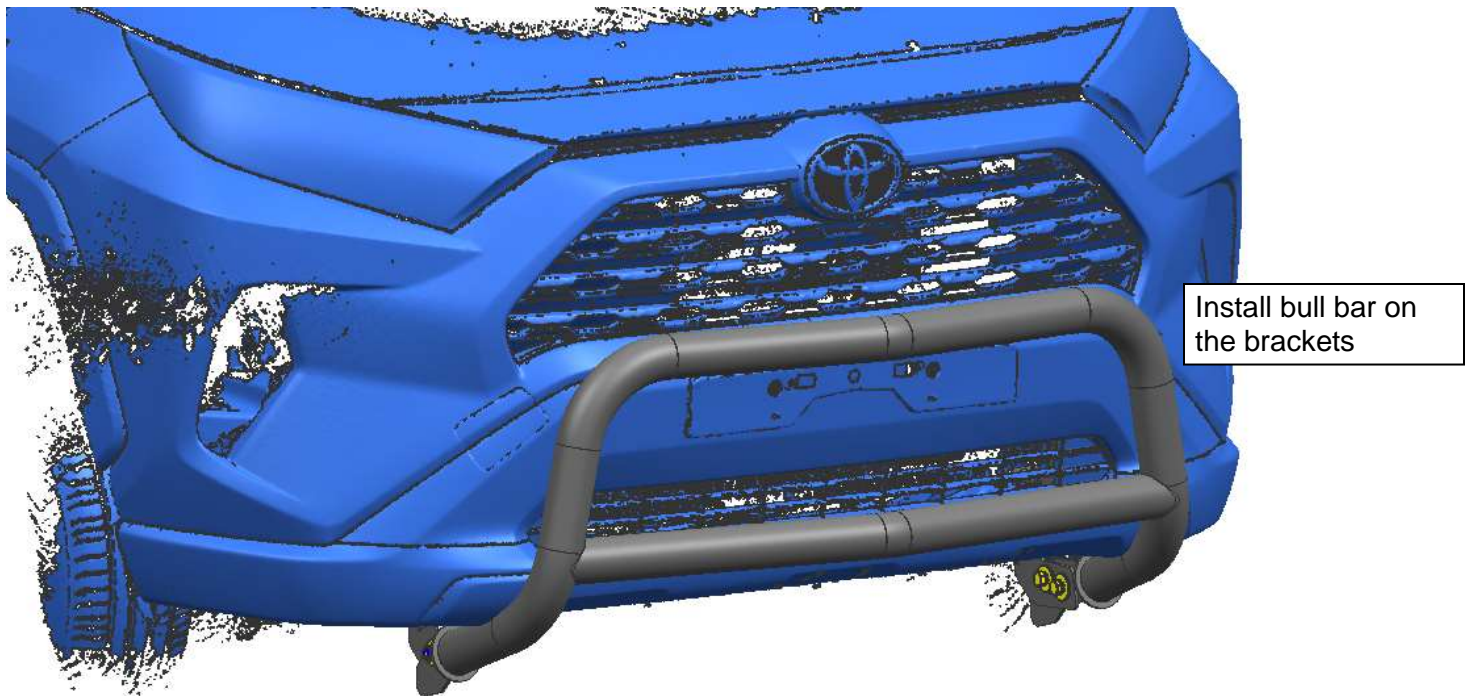
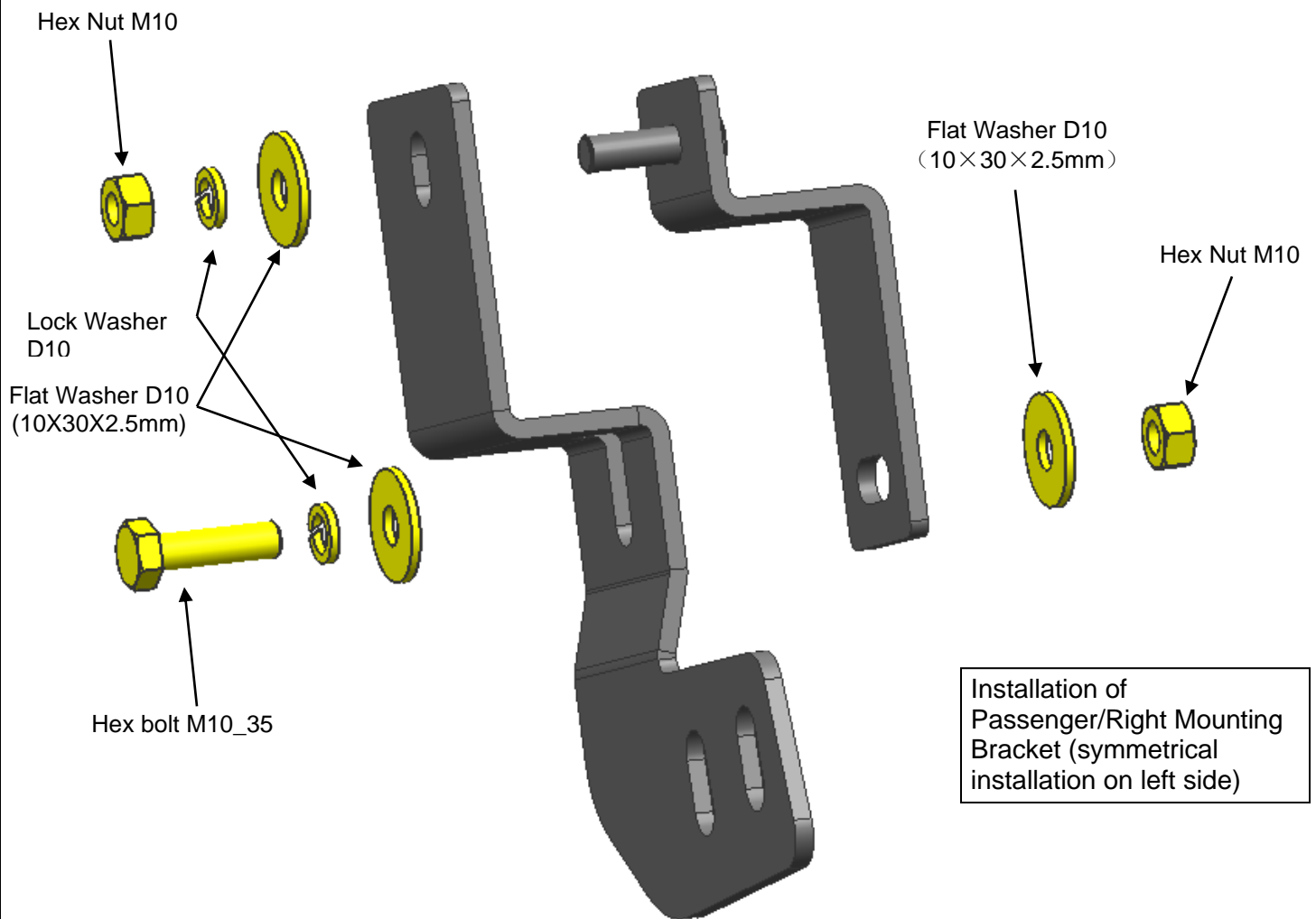


PROCEDURE:

- 1. REMOVE CONTENTS FROM BOX. VERIFY ALL PARTS ARE PRESENT. READ INSTRUCTIONS CAREFULLY BEFORE STARTING INSTALLATION. CUTTING IS REQUIRED. ASSISTANCE IS RECOMMENDED.**
2. Use standard parts Lock Washer D10, Flat Washer D10, Hex Nut M10 and Hex Bolt M10_35 to fix mounting brackets and bolt plates on girder.
3. Use standard parts Lock Washer D12, Flat Washer D12 (12X37X3mm), Hex Nut M12 and Hex Bolt M12_40 to install bull bar on step 2 brackets.

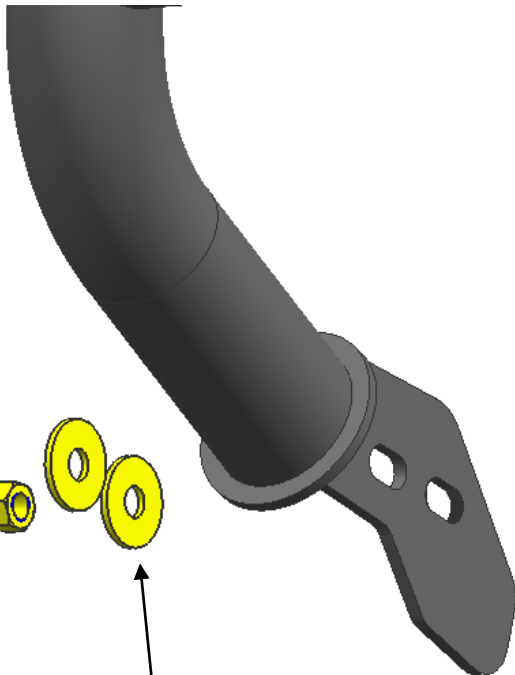


Installation of
Passenger/Right Mounting
Bracket (symmetrical
installation on left side)



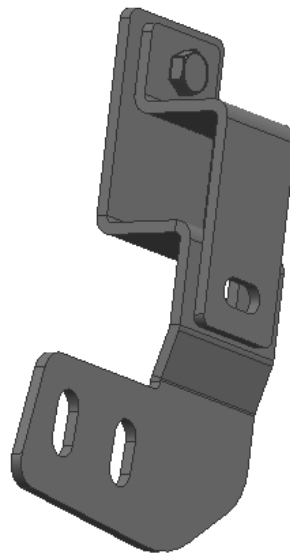


Install on the right side, pay attention to symmetrical installation



Hex Nut M12

Flat Washer D12
(12X37X3mm)



Flat Washer D12
(12X37X3mm)

Hex Bolt M12_40

Lock Washer D12