



# **INSTALLATION INSTRUCTIONS**

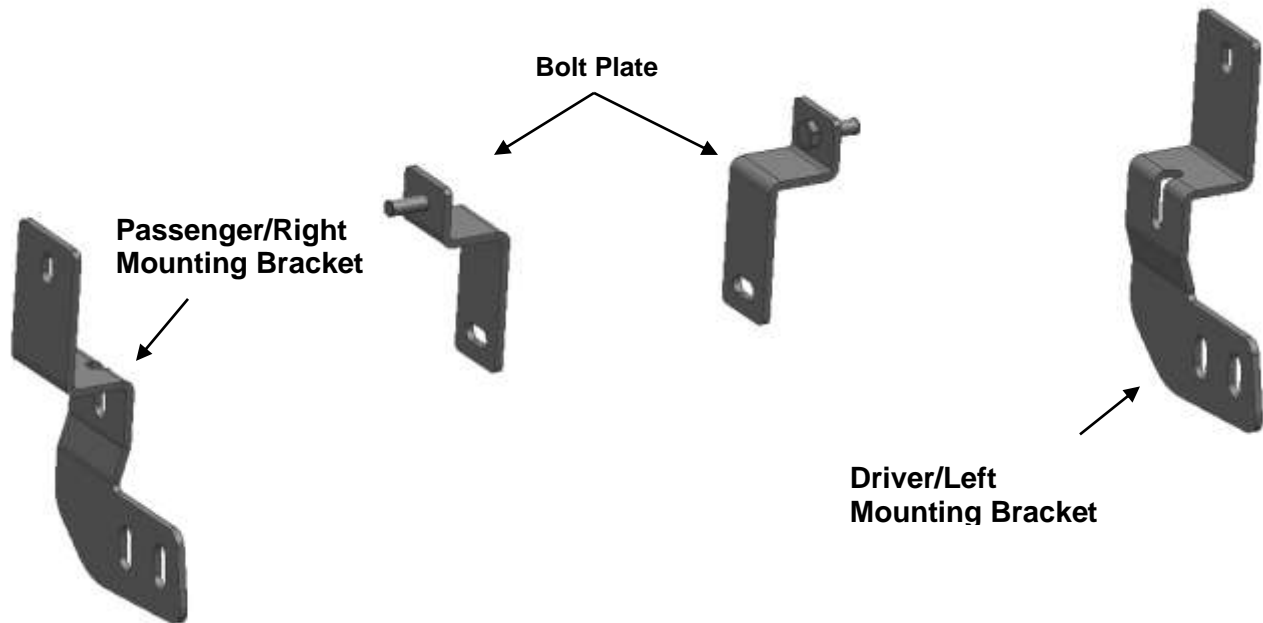
**STAINLESS BULL BAR No/ Skid Plate**

**FOR  
TOYOTA RAV4 2019-2021**

**PART # CBS-TOB4802**

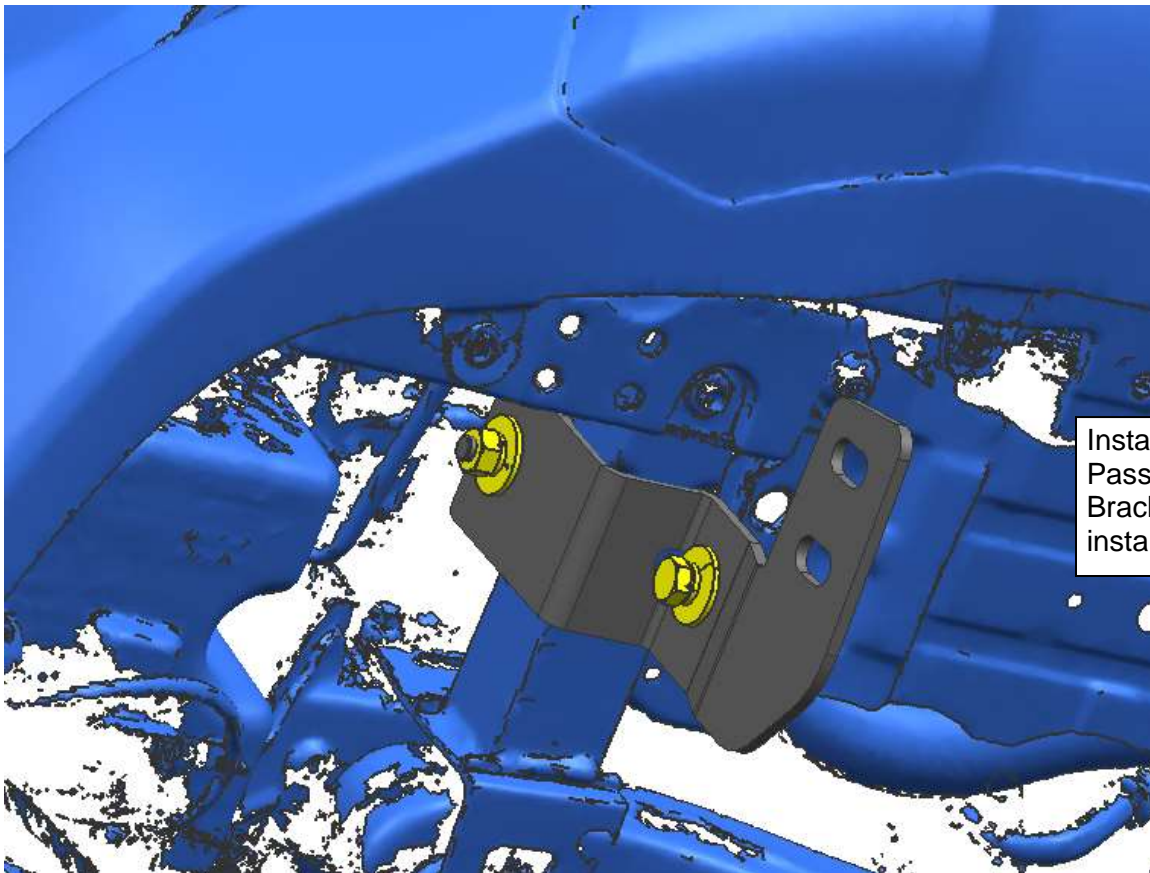
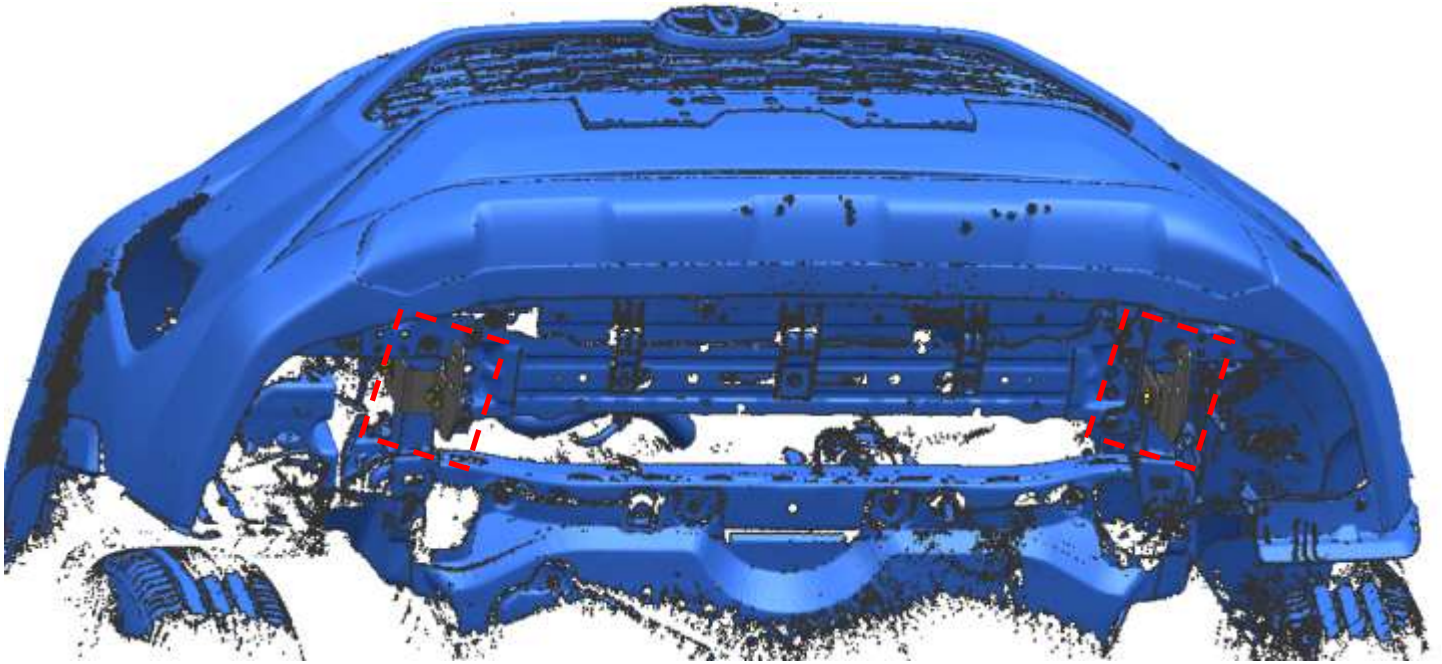
## PARTS LIST:

1	Driver/Left Mounting Bracket	8	Flat Washer D12 (12X37X3mm)
1	Passenger/Right Mounting Bracket	4	Hex Nut M10
2	Bolt Plate M10X30	4	Hex Nut M12
4	Lock Washer D10	2	Hex Bolt M10_35
4	Lock Washer D12	4	Hex Bolt M12_40
6	Flat Washer D10 (10×30×2.5mm)		

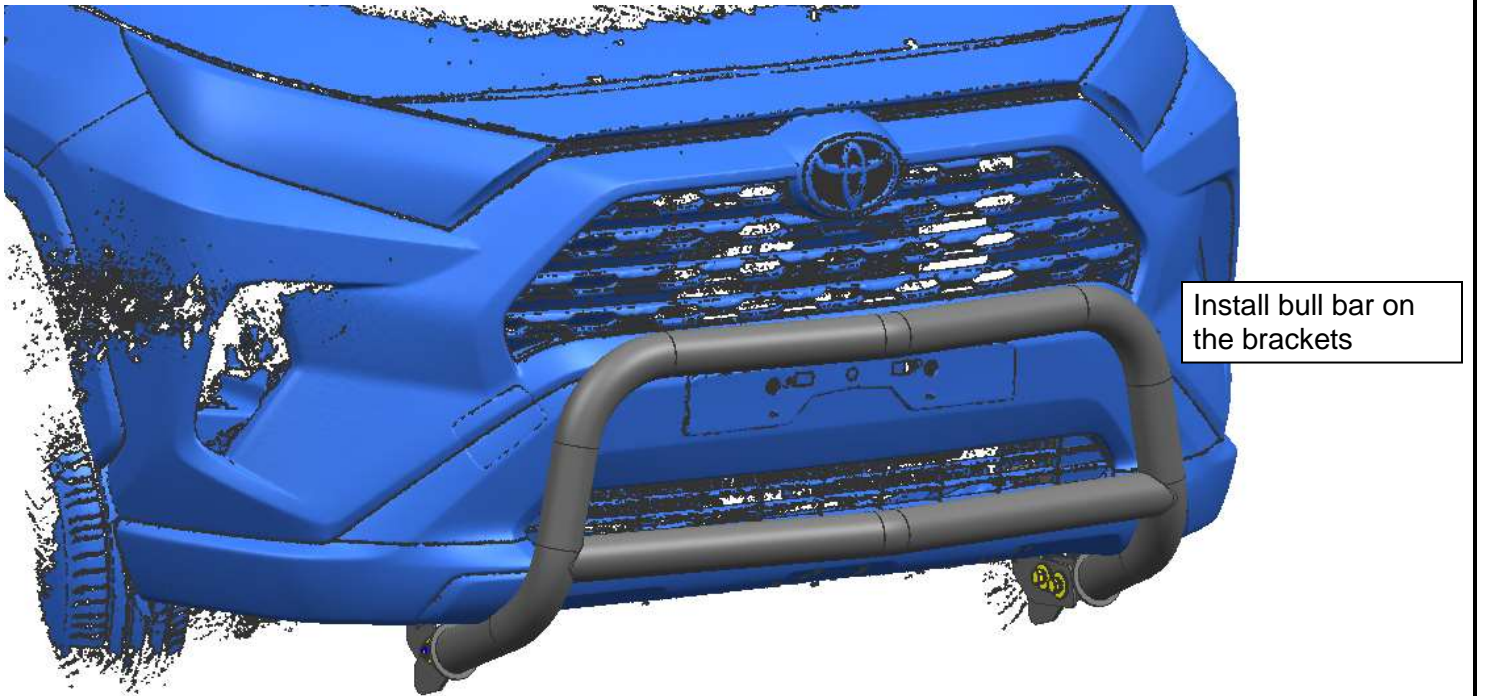
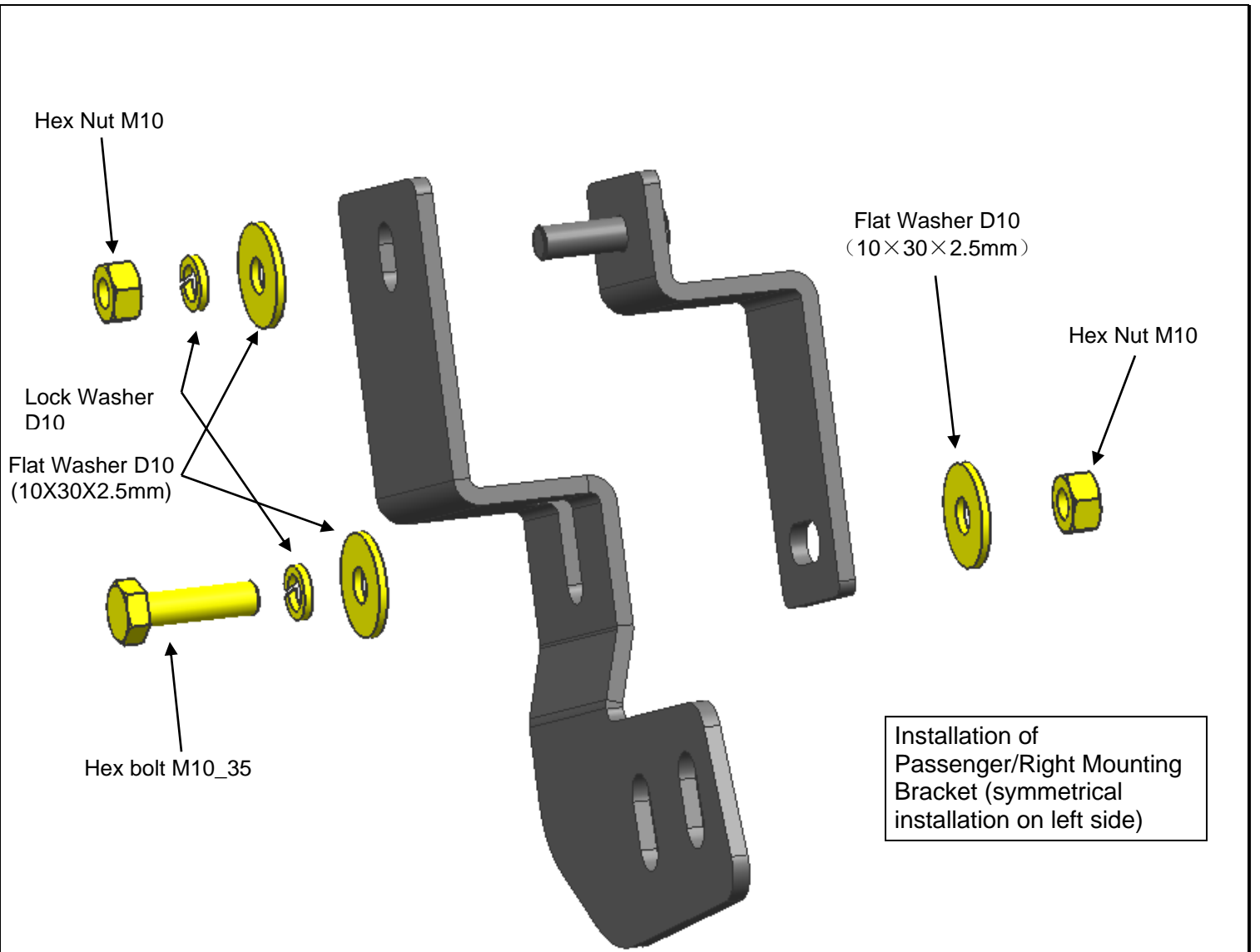


## PROCEDURE:

- 1. REMOVE CONTENTS FROM BOX. VERIFY ALL PARTS ARE PRESENT. READ INSTRUCTIONS CAREFULLY BEFORE STARTING INSTALLATION. CUTTING IS REQUIRED. ASSISTANCE IS RECOMMENDED.**
- Use standard parts Lock Washer D10, Flat Washer D10, Hex Nut M10 and Hex Bolt M10\_35 to fix mounting brackets and bolt plates on girder.
- Use standard parts Lock Washer D12, Flat Washer D12 (12X37X3mm), Hex Nut M12 and Hex Bolt M12\_40 to install bull bar on step 2 brackets.

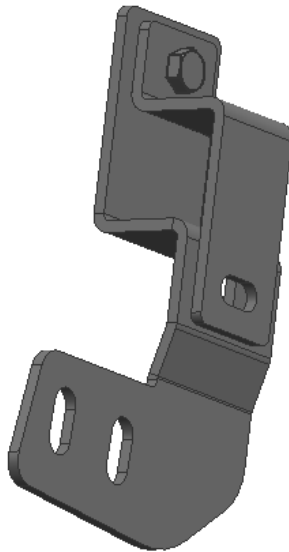
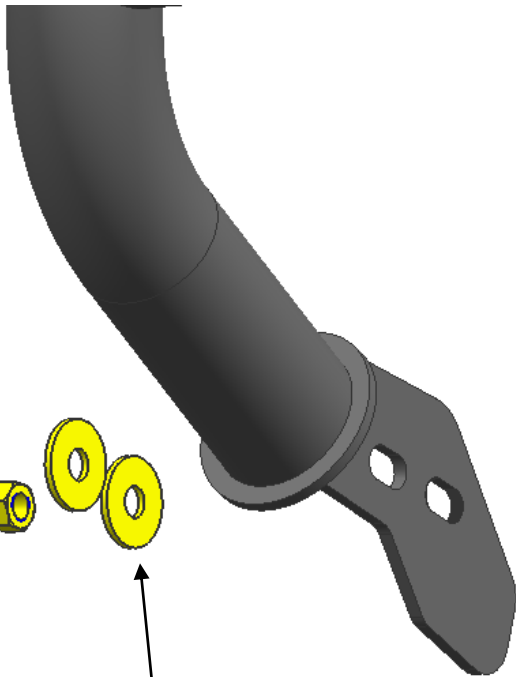


Installation of  
Passenger/Right Mounting  
Bracket (symmetrical  
installation on left side)

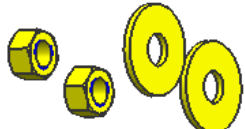




Install on the right side, pay attention to symmetrical installation



Hex Bolt M12\_40

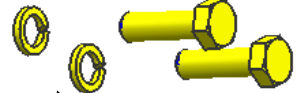


Hex Nut M12

Flat Washer D12  
(12X37X3mm)



Flat Washer D12  
(12X37X3mm)



Lock Washer D12