

# **INSTALLATION INSTRUCTION**

**12-18 MERCEDES GLC DL Front Runner Brackets**  
**PART # BE20**



Attention:

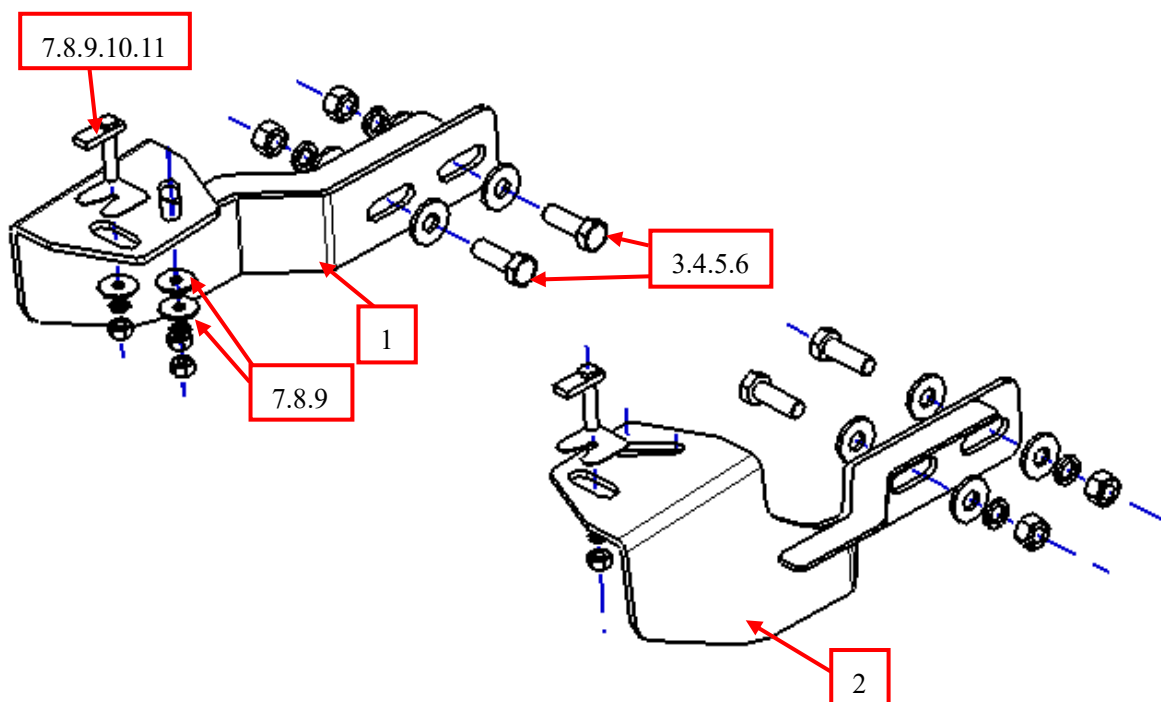
- Please read this installation menu before installing this part. Protect your car properly in case there is any scratch might happen.
- You may need to periodically to re-tighten all hardware for safety use after installation.
- Installation pictures are only for your reference, there might be some differences between pictures and real parts but no affection for your fitting.

Part List

NO.	NAME	QTY	REMARK	NO.	NAME	QTY	REMARK
1	Bracket (left)	1		7	Large Washer	6	$\Phi 8*25*2.0$
2	Bracket (right)	1		8	Spring Washer	6	$\Phi 8$
3	Hex Head Bolts	4	M12*35	9	Hexagon Nut	6	M8
4	Large Washer	8	$\Phi 12*30*3.0$	10	PVC Block	2	$\Phi 8$
5	Spring Washer	4	$\Phi 12$	11	T-bolt	2	M8*40
6	Hexagon Nut	4	M12				

Note: The right and left bracket are installed in the same way.

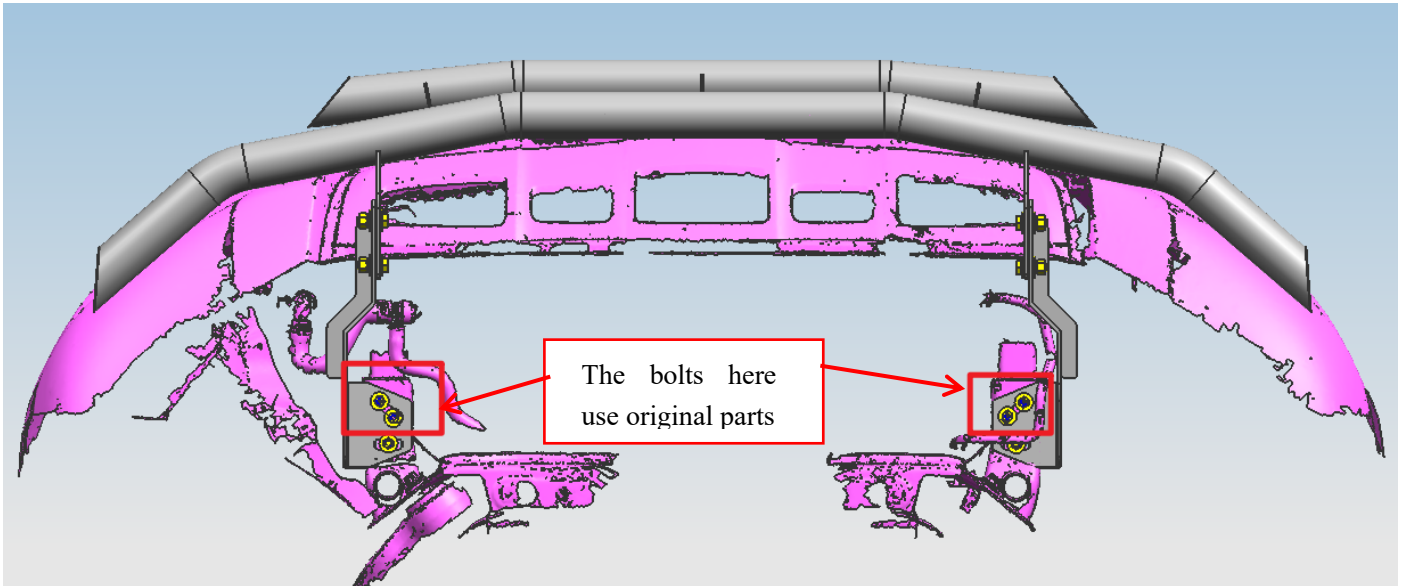
## INSTALLATION PICTURE



## INSTALLATION PROCEDURES

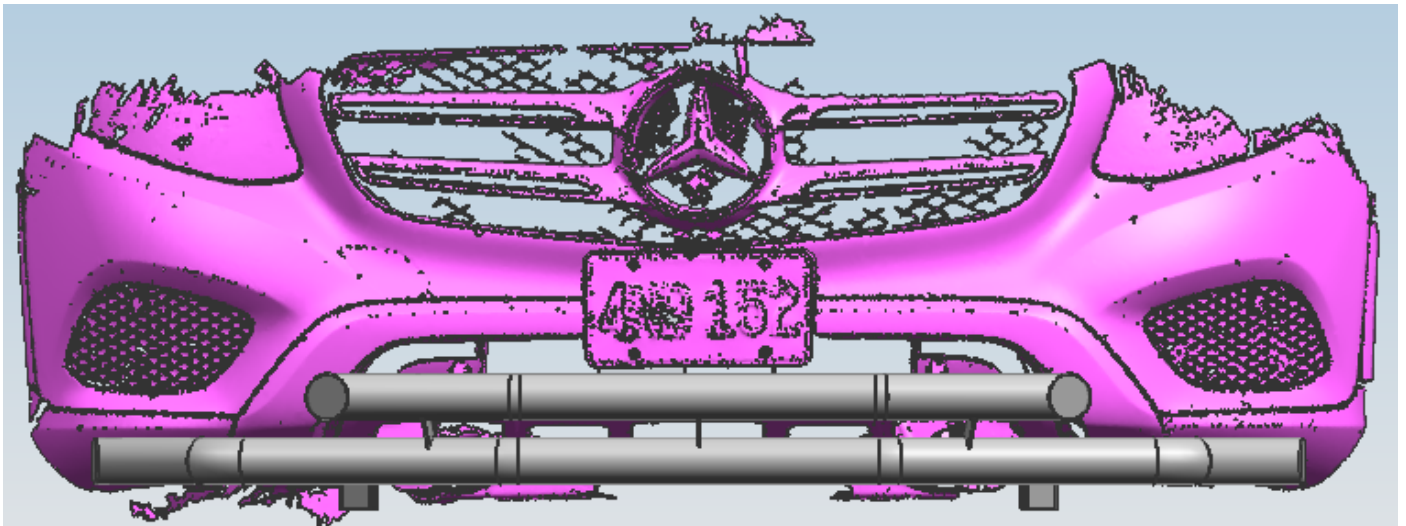
Step 1: Refer to Part List to check if all hard ware are included.

Step 2: Refer to the following picture to install the left and right brackets.



Step 3: Install the bull bar on the brackets and then adjust them to the proper positions.

Step 4: Check if all hard ware are installed and then fasten all to complete the installation.



Disclaimer: Caused due to improper installation and use or the related problems and losses, is beyond our company's quality assurance.