



**BLACK HORSE  
OFF ROAD®**

**TEL : 1-866-XANATOS**

## **INSTALLATION INSTRUCTIONS**

**ARMOUR BULL BAR**

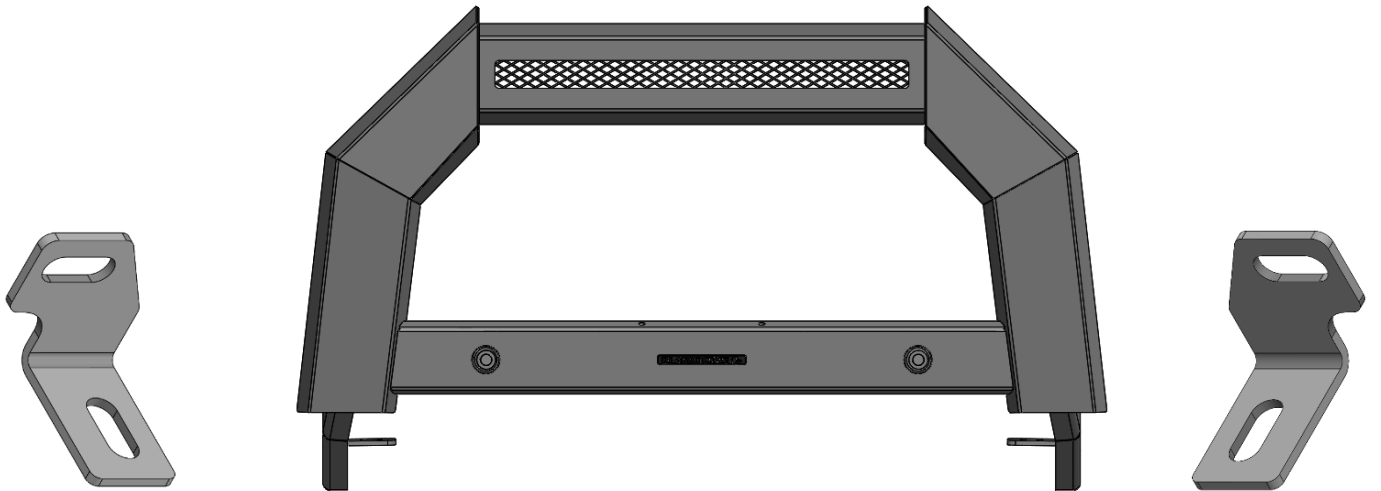
**2024+ TOYOTA LAND CRUISER**

**PART#AB-TO24-NL**

## INSTALLATION INSTRUCTIONS

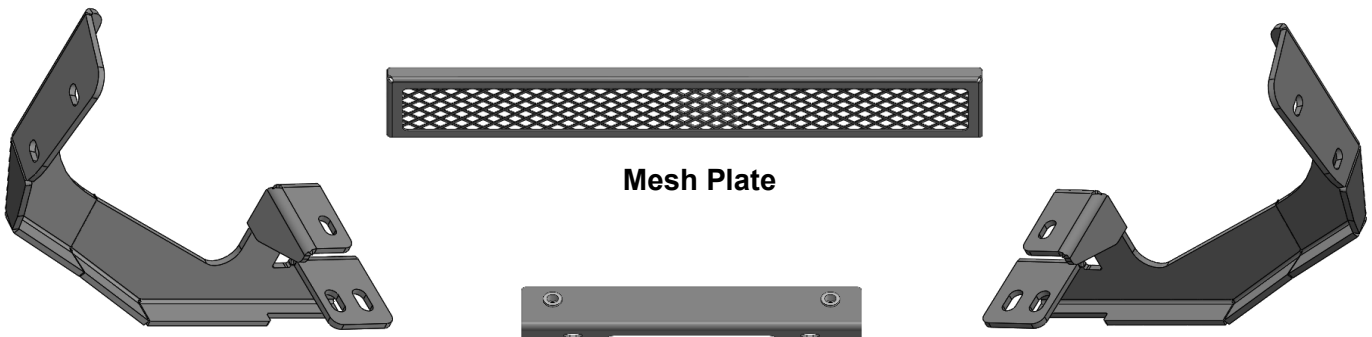
### PARTS LIST:

QTY	Description	QTY	Description
1	Armour Bull Bar	2	10mm Hex Nuts
1	Driver/Left Side Mounting Bracket	2	8-1.25mm x 20mm Hex Bolts
1	Passenger/Right Side Mounting Bracket	2	8-1.25mm x 25mm Hex Bolts
1	Driver/Left Side Light Bar Bracket	8	8mm x 24mm x 2mm Flat Washers
1	Passenger/Right Side Light Bar Bracket	2	8mm Lock Washers
1	Mesh Plate	2	8mm Hex Nuts
1	License Plate Bracket	2	8mm Nylon Lock Nuts
2	Rubber Sensor Plugs	2	6-1.0mm x 20mm Button Head Combo Bolts
2	10-1.5mm x 35mm Bolt Plates	2	6-1.0mm x 20mm Button Head Bolts
2	10mm Fish Wire	4	6mm x 18mm x 1.6mm Flat Washers
2	10mm Plastic Retainers	2	6mm Lock Washers
4	10-1.5mm x 25mm Hex Bolts	2	6mm Hex Nuts
4	10mm x 30mm x 2.5mm Flat Washers	4	4mm x 10mm Button Head Bolts
2	10mm x 27mm x 3mm Flat Washers	1	4mm Allen Wrench
6	10mm Lock Washers	1	2.5mm Allen Wrench



**PS Light Bar Bracket**

**DS Light Bar Bracket**



**PS Mounting Bracket**

**License Plate Bracket**

**DS Mounting Bracket**

## Armour Bull Bar 2024+ Toyota Land Cruiser



Lock Washer



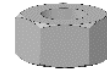
Flat Washer



Hex Bolt



Button  
Head Bolt



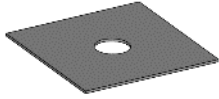
Hex Nut



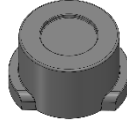
Combo Bolt



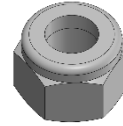
Bolt Plate



Plastic Retainer



Rubber  
Sensor Plug



Nylon  
Lock Nut



Fish Wire

### TOOLS REQUIRED



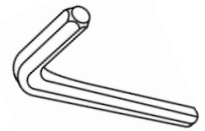
Ratchet



Socket



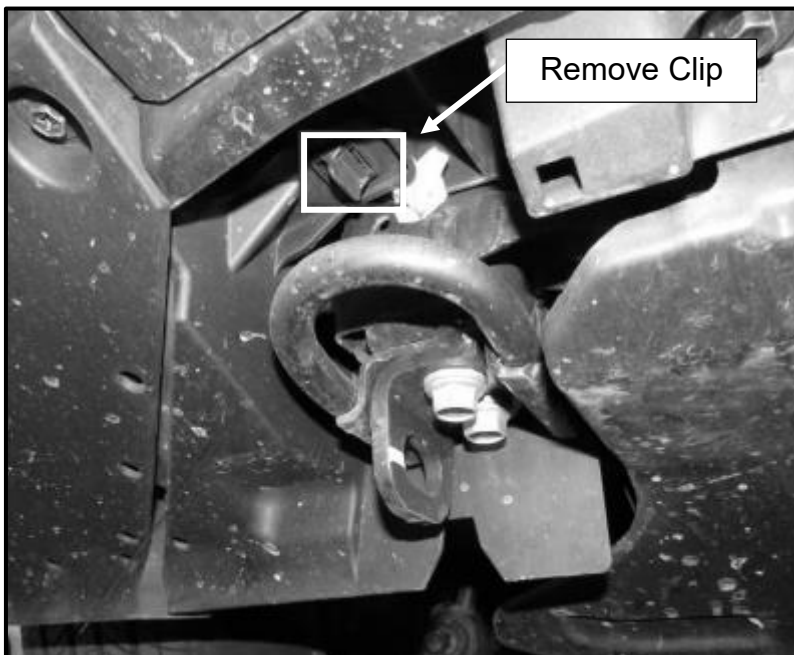
Extensions



Allen Wrench

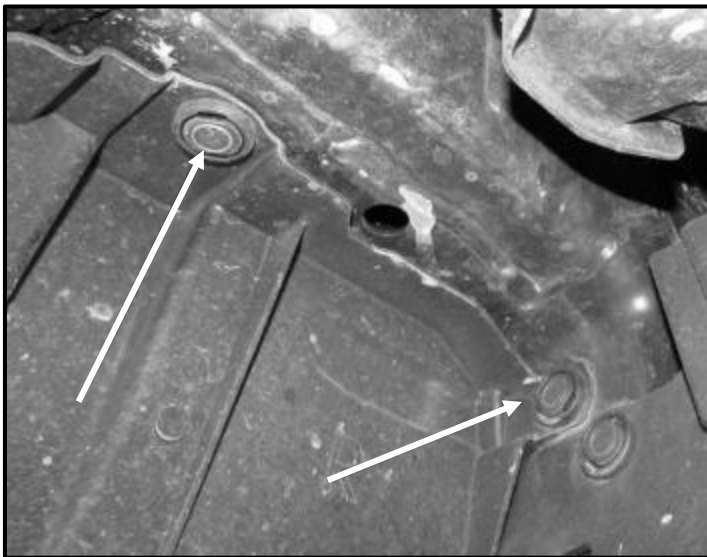
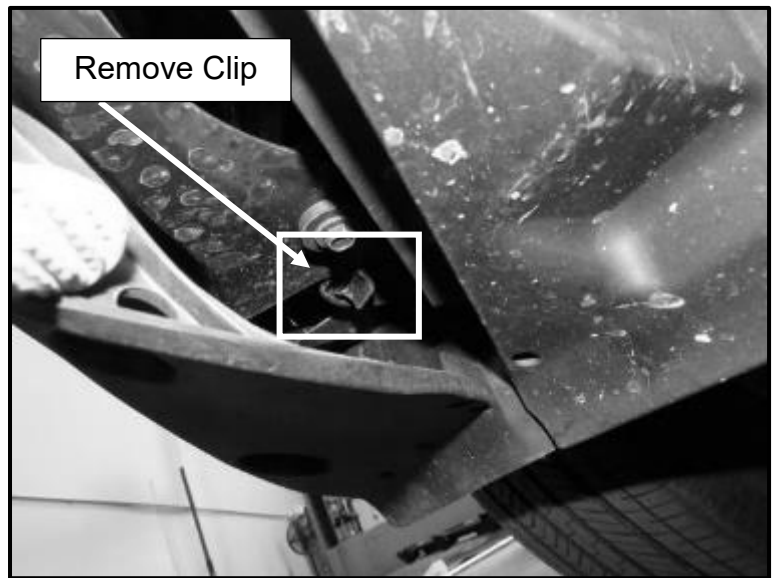
**1**

Follow (Fig 1 – 10) to remove plastic trim and to attach the Mounting Brackets to the vehicle.



(Fig 1) Remove the plastic trim on both DS & PS in order to mount brackets. Begin by removing the clip above the tow hooks.

(Fig 2) Remove a second plastic clip underneath the outer plastic trim.



(Fig 3) Remove the rear plastic clips shown, then remove the plastic trimming.

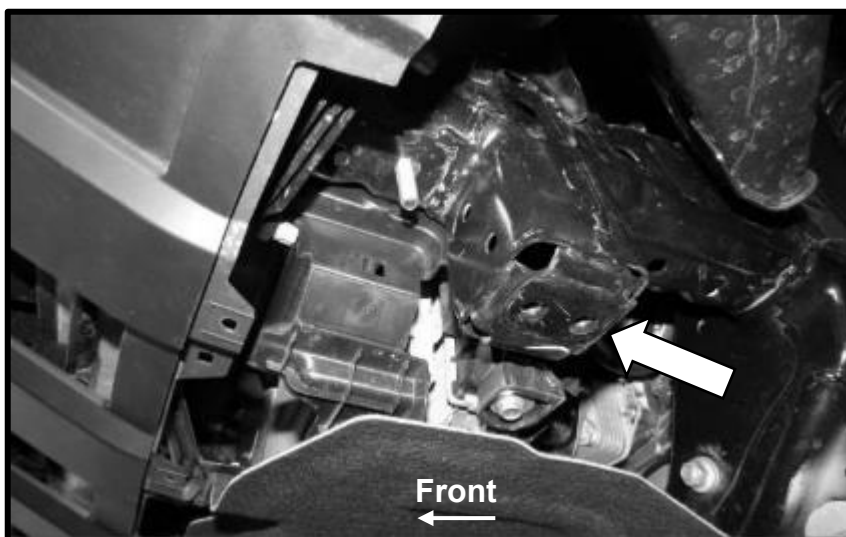
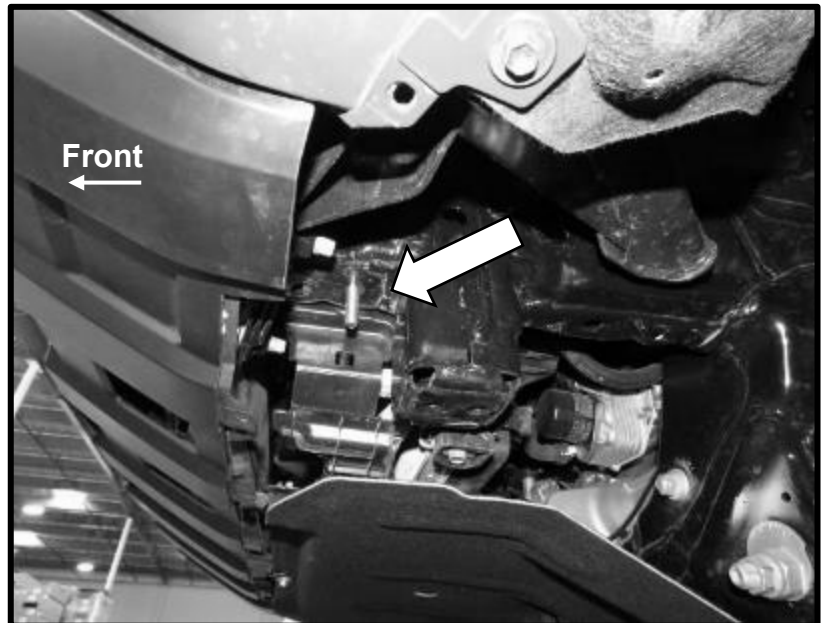
(Fig 4) Now with the plastic trim removed, trim the plastic piece along the dotted line. Once this is done, the mount point will be revealed.





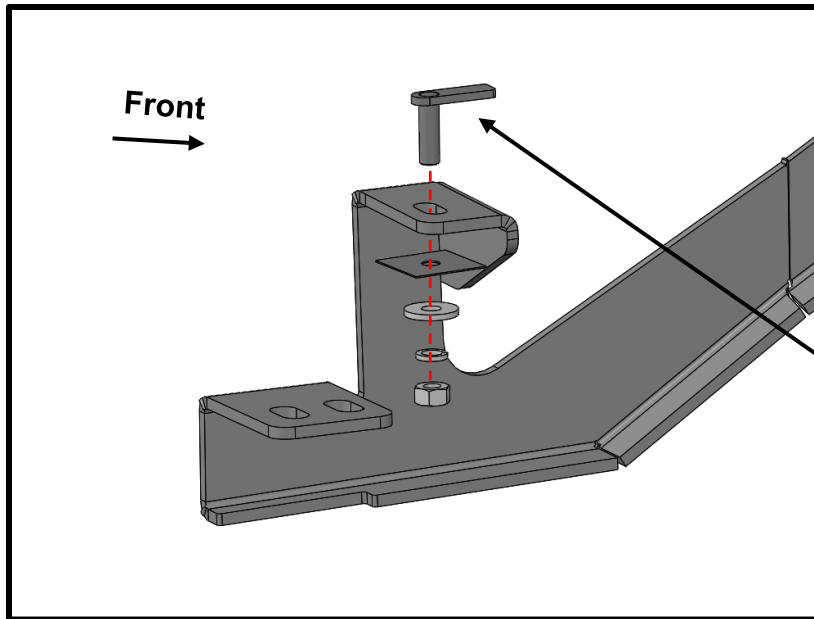
(Fig 5) Use fish wire to guide the bolt plate into its mount hole

(Fig 6) Insert the Bolt Plate to the pictured hole.



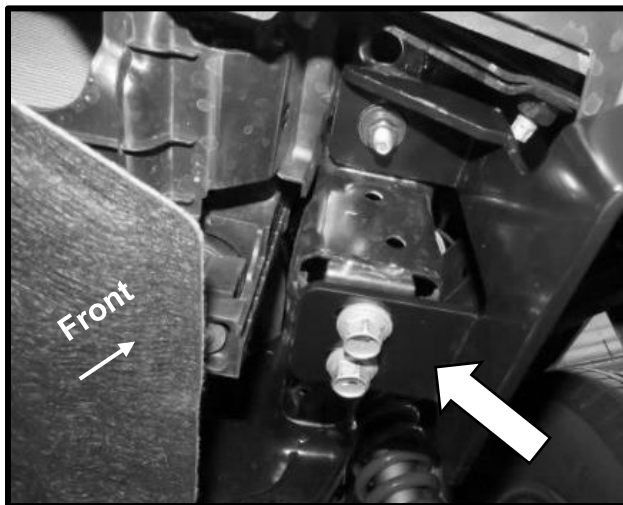
(Fig 7) On both sides, remove the two bolts located the arrow. Set them aside, they will be reused.

Note: If your vehicle has a tow-hook here, remove that as well.



(Fig 8) Install the Mounting Brackets to the Bolt Plate as pictured.

- (1) 10mm Bolt Plate
- (1) 10mm Plastic Retainer
- (1) 10mm Lock Washer
- (1) 10mm x 27mm Flat Washer
- (1) 10mm Hex Nut



(Fig 9) Complete installation of the Mounting Brackets by reusing the OEM hardware as pictured. Repeat for both sides.

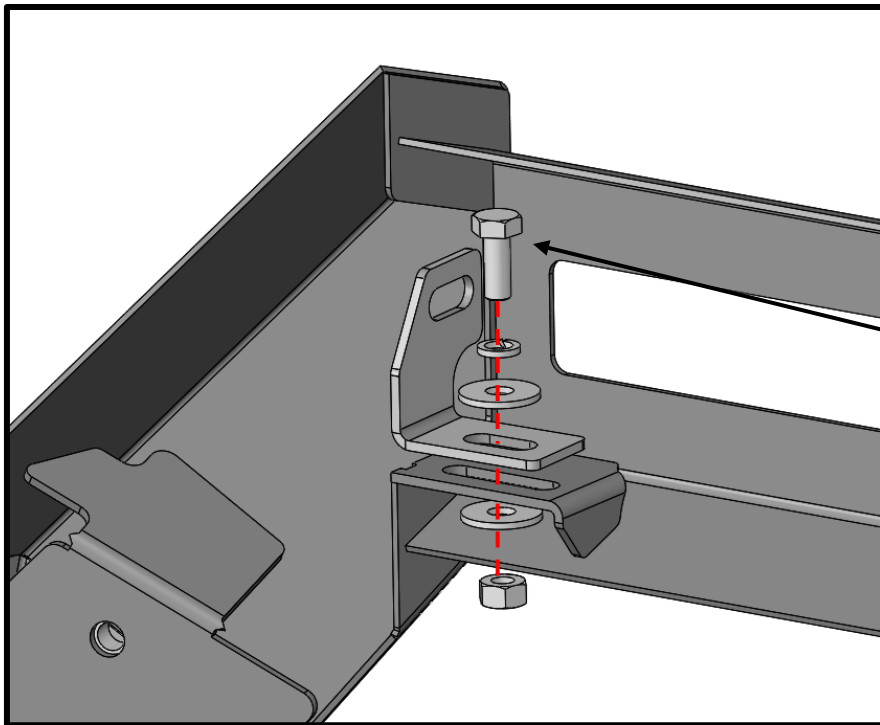
Note: For tow-hook reinstallation, see (Fig 10) before completing this step.

(Fig 10) For optional tow hook reinstallation, stack them underneath the Mounting Brackets as shown. Then re-use the OEM hardware to install both the mounting bracket and the tow hook to the mount point.



2

Follow (Fig 11 - 12) to install the mesh to the Armour Bull Bar.



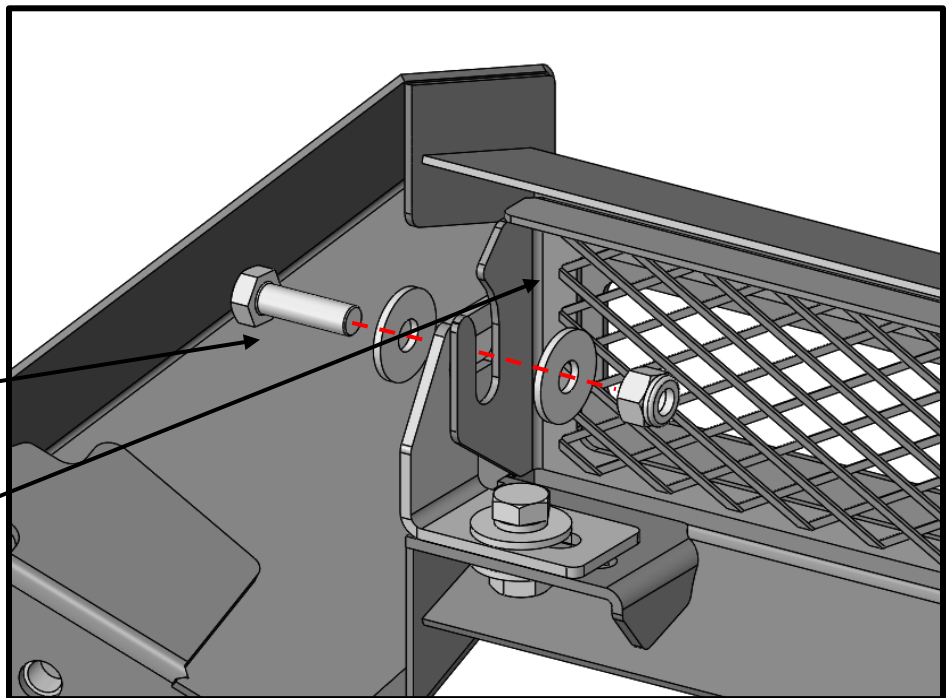
(Fig 11) Install the Light Bar Bracket to the Bull Bar as shown, for both sides.

- (1) 8mm x 20mm Hex Bolt
- (1) 8mm Lock Washer
- (2) 8mm Flat Washer
- (1) 8mm Hex Nut

(Fig 12) Install the Mesh Plate to the Light Bar Bracket as shown.

- (1) 8mm x 25mm Hex Bolt
- (2) 8mm Flat Washer
- (1) 8mm Nylon Lock Nut

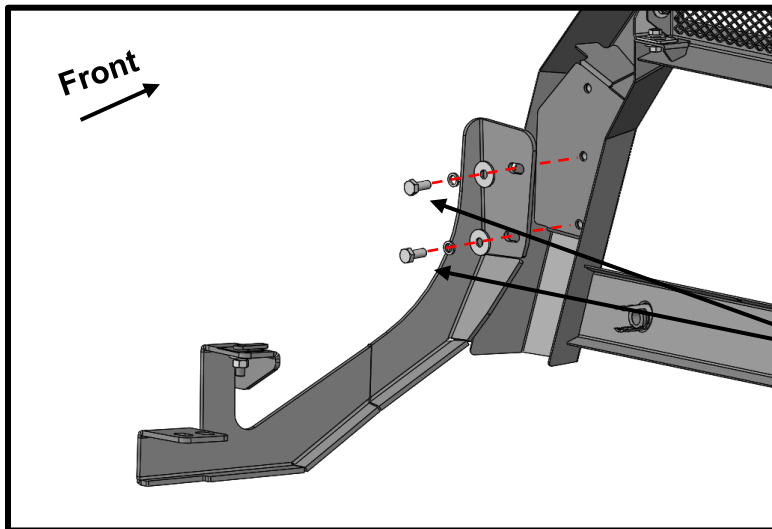
(1) Mesh Plate



Note: If you have a lightbar, install that in place of the Mesh Plate using the provided 8mm hardware.

**3**

Follow (Fig 13) to install the Bull Bar to the Mounting Brackets. Remove front license plate from the vehicle before attaching the Bull Bar to the Mounting Brackets. Set license plate aside for now. Once the Bull Bar is attached to the Mounting Brackets, level and center the Bull Bar, then tighten all hardware.

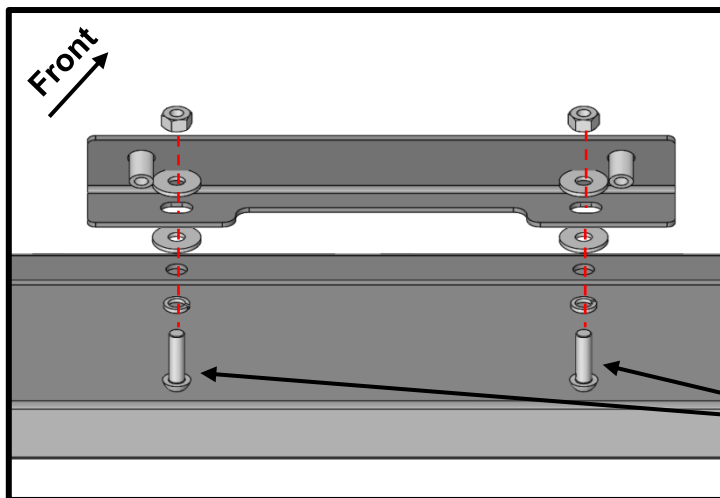


(Fig 13) Align the Bull Bar to the Mounting Brackets and install as pictured.

- (2) 10mm Hex Bolt
- (2) 10mm Lock Washer
- (2) 10mm x 30mm Flat Washer

**4**

Follow (Fig 14 – 15) to relocate the license plate.



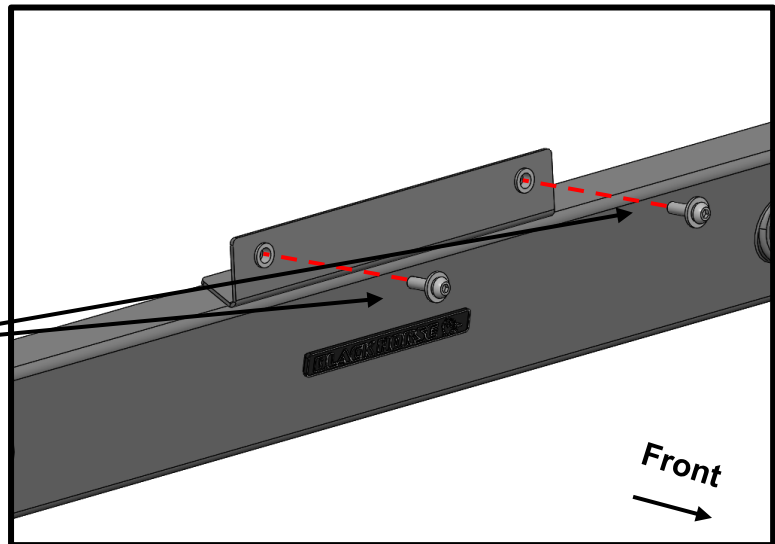
(Fig 14) Install the License Plate Bracket to the center of the Bull Bar as shown.

- (2) 6mm Button Head Bolt
- (2) 6mm Lock Washer
- (4) 6mm Flat Washer
- (2) 6mm Hex Nut



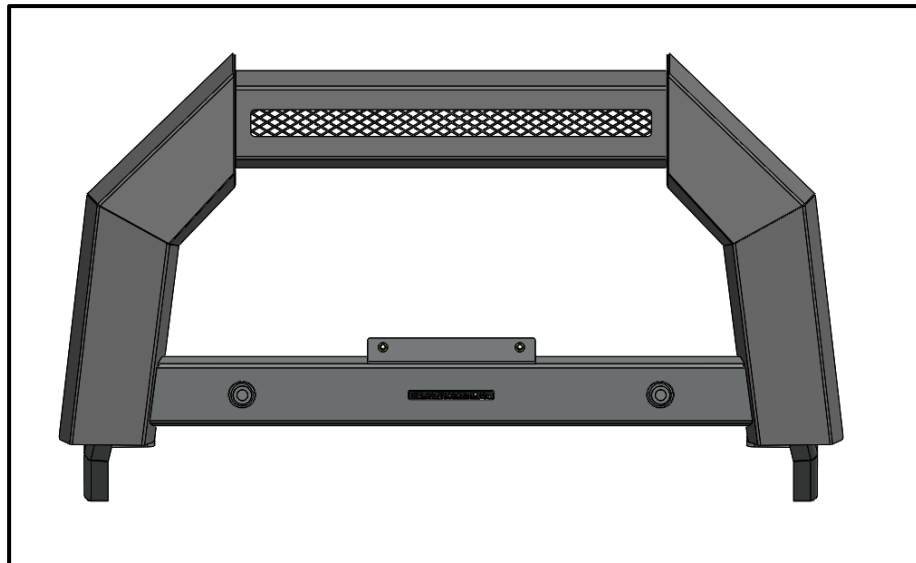
(Fig 15) Once the License Plate Bracket is fully installed, use the 6mm Combo Bolts to install the License Plate.

(2) 6mm Button  
Head Combo Bolt



**5**

Installation is now complete. Be sure to turn off your vehicle's parking sensors and attach the provided Rubber Sensor Plugs to the Bull Bar since the Land Cruiser's rectangular sensors are not compatible with the Armour Bull Bar. Perform periodic inspections to the installation to confirm that all hardware is secured and tightened.



Completed Installation